

This form is not to
be used for reporting
packer leakage tests
in Northwest New Mexico

SOUTHEAST NEW MEXICO PACKER LEAKAGE TEST

Operator Collins & Ware, Inc.		Lease Payday			Well No. 1	
LOCATION OF WELL	Unit L	Sec. 24	Twp. 20 South	Rge. 38 East	County Lea	
	NAME OF RESERVOIR OR POOL		TYPE OF PROD. (Oil or Gas)	METHOD OF PROD. FLOW, ART LIFT	PROD. MEDIUM (Tbg or Csg)	CHOKE SIZE
Upper Compl.	Blinebry Oil & Gas		Oil	Pump	Tbg	Open
Lower Compl.	Warren Tubb, East		Oil	Flow	Tbg.	22/64

FLOW TEST NO. 1

Both zones shut-in at (hour, date): 8:00 AM January 12, 1998

Well opened at (hour, date): 8:00 AM January 13, 1998

Indicate by (X) the zone producing

Pressure at beginning of test

Stabilized? (Yes or No)

Maximum pressure during test

Minimum pressure during test

Pressure at conclusion of test

Pressure change during test (Maximum minus Minimum)

Was pressure change an increase or a decrease?

Well closed at (hour, date): 8:00 AM January 14, 1998

Oil Production

During Test: 101 bbls; Grav. 36.8

Total Time On
Production

24 Hours

Gas Production

During Test 539 MCF; GOR 5337

Remarks:

(Continue on reverse side)

FLOW TEST NO. 2

Well opened at (hour, date):	8:00 AM January 15, 1998	Upper Completion	Lower Completion
Indicate by (X) the zone producing		X	
Pressure at beginning of test		150	970
Stabilized? (Yes or No)		Yes	Yes
Maximum pressure during test		150	1000
Minimum pressure during test		50	970
Pressure at conclusion of test		60	1000
Pressure change during test (Maximum minus Minimum)		100	30
Was pressure change an increase or a decrease?		Decrease	Increase
Well closed at (hour, date):	8:00 AM January 16, 1998	Total Time On Production	24 Hours
Oil Production During Test:	115 bbls; Grav. 37.5	Gas Production During Test	125 MCF; GOR 1087
Remarks:			

I hereby certify that the information herein contained is true and complete to the best of my knowledge.

Approved _____ 19 _____ Operator Collins & Ware, Inc.
 New Mexico Oil Conservation Division
 ORIGINAL SIGNED BY CHRIS WILLIAMS
 DISTRICT 1 SUPERVISOR
 By _____ Title Engineer
 Date January 19, 1998

SOUTHEAST NEW MEXICO PACKER LEAKAGE TEST INSTRUCTIONS

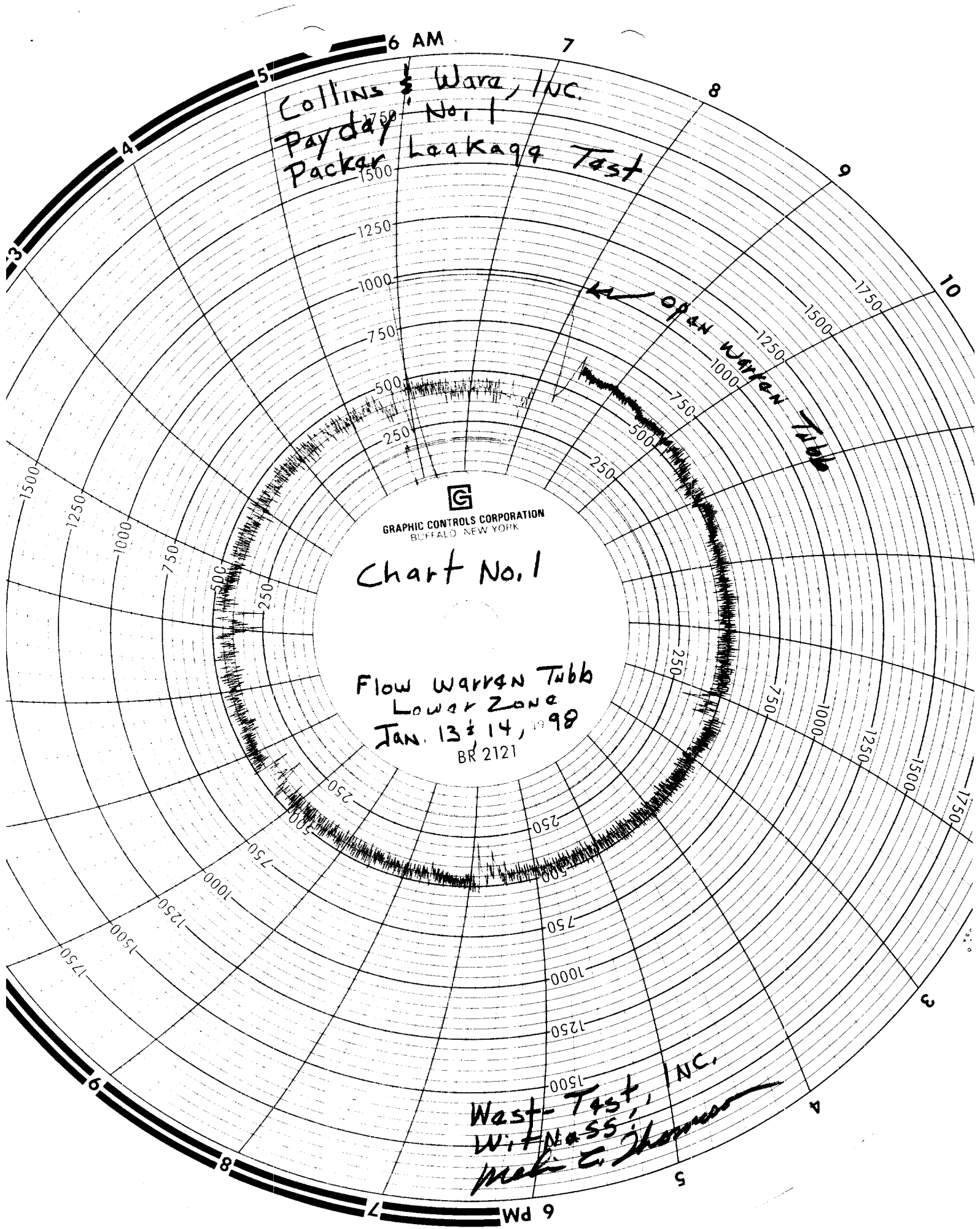
1. A packer leakage test shall be commenced on each multiply completed well within seven days after actual completion of the well, and annually thereafter as prescribed by the order authorizing the multiple completion. Such tests shall also be commenced on all multiple completions within seven days following recompletion and/or chemical or fracture treatment, and whenever remedial work has been done on a well during which the packer or the tubing have been disturbed. Tests shall also be taken at any time that communication is suspected or when requested by the Division.
2. At least 72 hours prior to the commencement of any packer leakage test, the operator shall notify the Division in writing of the exact time the test is to be commenced. Offset operators shall also be so notified.
3. The packer leakage test shall commence when both zones of the dual completion are shut-in for pressure stabilization. Both zones shall remain shut-in until the well-head pressure in each has stabilized and for a minimum of two hours thereafter, provided however, that they need not remain shut-in more than 24 hours.
4. For Flow Test No. 1, one zone of the dual completion shall be produced at the normal rate of production while the other zone remains shut-in. Such test shall be continued until the flowing wellhead pressure has become stabilized and for a minimum of two hours thereafter, provided however, that the flow test need not continue for more than 24 hours.

5. Following completion of Flow Test No. 1, the well shall again be shut-in, in accordance with Paragraph 3 above.

6. Flow Test No. 2 shall be conducted even though no leak was indicated during Flow Test No. 1. Procedure for Flow Test No. 2 is to be the same as for Flow Test No. 1 except that the previously produced zone shall remain shut-in while the previously shut-in zone is produced.

7. All pressures, throughout the entire test, shall be continuously measured and recorded with recording pressure gauges, the accuracy of which must be checked with deadweight tester at least twice, once at the beginning and once at the end, of each flow test.

8. The results of the above-described tests shall be filed in triplicate within 15 days after completion of the test. Tests shall be filed with the appropriate District Office of the New Mexico Oil Conservation Division on Southeast New Mexico Packer Leakage Test Form Revised 11-01-58, together with the original pressure recording gauge charts with all the deadweight pressures which were taken indicated thereon. In lieu of filing the aforesaid charts, the operator may construct a pressure versus time curve for each zone of each test, indicating thereon all pressure changes which may be reflected by the gauge charts as well as all deadweight pressure readings which were taken. If the pressure curve is submitted, the original chart must be permanently filed in the operator's office. Form C-116 shall also accompany the Packer Leakage Test Form when the test period coincides with a gas-oil ratio test period.



6 AM
Collins & Ware, Inc.
Payday No. 1
Packer Leakage Test

open Warren Tubb

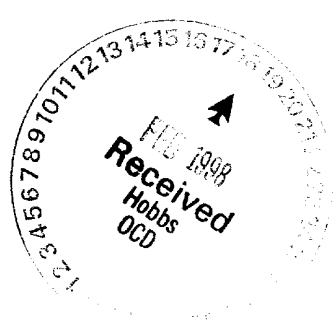
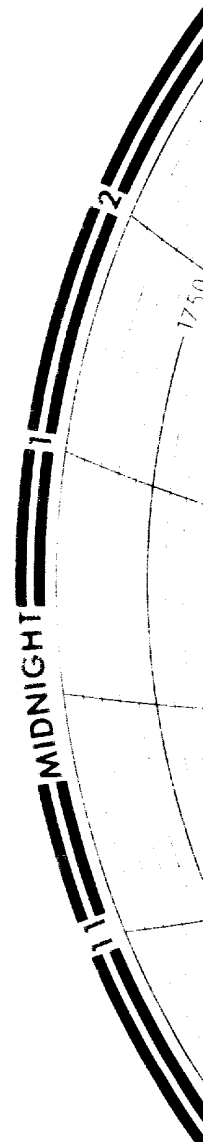
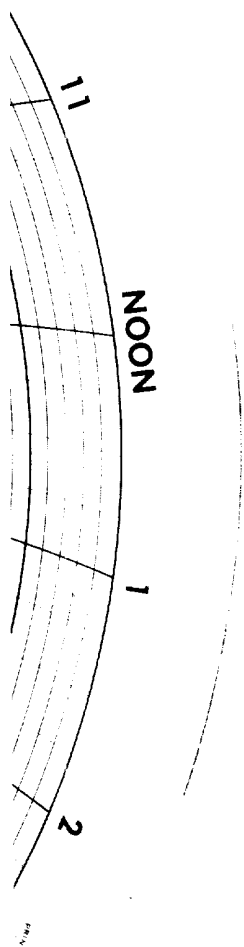
GRAPHIC CONTROLS CORPORATION
BUFFALO, NEW YORK

Chart No. 1

Flow Warren Tubb
Lower Zone
Jan. 13 & 14, 1998
BR 2121

West-Test, Inc.
WITNESS
Mark E. Johnson

6 PM



Collins & Ward, Inc.
Payday No. 1
Packer Leakage Test



GRAPHIC CONTROLS CORPORATION
BUFFALO, NEW YORK

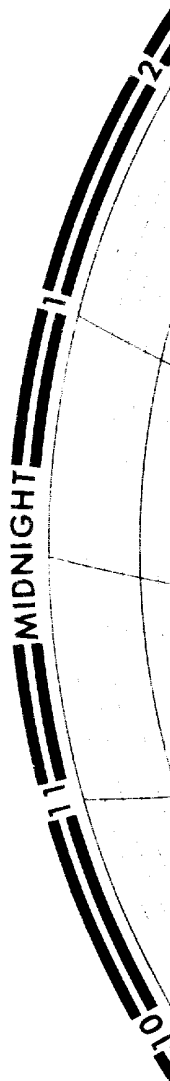
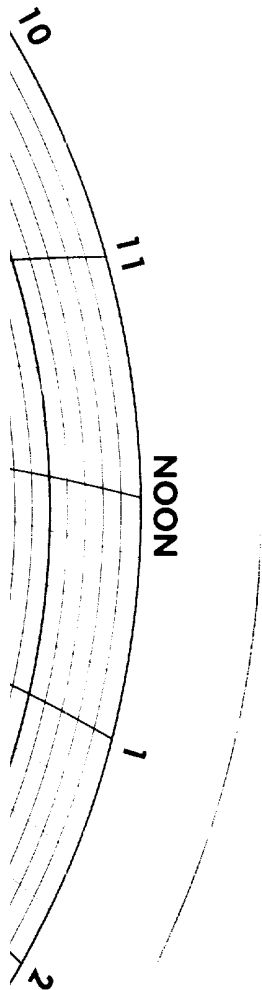
Chart No. 2

Build-up Warren Tubbs
Lower Zone
Jan. 14 & 15, 1998
BR 2121

West-Test, Inc.
Witness
Mel E. Shannon

6 PM

6 AM



6 AM

Collins & Ware, Inc.
Payday No. 1
Packer Leakage Test



GRAPHIC CONTROLS CORPORATION
BUFFALO, NEW YORK

Chart No 3

Pump Blinabry
Upper Zone

JAN. 15 & 16, 98

BR 2121

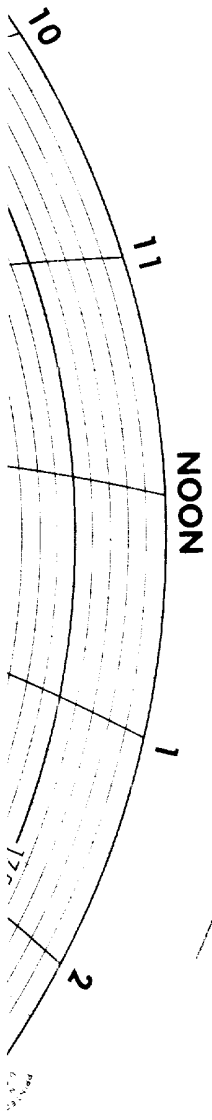
open Blinabry

West-Test, Inc.

Witness:

W. E. Thompson

6 PM



12-20-57
15262728293031-12-20-57
↑
FEB 1948
Received
Hobbs
OCD