

UNIT
DEPARTMENT
BUREAU OF

APPLICATION FOR PERMIT

OPER. OGRID NO. 5073
PROPERTY NO. 3127
POOL CODE 62965
EFF. DATE 1/9/97
API NO. 30-025-33771DATE
88FORM APPROVED
OMB NO. 1004-0136
Expires: February 28, 1995

1a. TYPE OF WORK

DRILL ☒DEEPEN ☐

b. TYPE OF WELL

OIL
WELL ☒GAS
WELL ☐OTHER ☐SINGLE
ZONE ☒MULTIPLE
ZONE ☐

2. NAME OF OPERATOR

Conoco, Inc.

(915) 686-6548

3. ADDRESS AND TELEPHONE NO.

10 Desta Dr. Ste 100W, Midland, TX 79705

4. LOCATION OF WELL (Report location clearly and in accordance with any State requirements.)*

At surface

1980' FNL & 1980' FEL

At proposed prod. zone 1980' FNL & 1980' FEL

Unit G

14. DISTANCE IN MILES AND DIRECTION FROM NEAREST TOWN OR POST OFFICE*

15. DISTANCE FROM PROPOSED*

LOCATION TO NEAREST
PROPERTY OR LEASE LINE, FT.
(Also to nearest drlg. unit line, if any)

16. NO. OF ACRES IN LEASE

17. NO. OF ACRES ASSIGNED
TO THIS WELL

40

18. DISTANCE FROM PROPOSED LOCATION*
TO NEAREST WELL, DRILLING, COMPLETED,
OR APPLIED FOR, ON THIS LEASE, FT.

19. PROPOSED DEPTH

6775'

20. ROTARY OR CABLE TOOLS

Rotary

21. ELEVATIONS (Show whether DF, RT, GR, etc.)

3527'

22. APPROX. DATE WORK WILL START*

1/15/96

23.

PROPOSED CASING AND CEMENTING PROGRAM CONTROLLED WATER BASIN

SIZE OF HOLE	GRADE SIZE OF CASING	WEIGHT PER FOOT	SETTING DEPTH	QUANTITY OF CEMENT
12-1/4"	8-5/8" K-55	24#	1500'	705 circ. WITNESS
7-7/8"	5-1/2" K-55	15.5#	6775'	1260 circ.

It is proposed to drill this wellbore as a vertical Blinbry-Tubb producer according to the drilling plan outlined in the following attachments:

1. Well Location & Acreage Dedication Plat (C-102) - Unorthodox location filed with NMOCD
2. Proposed Well Plan Outline
3. Cementing Program
4. Surface Use Plan
5. EXHIBIT A - Vicinity Map
6. EXHIBIT B - Topo & Lease Road Map
7. EXHIBIT C.1-C.4 - road, pipeline, and powerline plats
8. Trailer-mounted Rig Layout
9. BOP and Choke Manifold Specifications (2 diagrams)
10. H2S Drilling Operations Plan & Diagram

An archeological survey will be ordered for this location and forwarded when completed. The undersigned accepts all applicable terms, conditions, stipulations, and restrictions concerning operations conducted on the leased land or portion thereof, as described above and as covered by BLM Bond File No. ES-0085.

IN ABOVE SPACE DESCRIBE PROPOSED PROGRAM: If proposal is to deepen, give data on present productive zone and proposed new productive zone. If proposal is to drill or deepen directionally, give pertinent data on subsurface locations and measured and true vertical depths. Give blowout preventer program, if any.

24. SIGNED Jerry W. Hoover TITLE Sr. Conservation Coordinator DATE 12/3/96
(This space for Federal or State office use)

PERMIT NO. _____

APPROVAL DATE _____

Application approval does not warrant or certify that the applicant holds legal or equitable title to those rights in the subject lease which would entitle the applicant to conduct operations thereon.
CONDITIONS OF APPROVAL, IF ANY:

(ORIG. SGD.) TONY L. FERGUSON

ADM. MINERALS

APPROVED BY _____

TITLE _____

DATE 1-3-97

*See Instructions On Reverse Side

Title 18 U.S.C. Section 1001, makes it a crime for any person knowingly and willfully to make to any department or agency of the United States any false, fictitious or fraudulent statements or representations as to any matter within its jurisdiction.

District I
PO Box 1980, Hobbs, NM 88241-1980
District II
PO Drawer DD, Artesia, NM 88211-0719
District III
1000 Rio Brazos Rd., Aztec, NM 87410
District IV
PO Box 2088, Santa Fe, NM 87504-2088

State of New Mexico
Energy, Minerals & Natural Resources Department
OIL CONSERVATION DIVISION
PO Box 2088
Santa Fe, NM 87504-2088

Form C-102
Revised February 21, 1994
Instructions on back
Submit to Appropriate District Office
State Lease - 4 Copies
Fee Lease - 3 Copies

☐ AMENDED REPORT

WELL LOCATION AND ACREAGE DEDICATION PLAT

*API Number 30-025-33771		*Pool Code 62965	*Pool Name Warren Blinebry-Tubb
*Property Code 003127	*Property Name WARREN UNIT BLINEBRY-TUBB WF		*Well Number 102
*OGRID No. 005073	*Operator Name CONOCO INC.		*Elevation 3527'

¹⁰ Surface Location

UL or lot no.	Section	Township	Range	Lot Idn	Feet from the	North/South line	Feet from the	East/West line	County
G	34	20-S	38-E		1980	NORTH	1980	EAST	LEA

¹¹ Bottom Hole Location If Different From Surface

UL or lot no.	Section	Township	Range	Lot Idn	Feet from the	North/South line	Feet from the	East/West line	County

¹² Dedicated Acres 40	¹³ Joint or Infill	¹⁴ Consolidation Code	¹⁵ Order No.
-------------------------------------	-------------------------------	----------------------------------	-------------------------

NO ALLOWABLE WILL BE ASSIGNED TO THIS COMPLETION UNTIL ALL INTERESTS HAVE BEEN CONSOLIDATED
OR A NON-STANDARD UNIT HAS BEEN APPROVED BY THE DIVISION

¹⁶ 	¹⁷ OPERATOR CERTIFICATION I hereby certify that the information contained herein is true and complete to the best of my knowledge and belief. Signature <i>Jerry W. Hoover</i> JERRY W. HOOVER Printed Name SR. CONSERVATION COORDINATOR Title 12/3/96 Date	
	¹⁸ SURVEYOR CERTIFICATION I hereby certify that the well location shown on this plat was plotted from field notes of actual surveys made by me or under my supervision, and that the same is true and correct to best of my belief. NOVEMBER 25, 1996 Date of Survey Signature and Seal of Professional Surveyor: <i>Earl Foote</i> Certificate Number 8278	

PROPOSED WELL PLAN OUTLINE

WELL NAME
LOCATION

WARREN UNIT B-T NO. 102
1980' FNL & 1980' FEL, SEC. 34, T-20S, R-38E, LEA CO.

TVD IN 1000'	MD	FORMATION TOPS & TYPE	DRILLING PROBLEMS	TYPE OF FORMATION EVALUATION	HOLE SIZE	CASING SIZE	DEPTH	FRAC GRAD	FORMATION PRESSURE GRADIENT	MUD WT	MUD TYPE	DAY
0			POSSIBLE HOLE ENLARGEMENT AND SLOUGHING		12-1/4"				NORMAL	8.4 - 9.5	FRESH	
1		RUSTLER 1430'	WASHOUTS IN SALT SECTION F/1400' - 2700'		7-7/8"	8-5/8" 24# K-55, ST&C 705 sx, circ cmt	1500'			10	BRINE	3
2		YATES 2822'										
3		SEVEN RIVERS 3076'										
4		QUEEN 3634' PENROSE 3776'		MUDLOGGERS ON @ 3500' H2S MONITOR ON @ 3500'								
5		GRAYBURG 3959' SAN ANDRES 4176'	POSSIBLE LOSSES AND SEEPAGE TO TOTAL DEPTH						LESS THAN 8.3			6
6		GLORIETA 5439'	CASES OF DIFFERENT STICKING THROUGH GLORIETA									
7		BLINEBRY MKR. 5883' TUBB 6415' DRINKARD 6715' TD @ 6775'		GR-CAL-DLL-MLL and FDC-CNL-PE-Spect GR 2800'-TD. Pull GR-CAL-CNL to surface. Only run SG across Blinebry-Tubb		5-1/2" 15.5# K-55, LT&C 1260 sx, circ cmt	6775'		LESS THAN 8.3 BHP = 2650 psi	10	STARCH- GEL@TD	15
8												

DATE 8 NOV 1996

APPROVED Roger Williamson
DRILLING ENGINEER

Joe Miller
RESERVOIR ENGINEER

Well Name : Warren Unit #102

Location : 1980' FNL & 1980' FEL Sec 34, T-20S, R-38E, Lea County, New Mexico

Casing Program :

Surface 8 5/8" casing in 12 1/4" Hole at 1500 ft.
Production 5 1/2" casing in 7 7/8" Hole at 6775 ft.

Cementing Program :

Surface

Lead 505 sacks Class C Mixed at 12.7 ppg
Additives 35:65:6 (Poz:Cem:Gel) + 2% CACL2
+ 0.25 pps Cello-Flake

Tail 200 sacks Class C Mixed at 14.8 ppg
Additives 2% A-7P

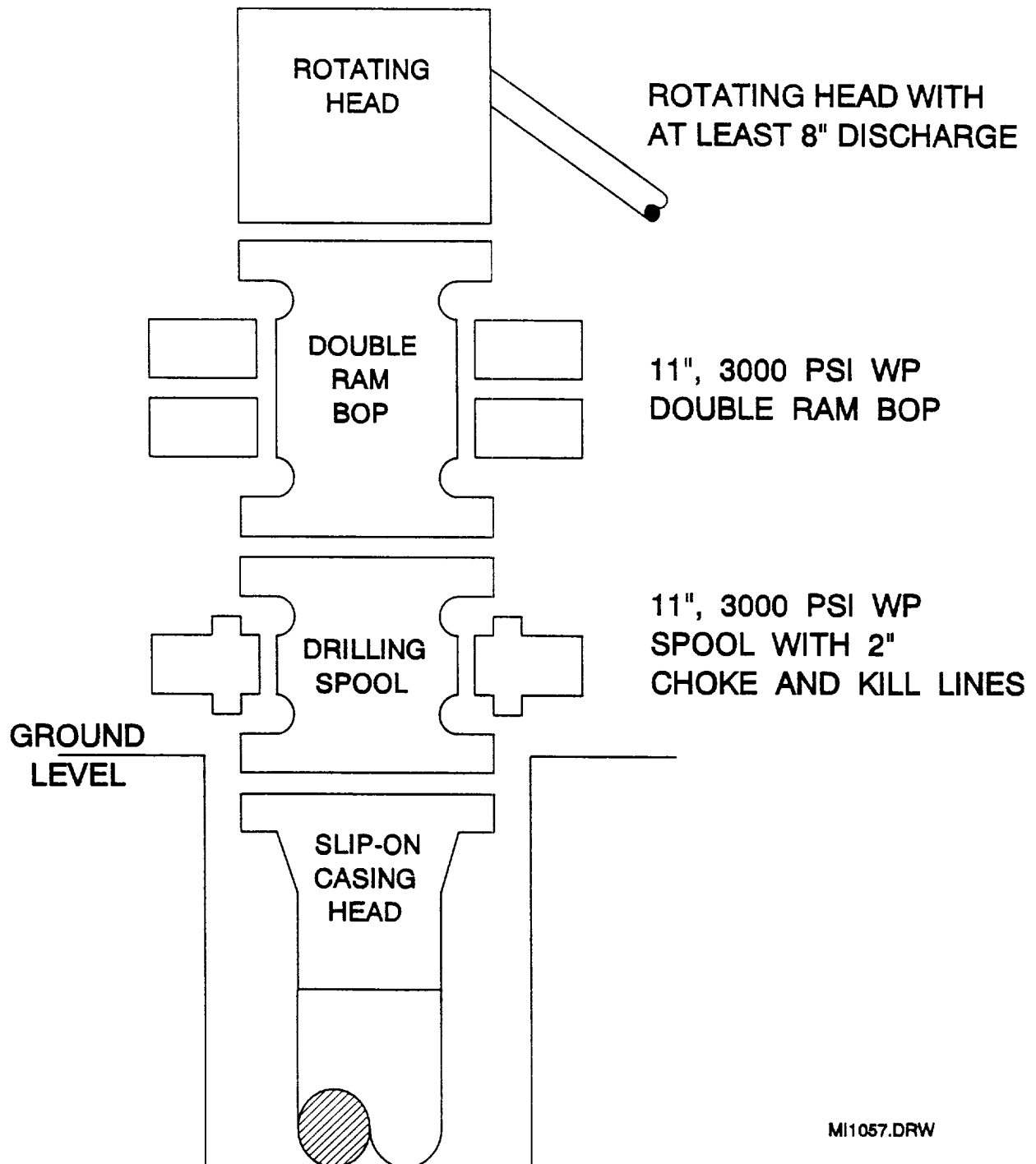
Production

Lead 585 sacks Class C Mixed at 12 ppg
Additives 16% Gel + 2% Salt + 0.3% CD-32 + 0.3% SMS

Tail 675 sacks Class C Mixed at 14.8 ppg
Additives 1.1% FL-62 + 2% BA-90 + 3% Salt + 0.3% CD-32
+ 0.2% SMS

Free Water 0 % **Fluid Loss** 80 cc/30 min.

BOP SPECIFICATIONS



MI1057.DRW

5/7/97

12/1/97

