

## DISTRICT I

P.O. Box 1980, Hobbs, NM 88241-1980

## DISTRICT II

P.O. Box Drawer DD, Artesia, NM 88211-0719

## DISTRICT III

1000 Rio Brazos Rd., Aztec, NM 87410

## DISTRICT IV

P.O. Box 2088, Santa Fe, NM 87504-2088

## State of New Mexico

Energy, Minerals and Natural Resources Department

Form C-101

Revised February 10, 1994

Instructions on back

Submit to Appropriate District Office

State Lease - 6 Copies

Fee Lease - 5 Copies

## OIL CONSERVATION DIVISION

P.O. Box 2088

Santa Fe, New Mexico 87504-2088

☐ AMENDED REPORT

## APPLICATION FOR PERMIT TO DRILL, RE-ENTER, DEEPEN, PLUGBACK, OR ADD A ZONE

<sup>1</sup> Operator Name and Address TEXACO EXPLORATION & PRODUCTION INC. P.O. Box 3109, Midland Texas 79702		<sup>2</sup> OGRID Number 022351
<sup>4</sup> Property Code 10963	<sup>5</sup> Property Name V. M. HENDERSON	<sup>3</sup> API Number 30-025-33782 <sup>6</sup> Well No. 16

<sup>7</sup> Surface Location

UI or lot no.	Section	Township	Range	Lot	Feet From The	North/South Line	Feet From The	East/West Line	County
E	30	21-S	37-E	(2)	1650	NORTH	660	WEST	LEA

<sup>8</sup> Proposed Bottom Hole Location If Different From Surface

UI or lot no.	Section	Township	Range	Lot	Feet From The	North/South Line	Feet From The	East/West Line	County
<sup>9</sup> Proposed Pool 1 BLINEBRY OIL & GAS					<sup>10</sup> Proposed Pool 2 PADDOCK / DRINKARD				

<sup>11</sup> Work Type Code N	<sup>12</sup> WellType Code O	<sup>13</sup> Rotary or C.T. ROTARY	<sup>14</sup> Lease Type Code P	<sup>15</sup> Ground Level Elevation 3499'
<sup>16</sup> Multiple No	<sup>17</sup> Proposed Depth 6900'	<sup>18</sup> Formation BLINEBRY, PADDOCK	<sup>19</sup> Contractor NABORS	<sup>20</sup> Spud Date 1/21/97

<sup>21</sup> Proposed Casing and Cement Program

SIZE OF HOLE	SIZE OF CASING	WEIGHT PER FOOT	SETTING DEPTH	SACKS OF CEMENT	EST. TOP
11	8 5/8	24#	1200'	500 SACKS	SURFACE
7 7/8	5 1/2	15.5#	6900'	1700 SACKS	SURFACE

<sup>22</sup> Describe the proposed program. If this application is to DEEPEN or PLUG BACK give the data on the present productive zone and proposed new productive zone. Describe the blowout prevention program, if any. Use additional sheets if necessary.

## CEMENTING PROGRAM:

SURFACE CASING - 400 SACKS CLASS C W/ 4% GEL, 2% CACL<sub>2</sub> (13.5 PPG, 1.74 CF/S, 9.11 GW/S). F/B 100 SACKS CLASS C W/ 2% CACL<sub>2</sub> (14.8 PPG, 1.34 CF/S, 6.3 GW/S).

PRODUCTION CASING - 1ST STG: 700 SACKS 50/50 POZ CLASS H W/ 2% GEL, 5% SALT, 1/4# FLOCELE (14.2 PPG, 1.35 CF/S, 6.3 GW/S). DV TOOL @ 4000' - 2ND STG: 900 SACKS 35/65 POZ CLASS H W/ 6% GEL, 5% SALT, 1/4# FLOCELE (12.8 PPG, 1.94 CF/S, 10.4 GW/S). F/B 100 SACKS CLASS H (15.6 PPG, 1.18 CF/S, 5.2 GW/S).

THERE ARE NO OTHER OPERATORS IN THIS QUARTER QUARTER SECTION.

Permit Expires 1 Year From Approval  
Date Unless Drilling Underway

<sup>23</sup> I hereby certify that the rules and regulations of the Oil Conservation Division have been complied with and that the information given above is true and complete to the best of my knowledge and belief.		<b>OIL CONSERVATION DIVISION</b>	
Signature <i>C. Wade Howard</i>		Approved By: ORIGINAL SIGNED BY JERRY SEXTON DISTRICT I SUPERVISOR	
Printed Name C. Wade Howard		Title:	
Title Eng. Assistant		Approval Date: JAN 17 1997 Expiration Date:	
Date 1/14/97	Telephone 688-4606	Conditions of Approval: Attached <input type="checkbox"/>	

DISTRICT I  
P. O. Box 1980, Hobbs, NM 88240

DISTRICT II  
P. O. Drawer DD, Artesia, NM 88210

DISTRICT III  
1000 Rio Brazos Rd., Aztec, NM 87410

DISTRICT IV  
P. O. Box 2088, Santa Fe, NM 87504-2088

State of New Mexico  
Energy, Minerals and Natural Resources Department

OIL CONSERVATION DIVISION  
PO Box 2088  
Santa Fe, NM 87504-2088

Form C-102  
Revised February 10, 1994

Instructions on back

Submit to Appropriate District Office

State Lease-4 copies  
Fee Lease-3 copies

☐ AMENDED REPORT

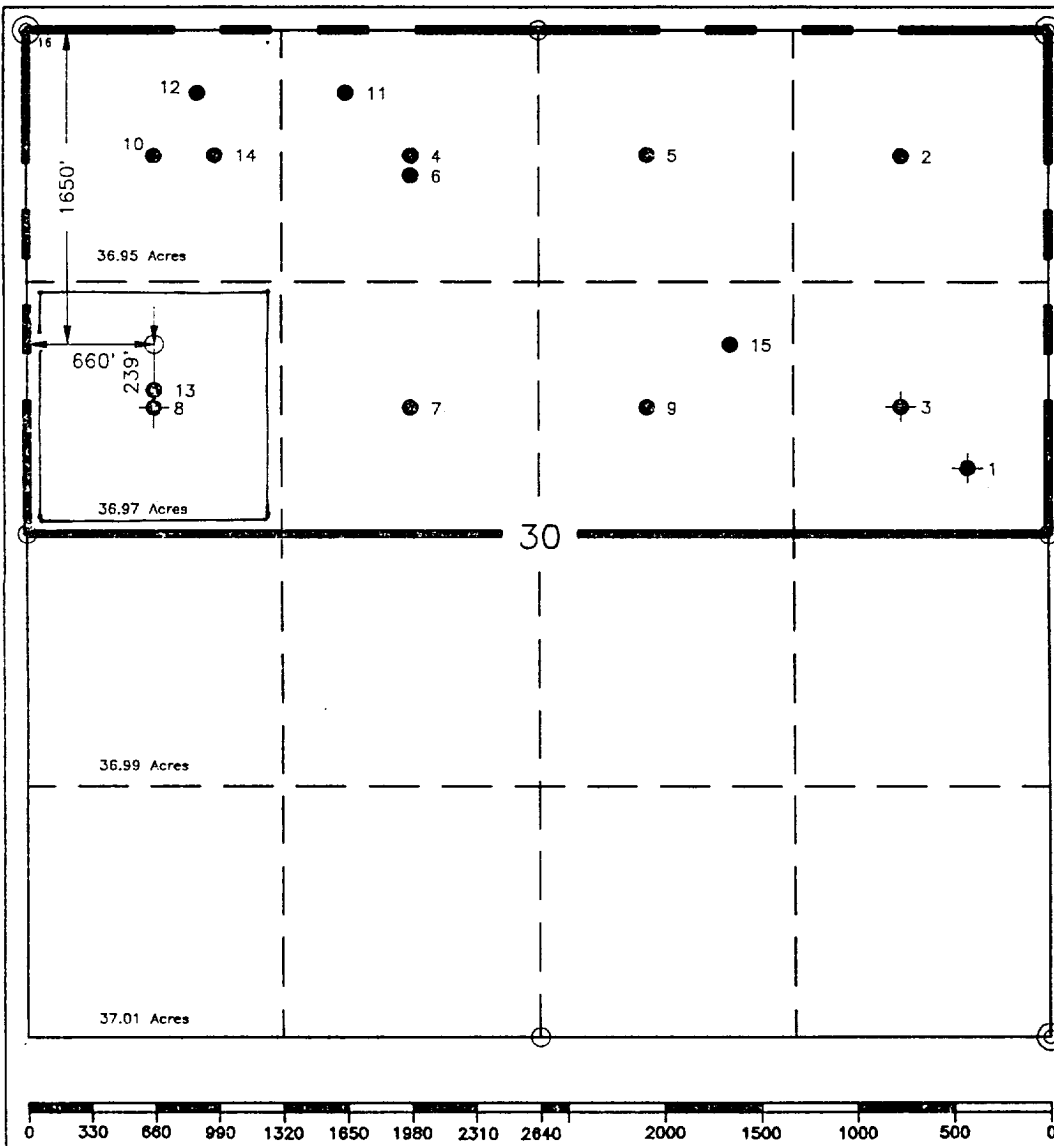
WELL LOCATION AND ACREAGE DEDICATION PLAT

<sup>1</sup> API Number <b>30-025-33782</b>		<sup>2</sup> Pool Code <b>1919D</b>	<sup>3</sup> Pool Name <del>Blindery Oil &amp; Gas, PRODUCTION</del> <b>DRINKARD</b>
<sup>4</sup> Property Code <b>10963</b>	<sup>5</sup> Property Name <b>V. M. Henderson</b>		<sup>6</sup> Well Number <b>16</b>
<sup>7</sup> GRID No. <b>22351</b>	<sup>8</sup> Operator Name <b>TEXACO EXPLORATION &amp; PRODUCTION, INC.</b>		<sup>9</sup> Elevation <b>3499'</b>

<sup>10</sup> Surface Location									
UL or lot no. <b>E</b>	Section <b>30</b>	Township <b>21-S</b>	Range <b>37-E</b>	Lot Idn	Feet from the <b>1650'</b>	North/South line <b>North</b>	Feet from the <b>660'</b>	East/West line <b>West</b>	<sup>7</sup> County <b>Lea</b>

<sup>11</sup> Bottom Hole Location If Different From Surface									
UL or lot no.	Section	Township	Range	Lot Idn	Feet from the	North/South line	Feet from the	East/West line	<sup>7</sup> County
<sup>12</sup> Dedicated Acres <b>36.97</b>		<sup>13</sup> Joint or Infill		<sup>14</sup> Consolidation Code		<sup>15</sup> Order No.			

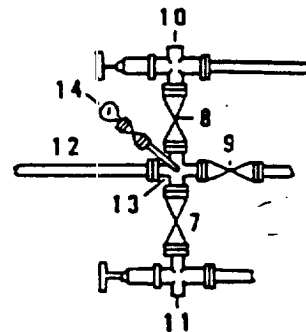
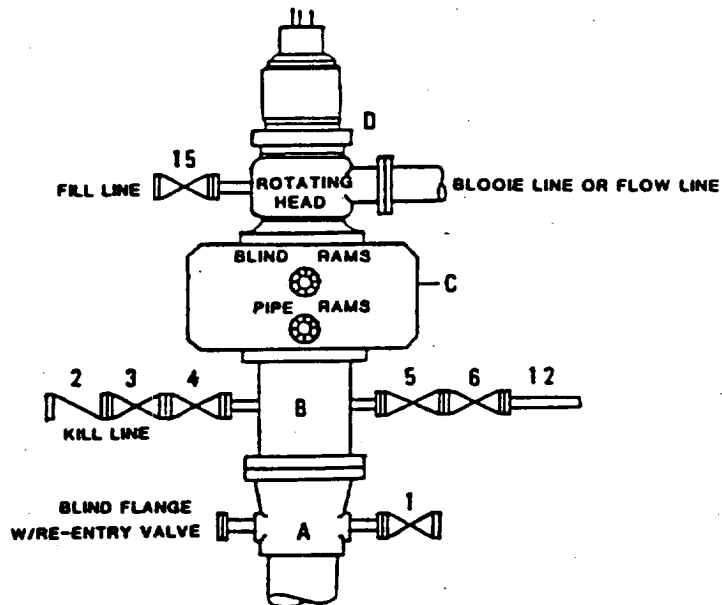
NO ALLOWABLE WILL BE ASSIGNED TO THIS COMPLETION UNTIL ALL INTERESTS HAVE BEEN CONSOLIDATED  
OR A NON-STANDARD UNIT HAS BEEN APPROVED BY THE DIVISION.



<sup>17</sup> OPERATOR CERTIFICATION I hereby certify that the information contained herein is true and complete to the best of my knowledge and belief.	
Signature <i>C. Wade Howard</i>	Printed Name <b>C. Wade Howard</b>
Position <b>Engineer's Assistant</b>	
Company <b>Texaco Expl. &amp; Prod. Inc.</b>	
Date <b>January 14, 1997</b>	
<sup>18</sup> SURVEYOR CERTIFICATION I hereby certify that the well location shown on this plat was plotted from field notes of actual surveys made by me or under my supervision, and that the same is true and correct to the best of my knowledge and belief.	
Date Surveyed <b>January 10, 1997</b>	
Signature & Seal of Professional Surveyor <i>John S. Piper</i>	
Certificate No. <b>7254 John S. Piper</b>	
Sheet	

**DRILLING CONTROL  
CONDITION II-B 3000 WP  
FOR AIR DRILLING OR  
WHERE NITROGEN OR AIR BLOWS ARE EXPECTED**

H<sub>2</sub>S TRIM REQUIRED  
YES \_\_\_\_\_ NO \_\_\_\_\_



**DRILLING CONTROL**

**MATERIAL LIST - CONDITION II - B**

- |            |   |
|------------|---|
| A          | Texaco Wellhead   |
| B          | 3000# W.P. drilling spool with a 2" minimum flanged outlet for kill line and 3" minimum flanged outlet for choke line.  |
| C          | 3000# W.P. Dual ram type preventer, hydraulic operated with 1" steel, 3000# W.P. control lines (where sub-structure height is adequate, 2 - 3000# W.P. single ram type preventers may be utilized). |
| D          | Rotating Head with fill up outlet and extended Blooie Line.   |
| 1,3,4,7,8, | 2" minimum 3000# W.P. flanged full opening steel gate valve, or Halliburton Lo Torc Plug valve.   |
| 2          | 2" minimum 3000# W.P. back pressure valve.  |
| 5,6,9      | 3" minimum 3000# W.P. flanged full opening steel gate valve, or Halliburton Lo Torc Plug valve.   |
| 12         | 3" minimum schedule 80, Grade "B", seamless line pipe.  |
| 13         | 2" minimum x 3" minimum 3000# W.P. flanged cross.   |
| 10,11      | 2" minimum 3000# W.P. adjustable choke bodies.  |
| 14         | Cameron Mud Gauge or equivalent ( location optional in choke line).   |
| 15         | 2" minimum 3000# W.P. flanged or threaded full opening steel gate valve, or Halliburton Lo Torc Plug valve.   |



TEXACO, INC.  
MIDLAND DIVISION  
MIDLAND, TEXAS



SCALE	DATE	EST NO	DRG NO
DRAWN BY			
CHECKED BY			
APPROVED BY			

EXHIBIT C

DISTRICT I  
P. O. Box 1980, Hobbs, NM 88240

DISTRICT II  
P. O. Drawer DD, Artesia, NM 88210

DISTRICT III  
1000 Rio Brazos Rd., Aztec, NM 87410

DISTRICT IV  
P. O. Box 2088, Santa Fe, NM 87504-2088

State of New Mexico  
Energy, Minerals and Natural Resources Department

OIL CONSERVATION DIVISION

PO Box 2088  
Santa Fe, NM 87504-2088

Form C-102  
Revised February 10, 1994

Instructions on back

Submit to Appropriate District Office

State Lease-4 copies  
Fee Lease-3 copies

☐ AMENDED REPORT

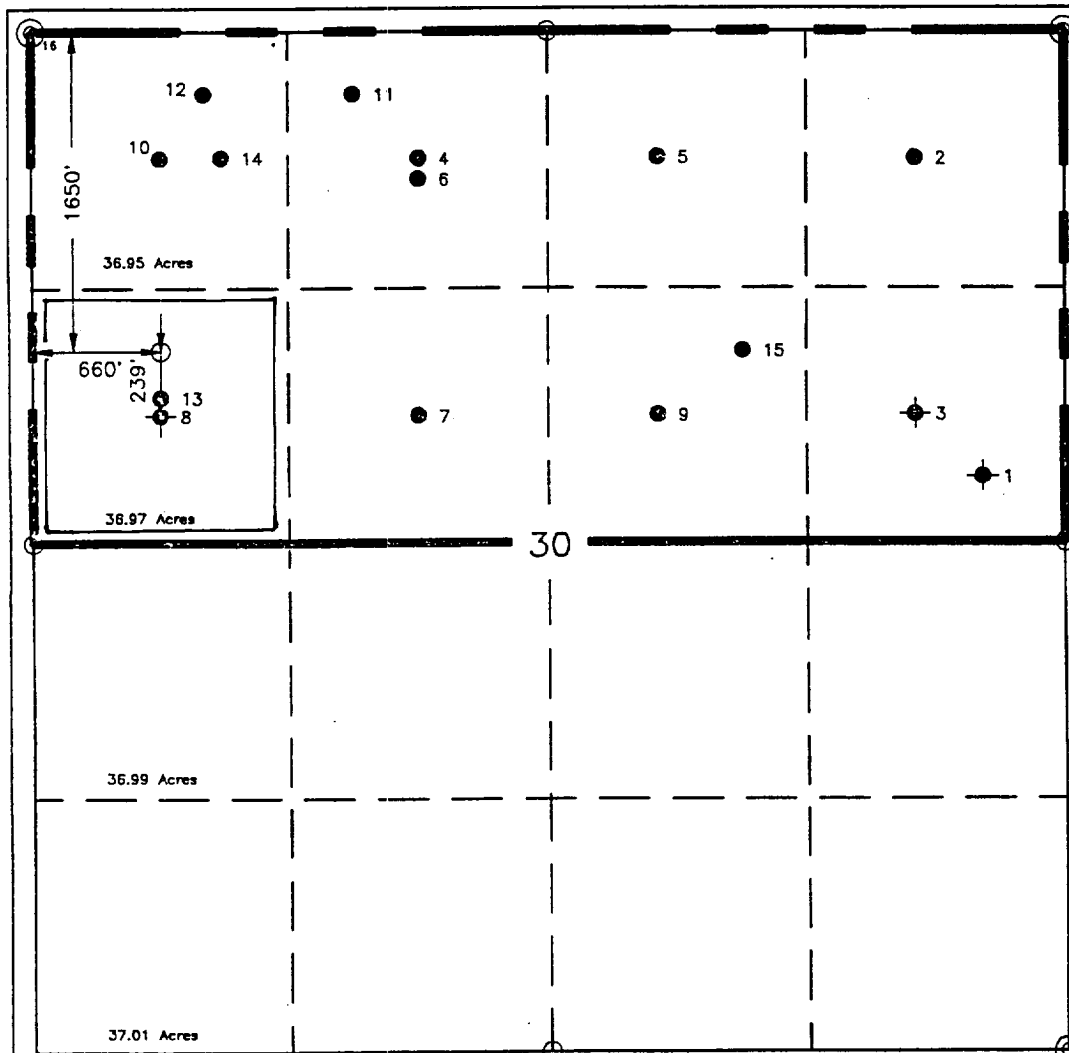
WELL LOCATION AND ACREAGE DEDICATION PLAT

<sup>1</sup> API Number 3D-025-33782	<sup>2</sup> Pool Code 06660	<sup>3</sup> Pool Name Blinebry Oil & Gas ; <del>Paddock</del> ; <del>Drinkard</del>
<sup>4</sup> Property Code 10963	<sup>5</sup> Property Name V. M. Henderson	<sup>6</sup> Well Number 16
<sup>7</sup> OGRID No. 22351	<sup>8</sup> Operator Name TEXACO EXPLORATION & PRODUCTION, INC.	<sup>9</sup> Elevation 3499'

<sup>10</sup> Surface Location									
UL or lot no.	Section	Township	Range	Lot Idn	Feet from the	North/South line	Feet from the	East/West line	<sup>7</sup> County
E	30	21-S	37-E		1650'	North	660'	West	Lea

<sup>11</sup> Bottom Hole Location if Different From Surface									
UL or lot no.	Section	Township	Range	Lot Idn	Feet from the	North/South line	Feet from the	East/West line	<sup>7</sup> County
<sup>12</sup> Dedicated Acres 36.97		<sup>13</sup> Joint or Infill		<sup>14</sup> Consolidation Code		<sup>15</sup> Order No.			

NO ALLOWABLE WILL BE ASSIGNED TO THIS COMPLETION UNTIL ALL INTERESTS HAVE BEEN CONSOLIDATED  
OR A NON-STANDARD UNIT HAS BEEN APPROVED BY THE DIVISION.



<sup>17</sup>OPERATOR CERTIFICATION

I hereby certify that the information contained herein is true and complete to the best of my knowledge and belief.

Signature

*C. Wade Howard*

Printed Name

C. Wade Howard

Position

Engineer's Assistant

Company

Texaco Expl. & Prod. Inc.

Date

January 14, 1997

<sup>18</sup>SURVEYOR CERTIFICATION

I hereby certify that the well location shown on this plat was plotted from field notes of actual surveys made by me or under my supervision, and that the same is true and correct to the best of my knowledge and belief.

Date Surveyed

January 10, 1997

Signature & Seal of  
Professional Surveyor

*John S. Piper*

Certificate No.

7254 John S. Piper

Sheet

DISTRICT I  
P. O. Box 1980, Hobbs, NM 88240

DISTRICT II  
P. O. Drawer DD, Artesia, NM 88210

DISTRICT III  
1000 Rio Brazos Rd., Aztec, NM 87410

DISTRICT IV  
P. O. Box 2088, Santa Fe, NM 87504-2088

State of New Mexico  
Energy, Minerals and Natural Resources Department

Form C-102  
Revised February 10, 1994

Instructions on back

OIL CONSERVATION DIVISION

PO Box 2088  
Santa Fe, NM 87504-2088

Submit to Appropriate District Office

State Lease-4 copies  
Fee Lease-3 copies

☐ AMENDED REPORT

WELL LOCATION AND ACREAGE DEDICATION PLAT

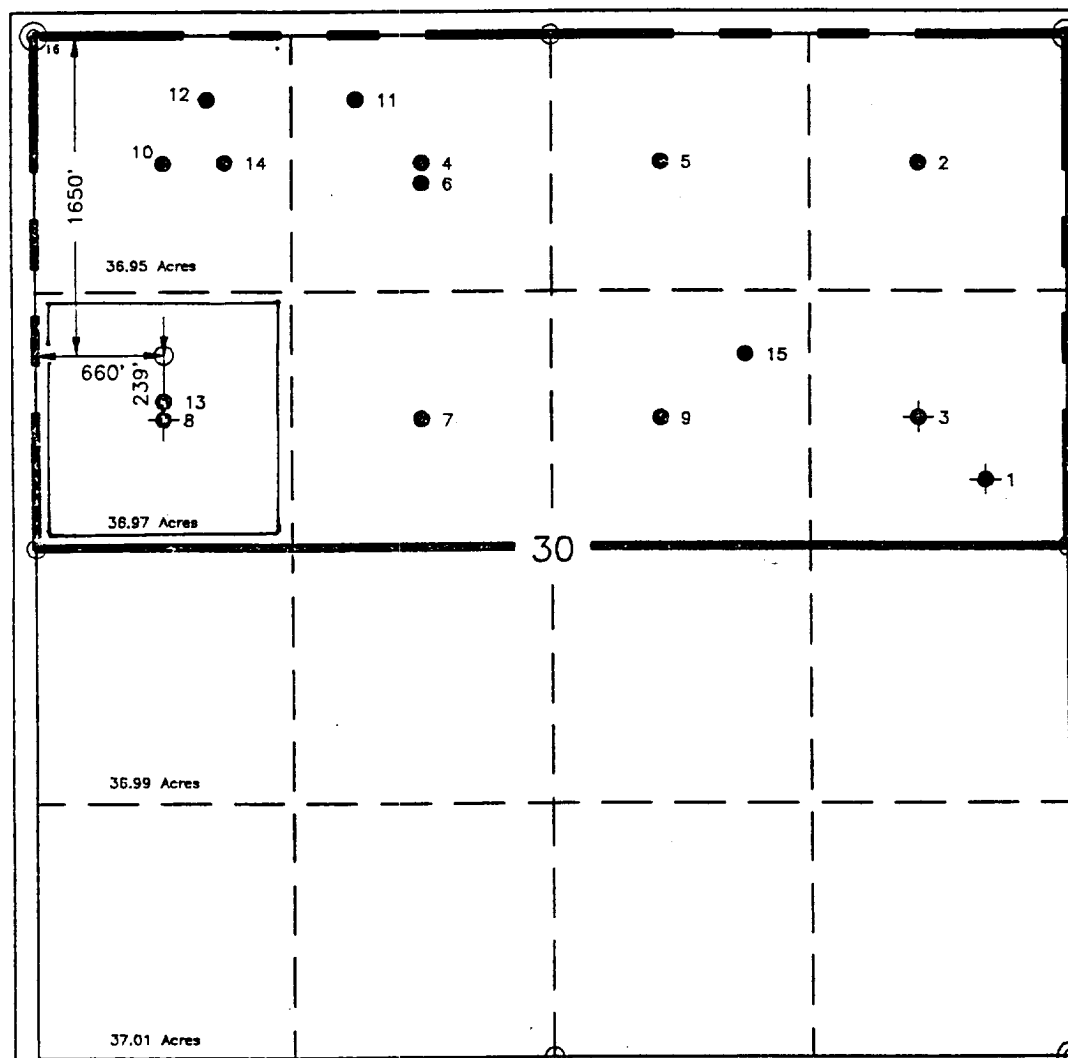
<sup>1</sup> API Number 3D-025-33782		<sup>2</sup> Pool Code 49210		<sup>3</sup> Pool Name <del>Blinberry Oil &amp; Gas ; PADDOCK ; DEINKHARD</del>	
<sup>4</sup> Property Code 10963		<sup>5</sup> Property Name V. M. Henderson			<sup>6</sup> Well Number 16
<sup>7</sup> OGRID No. 22351		<sup>8</sup> Operator Name TEXACO EXPLORATION & PRODUCTION, INC.			<sup>9</sup> Elevation 3499'

<sup>10</sup> Surface Location									
UL or lot no. E	Section 30	Township 21-S	Range 37-E	Lot ldn	Feet from the 1650'	North/South line North	Feet from the 660'	East/West line West	<sup>7</sup> County Lea

<sup>11</sup> Bottom Hole Location If Different From Surface									
UL or lot no.	Section	Township	Range	Lot ldn	Feet from the	North/South line	Feet from the	East/West line	<sup>7</sup> County

<sup>12</sup> Dedicated Acres 36.97	<sup>13</sup> Joint or Infill	<sup>14</sup> Consolidation Code	<sup>15</sup> Order No.
--	-------------------------------	----------------------------------	-------------------------

NO ALLOWABLE WILL BE ASSIGNED TO THIS COMPLETION UNTIL ALL INTERESTS HAVE BEEN CONSOLIDATED  
OR A NON-STANDARD UNIT HAS BEEN APPROVED BY THE DIVISION.



<sup>17</sup> OPERATOR CERTIFICATION

I hereby certify that the information contained herein is true and complete to the best of my knowledge and belief.

Signature

*C. Wade Howard*

Printed Name

C. Wade Howard

Position

Engineer's Assistant

Company

Texaco Expl. & Prod. Inc.

Date

January 14, 1997

<sup>18</sup> SURVEYOR CERTIFICATION

I hereby certify that the well location shown on this plat was plotted from field notes of actual surveys made by me or under my supervision, and that the same is true and correct to the best of my knowledge and belief.

Date Surveyed

January 10, 1997

Signature & Seal of  
Professional Surveyor

*John S. Piper*

Certificate No.

7254 John S. Piper

Sheet