

U. S. DEPARTMENT OF THE INTERIOR  
BUREAU OF LAND MANAGEMENT

P. O. BOX 1980

HOBBS, NEW MEXICO

DEPARTMENT OF

BUREAU OF LAND

APPLICATION FOR PERMIT

OPER. LOGIC NO. 5073  
PROPERTY NO. 308  
POOL CODE 5738D  
EFF. DATE 3/28/97  
ASST. NO. 30-025-33895

FORM APPROVED  
OMB NO. 1004-0136  
Expires February 28, 1995

1a. TYPE OF WORK

DRILL ☒

DEVELOP ☐

b. TYPE OF WELL

OIL WELL ☒

GAS WELL ☐

OTHER ☐

SINGLE ZONE ☒

MULTIPLE ZONE ☐

2. NAME OF OPERATOR

Conoco Inc.

3. ADDRESS AND TELEPHONE NO.

10 Desta Dr. Ste 100W, Midland, Tx. 79705-4500

(915) 686-6548

4. LOCATION OF WELL (Report location clearly and in accordance with any State requirements \*)

At surface

660 FNL & 1980 FEL

At proposed prod. zone

660 FNL & 1980 FEL

Unit B

14. DISTANCE IN MILES AND DIRECTION FROM NEAREST TOWN OR POST OFFICE\*

5. LEASE DESIGNATION AND SERIAL NO

LC 031620A

6 IF INDIAN, ALLOTTEE OR TRIBE NAME

7 UNIT AGREEMENT NAME

8 FARM OR LEASE NAME WELL NO

SEMU Permian

9. API WELL NO

127

10. FIELD AND POOL OR WILDCAT

Grayburg SA

Wildcat

SA

Sec. 25, T-20S, R-37E

12 COUNTY OR PARISH

Lea

13. STATE

NM

5. DISTANCE FROM PROPOSED\*

LOCATION TO NEAREST  
PROPERTY OR LEASE LINE, FT.  
(Also to nearest drlg. unit line, if Any)

16 NO OF ACRES IN LEASE

17. NO. OF ACRES ASSIGNED  
TO THIS WELL

40

8. DISTANCE FROM PROPOSED LOCATION\*

TO NEAREST WELL, DRILLING, COMPLETED,  
OR APPLIED FOR, ON THIS LEASE, FT.

19. PROPOSED DEPTH

4300'

20. ROTARY OR CABLE TOOLS

Rotary

21. ELEVATIONS (Show whether DF, RT, GR, etc.)

3526' GR

22. APPROX. DATE WORK WILL START\*

4/15/97

23

PROPOSED CASING AND CEMENTING PROGRAM

SIZE OF HOLE	GRADE, SIZE OF CASING	WEIGHT PER FOOT	SETTING DEPTH	QUANTITY OF CEMENT
12-1/4"	K-55 8-5/8"	#23	400'	325 WITNESS
7-7/8"	K-55 5-1/2"	#15.5	4300'	750 sxs, circ.

It is proposed to drill a vertical wellbore as a Grayburg-San Andres producer according to the plan submitted in the follow attachments:

1. Well Location and Acreage Dedication Plat (C-102)
2. Proposed Well Plan Outline
3. Surface Use Plan
4. EXHIBIT A: Vicinity and Lease Road Map
5. EXHIBIT B: 7.5 " Quadrangle Topo Map.
6. EXHIBITS C.1 - C.6: Road, pipeline & electric line plats
7. EXHIBIT D: Trailer-mounted rig layout
8. BOP & Choke Manifold Specifications
9. H2S Drilling Operations Plan.
10. Surface Owner Settlement Letter

An archeological survey will be submitted as soon as completed.

The undersigned accepts all applicable terms, conditions, stipulations, and restrictions concerning operations conducted on the leased land or portion thereof, as described above and as covered by BLM Bond File No. ES-0085.

APPROVAL SUBJECT TO  
GENERAL REQUIREMENTS AND  
SPECIAL STIPULATIONS  
ATTACHED

IN ABOVE SPACE DESCRIBE PROPOSED PROGRAM: If proposal is to deepen give data on present productive zone and proposed new productive zone. If proposal is to drill or deepen directionally, give pertinent data on subsurface locations and measured and true vertical depths. Give blowout preventer program, if any.

24.

SIGNED

*Jerry W. Hoover*

TITLE

Jerry W. Hoover

Sr. Conservation Coordinator

DATE

2/24/97

(This space for Federal or State office use)

PERMIT NO.

APPROVAL DATE

Application approval does not warrant or certify that the applicant holds legal or equitable title to those rights in the subject lease which would entitle the applicant to conduct operations thereon.

CONDITIONS OF APPROVAL, IF ANY:

APPROVED BY

TITLE

MINERALS

DATE

\*See Instructions On Reverse Side

Title 18 U.S.C. Section 1001, makes it a crime for any person knowingly and willfully to make to any department or agency of the United States any false, fictitious or fraudulent statements or representations as to any matter within its jurisdiction.

District I  
PO Box 1980, Hobbs, NM 88241-1980  
District II  
PO Drawer DD, Artesia, NM 88211-0719  
District III  
1000 Rio Brazos Rd., Aztec, NM 87410  
District IV  
PO Box 2088, Santa Fe, NM 87504-2088

State of New Mexico  
Energy, Minerals & Natural Resources Department

OIL CONSERVATION DIVISION  
PO Box 2088  
Santa Fe, NM 87504-2088

Form C-102  
Revised February 21, 1994  
Instructions on back  
Submit to Appropriate District Office  
State Lease - 4 Copies  
Fee Lease - 3 Copies

☐ AMENDED REPORT

WELL LOCATION AND ACREAGE DEDICATION PLAT

'API Number 3D-025-33895	'Pool Code 57380	'Pool Name Skaggs Wildcat Wildcat Grayburg/San Andres
'Property Code 003083	'Property Name SEMU Permian	'Well Number 127
'OGRID No. 005073	'Operator Name CONOCO INC.	'Elevation 3526

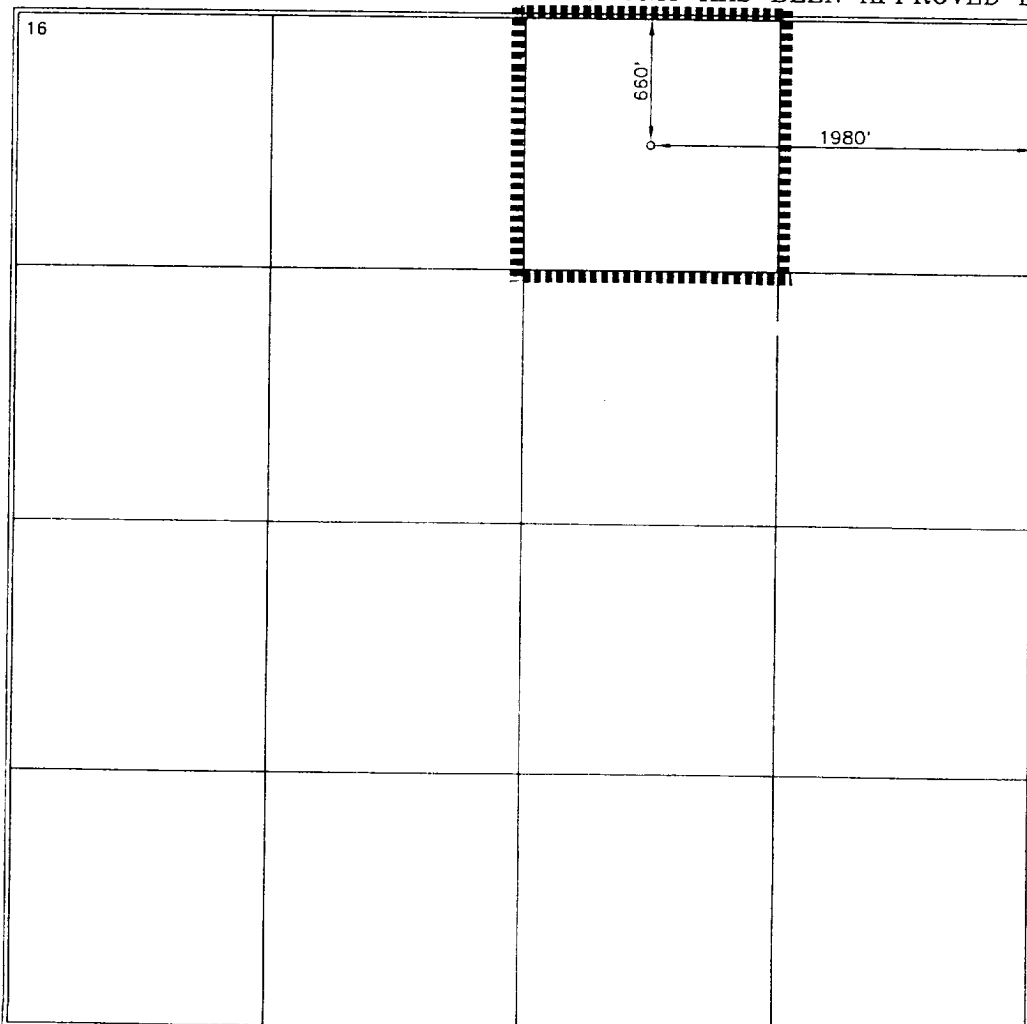
<sup>10</sup> Surface Location

UL or lot no.	Section	Township	Range	Lot Idn	Feet from the	North/South line	Feet from the	East/West line	County
B	25	20-S	37-E		660	NORTH	1980	EAST	LEA

<sup>11</sup> Bottom Hole Location If Different From Surface

UL or lot no.	Section	Township	Range	Lot Idn	Feet from the	North/South line	Feet from the	East/West line	County
'Dedicated Acres 40	'Joint or Infill	'Consolidation Code	'Order No.						

NO ALLOWABLE WILL BE ASSIGNED TO THIS COMPLETION UNTIL ALL INTERESTS HAVE BEEN CONSOLIDATED  
OR A NON-STANDARD UNIT HAS BEEN APPROVED BY THE DIVISION



<sup>17</sup> OPERATOR CERTIFICATION

I hereby certify that the information contained herein is true and complete to the best of my knowledge and belief.

Signature  
JERRY W. HOOVER  
Printed Name  
SR. CONSERVATION COORDINATOR  
Title  
2/24/97  
Date

<sup>18</sup> SURVEYOR CERTIFICATION

I hereby certify that the well location shown on this plat was plotted from field notes of actual surveys made by me or under my supervision, and that the same is true and correct to best of my belief.

JANUARY 26, 1997  
Date of Survey  
Signature and Seal of Professional Surveyor  
8278  
Certificate Number 8278

# PROPOSED WELL PLAN OUTLINE

WELL NAME  
LOCATION

SEMU NO. 127

1980' FEL & 660' FNL, SEC. 25, T-20S, R-37E, LEA CO.

TVD IN 1000'	MD	FORMATION TOPS & TYPE	DRILLING PROB.EMS	TYPE OF FORMATION EVALUATION	HOLE SIZE	CASING SIZE	DEPTH	FRAC GRAD	FORMATION PRESSURE GRADIENT	MUD WT	MUD TYPE	DAY
0			POSSIBLE HOLE ENLARGEMENT AND		12-1/4"	8-5/8"	400'		NORMAL	8.4 - 9.5	FRESH	
1		RUSTLER 1215'	WASHOUTS IN SALT SECTION F/1400' - 2600'			M50 23#, K-55, ST&C 325 sx, circ cmt				10	BRINE	3
2												
3		YATES 2660' SEVEN RIVERS 2711'		MUD LOGGER FROM 2600' TO TD	7-7/8"							
4		QUEEN 3475' PENROSE 3592' GRAYBURG 3746' SAN ANDRES 3895'	PRESSURE DEPLETED POSSIBLE LOSSES AND SEEPAGE TO TOTAL DRILLING THROUGH EXISTING WATERFLOOD	H2S MONITOR ON @ 3600'								
		TD @ 4300'		GR-CAL-DLL-MLL and FDC-CNL-PE-2600' to TD Pull GR/NL-CAL to surface casing		5-1/2"	4300'		LESS THAN 8.3 BHP = 1800 psi	10	STARCH- GEL@TD	8
5						15.5#, K-55, LT&C 750 sx, circ cmt						
6												
7												
8												

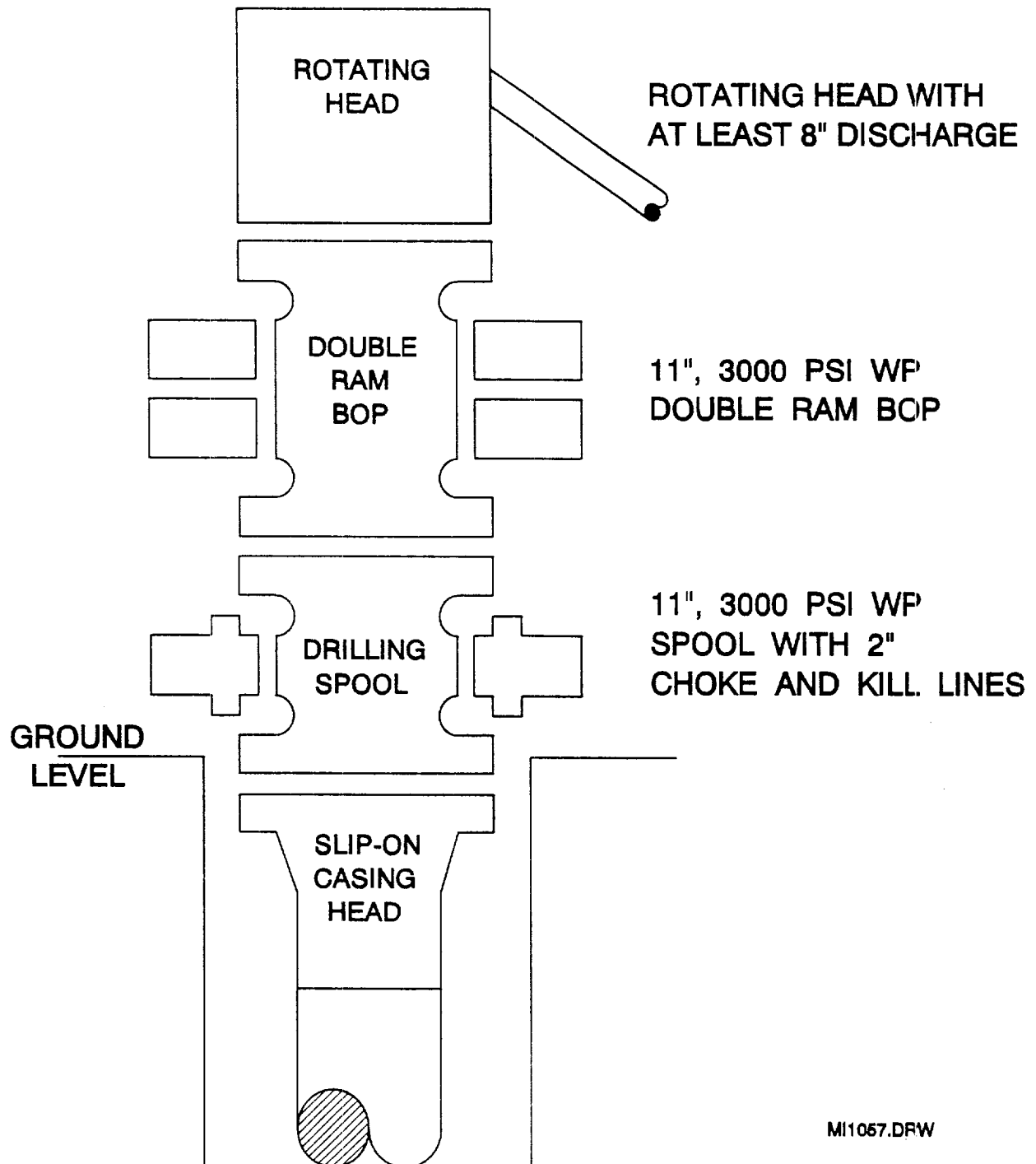
DATE 20 February, 1997

APPROVED Roger Williamson  
DRILLING ENGINEER

Ray Hinchcliff  
RESERVOIR ENGINEER

09:26:35 AM

# BOP SPECIFICATIONS



MI1057.DRW