

OPER. OGRID NO. 5073  
PROPERTY NO. 3122  
DEPARTMENT 96343  
BUREAU 4/10/97  
EFF. DATE  
API NO. 30-025-33915

PLICATE\*  
Instructions on  
se side)

FORM APPROVED  
OMB NO. 1004-0136  
Expires February 28, 1995

APPLICATION FOR

1a. TYPE OF WORK

DRILL ☒

DEEPEN ☐

b. TYPE OF WELL

OIL WELL ☒

GAS WELL ☐

OTHER

SINGLE ZONE ☒

MULTIPLE ZONE ☐

2. NAME OF OPERATOR

Conoco Inc.

a. ADDRESS AND TELEPHONE NO

10 Desta Dr. Ste 100W, Midland, Tx. 79705-4500

(915) 686-6548

4. LOCATION OF WELL (Report location clearly and in accordance with any State requirements \*)

At surface

2080 F&L & 530 FWL

At proposed prod. zone

2080 F&L & 530 FWL

Unit E

14. DISTANCE IN MILES AND DIRECTION FROM NEAREST TOWN OR POST OFFICE\*

5. DISTANCE FROM PROPOSED\*

LOCATION TO NEAREST  
PROPERTY OR LEASE LINE, FT.  
(Also to nearest drlg. unit line, if Any)

16. NO. OF ACRES IN LEASE

17. NO. OF ACRES ASSIGNED  
TO THIS WELL

8. DISTANCE FROM PROPOSED LOCATION\*  
TO NEAREST WELL, DRILLING, COMPLETED,  
OR APPLIED FOR, ON THIS LEASE, FT.

19. PROPOSED DEPTH

20. ROTARY OR CABLE TOOLS

21. ELEVATIONS (Show whether DF, RT, GR, etc.)

3534' GR

22. APPROX. DATE WORK WILL START\*

5/15/97

23. PROPOSED CASING AND CEMENTING PROGRAM

SIZE OF HOLE	GRADE, SIZE OF CASING	WEIGHT PER FOOT	SETTING DEPTH	QUANTITY OF CEMENT
12-1/4"	M-50 K-55 8-5/8"	#23	420'	WITNESS 350 sxs, circ.
7-7/8"	K-55 5-1/2"	#15.5	4750'	960 sxs, circ.

It is proposed to drill a vertical wellbore as a vertical Grayburg-Sandres producer according to the plan submitted in the following attachments:

SAN ANDRES

1. Well Location and Acreage Dedication Plat (C-102)
2. Proposed Well Plan Outline
3. Surface Use Plan
4. EXHIBIT A: Vicinity and Lease Road Map
5. EXHIBIT B: 7.5 " Quadrangle Topo Map.
6. EXHIBIT C.1: Pipeline plat
7. EXHIBIT D: Trailer-mounted rig layout
8. BOP & Choke Manifold Specifications
9. H2S Drilling Operations Plan.
10. Federal surface

An archeological survey will be submitted as soon as completed.

APPROVAL SUBJECT TO  
GENERAL REQUIREMENTS AND  
SPECIAL STIPULATIONS  
ATTACHED

RECEIVED

MAR 07 97

BLM  
ROSWELL, NM

IN ABOVE SPACE DESCRIBE PROPOSED PROGRAM: If proposal is to deepen give data on present productive zone and proposed new productive zone. If proposal is to drill or deepen directionally, give pertinent data on subsurface locations and measured and true vertical depths. Give blowout preventer program, if any.

24. SIGNED Jerry W. Hoover TITLE Sr. Conservation Coordinator DATE 3/6/97

(This space for Federal or State office use)

PERMIT NO. \_\_\_\_\_ APPROVAL DATE \_\_\_\_\_

Application approval does not warrant or certify that the applicant holds legal or equitable title to those rights in the subject lease which would entitle the applicant to conduct operations thereon.  
CONDITIONS OF APPROVAL, IF ANY:

APPROVED BY OPIC SDD (OMV) FERGUSON TITLE ADM, MINERALS DATE 4.7.97

\*See Instructions On Reverse Side

Title 18 U.S.C. Section 1001, makes it a crime for any person knowingly and willfully to make to any department or agency of the United States any false, fictitious or fraudulent statements or representations as to any matter within its jurisdiction.



District I  
PO Box 1980, Hobbs, NM 88241-1980  
District II  
PO Drawer DD, Artesia, NM 88211-0719  
District III  
1000 Rio Brazos Rd., Aztec, NM 87410  
District IV  
PO Box 2088, Santa Fe, NM 87504-2088

State of New Mexico  
Energy, Minerals & Natural Resources Department  
OIL CONSERVATION DIVISION  
PO Box 2088  
Santa Fe, NM 87504-2088

Form C-102  
Revised February 21, 1994  
Instructions on back  
Submit to Appropriate District Office  
State Lease - 4 Copies  
Fee Lease - 3 Copies

☐ AMENDED REPORT

WELL LOCATION AND ACREAGE DEDICATION PLAT

*API Number 30-025-33915		*Pool Code 96343	*Pool Name Warren Grayburg-San Andres
*Property Code 003122	*Property Name WARREN UNIT		*Well Number 140
*OGRID No. 005073	*Operator Name CONOCO INC.		*Elevation 3534'

<sup>10</sup> Surface Location

UL or lot no.	Section	Township	Range	Lot Idn	Feet from the	North/South line	Feet from the	East/West line	County
E	28	20-S	38-E		2080	NORTH	530	WEST	LEA

<sup>11</sup> Bottom Hole Location If Different From Surface

UL or lot no.	Section	Township	Range	Lot Idn	Feet from the	North/South line	Feet from the	East/West line	County
*Dedicated Acres 40		*Joint or Infill		*Consolidation Code		*Order No.			

NO ALLOWABLE WILL BE ASSIGNED TO THIS COMPLETION UNTIL ALL INTERESTS HAVE BEEN CONSOLIDATED OR A NON-STANDARD UNIT HAS BEEN APPROVED BY THE DIVISION

				<sup>17</sup> OPERATOR CERTIFICATION I hereby certify that the information contained herein is true and complete to the best of my knowledge and belief.  Signature: <i>Jerry W. Hoover</i> Printed Name: JERRY W. HOOVER Title: SR. CONSERVATION COORDINATOR Date: 3/6/97
				<sup>18</sup> SURVEYOR CERTIFICATION I hereby certify that the well location shown on this plat was plotted from field notes of actual surveys made by me or under my supervision, and that the same is true and correct to best of my belief.  JANUARY 23, 1997 Date of Survey Signature and Seal of Professional Surveyor: <i>Earl Foot</i> Certificate Number: 8278

# PROPOSED WELL PLAN OUTLINE

WELL NAME  
LOCATION

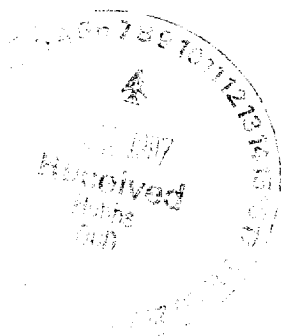
**WARREN UNIT NO. 140**  
**2080' FNL & 530' FWL, SEC.28, T-20S, R-38E, LEA CO.**

TVD IN 1000'	MD	FORMATION TOPS & TYPE	DRILLING PROBLEMS	TYPE OF FORMATION EVALUATION	HOLE SIZE	CASING SIZE	DEPTH	FRAC GRAD	FORMATION PRESSURE GRADIENT	MUD WT	MUD TYPE	DAY
0			POSSIBLE HOLE ENLARGEMENT & SLOUGHING		12-1/4"					8.4	FRESH	
1		RUSTLER 1430'			7-7/8"	8-5/8" 23# M-50, ST&C 350 sxs circ	420"					
2		BASE SALT 2546'								10	BRINE STARCH	3
		YATES 2689'							LESS THAN 8.3			
3		7-RIVERS 2949'										5
		QUEEN 3516'		H2S MONITOR ON @ 3500' No Mudloggers								
		PENROSE 3669'		Continuous core from 3970'-4620'								8
4		SAN ANDRES 4075'										
		TD = 4750'		GR-CAL-DLL-MLL and FDC-CNL-PE-Spect GR-Sonic 2650'-TD. Pull GR-CAL-CNL to surface. Only run SG from 3950'-TD		5 1/2" 15.5#, K-55, LT&C 960 sxs, attempt to circulate	4750		BHP = 1400 psi			20
5												
6												
7												
8												

DATE 13 Feb., 1996

APPROVED Joe Miller  
RESERVOIR ENGINEER

APPROVED Roger Williamson  
DRILLING ENGINEER



**Well Name** : Warren Unit #140

**Location** : 2080' FNL & 530' FWL Sec 28, T-20S, R-38E, Lea County, New Mexico

**Casing Program** :

Surface 8 5/8" casing in 12 1/4" Hole at 420 ft.  
Production 5 1/2" casing in 7 7/8" Hole at 4750 ft.

**Cementing Program** :

**Surface**

Lead 250 sacks Class C Mixed at 13.7 ppg  
Additives 4% Gel + 2% A7P + 0.2% Sodium Metasilicate

Tail 100 sacks Class C Mixed at 14.8 ppg  
Additives 2% A-7P

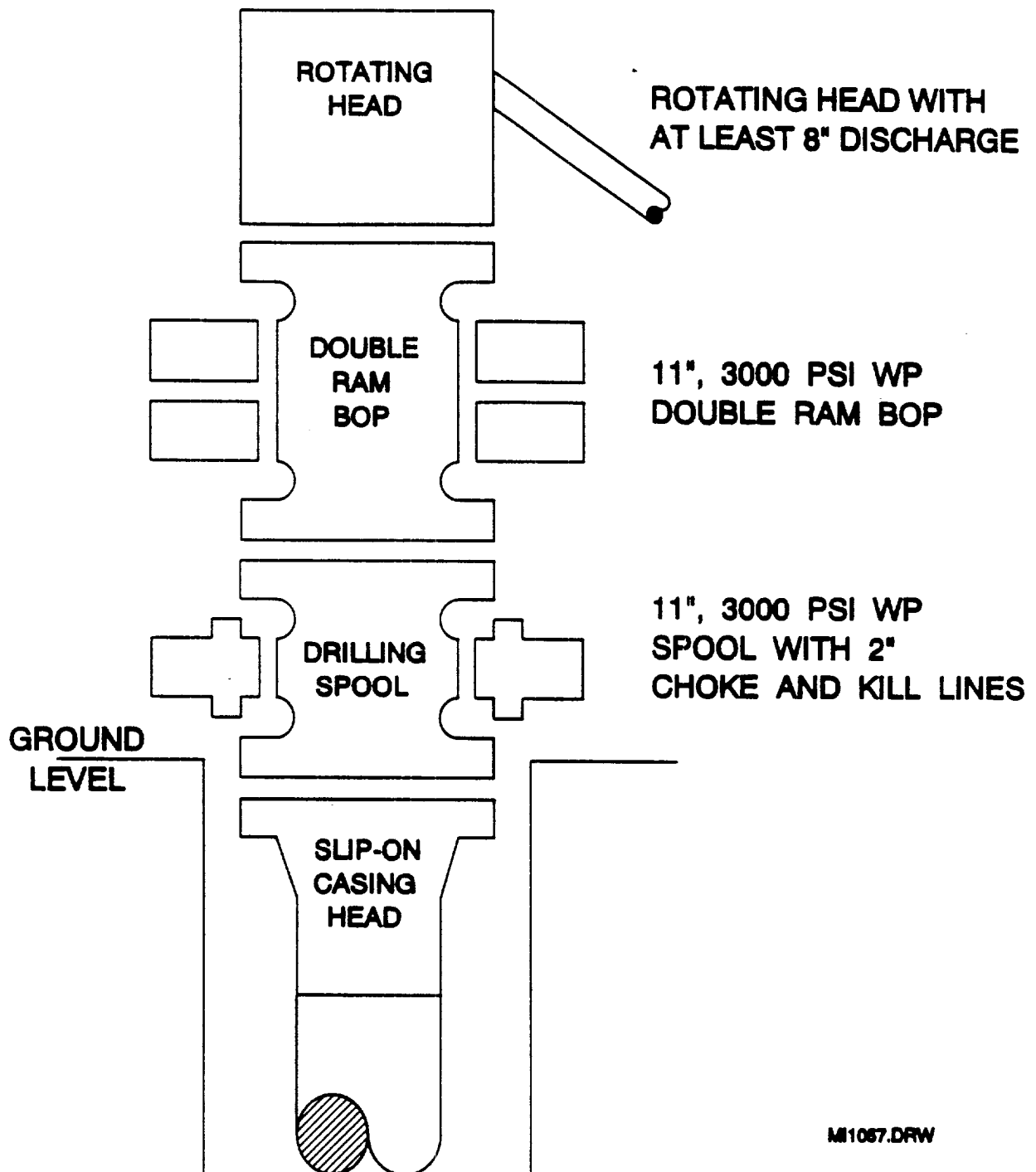
**Production**

Lead 460 sacks Class C Mixed at 12 ppg  
Additives 16% Gel + 3% Salt + 0.3% CD-32 + 0.3% SMS

Tail 500 sacks Class C Mixed at 14.8 ppg  
Additives 1.1% FL-62 + 1% BA-58 + 3% Salt + 0.3% CD-32  
+ 0.2% SMS

Free Water 0 % Fluid Loss 50 cc/30 min.

# BOP SPECIFICATIONS



MI1057.DRW