

N. OPER. OGRID NO. 2000
P. PROPERTY NO. 3127
POOL CODE 62965
DEPARTMENT MIN
BUREAU OFF. DATE 4/10/97
APPLICATION FOR FAPI NO. 30-025-33916

LOCATE*
ions on
e)

FORM APPROVED
OMB NO. 1004-0136
Expires February 28, 1995

1a. TYPE OF WORK

DRILL ☒

DEEPEN ☐

b. TYPE OF WELL

OIL WELL ☒

GAS WELL ☐

OTHER ☐

SINGLE ZONE ☒

MULTIPLE ZONE ☐

2. NAME OF OPERATOR

Conoco Inc.

a. ADDRESS AND TELEPHONE NO

10 Desta Dr. Ste 100W, Midland, Tx. 79705-4500 (915) 686-6548

4. LOCATION OF WELL (Report location clearly and in accordance with any State requirements *)

At surface

1310 FNL & 1510 FEL

At proposed prod. zone

1310 FNL & 1510 FEL

Unit B

14. DISTANCE IN MILES AND DIRECTION FROM NEAREST TOWN OR POST OFFICE*

5. LEASE DESIGNATION AND SERIAL NO

LC 031695B

6. IF INDIAN, ALLOTTEE OR TRIBE NAME

7. UNIT AGREEMENT NAME

8. FARM OR LEASE NAME WELL NO

Warren Unit B1-Ta WF

9. API WELL NO

212

10. FIELD AND POOL, OR WILDCAT

Warren Blinebry-Tubb

11. SEC. T., R., M., OR BLK. AND SURVEY OR AREA

Sec. 33, T-20S, R-38E

12. COUNTY OR PARISH

Lea

13. STATE

NM

5. DISTANCE FROM PROPOSED*

LOCATION TO NEAREST PROPERTY OR LEASE LINE, FT. (Also to nearest drlg. unit line, if Any)

16. NO. OF ACRES IN LEASE

17. NO. OF ACRES ASSIGNED TO THIS WELL

40

8. DISTANCE FROM PROPOSED LOCATION*

TO NEAREST WELL, DRILLING, COMPLETED, OR APPLIED FOR, ON THIS LEASE, FT.

19. PROPOSED DEPTH

6700'

20. ROTARY OR CABLE TOOLS

Rotary

21. ELEVATIONS (Show whether DF, RT, GR, etc)

3515' GR

22. APPROX. DATE WORK WILL START*

5/1/97

23

PROPOSED CASING AND CEMENTING LOG

LEA COUNTY CONTROLLED WATER BASIN

SIZE OF HOLE	GRADE, SIZE OF CASING	WEIGHT PER FOOT	SETTING DEPTH	QUANTITY OF CEMENT
12-1/4"	K-55 8-5/8"	#24	1500'	705 sxs, circ.
7-7/8"	K-55 5-1/2"	#15.5	6700'	1240 sxs, circ.

It is proposed to drill a vertical wellbore as an infill Blinebry-Tubb producer according to the plan submitted in the follow attachments:

1. Well Location and Acreage Dedication Plat (C-102)
2. Proposed Well Plan Outline
3. Surface Use Plan
4. EXHIBIT A: Vicinity and Lease Road Map
5. EXHIBIT B: 7.5 " Quadrangle Topo Map.
6. EXHIBITS C.1 - C.3: Road, pipeline, & electric line plats
7. EXHIBIT D: Trailer-mounted rig layout
8. BOP & Choke Manifold Specifications
9. H2S Drilling Operations Plan.
10. Surface Owner Settlement Letter

An archeological survey will be submitted as soon as completed.

Even though this is normally an unorthodox location, as an infill location in a secondary recovery project it will automatically be approved as orthodox according to recently revised NMOCD Rule 104.

RECEIVED
APPROVAL SUBJECT TO
GENERAL REQUIREMENTS AND
SPECIAL STIPULATIONS
ATTACHED
MAR 07 97
BLM
ROSWELL, NM

IN ABOVE SPACE DESCRIBE PROPOSED PROGRAM: If proposal is to deepen give data on present productive zone and proposed new productive zone. If proposal is to drill or deepen directionally, give pertinent data on subsurface locations and measured and true vertical depths. Give blowout preventer program, if any.

24. SIGNED Jerry W. Hoover TITLE Sr. Conservation Coordinator DATE 3/6/97

(This space for Federal or State office use)

PERMIT NO. _____ APPROVAL DATE _____

Application approval does not warrant or certify that the applicant holds legal or equitable title to those rights in the subject lease which would entitle the applicant to conduct operations thereon.

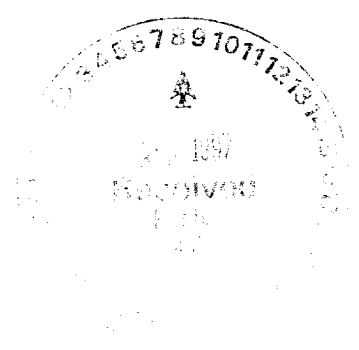
CONDITIONS OF APPROVAL, IF ANY:

APPROVED BY ORIG. SIGNATURE - FERGUSON TITLE ADM. MINERALS DATE 4-7-97

*See Instructions On Reverse Side

Title 18 U.S.C. Section 1001, makes it a crime for any person knowingly and willfully to make to any department or agency of the United States any false, fictitious or fraudulent statements or representations as to any matter within its jurisdiction.

22



District I
PO Box 1980, Hobbs, NM 88241-1980
District II
PO Drawer DD, Artesia, NM 88211-0719
District III
1000 Rio Brazos Rd., Aztec, NM 87410
District IV
PO Box 2088, Santa Fe, NM 87504-2088

State of New Mexico
Energy, Minerals & Natural Resources Department

OIL CONSERVATION DIVISION
PO Box 2088
Santa Fe, NM 87504-2088

Form C-102
Revised February 21, 1994
Instructions on back
Submit to Appropriate District Office
State Lease - 4 Copies
Fee Lease - 3 Copies

☐ AMENDED REPORT

WELL LOCATION AND ACREAGE DEDICATION PLAT

API Number 30-D25-33916		Pool Code 62965	Pool Name Warren Blinebry-Tubb
Property Code 003127	Property Name WARREN UNIT BL-TU WF		Well Number 212
GRID No. 005073	Operator Name CONOCO INC.		Elevation 3515'

¹⁰ Surface Location

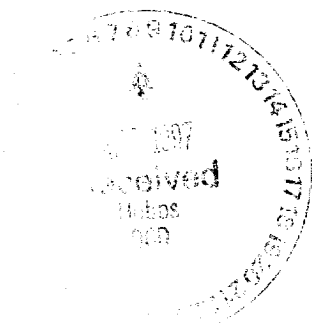
UL or lot no.	Section	Township	Range	Lot Idn	Feet from the	North/South line	Feet from the	East/West line	County
B	33	20-S	38-E		1310	NORTH	1510	EAST	LEA

¹¹ Bottom Hole Location If Different From Surface

UL or lot no.	Section	Township	Range	Lot Idn	Feet from the	North/South line	Feet from the	East/West line	County
Dedicated Acres 40		Joint or Infill		Consolidation Code		Order No.			

NO ALLOWABLE WILL BE ASSIGNED TO THIS COMPLETION UNTIL ALL INTERESTS HAVE BEEN CONSOLIDATED
OR A NON-STANDARD UNIT HAS BEEN APPROVED BY THE DIVISION

16					17 OPERATOR CERTIFICATION I hereby certify that the information contained herein is true and complete to the best of my knowledge and belief. Signature JERRY W. HOOVER Printed Name SR. CONSERVATION COORDINATOR Title 3/6/97 Date	
					18 SURVEYOR CERTIFICATION I hereby certify that the well location shown on this plat was plotted from field notes of actual surveys made by me or under my supervision, and that the same is true and correct to best of my belief. JANUARY 22, 1997 Date of Survey Signature and Seal of Professional Surveyor: Certificate Number	



PROPOSED WELL PLAN OUTLINE

WELL NAME
LOCATION

WARREN UNIT B-T NO. 212
1310' FNL & 1510' FEL, SEC. 33, T-20S, R-38E, LEA CO.

TVD IN 1000'	MD	FORMATION TOPS & TYPE	DRILLING PROBLEMS	TYPE OF FORMATION EVALUATION	HOLE SIZE	CASING SIZE	DEPTH	FRAC GRAD	FORMATION PRESSURE GRADIENT	MUD WT	MUD TYPE	DAY
0			POSSIBLE HOLE ENLARGEMENT AND SLOUGHING		12-1/4"				NORMAL	8.4 - 9.5	FRESH	
1		RUSTLER 1430'	WASHOUTS IN SALT SECTION F/1400' - 2700'		7-7/8"	8-5/8" 24#, K-55, ST&C 705 sx, circ cmt	1500'			10	BRINE	3
2		YATES 2715'										
3		SEVEN RIVERS 2980'										
		QUEEN 3540' PENROSE 3682'		MUDLOGGERS ON @ 3500' H2S MONITOR ON @ 3500'								
4		GRAYBURG 3865' SAN ANDRES 4100'	POSSIBLE LOSSES AND SEEPAGE TO TOTAL DEPTH						LESS THAN 8.3			6
5		GLORIETA 5363'	CASES OF DIFFERENT STICKING THROUGH GLORIETA									
6		BLINEBRY MKR. 5800' TUBB 6339' DRINKARD 6637'										
		TD @ 6700'		GR-CAL-DLL-MLL and FDC-CNL-PE-Spect GR 2700'-TD. Pull GR-CAL-CNL to surface. Only run SG across Blinebry-Tubb		5-1/2" 15 5#, K-55, LT&C 1240 sx, circ cmt	6700'		LESS THAN 8.3 BHP = 2650 psi	10	STARCH- GEL@TD	15
7												
8												

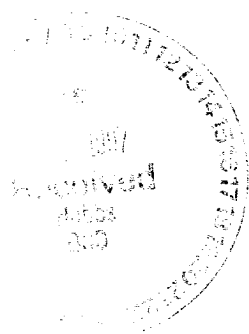
DATE

11 NOV 1996

APPROVED

Roger Williamson
DRILLING ENGINEER

Joe Miller
RESERVOIR ENGINEER



Well Name : Warren Unit #212

Location : 1310' FNL & 1510' FEL Sec 33, T-20S, R-38E, Lea County, New Mexico

Casing Program :

Surface 8 5/8" casing in 12 1/4" Hole at 1500 ft.

Production 5 1/2" casing in 7 7/8" Hole at 6700 ft.

Cementing Program :

Surface

Lead 505 sacks Class C Mixed at 12.7 ppg
Additives 35:65:6 (Poz:Cem:Gel) + 2% CACL2
+ 0.25 pps Cello-Flake

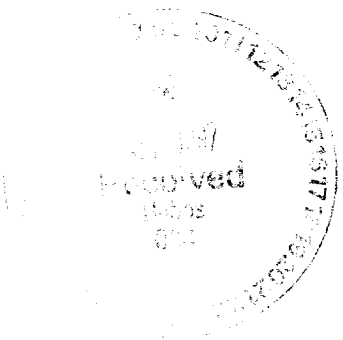
Tail 200 sacks Class C Mixed at 14.8 ppg
Additives 2% A-7P

Production

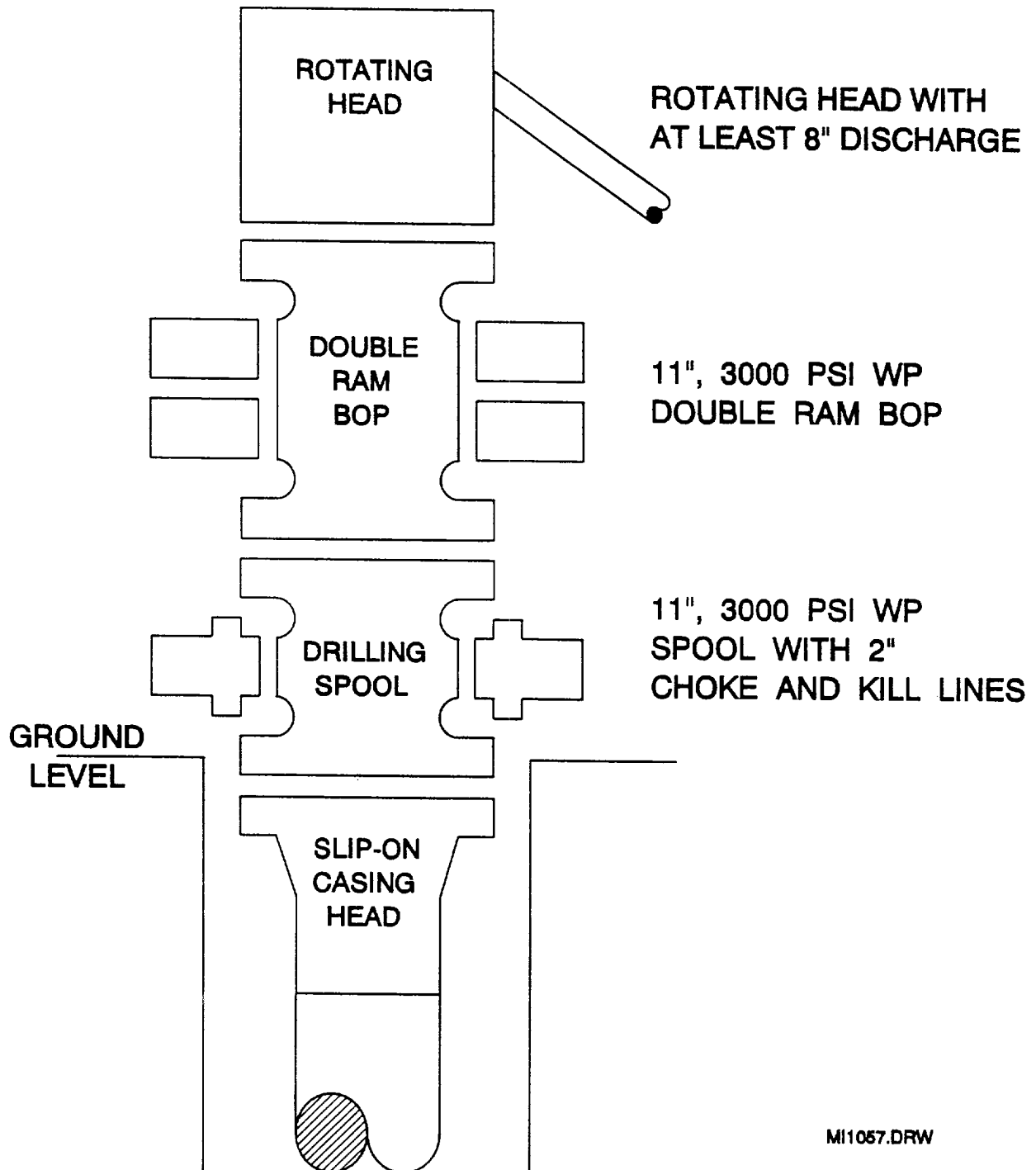
Lead 585 sacks Class C Mixed at 12 ppg
Additives 16% Gel + 2% Salt + 0.3% CD-32 + 0.3% SMS

Tail 655 sacks Class C Mixed at 14.8 ppg
Additives 1.1% FL-62 + 2% BA-90 + 3% Salt + 0.3% CD-32
+ 0.2% SMS

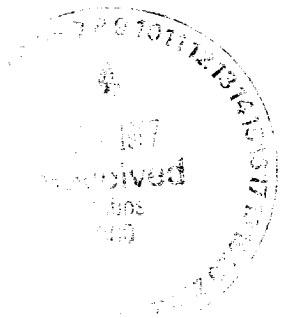
Free Water 0 % **Fluid Loss** 80 cc/30 min.



BOP SPECIFICATIONS



MI1057.DRW



6/2/4/8

1877