

UNITED STATES
DEPARTMENT OF
BUREAU OF LAND

APPLICATION FOR PERM

OPER. OGRID NO 5073

PROPERTY NO 312

POOL CODE 62965

EXP. DATE 4/25/97

API NO 30-025-33941

FORM APPROVED
OMB NO. 1004-0136
Expires February 28, 1995

1a. TYPE OF WORK

DRILL ☒

DRILL

b. TYPE OF WELL

OIL WELL ☒

GAS WELL ☐

OTHER

SINGLE ZONE ☒

MULTIPLE ZONE ☐

2. NAME OF OPERATOR

Conoco Inc.

a. ADDRESS AND TELEPHONE NO

10 Desta Dr. Ste 100W, Midland, Tx. 79705-4500

(915) 686-6548

4. LOCATION OF WELL (Report location clearly and in accordance with any State requirements *)

At surface

2630' FNL & 2630' FEL

At proposed prod. zone

2630' FNL & 2630' FEL

Unit B

14. DISTANCE IN MILES AND DIRECTION FROM NEAREST TOWN OR POST OFFICE*

5. LEASE DESIGNATION AND SERIAL NO

LC 0634580

6. IF INDIAN, ALLOTTEE OR TRIBE NAME

7. UNIT AGREEMENT NAME

8. FARM OR LEASE NAME WELL NO

Warren Unit B1-Tu WF

9. WELL NO

206

10. FIELD AND POOL, OR WILDCAT

Warren Blinbry-Tubb

11. SEC. T., R., M., OR BLK. AND SURVEY OR AREA

Sec. 34, T-20S, R-38E

12. COUNTY OR PARISH

Lea

13. STATE

NM

5. DISTANCE FROM PROPOSED*

LOCATION TO NEAREST PROPERTY OR LEASE LINE, FT. (Also to nearest drlg. unit line, if Any)

16. NO. OF ACRES IN LEASE

17. NO. OF ACRES ASSIGNED TO THIS WELL

40

8. DISTANCE FROM PROPOSED LOCATION*

TO NEAREST WELL, DRILLING, COMPLETED, OR APPLIED FOR, ON THIS LEASE, FT.

19. PROPOSED DEPTH

6750'

20. ROTARY OR CABLE TOOLS

Rotary

21. ELEVATIONS (Show whether DF, RT, GR, etc.)

3523' GR

22. APPROX. DATE WORK WILL START*

5/15/97

23

PROPOSED CASING AND CEMENT **LEA COUNTY CONTROLLED WATER BASIN**

SIZE OF HOLE	GRADE, SIZE OF CASING	WEIGHT PER FOOT	SETTING DEPTH	QUANTITY OF CEMENT
12-1/4"	K-55 8-5/8"	#24	1500'	70 WITNESS
7-7/8"	K-55 5-1/2"	#15.5	6750'	1250 sxs, circ.

It is proposed to drill a vertical wellbore as a vertical Blinbry-Tubb producer according to the plan submitted in the follow attachments:

1. Well Location and Acreage Dedication Plat (C-102)
2. Proposed Well Plan Outline
3. Surface Use Plan
4. EXHIBIT A: Vicinity and Lease Road Map
5. EXHIBIT B: 7.5 " Quadrangle Topo Map.
6. EXHIBITS C.1 - C.4: Pipeline and electric line plats
7. EXHIBIT D: Trailer-mounted rig layout
8. BOP & Choke Manifold Specifications
9. H2S Drilling Operations Plan.
10. Surface Owner Settlement Letter

APPROVAL SUBJECT TO
GENERAL REQUIREMENTS AND
SPECIAL STIPULATIONS
ATTACHED

An archeological survey has already been submitted.

Even though this is normally an unorthodox location, as an infill location in a secondary recovery project it will automatically be approved as orthodox according to recently revised NMOC Rule 104.

IN ABOVE SPACE DESCRIBE PROPOSED PROGRAM: If proposal is to deepen give data on present productive zone and proposed new productive zone. If proposal is to drill or deepen directionally, give pertinent data on subsurface locations and measured and true vertical depths. Give blowout preventer program, if any.

24.

SIGNED

Jerry W. Hoover

TITLE

Jerry W. Hoover

Sr. Conservation Coordinator

DATE 3/21/97

(This space for Federal or State office use)

PERMIT NO

APPROVAL DATE

Application approval does not warrant or certify that the applicant holds legal or equitable title to those rights in the subject lease which would entitle the applicant to conduct operations thereon.

CONDITIONS OF APPROVAL, IF ANY:

WILLIAMSON, ONT. FERGUSON

ADM. MINERALS

APPROVED BY

TITLE

DATE

*See Instructions On Reverse Side

Title 18 U.S.C. Section 1001, makes it a crime for any person knowingly and willfully to make to any department or agency of the United States any false, fictitious or fraudulent statements or representations as to any matter within its jurisdiction.

Revised February 21, 1994

Instructions on back

Submit to Appropriate District Office

State Lease - 4 Copies

Fee Lease - 3 Copies

☐ AMENDED REPORTDistrict I
PO Box 1980, Hobbs, NM 88241-1980District II
PO Drawer DD, Artesia, NM 88211-0719District III
1000 Rio Brazos Rd., Aztec, NM 87410District IV
PO Box 2088, Santa Fe, NM 87504-2088State of New Mexico
Energy, Minerals & Natural Resources DepartmentOIL CONSERVATION DIVISION
PO Box 2088
Santa Fe, NM 87504-2088

WELL LOCATION AND ACREAGE DEDICATION PLAT

API Number 30-025-33941		Pool Code 52695	Pool Name Warren Blinebry-Tubb
Property Code 003127	Property Name WARREN UNIT Blinebry-Tubb wF		Well Number 206
OGRID No. 005073	Operator Name CONOCO INC.		Elevation 3523'

¹⁰ Surface Location

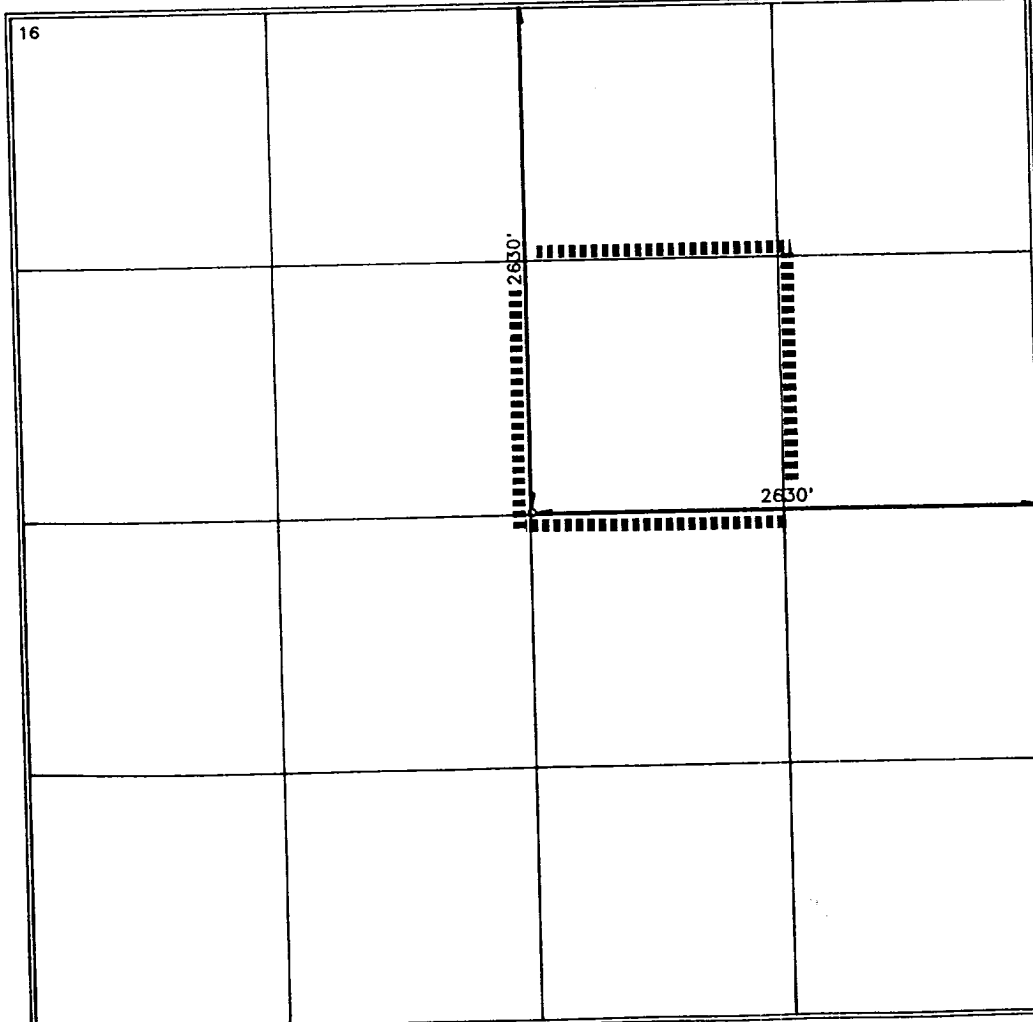
UL or lot no.	Section	Township	Range	Lot Idn	Feet from the	North/South line	Feet from the	East/West line	County
G	34	20-S	38-E		2630	NORTH	2630	EAST	LEA

¹¹ Bottom Hole Location If Different From Surface

UL or lot no.	Section	Township	Range	Lot Idn	Feet from the	North/South line	Feet from the	East/West line	County

¹² Dedicated Acres 40	¹³ Joint or Infill	¹⁴ Consolidation Code	¹⁵ Order No.
-------------------------------------	-------------------------------	----------------------------------	-------------------------

NO ALLOWABLE WILL BE ASSIGNED TO THIS COMPLETION UNTIL ALL INTERESTS HAVE BEEN CONSOLIDATED
OR A NON-STANDARD UNIT HAS BEEN APPROVED BY THE DIVISION

¹⁷ OPERATOR CERTIFICATION

I hereby certify that the information contained herein is true and complete to the best of my knowledge and belief.

Jerry W. Hoover
Signature
JERRY W. HOOVER
Printed Name

SR. CONSERVATION COORDINATOR
Title

3/20/97
Date

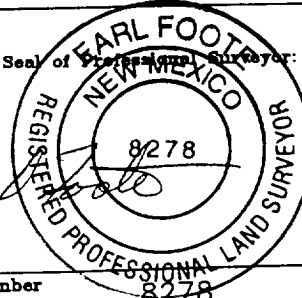
¹⁸ SURVEYOR CERTIFICATION

I hereby certify that the well location shown on this plat was plotted from field notes of actual surveys made by me or under my supervision, and that the same is true and correct to best of my belief.

JANUARY 22, 1997
Date of Survey

Signature and Seal of Professional Surveyor:

Earl Foot
Certificate Number
8278



PROPOSED WELL PLAN OUTLINE

WELL NAME

WARREN UNIT B-T NO. 206

LOCATION

2630' FNL & 2630' FEL, SEC. 34, T-20S, R-38E, LEA CO.

TVD IN 1000'	MD	FORMATION TOPS & TYPE	DRILLING PROBLEMS	TYPE OF FORMATION EVALUATION	HOLE SIZE	CASING SIZE	DEPTH	FRAC GRAD	FORMATION PRESSURE GRADIENT	MUD WT	MUD TYPE	DAY
0			POSSIBLE HOLE ENLARGEMENT AND SLOUGHING		12-1/4"				NORMAL	8.4 - 9.5	FRESH	
1		RUSTLER 1430'	WASHOUTS IN SALT SECTION F/1400' - 2700'		7-7/8"	8-5/8" 24#, K-55, ST&C 705 sx, circ cmt	1500'			10	BRINE	3
2		YATES 2743'										
3		SEVEN RIVERS 3011'										
		QUEEN 3565' PENROSE 3724'		H2S MONITOR ON @ 3500'								
4		GRAYBURG 3953' SAN ANDRES 4131'	POSSIBLE LOSSES AND SEEPAGE TO TOTAL DEPTH						LESS THAN 8.3			6
5		GLORIETA 5371'	CASES OF DIFFERENTI STICKING THROUGH GLORIETA									
6		BLINEBRY MKR. 5914' TUBB 6381' DRINKARD 6681'										
		TD @ 6750'		GR-CAL-DLL-MLL and FDC-CNL-PE-Spect GR 2700'-TD. Pull GR-CAL-CNL to surface. Only run SG across Blinebry-Tubb		5-1/2" 15.5#, K-55, LT&C 1250 sx, circ cmt	6750'		LESS THAN 8.3 BHP = 2650 psi	10	STARCH- GEL@TD	15
7												
8												

DATE

11 NOV 1996

APPROVED

Roger Williamson
DRILLING ENGINEER

Joe Miller
RESERVOIR ENGINEER

Well Name : Warren Unit #206

Location : 2630' FNL & 2630' FEL Sec 34, T-20S, R-38E, Lea County, New Mexico

Casing Program :

Surface 8 5/8" casing in 12 1/4" Hole at 1500 ft.

Production 5 1/2" casing in 7 7/8" Hole at 6750 ft.

Cementing Program :

Surface

Lead 505 sacks Class C Mixed at 12.7 ppg
Additives 35:65:6 (Poz:Cem:Gel) + 2% CACL2
+ 0.25 pps Cello-Flake

Tail 200 sacks Class C Mixed at 14.8 ppg
Additives 2% A-7P

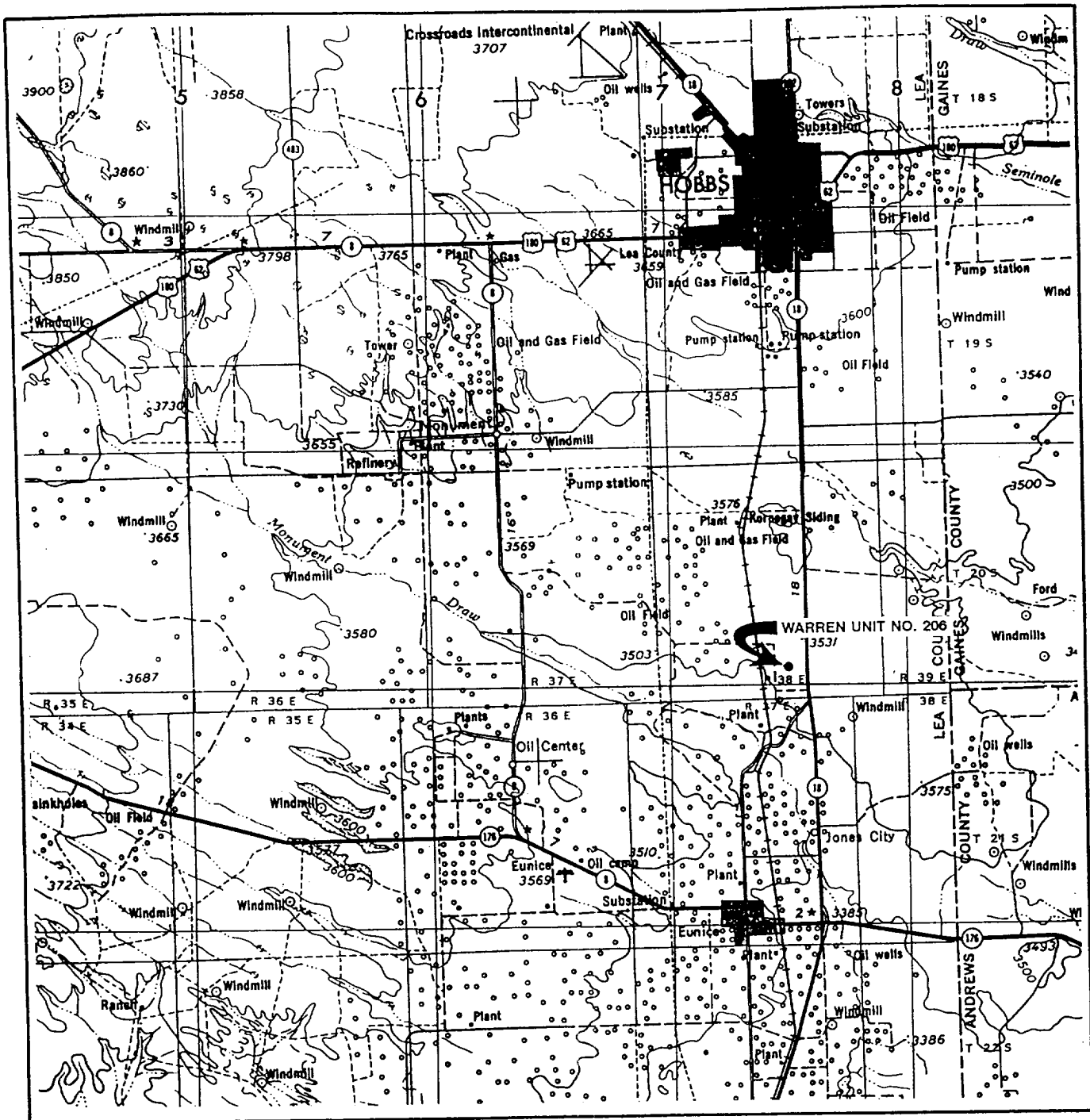
Production

Lead 585 sacks Class C Mixed at 12 ppg
Additives 16% Gel + 2% Salt + 0.3% CD-32 + 0.3% SMS

Tail 665 sacks Class C Mixed at 14.8 ppg
Additives 1.1% FL-62 + 2% BA-90 + 3% Salt + 0.3% CD-32
+ 0.2% SMS

Free Water 0 % **Fluid Loss** 80 cc/30 min.

VICINITY MAP



SCALE: 1" = 4 MILES

SEC. 34 TWP. 20-S RGE. 38-E

SURVEY N.M.P.M

COUNTY LEA STATE NM

DESCRIPTION 2630' FNL & 2630' FEL

ELEVATION 3523'

OPERATOR CONOCO INC.

LEASE WARREN UNIT NO. 206

WEST TEXAS CONSULTANTS, INC.

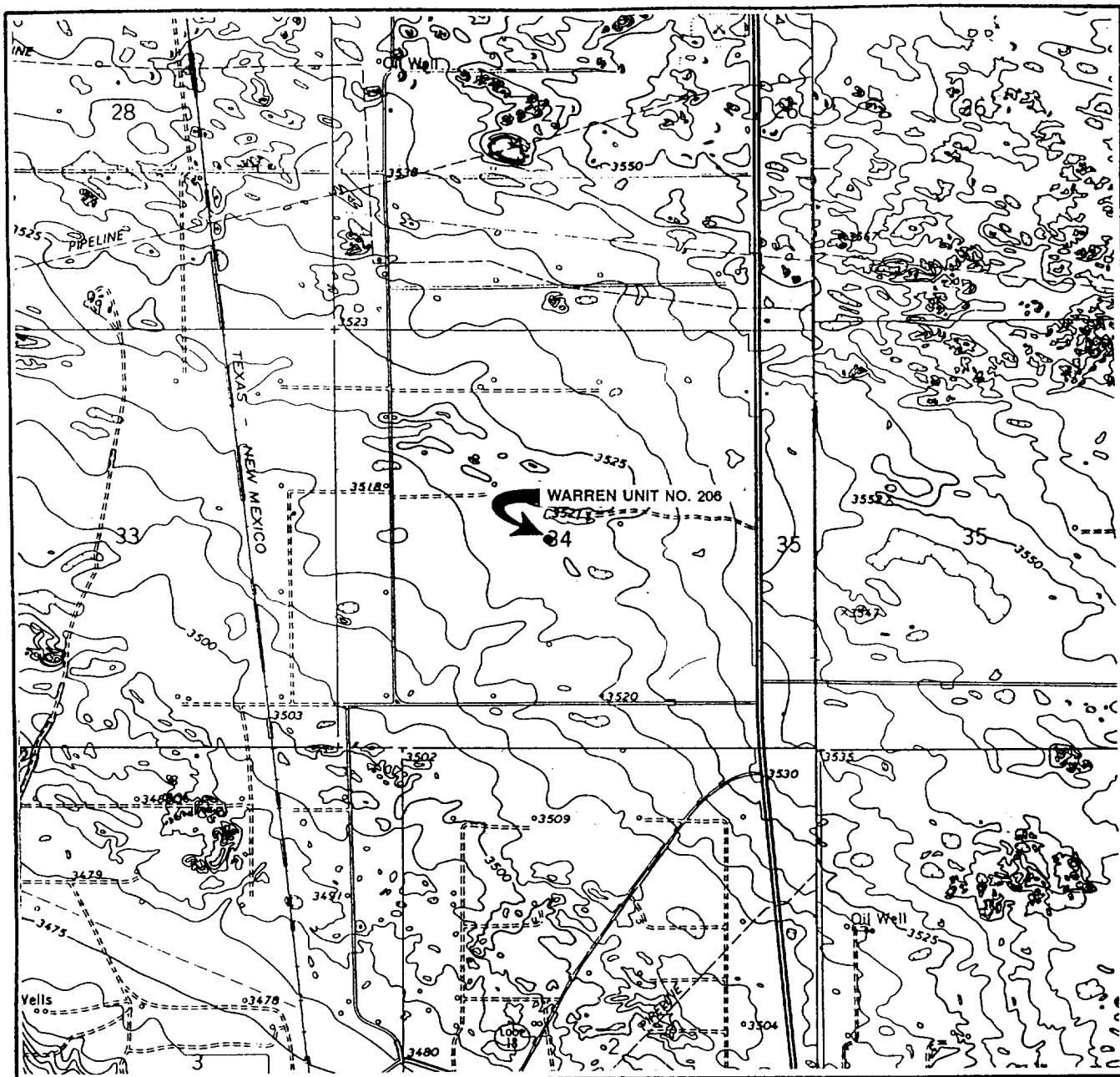
ENGINEERS-PLANNERS-SURVEYORS

MIDLAND, TEXAS

915-685-3800

EXHIBIT A

LOCATION VERIFICATION MAP



SCALE: 1" = 2000'

CONTOUR INTERVAL 10'

SEC. 34 TWP. 20-S RGE. 38-E

SURVEY N.M.P.M.

COUNTY LEA STATE NM

DESCRIPTION 2630' FNL & 2630' FEL

ELEVATION 3523'

OPERATOR CONOCO INC.

LEASE WARREN UNIT NO. 206

USGS TOPO MAP HOBBS SW, NM

WEST TEXAS CONSULTANTS, INC.

ENGINEERS-PLANNERS-SURVEYORS

MIDLAND, TEXAS

915-685-3800

EXHIBIT B

BOP SPECIFICATIONS

