

District I
P.O. Box 1980, Hobbs, NM 88241-1980
District II
811 South First, Artesia, NM 88210
District III
1000 Rio Brazos Rd., Aztec, NM 87410
District IV
2040 South Pacheco, Santa Fe, NM 87505

State of New Mexico
Energy, Minerals & Natural Resources Department
OIL CONSERVATION DIVISION
2040 South Pacheco
Santa Fe, NM 87505

Form C-101
Revised October 18, 1994
Instructions on back
Submit to Appropriate District Office
State Lease - 6 Copies
Fee Lease - 5 Copies

☐ AMENDED REPORT

APPLICATION FOR PERMIT TO DRILL, RE-ENTER, DEEPEN, PLUGBACK, OR ADD A ZONE

1 Operator Name and Address MW Petroleum Corporation 2000 Post Oak Blvd. Ste. 100 Houston, Texas 77056-4400		2 OGRID Number 15422
4 Property Code 20763*		3 API Number 30-025-33946
5 Property Name Deck Estate		6 Well No. 1

7 Surface Location

UL or lot no.	Section	Township	Range	Lot Idn	Feet from the	North/South Line	Feet from the	East/West Line	County
I	35	20S	37E		1980'	South	330'	East	Lea

8 Proposed Bottom Hole Location If Different From Surface

UL or lot no.	Section	Township	Range	Lot Idn	Feet from the	North/South Line	Feet from the	East/West Line	County
9 Proposed Pool 1 North Hardy (Tubb/Drinkard)					10 Proposed Pool 2				

11 Work Type Code A	12 Well Type Code M	13 Cable/Rotary R	14 Lease Type Code P	15 Ground Level Elevation 3492' GR
16 Multiple Yes	17 Proposed Depth 10,600'	18 formation Tubb/Drinkard	19 Contractor	20 Spud Date 5/13/97

21 Proposed Casing and Cement Program

Hole Size	Casing Size	Casing weight/foot	Setting Depth	Sacks of Cement	Estimated TOC
17-1/2"	13-3/8"	48#	415'	445	
11"	8-5/8"	32#, 24#	3900'	1300	
7-7/8"	5-1/2"	17#	7900'	1200	

22 Describe the proposed program. If this application is to DEEPEN or PLUG BACK give the data on the present productive zone and proposed new productive zone. Describe the blowout prevention program, if any. Use additional sheets if necessary.

(See attached)

Permit Expires 1 Year From Approval
Data Release During Uncertainty
Add a Zone

23 I hereby certify that the information given above is true and complete to the best of my knowledge and belief.

Signature: *Deborah K. Hoyt*
Printed Name: Deborah K. Hoyt

Title: Engineering Technician

OIL CONSERVATION DIVISION	
ORIGINAL SIGNED BY	
Approved by: GARY WINK	Title: FIELD REP. N
Approval Date:	Expiration Date:

5/15

C-101 Instructions

Measurements and dimensions are to be in feet/inches. Well locations will refer to the New Mexico Principal Meridian.

IF THIS IS AN AMENDED REPORT CHECK THE BOX LABELED "AMENDED REPORT" AT THE TOP OF THIS DOCUMENT.

- 1 Operator's OGRID number. If you do not have one it will be assigned and filled in by the District office.
- 2 Operator's name and address
- 3 API number of this well. If this is a new drill the OCD will assign the number and fill this in.
- 4 Property code. If this is a new property the OCD will assign the number and fill it in.
- 5 Property name that used to be called "well name"
- 6 The number of this well on the property.
- 7 The surveyed location of this well New Mexico Principal Meridian NOTE: If the United States government survey designates a Lot Number for this location use that number in the "UL or lot no." box. Otherwise use the OCD Unit Letter.
- 8 The proposed bottom hole location of this well at TD
- 9 and 10 The proposed pool(s) to which this well is being drilled.
- 11 Work type code from the following table:

N	New well
E	Re-entry
D	Drill deeper
P	Plugback
A	Add a zone
- 12 Well type code from the following table:

O	Single oil completion
G	Single gas completion
M	Multiple completion
I	Injection well
S	SWD well
W	Water supply well
C	Carbon dioxide well
- 13 Cable or rotary drilling code

C	Propose to cable tool drill
R	Propose to rotary drill
- 14 Lease type code from the following table:

S	State
P	Private
- 15 Ground level elevation above sea level
- 16 Intend to multiple complete? Yes or No
- 17 Proposed total depth of this well
- 18 Geologic formation at TD
- 19 Name of the intended drilling company if known
- 20 Anticipated spud date
- 21 Proposed hole size ID inches, proposed casing OD inches, casing weight in pounds per foot, setting depth of the casing or depth and top of liner, proposed cementing volume, and estimated top of cement
- 22 Brief description of the proposed drilling program and BOP program. Attach additional sheets if necessary.
- 23 The signature, printed name, and title of the person authorized to make this report. The date this report was signed and the telephone number to call for questions about this report.

Deck Estate #1
1980' FSL & 330' FEL
Section 35, Township 20 S, Range 37E
Cass South (Strawn) Field
Lea County, New Mexico

Completion Procedure

4 FEBRUARY, 1998

OBJECTIVES:

- Recomplete well in the Tubb and Drinkard and prepare to commingle all with Strawn.

NOTES:

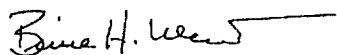
Surface: 13 3/8" 48# H40 @ 415'
Intermediate: 8 5/8" 24#,32# J55 @ 3900'
Production: 5 1/2" 17# K55 @ 7900'
PBTD: 7850'

PROCEDURE:

1. MIRU service rig.
2. TOOH with rods and pump. Pull 2-7/8" tubing.
3. TIH with retrievable bridge plug and set at 7200'. Circulate hole with 3% KCl.
4. Pressure test to 5000 psi for 15 min.
5. Install lubricator. Rig up perforators. Perforate Drinkard with 4" casing gun, 4 jspf 90° phasing 6722'-29', 32'-37', 40'-42', 48'-55', 6760'-72', 6786'-6804'. Correlate with Neutron Log 6/7/97. Total 51', 204 shots.
6. TIH open ended with tubing and packer to 6625' and set packer. Swab well down to 4000'. Acidize with 2000 gals 15% HCL diverting with 200 ball sealers(SG=1.3).
7. Swab back entire load and test. Prepare to stimulate with gelled acid job.

Upon frac and test of Drinkard:

1. TIH with retrievable bridge plug and set at 6650'. Circulate hole with 3% KCl.
2. Pressure test to 5000 psi for 15 min.
3. Install lubricator. Rig up perforators. Perforate Tubb with 4" casing gun, 4 jspf 90° phasing 6418'-22', 30'-34', 40'-46', 66'-78', 6505'-13', 18'-28'. Correlate with Neutron Log 6/7/97. Total 44', 176 shots.
4. TIH open ended with tubing and packer to 6375' and set packer. Swab well down to 4000'. Acidize with 3000 gals 15% HCL diverting with 200 ball sealers(SG=1.3).
5. Swab back entire load and test. Prepare to stimulate with sand frac.



Bruce H. West - Production Engineer

DISTRICT I
P.O. Box 1980, Hobbs, NM 88241-1980

DISTRICT II
P.O. Drawer DD, Artesia, NM 88211-0719

DISTRICT III
1000 Rio Brazos Rd., Aztec, NM 87410

DISTRICT IV
P.O. Box 2088, Santa Fe, NM 87504-2088

State of New Mexico

Energy, Minerals and Natural Resources Department

Form C-102
Revised February 10, 1994
Submit to Appropriate District Office
State Lease - 4 Copies
Fee Lease - 3 Copies

OIL CONSERVATION DIVISION

P.O. Box 2088
Santa Fe, New Mexico 87504-2088

☐ AMENDED REPORT

WELL LOCATION AND ACREAGE DEDICATION PLAT

API Number 3D-025-33946	Pool Code 96356	Pool Name NORTH HARDY (Tubb/Drinkard)
Property Code 20763	Property Name DECK ESTATE	Well Number 1
OGRID No. 15422	Operator Name M. W. PETROLEUM CORP.	Elevation 3492

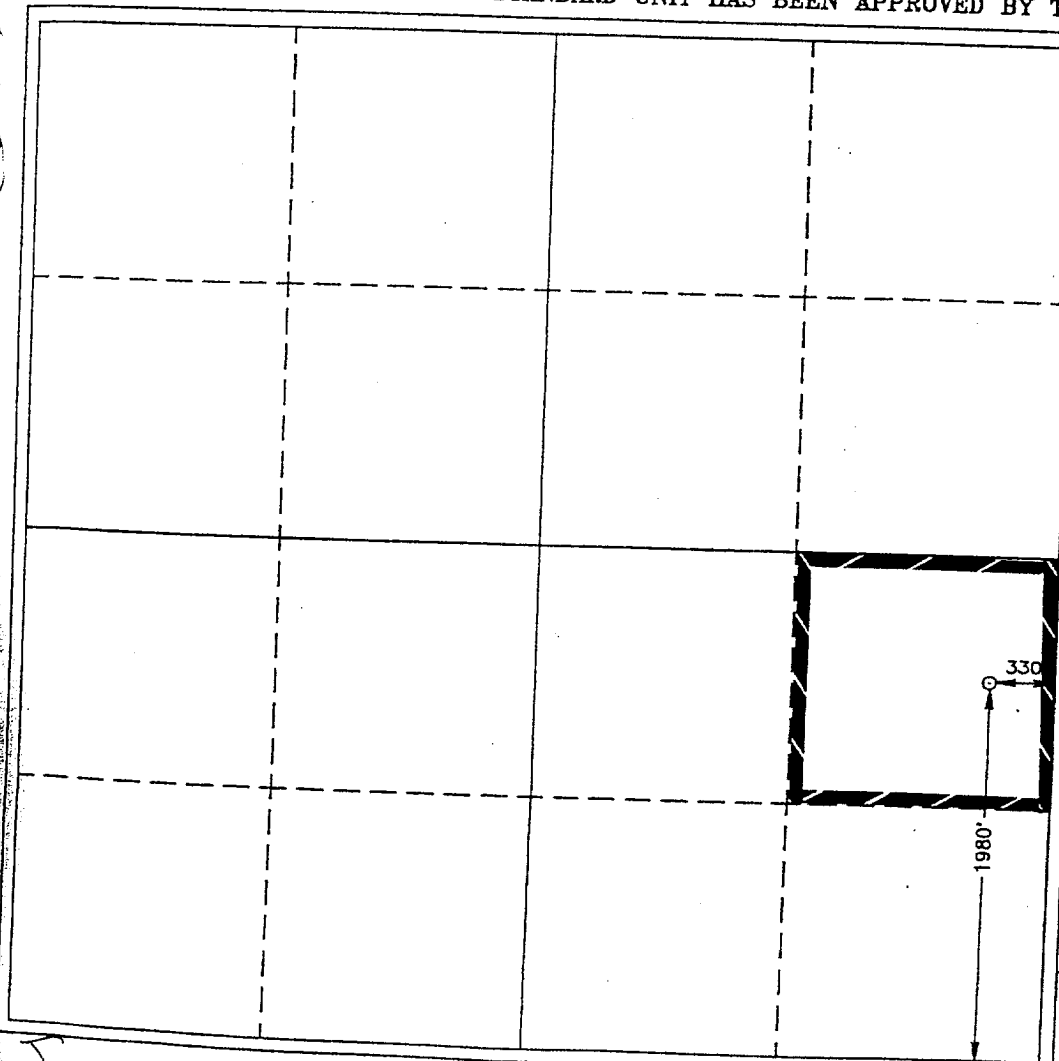
Surface Location

UL or lot No. 1	Section 35	Township 20 S	Range 37 E	Lot Idn	Feet from the 1980	North/South line SOUTH	Feet from the 330	East/West line EAST	County LEA
---------------------------	----------------------	-------------------------	----------------------	---------	------------------------------	----------------------------------	-----------------------------	-------------------------------	----------------------

Bottom Hole Location If Different From Surface

UL or lot No.	Section	Township	Range	Lot Idn	Feet from the	North/South line	Feet from the	East/West line	County
Dedicated Acres 40	Joint or Infill	Consolidation Code	Order No.						

NO ALLOWABLE WILL BE ASSIGNED TO THIS COMPLETION UNTIL ALL INTERESTS HAVE BEEN CONSOLIDATED
OR A NON-STANDARD UNIT HAS BEEN APPROVED BY THE DIVISION



OPERATOR CERTIFICATION

I hereby certify the the information
contained herein is true and complete to the
best of my knowledge and belief.

Joe T Janica
Signature
JOE T JANICA
Printed Name
AGENT
Title
4-23-97
Date

SURVEYOR CERTIFICATION

I hereby certify that the well location shown
on this plat was plotted from field notes of
actual surveys made by me or under my
supervision, and that the same is true and
correct to the best of my belief.

APRIL 15 1997
Date Surveyed
Ronald J. Eidson
Signature & Seal of
Professional Surveyor
3239
P.S. Num. **97-15-0662**
Certification of Professional Surveyor
RONALD J. EIDSON, 3239
GARY G. EIDSON, 12841