

UNITED STATES
DEPARTMENT OF THE INTERIOR
BUREAU OF LAND MANAGEMENT

4-11-97 MM

APPLICATION FOR PERMIT TO DRILL OR DEEPEN

1a. TYPE OF WORK

DRILL ☒DEEPEN ☐

b. TYPE OF WELL

OIL
WELL ☒GAS
WELL ☐

OTHER

SINGLE
ZONE ☒MULTIPLE
ZONE ☐

2. NAME OF OPERATOR

Conoco Inc.

a. ADDRESS AND TELEPHONE NO

10 Desta Dr. Ste 100W, Midland, Tx. 79705-4500

(915) 686-6548

4. LOCATION OF WELL (Report location clearly and in accordance with any State requirements *)

At surface

660' FNL & 1980' FWL

At proposed prod. zone

Unit C 660' FNL & 1980' FWL

14. DISTANCE IN MILES AND DIRECTION FROM NEAREST TOWN OR POST OFFICE*

5. LEASE DESIGNATION AND SERIAL NO

LC 063458

6. IF INDIAN, ALLOTTEE OR TRIBE NAME

7. UNIT AGREEMENT NAME

8. FARM OR LEASE NAME WELL NO

Warren Unit

9. API WELL NO

144

10. FIELD AND POOL, OR WILDCAT

Warren Tubb, East

11. SEC., T., R., M., OR BLK.
AND SURVEY OR AREA

Sec. 25, T-20S, R-38E

12. COUNTY OR PARISH

Lea

13. STATE

NM

5. DISTANCE FROM PROPOSED*

LOCATION TO NEAREST
PROPERTY OR LEASE LINE, FT.
(Also to nearest drlg. unit line, if any)

16. NO. OF ACRES IN LEASE

17. NO. OF ACRES ASSIGNED
TO THIS WELL

40

8. DISTANCE FROM PROPOSED LOCATION*

TO NEAREST WELL, DRILLING, COMPLETED,
OR APPLIED FOR, ON THIS LEASE, FT.

19. PROPOSED DEPTH

6900'

20. ROTARY OR CABLE TOOL

Rotary

21. ELEVATIONS (Show whether DF, RT, GR, etc.)

3566' GR

22. APPROX. DATE WORK WILL START*

5/15/97

23

PROPOSED CASING AND CEMENTING

LEA COUNTY CONTROLLED WATER BASIN

SIZE OF HOLE	GRADE, SIZE OF CASING	WEIGHT PER FOOT	SETTING DEPTH	QUANTITY OF CEMENT
12-1/4"	8-5/8"	#23 M-50	1500'	660 sxs, circ.
7-7/8"	K-55 5-1/2"	#15.5 K-55	6900'	1,285 sxs, circ.

WITNESS

It is proposed to drill a vertical wellbore as a Tubb producer according to the plan submitted in the follow attachments:

1. Well Location and Acreage Dedication Plat (C-102) PER OGRID NO. 5073
 2. Proposed Well Plan Outline PROPERTY NO. 3122
 3. Surface Use Plan POOL CODE 87085
 4. EXHIBIT A: Vicinity and Lease Road Map
 5. EXHIBIT B: 7.5 " Quadrangle Topo Map.
 6. EXHIBIT C.1-C.6: Road, Pipeline, and Electric line plats
 7. EXHIBIT D: Trailer-mounted rig layout
 8. BOP & Choke Manifold Specifications
 9. H2S Drilling Operations Plan.
 10. Surface Owner Settlement Letter
- An archeological survey will be submitted as soon as completed.

APPROVAL SUBJECT TO
GENERAL REQUIREMENTS AND
SPECIAL STIPULATIONS
ATTACHED

The undersigned accepts all applicable terms, conditions, stipulations, and restrictions concerning operations conducted on the leased land or portion thereof, as described above and as covered by BLM Bond File No. ES-0085.

IN ABOVE SPACE DESCRIBE PROPOSED PROGRAM: If proposal is to deepen give data on present productive zone and proposed new productive zone. If proposal is to drill or deepen directionally, give pertinent data on subsurface locations and measured and true vertical depths. Give blowout preventer program, if any.

24. SIGNED Jerry W. Hoover TITLE Sr. Conservation CoordinatorDATE 4/9/97

(This space for Federal or State office use)

PERMIT NO

APPROVAL DATE

Application approval does not warrant or certify that the applicant holds legal or equitable title to those rights in the subject lease which would entitle the applicant to conduct operations thereon.

CONDITIONS OF APPROVAL, IF ANY:

APPROVED BY

TITLE

ADM, MINERALS

DATE

*See Instructions On Reverse Side

District I
PO Box 1980, Hobbs, NM 88241-1980
District II
PO Drawer DD, Artesia, NM 88211-0719
District III
1000 Rio Brazos Rd., Aztec, NM 87410
District IV
PO Box 2088, Santa Fe, NM 87504-2088

State of New Mexico
Energy, Minerals & Natural Resources Department
OIL CONSERVATION DIVISION
PO Box 2088
Santa Fe, NM 87504-2088

Form C-102
Revised February 21, 1994
Instructions on back
Submit to Appropriate District Office
State Lease - 4 Copies
Fee Lease - 3 Copies

☐ AMENDED REPORT

WELL LOCATION AND ACREAGE DEDICATION PLAT

1 API Number 3D-025-33974		2 Pool Code 87085		3 Pool Name Warren Tubb, East		
4 Property Code 00312A		5 Property Name WARREN UNIT			6 Well Number 144	
7 OGRID No. 005073		8 Operator Name CONOCO INC.			9 Elevation 3568'	

10 Surface Location

UL or lot no.	Section	Township	Range	Lot Idn	Feet from the	North/South line	Feet from the	East/West line	County
C	25	20-S	38-E		660	NORTH	1980	WEST	LEA

11 Bottom Hole Location If Different From Surface

UL or lot no.	Section	Township	Range	Lot Idn	Feet from the	North/South line	Feet from the	East/West line	County

12 Dedicated Acres 40	13 Joint or Infill	14 Consolidation Code	15 Order No.
--------------------------	--------------------	-----------------------	--------------

NO ALLOWABLE WILL BE ASSIGNED TO THIS COMPLETION UNTIL ALL INTERESTS HAVE BEEN CONSOLIDATED OR A NON-STANDARD UNIT HAS BEEN APPROVED BY THE DIVISION

<p>16</p> <p>1980'</p> <p>660'</p>	<p>17 OPERATOR CERTIFICATION</p> <p>I hereby certify that the information contained herein is true and complete to the best of my knowledge and belief.</p> <p><i>Jerry W. Hoover</i> Signature JERRY W. HOOVER Printed Name SR. CONSERVATION COORDINATOR Title 4/9/97 Date</p>	
	<p>18 SURVEYOR CERTIFICATION</p> <p>I hereby certify that the well location shown on this plat was plotted from field notes of actual surveys made by me or under my supervision, and that the same is true and correct to best of my belief.</p> <p>MARCH 20, 1997 Date of Survey Signature and Seal of Professional Surveyor: <i>Earl Foot</i> Certificate Number 8278</p>	

PROPOSED WELL PLAN OUTLINE

WELL NAME
LOCATION

WARREN UNIT NO. 144

660' FNL & 1980' FWL, SEC. 25, T-20S, R-38E, LEA CO.

TVD IN 1000'	MD	FORMATION TOPS & TYPE	DRILLING PROBLEMS	TYPE OF FORMATION EVALUATION	HOLE SIZE	CASING SIZE	DEPTH	FRAC GRAID	FORMATION PRESSURE GRADIENT	MUD WT	MUD TYPE	DAY
0			POSSIBLE HOLE ENLARGEMENT AND SLOUGHING		12-1/4"				NORMAL	8.4 - 9.5	FRESH	
1		RUSTLER 1500'	WASHOUTS IN SALT SECTION F/1400' - 2800'		7-7/8"	8-5/8" 23#, M-50, ST&C 660 sx, circ cmt	1500'			10	BRINE	3
2		B/ SALT 2650' YATES 2886'		MUDLOGGERS ON @ 2800'								
3		SEVEN RIVERS 3141'										
		QUEEN 3698' PENROSE 3852'		H2S MONITOR ON @ 3500'								
4		GRAYBURG 4045' SAN ANDRES 4326'	POSSIBLE LOSSES AND SEEPAGE TO TOTAL DEPTH						LESS THAN 8.3			6
5		GLORIETA 5556'	CASES OF DIFFERENT STICKING THROUGH GLORIETA									
6		BLINEBRY MKR. 6029'										
		TUBB 6515' DRINKARD 6829'										
7		TD @ 6900'		GR-CAL-DLL-MLL and FDC-CNL-PE 2850'-TD. Pull GR-CAL-CNL to surface.		5-1/2" 15.5#, K-55, LT&C 1285 sx, circ cmt	6900'		LESS THAN 8.3 BHP = 2500 psi	10	STARCH- GEL@TD	16
8												

DATE 09 APR 1997

APPROVED Roger Williamson
DRILLING ENGINEER

Joe Miller
RESERVOIR ENGINEER

Well Name : Warren Unit #144

Location : 660 FNL, 1980 FWL, SEC. 25, T-20S, R-38E, LEA CO.

Casing Program :

Surface 8 5/8" casing in 12 1/4" Hole at 1500 ft.

Production 5 1/2" casing in 7 7/8" Hole at 6900 ft.

Cementing Program :

Surface

Lead 460 sacks Class C Mixed at 12.7 ppg
Additives 35:65:6 (Poz:Cem:Gel) + 2% CACL2
+ 0.25 pps Cello-Flake

Tail 200 sacks Class C Mixed at 14.8 ppg
Additives 2% A-7P

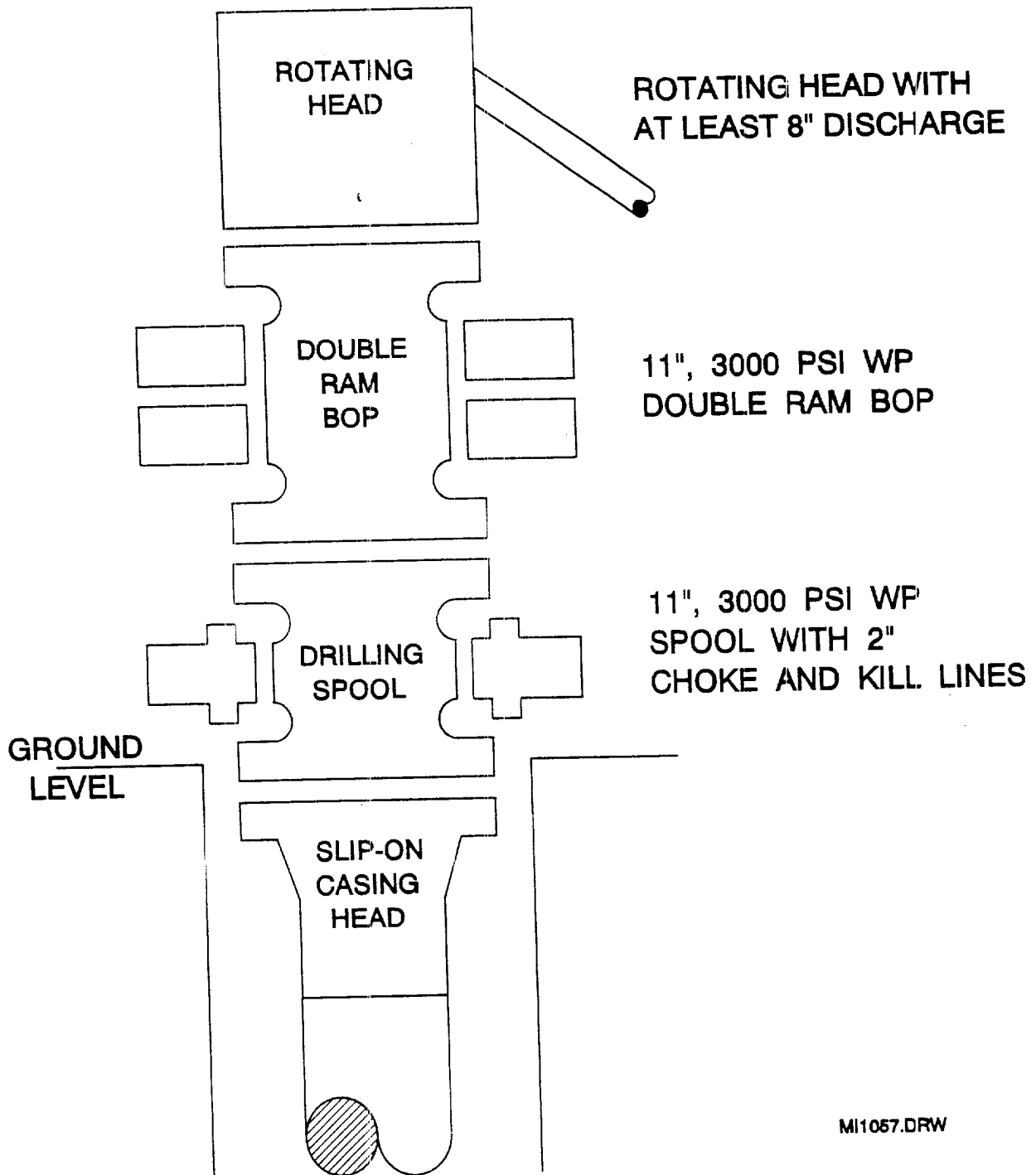
Production

Lead 585 sacks Class C Mixed at 12 ppg
Additives 16% Gel + 2% Salt + 0.3% CD-32 + 0.3% SMS

Tail 700 sacks Class C Mixed at 14.8 ppg
Additives 1.1% FL-62 + 1% BA-58 + 1.5% Salt + 0.3% CD-32
+ 0.2% SMS

Free Water 0 % **Fluid Loss** 30 cc/30 min.

BOP SPECIFICATIONS



MI1057.DRW

The map shows the Hobbs, New Mexico area, with the Gulf of Mexico to the south. Major roads include I-40 and I-25. The map is divided into sections by county lines (Lea County, Eddy County, and Chaves County) and township lines (R 35 E, R 36 E, R 37 E, R 38 E, R 39 E). Key locations marked include Hobbs, Lea County, and the Gulf of Mexico. A large arrow points to the location of Warren Unit No. 144, which is situated near the intersection of I-40 and I-25, south of Hobbs. The map also shows various landmarks such as windmills, oil fields, and pump stations. The map is labeled with various numbers and letters, including 3798, 3765, 3665, 3559, 3585, 3576, 3569, 3580, 3503, 3501, 3500, 3493, 3400, 3385, 3386, 3379, 3378, 3377, 3376, 3375, 3374, 3373, 3372, 3371, 3370, 3369, 3368, 3367, 3366, 3365, 3364, 3363, 3362, 3361, 3360, 3359, 3358, 3357, 3356, 3355, 3354, 3353, 3352, 3351, 3350, 3349, 3348, 3347, 3346, 3345, 3344, 3343, 3342, 3341, 3340, 3339, 3338, 3337, 3336, 3335, 3334, 3333, 3332, 3331, 3330, 3329, 3328, 3327, 3326, 3325, 3324, 3323, 3322, 3321, 3320, 3319, 3318, 3317, 3316, 3315, 3314, 3313, 3312, 3311, 3310, 3309, 3308, 3307, 3306, 3305, 3304, 3303, 3302, 3301, 3300, 3299, 3298, 3297, 3296, 3295, 3294, 3293, 3292, 3291, 3290, 3289, 3288, 3287, 3286, 3285, 3284, 3283, 3282, 3281, 3280, 3279, 3278, 3277, 3276, 3275, 3274, 3273, 3272, 3271, 3270, 3269, 3268, 3267, 3266, 3265, 3264, 3263, 3262, 3261, 3260, 3259, 3258, 3257, 3256, 3255, 3254, 3253, 3252, 3251, 3250, 3249, 3248, 3247, 3246, 3245, 3244, 3243, 3242, 3241, 3240, 3239, 3238, 3237, 3236, 3235, 3234, 3233, 3232, 3231, 3230, 3229, 3228, 3227, 3226, 3225, 3224, 3223, 3222, 3221, 3220, 3219, 3218, 3217, 3216, 3215, 3214, 3213, 3212, 3211, 3210, 3209, 3208, 3207, 3206, 3205, 3204, 3203, 3202, 3201, 3200, 3199, 3198, 3197, 3196, 3195, 3194, 3193, 3192, 3191, 3190, 3189, 3188, 3187, 3186, 3185, 3184, 3183, 3182, 3181, 3180, 3179, 3178, 3177, 3176, 3175, 3174, 3173, 3172, 3171, 3170, 3169, 3168, 3167, 3166, 3165, 3164, 3163, 3162, 3161, 3160, 3159, 3158, 3157, 3156, 3155, 3154, 3153, 3152, 3151, 3150, 3149, 3148, 3147, 3146, 3145, 3144, 3143, 3142, 3141, 3140, 3139, 3138, 3137, 3136, 3135, 3134, 3133, 3132, 3131, 3130, 3129, 3128, 3127, 3126, 3125, 3124, 3123, 3122, 3121, 3120, 3119, 3118, 3117, 3116, 3115, 3114, 3113, 3112, 3111, 3110, 3109, 3108, 3107, 3106, 3105, 3104, 3103, 3102, 3101, 3100, 3099, 3098, 3097, 3096, 3095, 3094, 3093, 3092, 3091, 3090, 3089, 3088, 3087, 3086, 3085, 3084, 3083, 3082, 3081, 3080, 3079, 3078, 3077, 3076, 3075, 3074, 3073, 3072, 3071, 3070, 3069, 3068, 3067, 3066, 3065, 3064, 3063, 3062, 3061, 3060, 3059, 3058, 3057, 3056, 3055, 3054, 3053, 3052, 3051, 3050, 3049, 3048, 3047, 3046, 3045, 3044, 3043, 3042, 3041, 3040, 3039, 3038, 3037, 3036, 3035, 3034, 3033, 3032, 3031, 3030, 3029, 3028, 3027, 3026, 3025, 3024, 3023, 3022, 3021, 3020, 3019, 3018, 3017, 3016, 3015, 3014, 3013, 3012, 3011, 3010, 3009, 3008, 3007, 3006, 3005, 3004, 3003, 3002, 3001, 3000, 2999, 2998, 2997, 2996, 2995, 2994, 2993, 2992, 2991, 2990, 2989, 2988, 2987, 2986, 2985, 2984, 2983, 2982, 2981, 2980, 2979, 2978, 2977, 2976, 2975, 2974, 2973, 2972, 2971, 2970, 2969, 2968, 2967, 2966, 2965, 2964, 2963, 2962, 2961, 2960, 2959, 2958, 2957, 2956, 2955, 2954, 2953, 2952, 2951, 2950, 2949, 2948, 2947, 2946, 2945, 2944, 2943, 2942, 2941, 2940, 2939, 2938, 2937, 2936, 2935, 2934, 2933, 2932, 2931, 2930, 2929, 2928, 2927, 2926, 2925, 2924, 2923, 2922, 2921, 2920, 2919, 2918, 2917, 2916, 2915, 2914, 2913, 2912, 2911, 2910, 2909, 2908, 2907, 2906, 2905, 2904, 2903, 2902, 2901, 2900, 2899, 2898, 2897, 2896, 2895, 2894, 2893, 2892, 2891, 2890, 2889, 2888, 2887, 2886, 2885, 2884, 2883, 2882, 2881, 2880, 2879, 2878, 2877, 2876, 2875, 2874, 2873, 2872, 2871, 2870, 2869, 2868, 2867, 2866, 2865, 2864, 2863, 2862, 2861, 2860, 2859, 2858, 2857, 2856, 2855, 2854, 2853, 2852, 2851, 2850, 2849, 2848, 2847, 2846, 2845, 2844, 2843, 2842, 2841, 2840, 2839, 2838, 2837, 2836, 2835, 2834, 2833, 2832, 2831, 2830, 2829, 2828, 2827, 2826, 2825, 2824, 2823, 2822, 2821, 2820, 2819, 2818, 2817, 2816, 2815, 2814, 2813, 2812, 2811, 2810, 2809, 2808, 2807, 2806, 2805, 2804, 2803, 2802, 2801, 2800, 2799, 2798, 2797, 2796, 2795, 2794, 2793, 2792, 2791, 2790, 2789, 2788, 2787, 2786, 2785, 2784, 2783, 2782, 2781, 2780, 2779, 2778, 2777, 2776, 2775, 2774, 2773, 2772, 2771, 2770, 2769, 2768, 2767, 2766, 2765, 2764, 2763, 2762, 2761, 2760, 2759, 2758,

WTC 44820

SEC. 25 TWP. 20-S RGE. 38-E

SURVEY N.M.P.M

COUNTY _____ LEA _____ STATE _____ NM _____

DESCRIPTION 660' FNL & 1980' FWL

ELEVATION 3568'

OPERATOR CONOCO INC.

LEASE WARREN UNIT NO. 144

WEST TEXAS CONSULTANTS, INC.

ENGINEERS-PLANNERS-SURVEYORS

MIDLAND, TEXAS

EXHIBIT A