

DISTRICT I
P.O. Box 1988, Hobbs, NM 88241-1988

State of New Mexico
Energy, Minerals and Natural Resources Dept. and

Form C-102
Revised February 10, 1994
Submit to Appropriate District Office
State Lease - 4 Copies
Fee Lease - 3 Copies

DISTRICT II
P.O. Drawer DD, Artesia, NM 88211-0719

DISTRICT III
1000 Rio Brazos Rd., Aztec, NM 87410

OIL CONSERVATION DIVISION

P.O. Box 2088
Santa Fe, New Mexico 87504-2088

DISTRICT IV
P.O. Box 2088, Santa Fe, NM 87504-2088

☐ AMENDED REPORT

WELL LOCATION AND ACREAGE DEDICATION PLAT

API Number 30-025-34080	Pool Code 15200	Pool Name TUBB
Property Code 21138	Property Name JERRY STATE	Well Number 1
OGRID No. 25482	Operator Name XERIC OIL & GAS CORPORATION	Elevation 3568

Surface Location

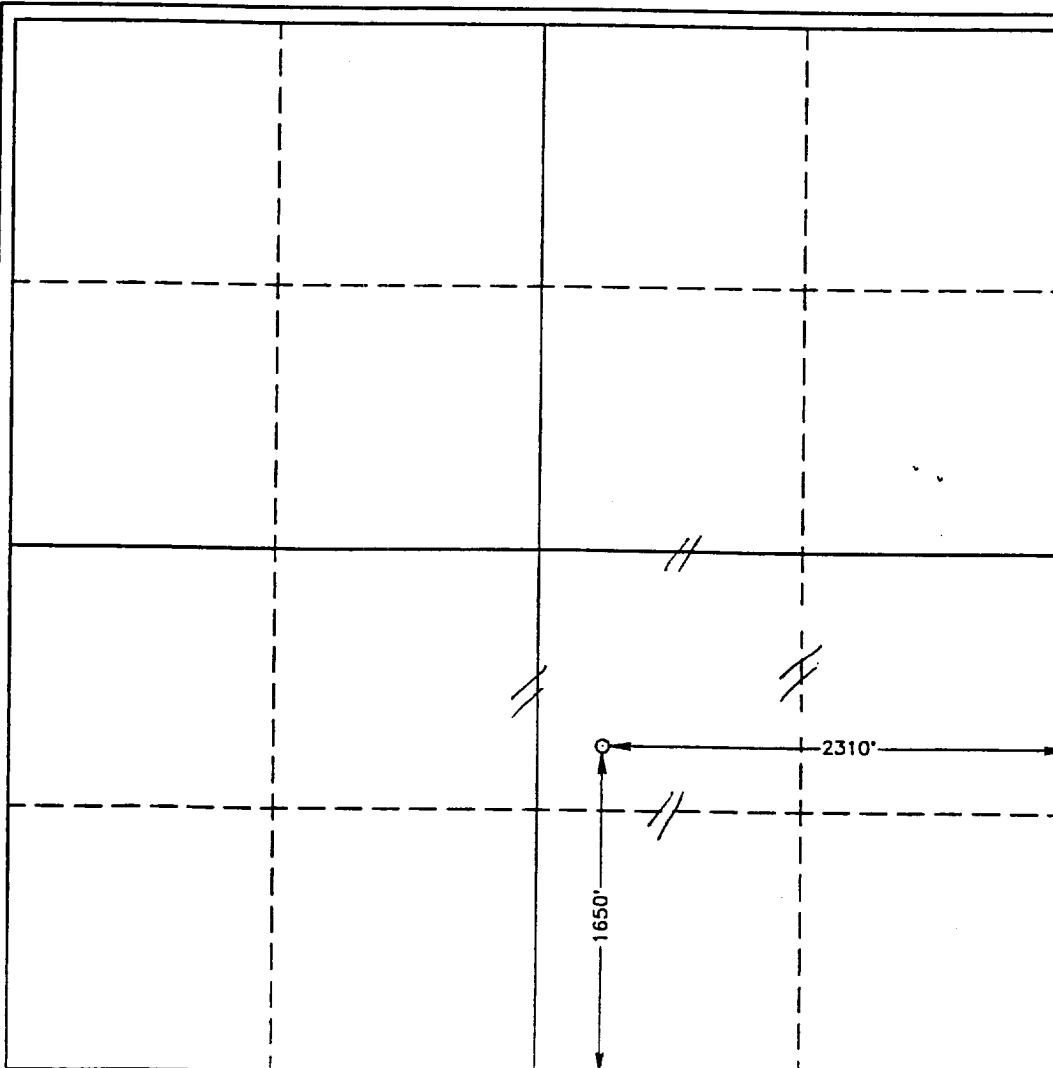
UL or lot No. J	Section 36	Township 20 S	Range 38 E	Lot Idn	Feet from the 1650	North/South line SOUTH	Feet from the 2310	East/West line EAST	County LEA
--------------------	---------------	------------------	---------------	---------	-----------------------	---------------------------	-----------------------	------------------------	---------------

Bottom Hole Location If Different From Surface

UL or lot No.	Section	Township	Range	Lot Idn	Feet from the	North/South line	Feet from the	East/West line	County
---------------	---------	----------	-------	---------	---------------	------------------	---------------	----------------	--------

Dedicated Acres 40	Joint or Infill I	Consolidation Code	Order No.
-----------------------	----------------------	--------------------	-----------

NO ALLOWABLE WILL BE ASSIGNED TO THIS COMPLETION UNTIL ALL INTERESTS HAVE BEEN CONSOLIDATED
OR A NON-STANDARD UNIT HAS BEEN APPROVED BY THE DIVISION



OPERATOR CERTIFICATION

I hereby certify the the information
contained herein is true and complete to the
best of my knowledge and belief.

Michael G. Mooney
Signature

Michael G. Mooney
Printed Name

Consulting Engineer
Title

7/29/97
Date

SURVEYOR CERTIFICATION

I hereby certify that the well location shown
on this plat was plotted from field notes of
actual surveys made by me or under my
supervision, and that the same is true and
correct to the best of my belief.

JULY 16, 1997

Date Surveyed JLP

Signature & Seal of
Professional Surveyor

John W. West
JOHN W. WEST
NEW MEXICO
7-18-97
P.O. Num 97-161197

Certified by JOHN W. WEST, 676
JOHN W. WEST, 3239
JOHN W. WEST, 12641