

DISTRICT I  
P.O. Box 1980, Hobbs, NM 88241-1980

State of New Mexico  
Energy, Minerals and Natural Resources Department

Form C-102  
Revised February 10, 1994  
Submit to Appropriate District Office  
State Lease - 4 Copies  
Fee Lease - 3 Copies

DISTRICT II  
P.O. Drawer DD, Artesia, NM 88211-0719

DISTRICT III  
1000 Rio Brazos Ed., Aztec, NM 87410

OIL CONSERVATION DIVISION

P.O. Box 2088  
Santa Fe, New Mexico 87504-2088

☐ AMENDED REPORT

DISTRICT IV  
P.O. Box 2088, Santa Fe, NM 87504-2088

WELL LOCATION AND ACREAGE DEDICATION PLAT

API Number <b>30-025-34175</b>	Pool Code <b>96432</b>	Pool Name <b>East Bilberry Delaware</b>
Property Code <b>21749</b>	Property Name <b>FLINT "6" STATE</b>	Well Number <b>1</b>
OGRID No. <b>17891</b>	Operator Name <b>POGO PRODUCING COMPANY</b>	Elevation <b>3640</b>

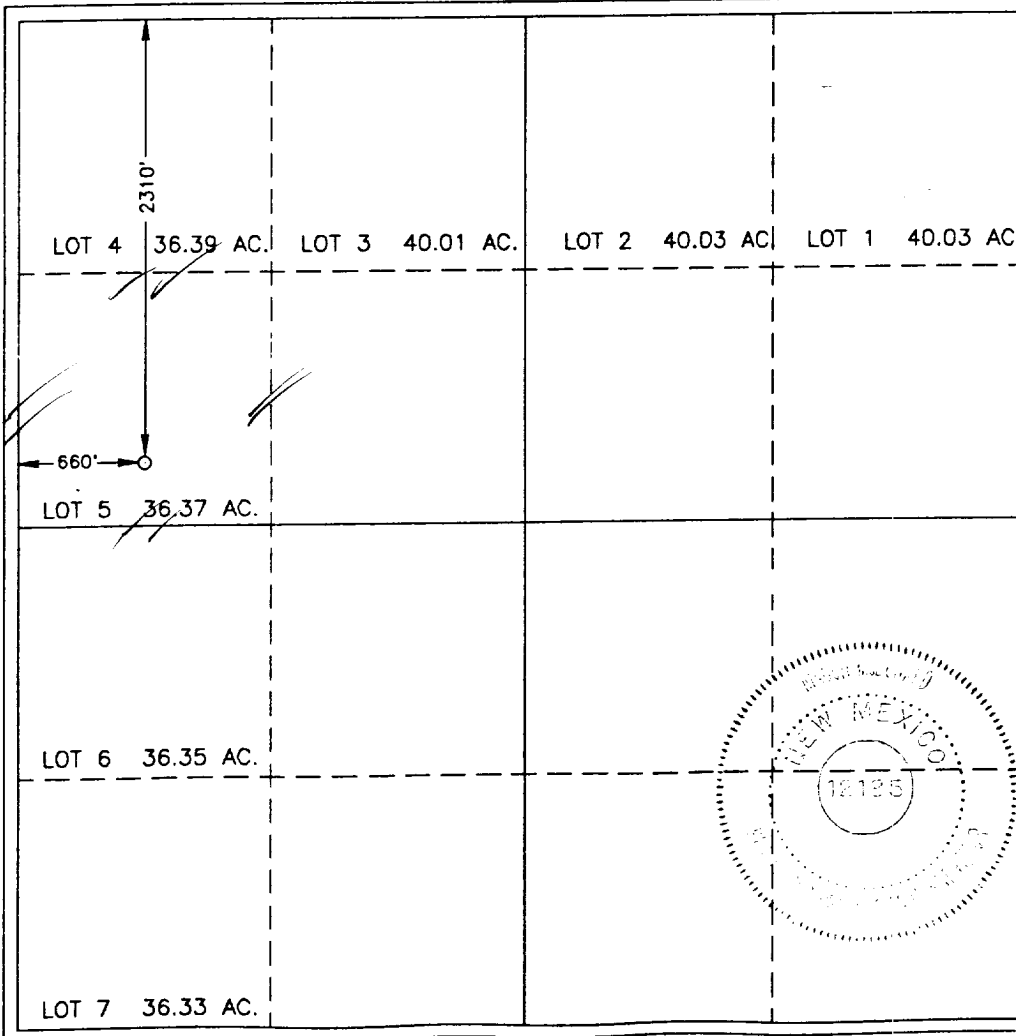
Surface Location

UL or lot No.	Section	Township	Range	Lot Idn	Feet from the	North/South line	Feet from the	East/West line	County
5	6	22 S	33 E		2310	NORTH	660	WEST	LEA

Bottom Hole Location If Different From Surface

UL or lot No.	Section	Township	Range	Lot Idn	Feet from the	North/South line	Feet from the	East/West line	County
Dedicated Acres <b>40</b>		Joint or Infill	Consolidation Code	Order No.					

NO ALLOWABLE WILL BE ASSIGNED TO THIS COMPLETION UNTIL ALL INTERESTS HAVE BEEN CONSOLIDATED  
OR A NON-STANDARD UNIT HAS BEEN APPROVED BY THE DIVISION



<b>OPERATOR CERTIFICATION</b>	
I hereby certify the the information contained herein is true and complete to the best of my knowledge and belief.	
Signature <i>James M.C. Ritchie, Jr.</i>	
Printed Name <b>JAMES M.C. Ritchie, Jr.</b>	
Title <b>AGENT</b>	
Date <b>10/16/97</b>	
<b>SURVEYOR CERTIFICATION</b>	
I hereby certify that the well location shown on this plat was plotted from field notes of actual surveys made by me or under my supervision, and that the same is true and correct to the best of my belief.	
OCTOBER 15, 1997	
Date Surveyed	JLP
Signature & Seal of Professional Surveyor <i>W.O. Num. 97-11-1685</i>	
W.O. Num. 97-11-1685	
Certificate No.	RONALD J. EIDSON, 3239 GARY G. EIDSON, 12641 MACON McDONALD, 12185

