

DISTRICT I
P.O. Box 1980, Hobbs, NM 88241-1980

DISTRICT II
P.O. Drawer DD, Artesia, NM 88211-0719

DISTRICT III
1000 Rio Brazos Rd., Aztec, NM 87410

DISTRICT IV
P.O. BOX 2088, SANTA FE, N.M. 87504-2088

State of New Mexico
Energy, Minerals and Natural Resources Department

Form C-102
Revised February 10, 1994
Submit to Appropriate District Office
State Lease - 4 Copies
Fee Lease - 3 Copies

OIL CONSERVATION DIVISION

P.O. Box 2088
Santa Fe, New Mexico 87504-2088

☐ AMENDED REPORT

WELL LOCATION AND ACREAGE DEDICATION PLAT

API Number 30-025-34203	Pool Code 96764	Pool Name SOUTHEAST MONUMENT ABO
Property Code 6398	Property Name HANSEN STATE	Well Number 8
OGRID No. 14021	Operator Name MARATHON OIL COMPANY	Elevation 3354

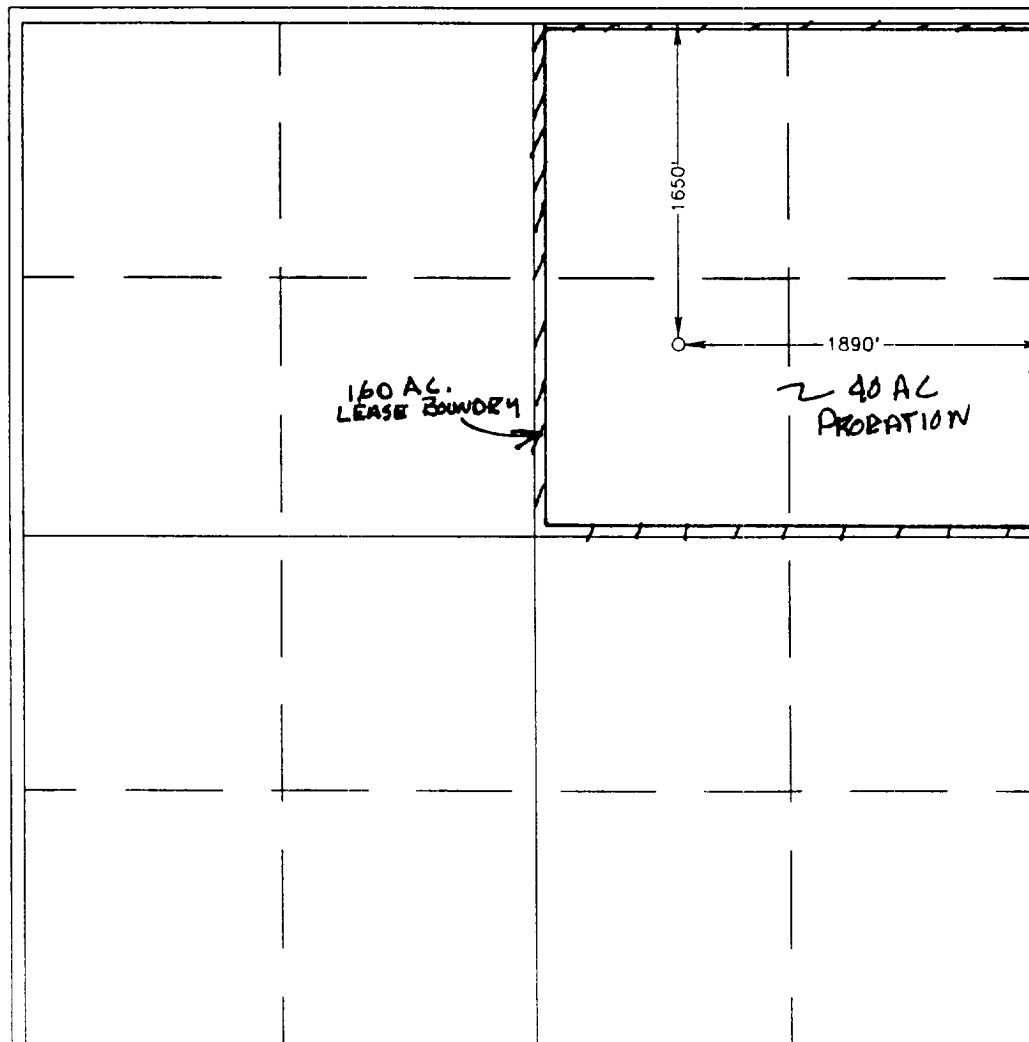
Surface Location

UL or lot No. G	Section 16	Township 20 S	Range 37 E	Lot Idn	Feet from the 1650	North/South line NORTH	Feet from the 1890	East/West line EAST	County LEA
---------------------------	----------------------	-------------------------	----------------------	---------	------------------------------	----------------------------------	------------------------------	-------------------------------	----------------------

Bottom Hole Location If Different From Surface

UL or lot No.	Section	Township	Range	Lot Idn	Feet from the	North/South line	Feet from the	East/West line	County
Dedicated Acres 40 SW/NE	Joint or Infill	Consolidation Code	Order No. R-10909						

NO ALLOWABLE WILL BE ASSIGNED TO THIS COMPLETION UNTIL ALL INTERESTS HAVE BEEN CONSOLIDATED
OR A NON-STANDARD UNIT HAS BEEN APPROVED BY THE DIVISION



OPERATOR CERTIFICATION

I hereby certify the the information
contained herein is true and complete to the
best of my knowledge and belief.

Walter J. Nordt
Signature

D. P. NORDT

Printed Name

DRILLING SUPERINTENDENT

Title

NOVEMBER 13, 1997

Date

SURVEYOR CERTIFICATION

I hereby certify that the well location shown
on this plat was plotted from field notes of
actual surveys made by me or under my
supervision, and that the same is true and
correct to the best of my belief.

OCTOBER 28, 1997

Date Surveyed DMCC

Signature & Seal of
Professional Surveyor

Ronald J. Eidson
10-29-97
1747

Certificate No. JOHN W. WEST 676
RONALD J. EIDSON 3239
DARY EIDSON 12641