

District I
P. O. Box 1980, Hobbs, NM 88241-1980
District II
P. O. Drawer DD, Artesia, NM 88211-0719
District III
1000 Rio Brazos Rd., Aztec, NM 87410
District IV
P. O. Box 2088, Santa Fe, NM 87504-2088

State of New Mexico
Energy, Minerals & Natural Resources Department

OIL CONSERVATION DIVISION
P. O. Box 2088
Santa Fe, NM 87504-2088

Form C-101
Revised February 10, 1994
Instructions on back
Submit to Appropriate District Office
State Lease - 6 Copies
Fee Lease - 5 Copies

AMENDED REPORT

APPLICATION FOR PERMIT TO DRILL, RE-ENTER, DEEPEN, PLUGBACK, OR ADD A ZONE

¹ Operator Name and Address. MW Petroleum Corporation 2000 Post Oak Blvd., Suite 100 Houston, Texas 77056-4400		² OGRID Number 15422
Dave Talbott (713) 296-7121		³ API Number 30-025-34211
⁴ Property Code 22110	⁵ Property Name Joe Camel	⁶ Well No. 2

⁷ Surface Location

UL or lot no.	Section	Township	Range	Lot Idn	Feet from the	North/South Line	Feet from the	East/West line	County
F	13	20S	38E		2080	North	1650	West	Lea

⁸ Proposed Bottom Hole Location If Different From Surface

UL or lot no.	Section	Township	Range	Lot Idn	Feet from the	North/South Line	Feet from the	East/West line	County

⁹ Proposed Pool 1

House Drinkard

¹⁰ Proposed Pool 2

House Blinebry, South

¹¹ Work Type Code N	¹² Well Type Code O	¹³ Cable/Rotary R	¹⁴ Lease Type Code P	¹⁵ Ground Level Elevation 3553
¹⁶ Multiple	¹⁷ Proposed Depth 6900'	¹⁸ Formation Drinkard/Blinebry	¹⁹ Contractor	²⁰ Spud Date ASAP

²¹ Proposed Casing and Cement Program

Hole size	Casing Size	Casing weight/foot	Setting Depth	Sacks of Cement	Estimated TOC
11"	8 5/8"	24# K-55 STC	1625'	520 sks Prem +	circulate
7 7/8"	5 1/2"	17# K-55 LTC	6900'	559 sks hal Lite	"
				+ 314 sks poz prem.	

²² Describe the proposed program. If this application is to DEEPEN or PLUG BACK give the data on the present productive zone and proposed new productive zone. Describe the blowout prevention program, if any. Use additional sheets if necessary.

Propose to drill 11" hole to 1625', run and set 1625' of 8 5/8" 24# K-55 STC casing. Cement with 520 sks Premium Plus. Circulate cement to surface.

Drill 7 7/8" hole to 6900', run and set 6900' of 5 1/2" 17# K-55 LTC casing. Cement with 559 sks Halliburton Light Premium + 5% salt + 1/4# sks Cellephane. Tail in with 314 sks 50/50 Poz Premium + 2% sel + 5% salt. Circulate to Surface.

Permit Expires 1 Year From Approval
Date Unless Drilling Underway

Blow Out Prevention: See attached copy

²³ I hereby certify that the information given above is true and complete to the best of my knowledge and belief.

Signature: *Michael R. Burch*

Printed name: Michael R. Burch, CPL

Title: Agent for MW Petroleum Corporation

Date: 11-24-97

Phone: 505-746-1070

OIL CONSERVATION DIVISION

Approved by: ORIGINAL SIGNED BY CHRIS WILLIAMS
DISTRICT I SUPERVISOR

Title:

Approval Date: NOV 25 1997

Expiration Date:

Conditions of Approval:
Attached

5

DISTRICT I
P.O. Box 1990, Hobbs, NM 88241-1990

State of New Mexico
Energy, Minerals and Natural Resources Department

Form C-102
Revised February 10, 1994
Submit to Appropriate District Office
State Lease - 4 Copies
Fee Lease - 2 Copies

DISTRICT II
P.O. Drawer DD, Artesia, NM 88211-0719

OIL CONSERVATION DIVISION
P.O. Box 2088
Santa Fe, New Mexico 87504-2088

DISTRICT III
1000 Rio Brazos Rd., Aztec, NM 87410

DISTRICT IV
P.O. Box 2068, Santa Fe, NM 87504-2068

AMENDED REPORT

WELL LOCATION AND ACREAGE DEDICATION PLAT

API Number 30-025-34211	Pool Code 33250	Pool Name House Drinkard/House Blinebry, South
Property Code 22110	Property Name JOE CAMEL	Well Number 2
OGED No. 15422	Operator Name MW Petroleum CORPORATION	Elevation 3553

Surface Location

UL or lot No.	Section	Township	Range	Lot Idn	Feet from the	North/South line	Feet from the	East/West line	County
F	13	20 S	38 E		2080	NORTH	1650	WEST	LEA

Bottom Hole Location If Different From Surface

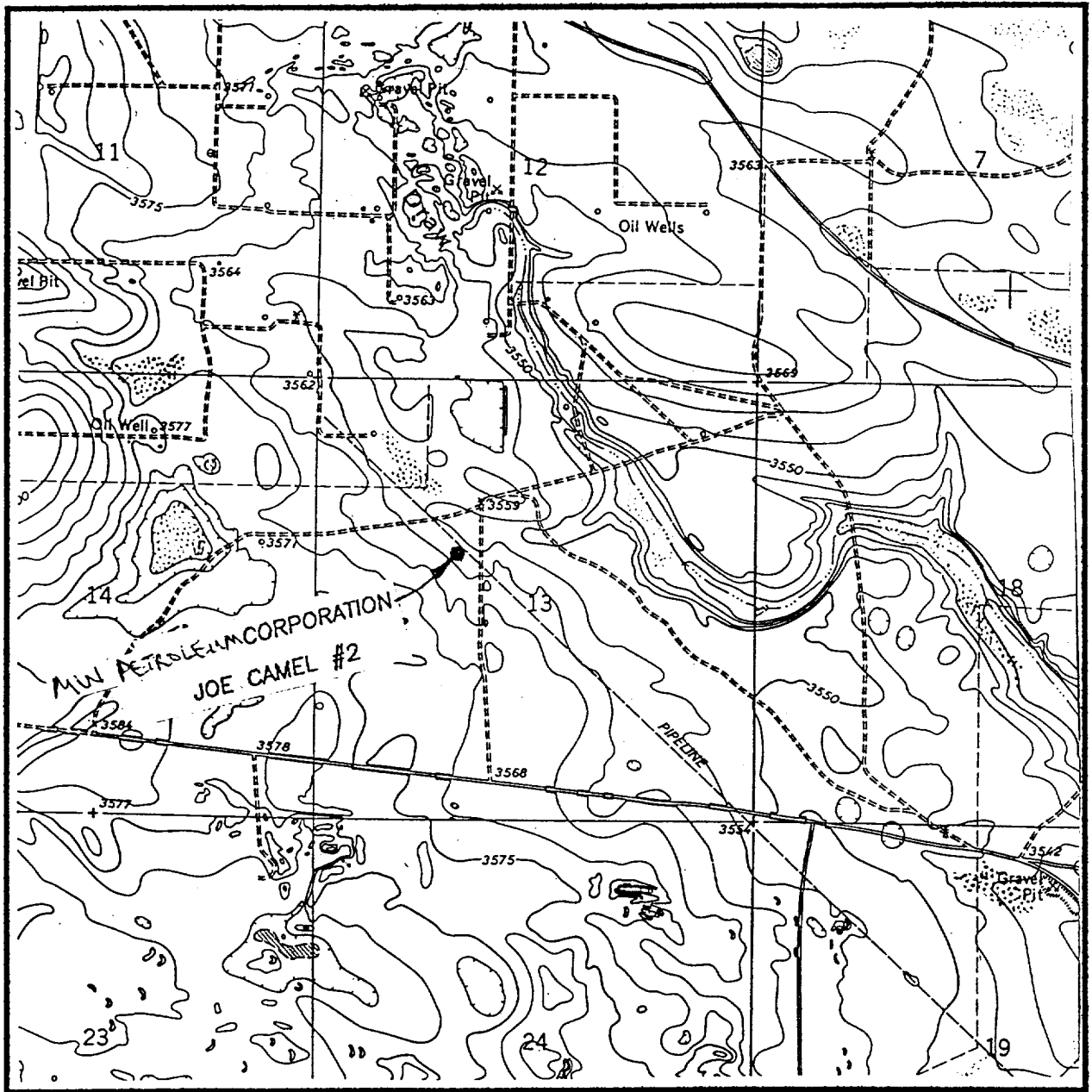
UL or lot No.	Section	Township	Range	Lot Idn	Feet from the	North/South line	Feet from the	East/West line	County

Dedicated Acres	Joint or Infill	Consolidation Code	Order No.
40			

NO ALLOWABLE WILL BE ASSIGNED TO THIS COMPLETION UNTIL ALL INTERESTS HAVE BEEN CONSOLIDATED OR A NON-STANDARD UNIT HAS BEEN APPROVED BY THE DIVISION

	<p>OPERATOR CERTIFICATION</p> <p>I hereby certify that the information contained herein is true and complete to the best of my knowledge and belief.</p> <p><i>Michael R. Burch</i> Signature</p> <p>Michael R. Burch, CPL Printed Name Agent for MW Petroleum Corporation</p> <p>Title 11-24-97 Date</p>
	<p>SURVEYOR CERTIFICATION</p> <p>I hereby certify that the well location shown on this plat was plotted from field notes of actual surveys made by me or under my supervision, and that the same is true and correct to the best of my belief.</p> <p>NOVEMBER 19, 1997</p> <p>Date Surveyed JLP</p> <p>Signature & Seal of Professional Surveyor</p> <p><i>Ronald J. Eidson</i> 11-20-97 W.O. Num. 97-11-1924</p>
	<p>Certificate No. RONALD J. EIDSON, 3239 GARY G. EIDSON, 12841 MAGSON McDONALD, 12185</p>

LOCATION VERIFICATION MAP



SCALE: 1" = 2000'

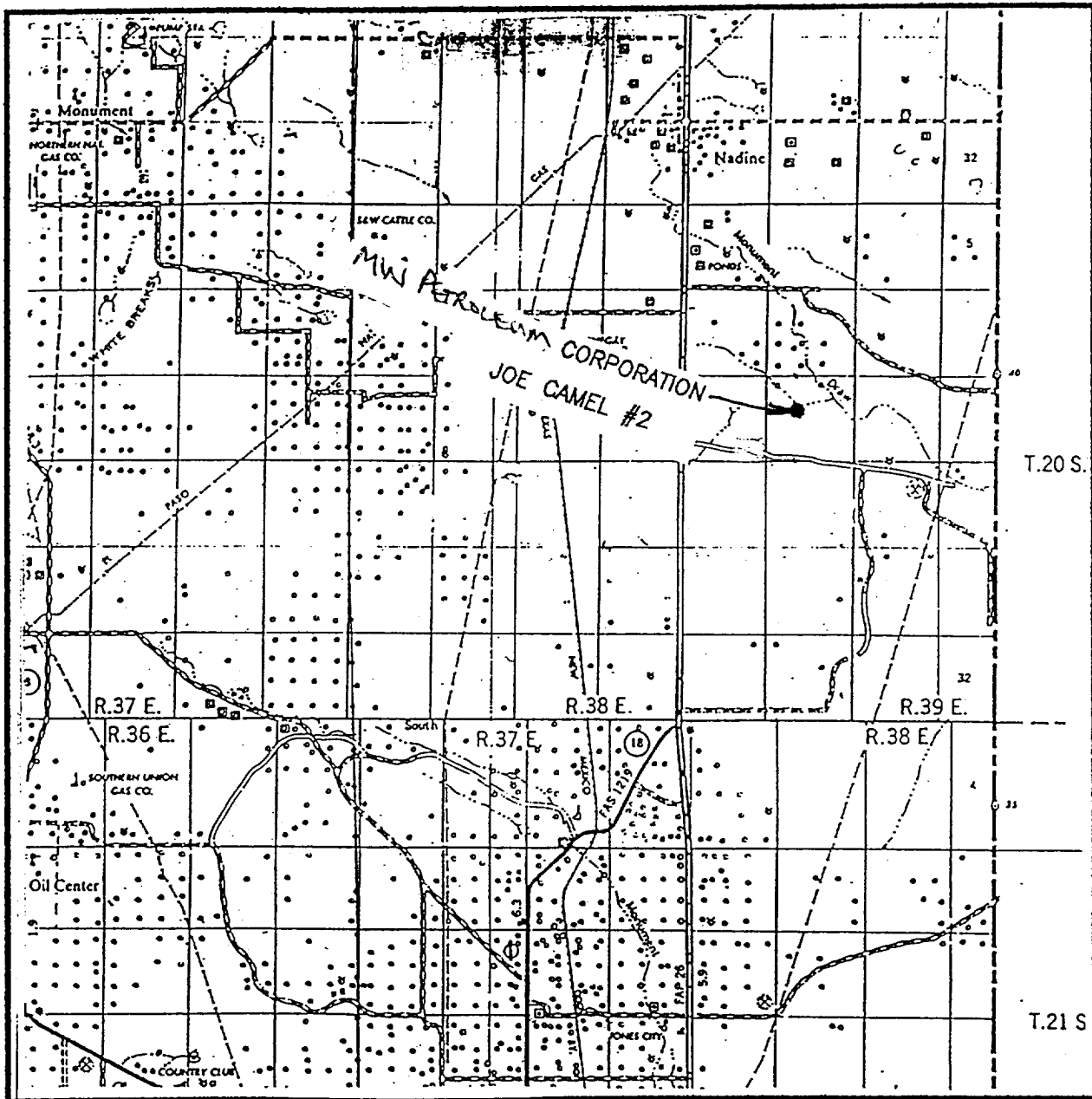
CONTOUR INTERVAL - 5'

SEC. 13 TWP. 20-S RGE. 38-E
 SURVEY N.M.P.M.
 COUNTY LEA
 DESCRIPTION 2080' FNL & 1650' FWL
 ELEVATION 3553'
 OPERATOR MUN PETROLEUM CORPORATION
 LEASE JOE CAMEL

JOHN WEST ENGINEERING
HOBBS, NEW MEXICO
 (505) 393-3117

U.S.G.S. TOPOGRAPHIC MAP
 HOBBS SE, TEX.-N.M.

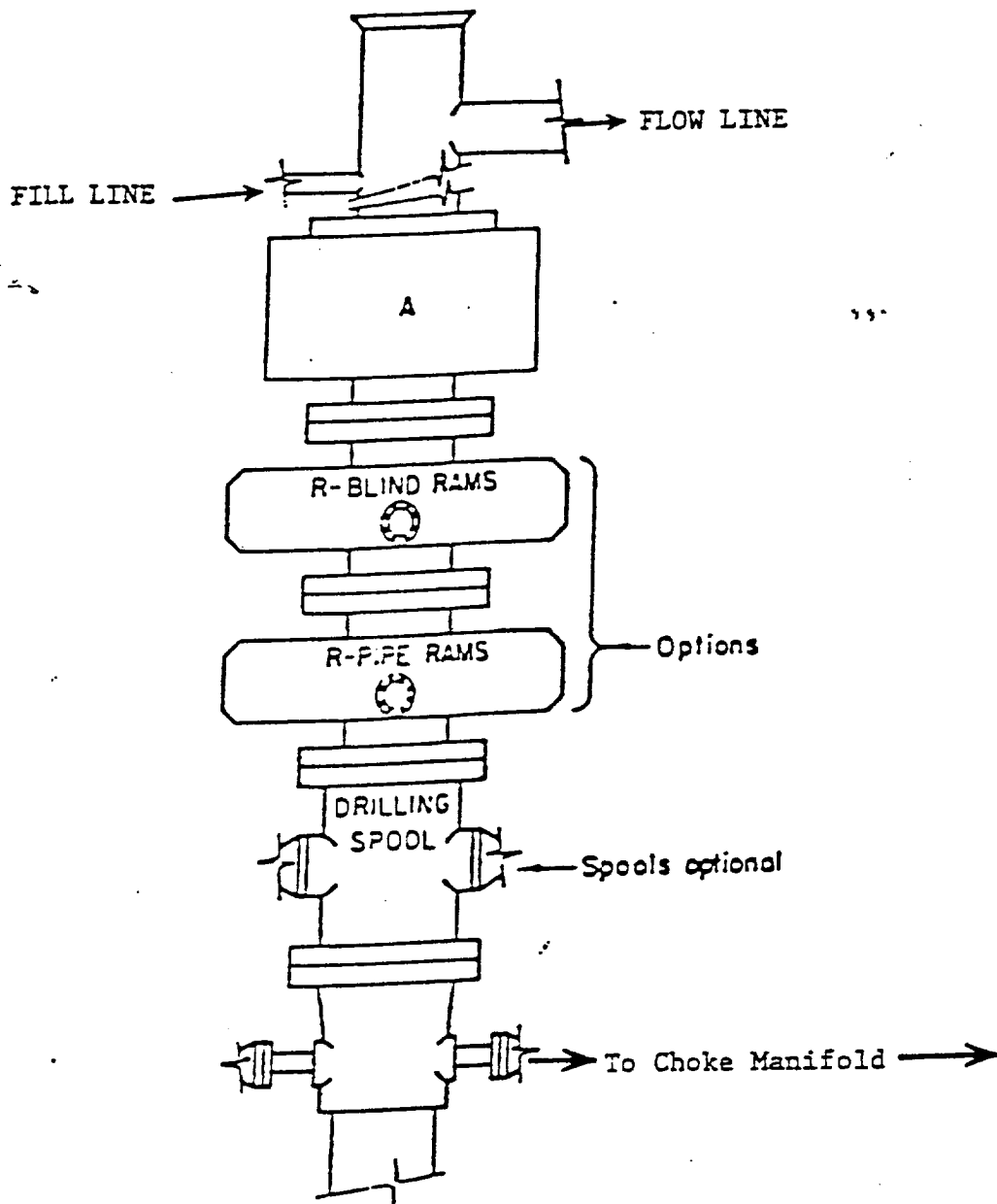
VICINITY MAP



SCALE: 1" = 2 MILES

SEC. 13 TWP. 20-S RGE. 38-E
 SURVEY N.M.P.M.
 COUNTY LEA
 DESCRIPTION 2080' FNL & 1650' FWL
 ELEVATION 3553'
 OPERATOR M.W. PETROLEUM CORPORATION
 LEASE JOE CAMEL

JOHN WEST ENGINEERING
HOBBS, NEW MEXICO
 (505) 393-3117



ARRANGEMENT SRRA

900 Series
3000 PSI WP

2/23/98

EM

Received
Hobbs
000