

District I
PO Box 1960, Hobbs, NM 88241-1960
District II
PO Drawer DD, Artesia, NM 88211-0719
District III
1000 Rio Brazos Rd., Aztec, NM 87410
District IV
PO Box 2088, Santa Fe, NM 87504-2088

State of New Mexico
Energy, Minerals & Natural Resources Department

OIL CONSERVATION DIVISION
PO Box 2088
Santa Fe, NM 87504-2088

Form C-101
Revised February 10, 1994
Instructions on back
Submit to Appropriate District Office
State Lease - 6 Copies
Fee Lease - 5 Copies

☐ AMENDED REPORT

APPLICATION FOR PERMIT TO DRILL, RE-ENTER, DEEPEN, PLUGBACK, OR ADD A ZONE

Operator Name and Address: Collins & Ware, Inc. 508 West Wall, Suite 1200 Midland, Texas 79701		OGRID Number 004874
		API Number 30-025-34244
Property Code 19159	Property Name Hare, JG	Well No. 9

Surface Location

UL or lot no.	Section	Township	Range	Lot Ida	Foot from the	North/South line	Foot from the	East/West line	County
K	33	21S	37E		1980	South	1841	West	Lea

Proposed Bottom Hole Location If Different From Surface

UL or lot no.	Section	Township	Range	Lot Ida	Foot from the	North/South line	Foot from the	East/West line	County
Proposed Pool 1 Penrose Skelly Grayburg (50350)					Proposed Pool 2				

Work Type Code N	Well Type Code O	Cable/Rotary R	Lease Type Code P	Ground Level Elevation 3445
Multiple No	Proposed Depth 4500	Formation Grayburg	Contractor	Spud Date January 1998

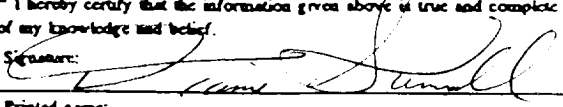
Proposed Casing and Cement Program

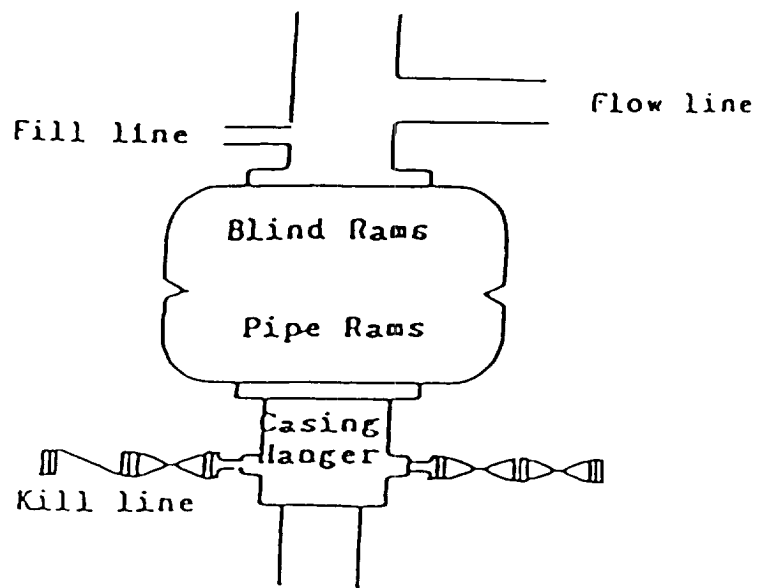
Hole Size	Casing Size	Casing weight/foot	Setting Depth	Sacks of Cement	Estimated TOC
12 1/4	8 5/8	24#	325'	300 sx	Circulate
7 7/8	5 1/2	15.5#	4500'	750 sx	Circulate

Describe the proposed program. If this application is to DEEPEN or PLUG BACK give the data on the present productive zone and proposed new productive zone. Describe the blowout prevention program, if any. Use additional sheets if necessary.

1. Build location and reserve pits.
2. Move in and rig up rotary tools.
3. Spud 12 1/4" hole and drill to approx. 325', case and cement surface string.
4. Continue drilling to approx. 4500', test for commercial quantities of reserves.
5. Evaluate test results for (A. or B.)
A. Completion - case and cement long string and complete well.
B. Plug and abandon according to NMOC rules and regulations.

Permit Expires 1 Year from Date of Issuance
Data Unifies Drilling Guidelines

I hereby certify that the information given above is true and complete to the best of my knowledge and belief. Signature:  Printed name: Dianne Sumrall Title: Production Supervisor Date: 12/17/97 Phone: (915)687-3435		OIL CONSERVATION DIVISION Approved by: ORIGINAL SIGNED BY CHRIS WILLIAMS Title: DISTRICT I SUPERVISOR Approval Date: DEC 28 1997 Expiration Date: Conditions of Approval Attached <input type="checkbox"/>	
--	--	--	--



Blowout Preventer
3000 psi working pressure

District I
PO Box 1980, Hobbs, NM 88241-1980

District II
PO Drawer DD, Artesic, NM 88211-0719

District III
1000 Rio Brasos Rd., Aztec, NM 87410

District IV
PO Box 2088, Santa Fe, NM 87504-2088

State of New Mexico
Energy, Minerals & Natural Resources Department

Form C-102
Revised February 10, 1994
Submit to Appropriate District Office
State Lease - 4 Copies
Fee Lease - 3 Copies

OIL CONSERVATION DIVISION

PO Box 2088
Santa Fe, NM 87504-2088

☐ AMENDED REPORT

WELL LOCATION AND ACREAGE DEDICATION PLAT

1 API Number <u>30-020-34244</u>	2 Pool Code <u>50350</u>	3 Pool Name <u>Penrose Skelly Grayburg</u>
4 Property Code <u>19159</u>	5 Property Name <u>J. G. Hare</u>	6 Well Number <u>9</u>
7 OGRID No. <u>004874</u>	8 Operator Name <u>Collins & Ware, Inc.</u>	9 Elevation <u>3445</u>

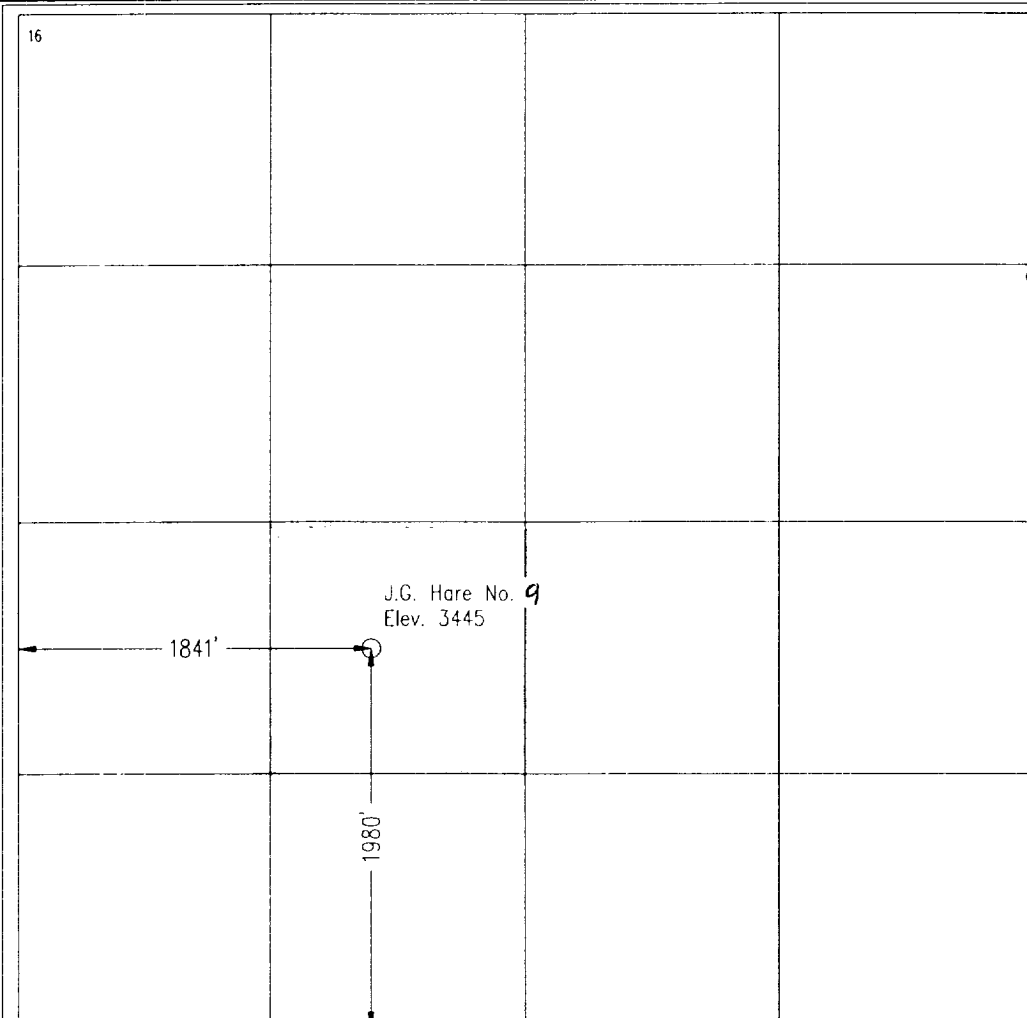
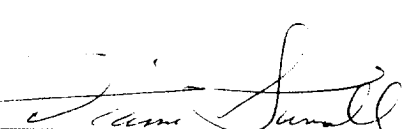
¹⁰ Surface Location

UL or lot no. <u>K</u>	Section <u>33</u>	Township <u>21 S</u>	Range <u>37 E</u>	Lot Idn	Feet from the <u>1980</u>	North/South line <u>South</u>	Feet from the <u>1841</u>	East/West line <u>West</u>	County <u>Lea</u>
---------------------------	----------------------	-------------------------	----------------------	---------	------------------------------	----------------------------------	------------------------------	-------------------------------	----------------------

¹¹ Bottom Hole Location If Different From Surface

UL or lot no.	Section	Township	Range	Lot Idn	Feet from the	North/South line	Feet from the	East/West line	County
¹² Dedicated Acres <u>40</u>									
¹³ Joint or Infill									
¹⁴ Consolidation Code									
¹⁵ Order No.									

NO ALLOWABLE WILL BE ASSIGNED TO THIS COMPLETION UNTIL ALL INTERESTS HAVE BEEN CONSOLIDATED
OR A NON-STANDARD UNIT HAS BEEN APPROVED BY THE DIVISION

16 	17 OPERATOR CERTIFICATION <i>I hereby certify that the information contained herein is true and complete to the best of my knowledge and belief.</i>  Signature <u>Dianne Sumrall</u> Printed Name <u>Production Supervisor</u> Title <u>December 17, 1997</u> Date

5 0.5 Miles SW of Eunice, New Mexico.

File No. A-1173