

District I
PO Box 1980, Hobbs, NM 88241-1980

District II
PO Drawer DD, Artesia, NM 88211-0719

District III
1000 Rio Brazos Rd., Aztec, NM 87410

District IV
PO Box 2088, Santa Fe, NM 87504-2088

State of New Mexico
Energy, Minerals & Natural Resources Department

OIL CONSERVATION DIVISION
PO Box 2088
Santa Fe, NM 87504-2088

Form C-101
Revised February 10, 1994

Instructions on back
Submit to Appropriate District Office
State Lease - 6 Copies
Fee Lease - 5 Copies

☐ AMENDED REPORT

APPLICATION FOR PERMIT TO DRILL, RE-ENTER, DEEPEN, PLUGBACK, OR ADD A ZONE

Operator Name and Address: Conoco Inc 10 Desta Dr. Ste. 430E Midland, Tx. 79705-4500		O GRID No. 005073
Property Code 13396		API Number 30 - 025 - 34311
Property Name Hardy "36" State		Well No. 26

Surface Location

UL or lot no.	Section	Township	Range	Lot Idn	Feet from the	North/South line	Feet from the	East/West line	County
B	36	20S	37E		870	North	1650	East	Lea

s Proposed Bottom Hole Location If Different From Surface

UL or lot no	Section	Township	Range	Lot Idn	Feet from the	North/South line	Feet from the	East/West line	County
Proposed Pool 1					Proposed Pool 2				
South Cass Strawn									

Work Type Code N	Well Type Code O	Cable/Rotary R	Lease type Code S	14 Ground Level Elevation 3504'
16 Multiple No	17 Proposed Depth 7900'	18 Formation Strawn	19 Contractor Capstar Drlg.	20 Spud Date 3/1/98

21 Proposed Casing and Cement Program

Hole Size	Casing Size	Casing weight/foot	Setting Depth	Sacks of Cement	Estimated TOC
12-1/4"	8-5/8", M-50	23#	1400'	565 sx. circ.	Surface
7-7/8"	5-1/2", K-55	17#	7900'	1510 sx. circ.	Surface

Describe the proposed program. If this application is to DEEPEN or PLUG BACK give the data on the present productive zone and proposed new productive zone. Describe the blowout prevention program, if any. Use additional sheets if necessary.

It is proposed to drill a vertical wellbore through the Strawn formation. The well will be drilled and equipped according to the following additional attachments:

1. Well Location & Acreage Dedication Plat (C-102)
2. Proposed Well Plan Outline
3. Cementing program
4. BOP/Choke diagram

Permit Expires 1 Year From Approval
Date Unless Drilling Underway

23 I hereby certify that the information given above is true and complete to the best of my knowledge and belief. Signature: <i>Jo Ann Johnson</i>		OIL CONSERVATION DIVISION	
Printed name: Jo Ann Johnson		Approved: ORIGINAL SIGNED BY CHRIS WILLIAMS DISTRICT I SUPERVISOR	
Title: Property Analyst		Title:	
Date: 2/20/98	Phone: 915/686-5515	Approval Date:	Expiration Date:
		Conditions of Approval: Attached	

209

2

District I
PO Box 1980, Hobbs, NM 88241-1980
District II
PO Drawer DD, Artesia, NM 88211-0719
District III
1000 Rio Brazos Rd., Aztec, NM 87410
District IV
PO Box 2088, Santa Fe, NM 87504-2088

State of New Mexico
Energy, Minerals & Natural Resources Department

OIL CONSERVATION DIVISION
PO Box 2088
Santa Fe, NM 87504-2088

Form C-102
Revised February 21, 1994
Instructions on back
Submit to Appropriate District Office
State Lease - 4 Copies
Fee Lease - 3 Copies

☐ AMENDED REPORT

WELL LOCATION AND ACREAGE DEDICATION PLAT

*API Number 30-025-34311		*Pool Code 10460	*Pool Name South Cass Strawn
*Property Code 13396	*Property Name HARDY "36" STATE		*Well Number 26
*OGRID No. 005073	*Operator Name CONOCO INC.		*Elevation 3504'

¹⁰Surface Location

UL or lot no.	Section	Township	Range	Lot Idn	Feet from the	North/South line	Feet from the	East/West line	County
B	36	20-S	37-E		870	NORTH	1650	EAST	LEA

¹¹Bottom Hole Location If Different From Surface

UL or lot no.	Section	Township	Range	Lot Idn	Feet from the	North/South line	Feet from the	East/West line	County

*Dedicated Acres 40	*Joint or Infill	*Consolidation Code	*Order No.
------------------------	------------------	---------------------	------------

NO ALLOWABLE WILL BE ASSIGNED TO THIS COMPLETION UNTIL ALL INTERESTS HAVE BEEN CONSOLIDATED
OR A NON-STANDARD UNIT HAS BEEN APPROVED BY THE DIVISION

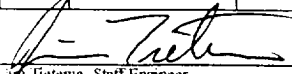
16		17 OPERATOR CERTIFICATION <i>I hereby certify that the information contained herein is true and complete to the best of my knowledge and belief.</i> Signature: <i>Jo Ann Johnson</i> Printed Name: Jo Ann Johnson Title: Property Analyst Date: 2/20/98
		18 SURVEYOR CERTIFICATION <i>I hereby certify that the well location shown on this plat was plotted from field notes of actual surveys made by me or under my supervision, and that the same is true and correct to best of my belief.</i> Date of Survey: FEBRUARY 9, 1998 Signature and Seal of Professional Surveyor: Certificate Number: 8278

PROPOSED WELL PLAN OUTLINE

WELL NAME **Hardy 36 State No. 26**
 LOCATION **870' FNL & 1650' FEL S36-T20S-R37E**

GL - 3504'
 ALL DEPTHS ARE
 BELOW GROUND LEVEL

TVD	MD	FORMATION	DRILLING PROBLEMS & COMMENTS	FORMATION EVALUATION	HOLE SIZE	CASING PROGRAM	FRAC GRAD	FORMATION PRESSURE GRADIENT	MUD WEIGHT & TYPE	DAYS
1000	1000		SHUT IN EDMONT HARDY UNIT INJECTORS NO. 7 & 13 PRIOR TO SPUD		12 1/4"			Loss than 8.3	Spud	
2000	2000	Top Salt @ 1430'	Washouts in Salt Section		11 7/8"	8-5/8", 23#, M-50 ST&C @ 1400' Circulate Cement			10 ppg Brine	1
3000	3000	Base Salt @ 2500'								
		Yates @ 2700'	Possible Deviation							
		7-Rivers @ 2950'								
4000	4000	Queen @ 3530'	Water Flood Zone @ 3600 - 3800' Closest injector is 400' west.	H2S Monitor on at 3500'				Less than 8.4		
		Grayburg @ 3800'								
5000	5000	San Andres @ 4050'	Offset wells had 20 - 170 BPH losses beginning in the San Andres while drilling with water. Mud up with Gel-Starch if necessary to control losses.			Mud up with Gel-Starch if necessary to control losses.				
6000	6000	Glorieta @ 5275'								7
		Blinberry Mkr @ 5810'				Top Tail Cement @ 5800'				
		Tubb Mkr @ 6330'								
		Drinkard @ 6850'		Mud Logger @ 6850'						
7000	7000	Abo @ 6965'								
		Strawn @ 7575'								
8000	8000	TD @ 7900'		GR-CAL-CNL-FDC-MLL-DLL-PE-FMI		Starch/Salt Gel 5-1/2", 17#, K-55, LT&C @ 7900' Circulate Cement			Starch/salt gel	12
		Devonian @ 8050'								15


 M. Pietema, Staff Engineer 11-Feb-98

Ray Hinchcliff, Staff Engineer 11-Feb-98

Huck, Geophysical Advisor 11-Feb-98

Joe Miller, Reservoir Engineer 11-Feb-98

Well Name : Hardy 36 State #26

Location : 870' FNL & 1650' FEL Sec 36, T-20S, R-37E, Lea County, New Mexico

Casing Program :

Surface 8 5/8" casing in 12 1/4" Hole at 1400 ft.

Production 5 1/2" casing in 7 7/8" Hole at 7900 ft.

Cementing Program :

Surface

Lead 365 sacks Class C
Additives 35:65:6 (Poz:Cem:Gel) + 2% CACL2
+ 0.25 pps Cello-Flake
Mixed at 12.7 ppg **Yield** 1.87 cuft/sk

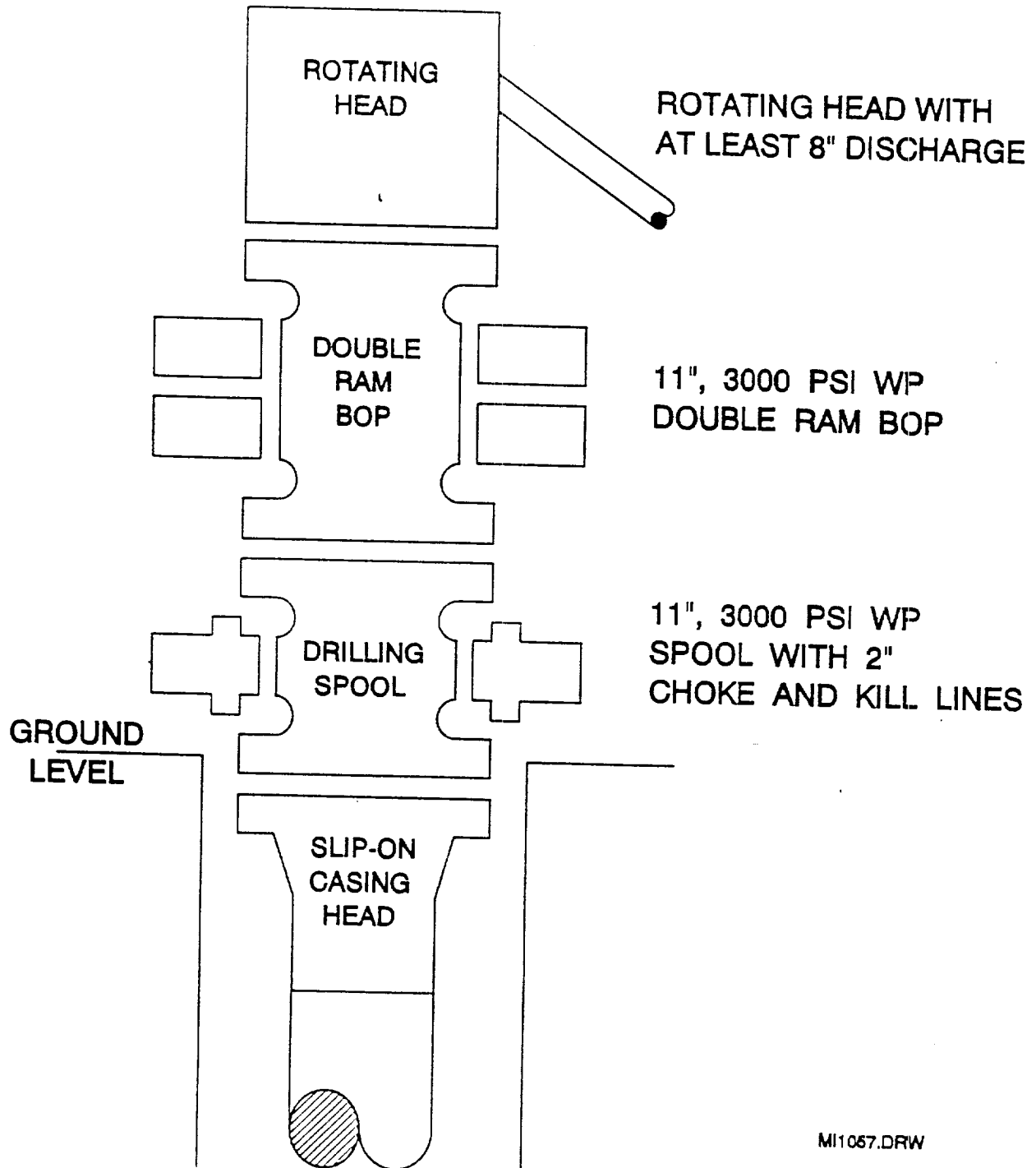
Tail 200 sacks Class C
Additives 2% A-7P
Mixed at 14.8 ppg **Yield** 1.34 cuft/sk

Production

Lead 1035 sacks Class C
Additives 16% Gel + 2% Salt + 0.3% CD-32 + 0.3% SMS
Mixed at 12 ppg **Yield** 2.75 cuft/sk

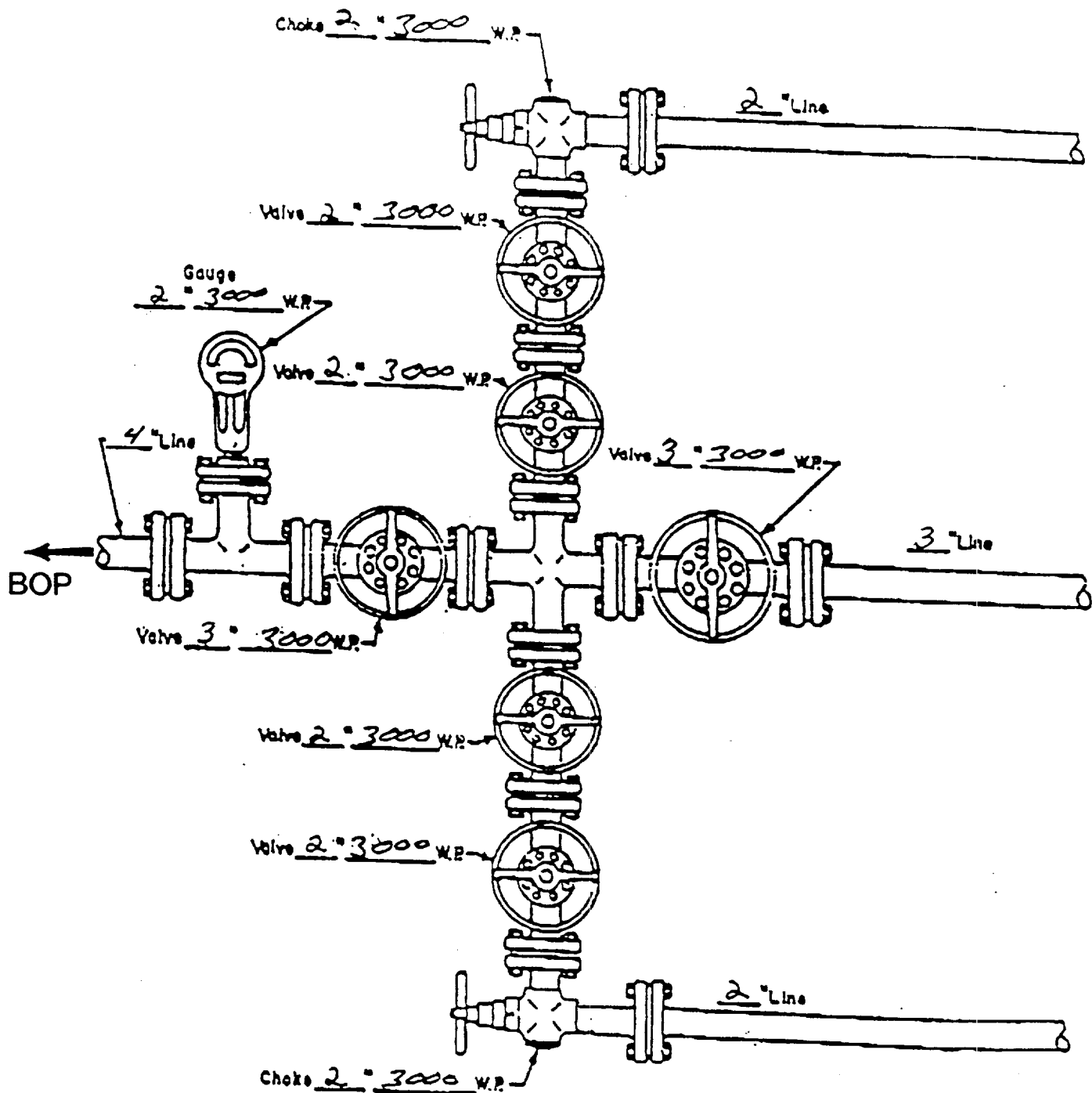
Tail 475 sacks Class C
Additives 1.1% FL-62 + 1% BA-58 + 3% Salt + 0.3% CD-32
+ 0.2% SMS
Mixed at 14.8 ppg **Yield** 1.37 cuft/sk
Free Water 0 % **Fluid Loss** 45 cc/30 min.

BOP SPECIFICATIONS



MI1057.DRW

CHOKE MANIFOLD DIAGRAM



MANIFOLD
3000 #W.P

- ☒ Manual
- ☐ Hydraulic

MOODS
OCD

8/8/74