

OPER. (L) NO. 5073

MULTIPLY BY

FORM APPROVED
OMB NO. 1004-0136
Expires February 28, 1995DEPARTMENT
BUREAU

PROPOSAL NO. 3083

PROPOSAL NO. 57000

DATE 3/2/98

ACRES 30-025-34313

APPLICATION FOR

1a. TYPE OF WORK

DRILL ☒

b. TYPE OF WELL

OIL
WELL ☒GAS
WELL ☐

OTHER

SINGLE
ZONE ☒MULTIPLE
ZONE ☐

2. NAME OF OPERATOR

Conoco Inc.

3a. ADDRESS AND TELEPHONE NO.

10 Desta Dr. Ste 430E, Midland, Tx. 79705-4500

4. LOCATION OF WELL (Report location clearly and in accordance with any State requirements *)

At surface

2490' FSL & 1310' FEL

At proposed prod. zone

2490' FSL & 1310' FEL

14. DISTANCE IN MILES AND DIRECTION FROM NEAREST TOWN OR POST OFFICE*

Unit I

5. LEASE DESIGNATION AND SERIAL NO.

LC NM 5576860-031620A

6. IF INDIAN, ALLOTTEE OR TRIBE NAME

7. UNIT AGREEMENT NAME

8. FARM OR LEASE NAME WELL NO.

SEMU Permian

9. API WELL NO.

128

10. FIELD AND POOL, OR WILDCAT

Skaggs Drinkard

11. SEC. T. R. M. OR BLK.
AND SURVEY OR AREA

Sec. 24, T20S, R37E

12. COUNTY OR PARISH

Lea

13. STATE

NM

5. DISTANCE FROM PROPOSED*

LOCATION TO NEAREST
PROPERTY OR LEASE LINE, FT.
(Also to nearest drlg. unit line, if Any)

16. NO. OF ACRES IN LEASE

17. NO. OF ACRES ASSIGNED
TO THIS WELL

40

8. DISTANCE FROM PROPOSED LOCATION*
TO NEAREST WELL, DRILLING, COMPLETED,
OR APPLIED FOR, ON THIS LEASE, FT.

19. PROPOSED DEPTH

7000'

20. ROTARY OR CABLE TOOLS

Rotary

21. ELEVATIONS (Show whether DF, RT, GR, etc.)

3536 GR

22. APPROX. DATE WORK WILL START*

3-15-98

23. PROPOSED CASING AND CEMENTING PROGRAM

SIZE OF HOLE	GRADE, SIZE OF CASING	WEIGHT PER FOOT	SETTING DEPTH	QUANTITY OF CEMENT
12-1/4"	M-50, 8-5/8"	23#	1250'	565 sxs, circ.
7-7/8"	K-55, 5-1/2"	17#	7000'	1640 sxs, circ.

It is proposed to drill a vertical wellbore as a Drinkard producer according to the plan submitted in the following attachments:

1. Well Location and Acreage Dedication Plat (C-102)
2. Proposed Well Plan Outline
3. Surface Use Plan
4. Exhibit A: Vicinity Map
5. Exhibit B: Location Verification Map
6. Exhibit C.1-C.4: Flow Line, roadway and Electric Line Plats
7. Exhibit D: Trailer Mounted Rig Layout Drawing
8. BOP & Choke Manifold Specifications
9. H2S Drilling Operations Plan
10. Surface owner communications
11. NSL-3854

An archeological survey will be submitted as soon as completed.

The undersigned accepts all applicable terms, conditions, stipulations and restrictions concerning operations conducted on the leased land or portion thereof, as described above and as covered by BLM Bond File No. ES-0085.

IN ABOVE SPACE DESCRIBE PROPOSED PROGRAM: If proposal is to deepen give data on present productive zone and proposed new productive zone. If proposal is to drill or deepen directionally, give pertinent data on subsurface locations and measured and true vertical depths. Give blowout preventer program, if any.

24. SIGNED Mike L. Mankin TITLE Right of Way Agent DATE 1-26-98

(This space for Federal or State office use)

PERMIT NO. _____ APPROVAL DATE _____

Application approval does not warrant or certify that the applicant holds legal or equitable title to those rights in the subject lease which would entitle the applicant to conduct operations thereon.

CONDITIONS OF APPROVAL, IF ANY:

APPROVED BY ADMINISTRATIVE TITLE ADMINISTRATIVE DATE FEB 25 1998

*See Instructions On Reverse Side

Title 18 U.S.C. Section 1001, makes it a crime for any person knowingly and willfully to make to any department or agency of the United States any false, fictitious or fraudulent statements or representations as to any matter within its jurisdiction.

RECEIVED
JUN 27 1968
FRODO BILBO BAGGINS

District I
PO Box 1980, Hobbs, NM 88241-1980
District II
PO Drawer DD, Artesia, NM 88211-0719
District III
1000 Rio Brazos Rd., Aztec, NM 87410
District IV
PO Box 2088, Santa Fe, NM 87504-2088

State of New Mexico
Energy, Minerals & Natural Resources Department

OIL CONSERVATION DIVISION
PO Box 2088
Santa Fe, NM 87504-2088

Form C-102
Revised February 21, 1994
Instructions on back
Submit to Appropriate District Office
State Lease - 4 Copies
Fee Lease - 3 Copies

☐ AMENDED REPORT

WELL LOCATION AND ACREAGE DEDICATION PLAT

*API Number 3D-025-34313		*Pool Code 57000	*Pool Name Skaggs Drinkard
*Property Code 003083	*Property Name SEMU Permian		*Well Number 128
*GRID No. 05073	*Operator Name CONOCO INC.		*Elevation 3536

¹⁰ Surface Location

UL or lot no.	Section	Township	Range	Lot Idn	Feet from the	North/South line	Feet from the	East/West line	County
1	24	20-S	37-E		2490	SOUTH	1310	EAST	LEA

¹¹ Bottom Hole Location If Different From Surface

UL or lot no.	Section	Township	Range	Lot Idn	Feet from the	North/South line	Feet from the	East/West line	County

¹² Dedicated Acres 40	¹³ Joint or Infill	¹⁴ Consolidation Code	¹⁵ Order No. NSL - 3854
-------------------------------------	-------------------------------	----------------------------------	---------------------------------------

NO ALLOWABLE WILL BE ASSIGNED TO THIS COMPLETION UNTIL ALL INTERESTS HAVE BEEN CONSOLIDATED
OR A NON-STANDARD UNIT HAS BEEN APPROVED BY THE DIVISION

16					¹⁷ OPERATOR CERTIFICATION <i>I hereby certify that the information contained herein is true and complete to the best of my knowledge and belief.</i> Signature <u>Mike L. Mankin</u> Printed Name <u>Mike L. Mankin</u> Title <u>Right of Way Agent</u> Date <u>1-26-98</u>
					¹⁸ SURVEYOR CERTIFICATION <i>I hereby certify that the well location shown on this plat was plotted from field notes of actual surveys made by me or under my supervision, and that the same is true and correct to best of my belief.</i> Date of Survey <u>JANUARY</u> Signature and Seal <u>Earl F. Fote</u> Professional Land Surveyor 8278 Certificate Number 8278

PROPOSED WELL PLAN OUTLINE

WELL NAME
LOCATION

SEMU Burger B No. 128
2490' FSL & 1310' FEL Sec 24 T20S-R37E

Ground Level
Kelly Bushing:

Depth MD	FORMATION TOPS	DRILLING PROBLEMS	TYPE OF FORMATION EVALUATION	HOLE SIZE	CASING PROGRAM	FRAC GRAD	FORM PRES. GRAD.	Mud Weight & Type	Days
0		Possible Hole Enlargement & Sloughing		12-1/4"			Normal	8.4 - 9.5 Fresh	
1000	Rustler 1215'				8-5/8", 23#, M-50 ST&C @ 1250'				
2000		Washouts in Salt Section			565 sx, circ.		Normal	10 Brine	3
	Yates 2660'				Top 2nd Stage Tail at 2500'				
3000	7 Rivers 2905'	Possible oil / water flows. Up structure, SEMU 125 & 126 had gas flows in this interval. Over killed well with 14 ppg mud 60' above San Andres		7-7/8"			> 10 ppg		
	Queen 3509'								
	Penrose 3635'								
	Grayburg 3785'		H2S Monitor on at 3600'		DV Tool @ 3700'				
4000	San Andres 3934'	Lost Returns in San Andres							7
5000		High volume water flow in SEMU 126. Could not circ 11 ppg mud to kill.			Top 1st Stage Tail at 5000'				
	Glorietta 5265'	Possible differential sticking thru Glorietta & Paddock							
	Paddock 5338'								
	Blinbry 5790'						Normal		
6000									
	Tubb 6290'								
	Drinkard 6600'								
7000			GR-CAL-DLL-MLL FDC-CNL-PE-Spec. GR TD - 2600'		5-1/2", 17#, K-55 LT&C @ 7000'			10 ppg Starch Gel	17
	TD @ 7000'		Pull GR-Cal to Surf Casing Pull SG TD - 5700'		1640 sx, circ.				

DATE

22-Jan-98

APPROVED


Jim Tietema, Drilling Engineer

Joe Miller, Reservoir Engineer

Well Name : SEMU BURGER B #128

Location :

Casing Program :

Surface 8 5/8" casing in 12 1/4" Hole at 1250 ft.

Production 5 1/2" casing in 7 7/8" Hole at 7000 ft.

Cementing Program :

Surface

Lead 365 sacks Class C Mixed at 12.7 ppg
Additives 35:65:6 (Poz:Cem:Gel) + 2% CACL2
+ 0.25 pps Cello-Flake

Tail 200 sacks Class C Mixed at 14.8 ppg
Additives 2% A-7P

Production

1ST Stage

Lead 170 sacks Class C Mixed at 12 ppg
Additives 16% Gel + 0.4% CD-32 + 0.2% SMS

Tail 515 sacks Class C Mixed at 14.8 ppg
Additives 1.1% FL-62 + 1% BA-58 + 3% Salt + 0.3% CD-32
+ 0.2% SMS

Free Water 0 % Fluid Loss 45 cc/30 min.

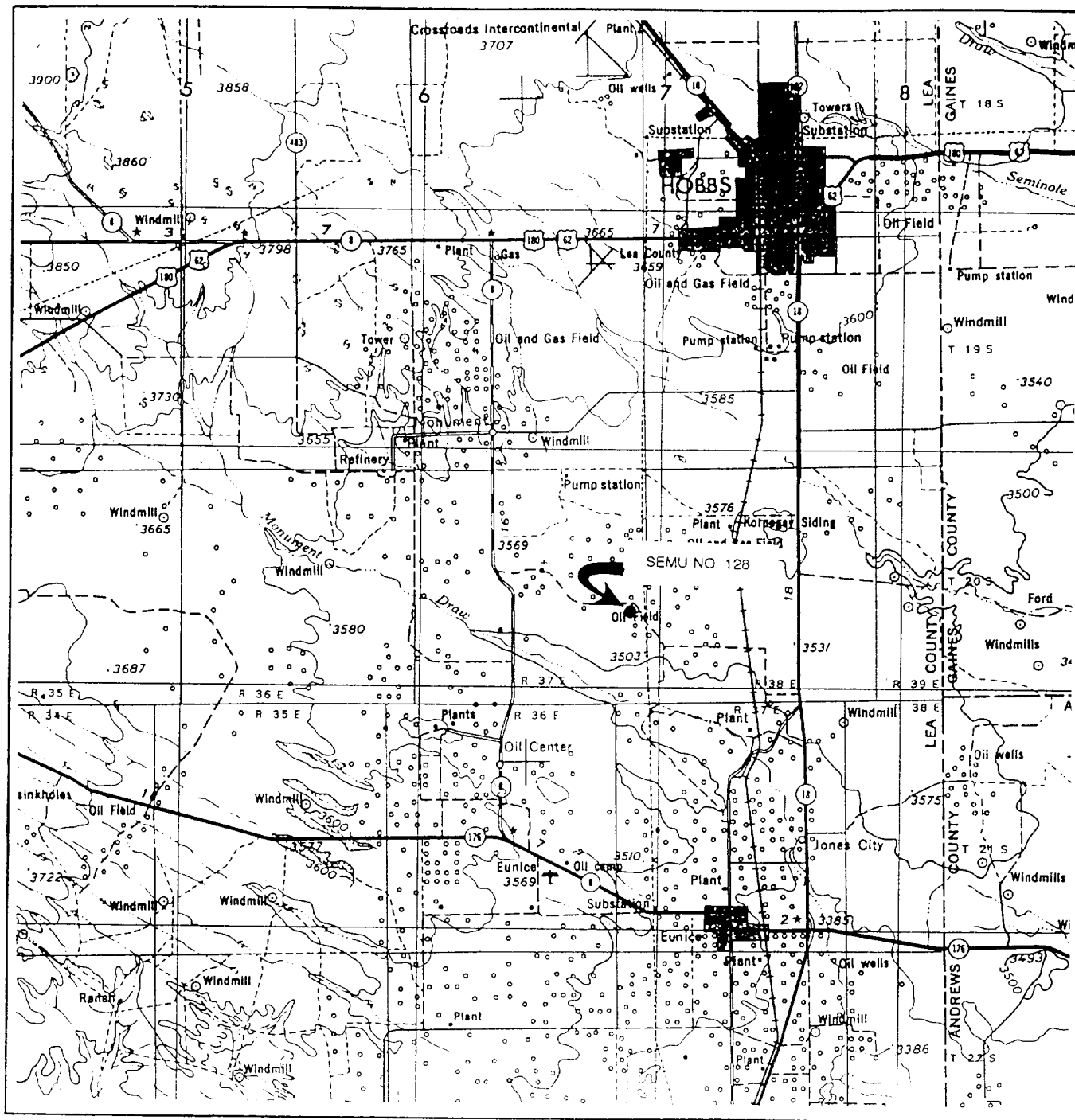
2nd Stage

Lead 465 sacks Class C Mixed at 12 ppg
Additives 16% Gel + 0.4% CD-32 + 0.2% SMS

Tail 490 sacks Class C Mixed at 14.8 ppg
Additives 1.1% FL-62 + 1% BA-58 + 5% Salt + 0.3% CD-32
+ 0.2% SMS

Free Water 0 % Fluid Loss 44 cc/30 min.

VICINITY MAP



WTC 44744

SEC. 24 TWP. 20-S RGE. 37-E

SURVEY N.M.P.M.

COUNTY LEA STATE NM

DESCRIPTION 2490' FSL & 1310' FEL

ELEVATION 3536'

OPERATOR CONOCO INC.

LEASE SEMU WELL NO. 128

SCALE: 1" = 4 MILES

WEST TEXAS CONSULTANTS, INC.

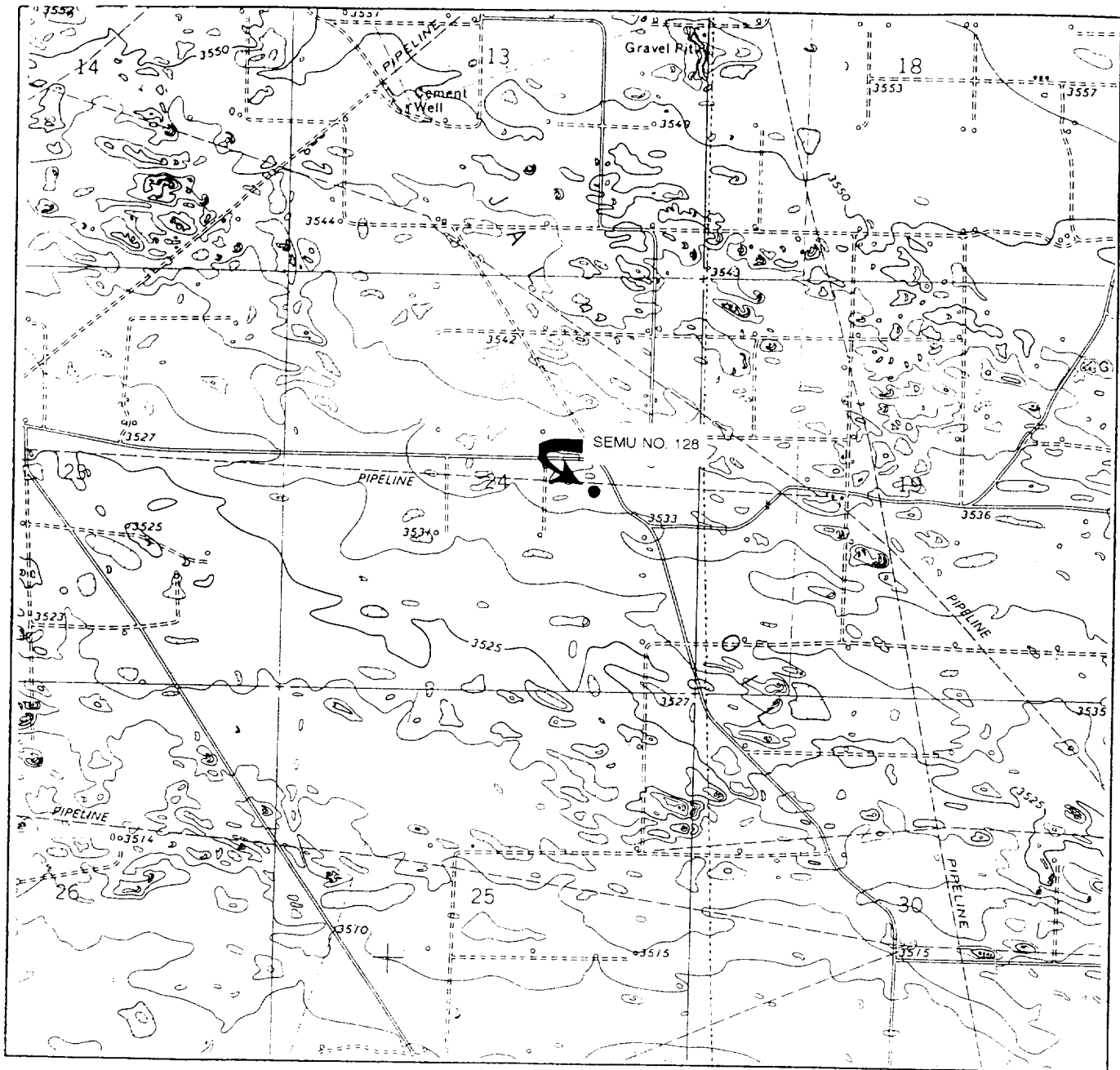
ENGINEERS-PLANNERS-SURVEYORS

MIDLAND, TEXAS

915-685-3800

EXHIBIT A

LOCATION VERIFICATION MAP



SCALE 1" = 2000'

CONTOUR INTERVAL 10'

WTC 44744

SEC 24 TWP 20-S RGE 37-E

SURVEY N.M.P.M.

COUNTY LEA STATE NM

DESCRIPTION 2490' FSL & 1310' FEL

ELEVATION 3536'

OPERATOR CONOCO INC.

LEASE SEMU NO. 128

USGS TOPO MAP HOBBS SW, NM

WEST TEXAS CONSULTANTS, INC.

ENGINEERS-PLANNERS-SURVEYORS

MIDLAND, TEXAS

915-685-3800

EXHIBIT B

BOP SPECIFICATIONS

