

District I
PO Box 1980, Hobbs, NM 88241-1980
District II
811 South First, Artesia, NM 88210
District III
1000 Rio Brazos Rd., Aztec, NM 87410
District IV
2040 South Pacheco, Santa Fe, NM 87505

State of New Mexico
Energy, Minerals & Natural Resources Department

OIL CONSERVATION DIVISION
2040 South Pacheco
Santa Fe, NM 87505

Form C-101
Revised October 18, 1994
Instructions on back
Submit to Appropriate District Office
State Lease - 6 Copies
Fee Lease - 5 Copies



AMENDED REPORT

APPLICATION FOR PERMIT TO DRILL, RE-ENTER, DEEPEN, PLUGBACK, OR ADD A ZONE

¹ Operator Name and Address. Falcon Creek Resources, Inc. 621 17 th St., Suite 1800 Denver, CO 80293-0621		² OGRID Number 169415 ³ API Number 30 - 025-34472
⁴ Property Code 23407	⁵ Property Name Terry	⁶ Well No. 2

⁷ Surface Location

UL or lot no.	Section	Township	Range	Lot Idn	Feet from the	North/South line	Feet from the	East/West line	County
A	24	20S	38E		990	North	990	East	Lea

⁸ Proposed Bottom Hole Location If Different From Surface

UL or lot no.	Section	Township	Range	Lot Idn	Feet from the	North/South line	Feet from the	East/West line	County
A	24	20S	38E		990	North	990	East	Lea

⁹ Proposed Pool 1 Blinebry Oil + Gas (oil)	¹⁰ Proposed Pool 2 East Warren
----------------------------------------------------------	----------------------------------------------

¹¹ Work Type Code N	¹² Well Type Code O	¹³ Cable/Rotary Rotary	¹⁴ Lease Type Code P	¹⁵ Ground Level Elevation 3,566'
¹⁶ Multiple Yes	¹⁷ Proposed Depth 7,950'	¹⁸ Formation Abo Blinebry	¹⁹ Contractor Patterson	²⁰ Spud Date When approved

²¹ Proposed Casing and Cement Program

Hole Size	Casing Size	Casing weight/foot	Setting Depth	Sacks of Cement	Estimated TOC
12-1/4"	9-5/8"	36#/ft	1,600'	650 sx	Circ.
8-3/4"	7"	23 & 26#/ft	7,950'	1850 sx	Circ.

²² Describe the proposed program. If this application is to DEEPEN or PLUG BACK give the data on the present productive zone and proposed new productive zone. Describe the blowout prevention program, if any. Use additional sheets if necessary.

1. Drill 12-1/4" hole to 1,600' or hard formation. Set 9-5/8" K-55 Casing. Cement w/ 450 sx Class "C" + 4% Gel + 2% CaCl₂. Tail with 200 sx Class "C" + 2% CaCl₂.
2. Drill 8-3/4" hole to 7,950'. Run open hole logs.
3. Set 7", 23 & 26#/ft K-55 casing at TD. Cement with 1,050 sx of 35:65 POZ:"C" + 6% Gel + 5% salt. Tail with 800 sx of Class "H" + 2% CaCl₂. Circulate cement to surface.

²³ I hereby certify that the information given above is true and complete to the best of my knowledge and belief.

Signature: *Oscar L. Peters*

Printed name: Oscar L. Peters

Title: District Operations Engineer

Date: July 23, 1998

Phone: (303) 675-0007

OIL CONSERVATION DIVISION

Approved by: *ORIGINAL SIGNED BY CHRIS WILLIAMS*
DISTRICT I SUPERVISOR

Title:

Approved: *DATE 23 1998*

Expiration Date:

Conditions of Approval:
Attached ☐

*gk
mjp*

DISTRICT I
P.O. Box 1980, Hobbs, NM 88241-1980

DISTRICT II
P.O. Drawer DD, Artesia, NM 88211-0719

DISTRICT III
1000 Rio Brazos Rd., Aztec, NM 87410

DISTRICT IV
P.O. BOX 2088, SANTA FE, N.M. 87504-2088

State of New Mexico
Energy, Minerals and Natural Resources Department

Form C-102
Revised February 10, 1994
Submit to Appropriate District Office
State Lease - 4 Copies
Fee Lease - 3 Copies

OIL CONSERVATION DIVISION

P.O. Box 2088
Santa Fe, New Mexico 87504-2088

☐ AMENDED REPORT

WELL LOCATION AND ACREAGE DEDICATION PLAT

API Number 30-025-34472	Pool Code 666	Pool Name Blipery Oil + Gas
Property Code 23407	Property Name TERRY	Well Number 2
OGRID No. 169415	Operator Name FALCON CREEK RESOURCES	Elevation 3566

Surface Location

UL or lot No. A	Section 24	Township 20 S	Range 38 E	Lot Idn	Feet from the 990	North/South line NORTH	Feet from the 990	East/West line EAST	County LEA
--------------------	---------------	------------------	---------------	---------	----------------------	---------------------------	----------------------	------------------------	---------------

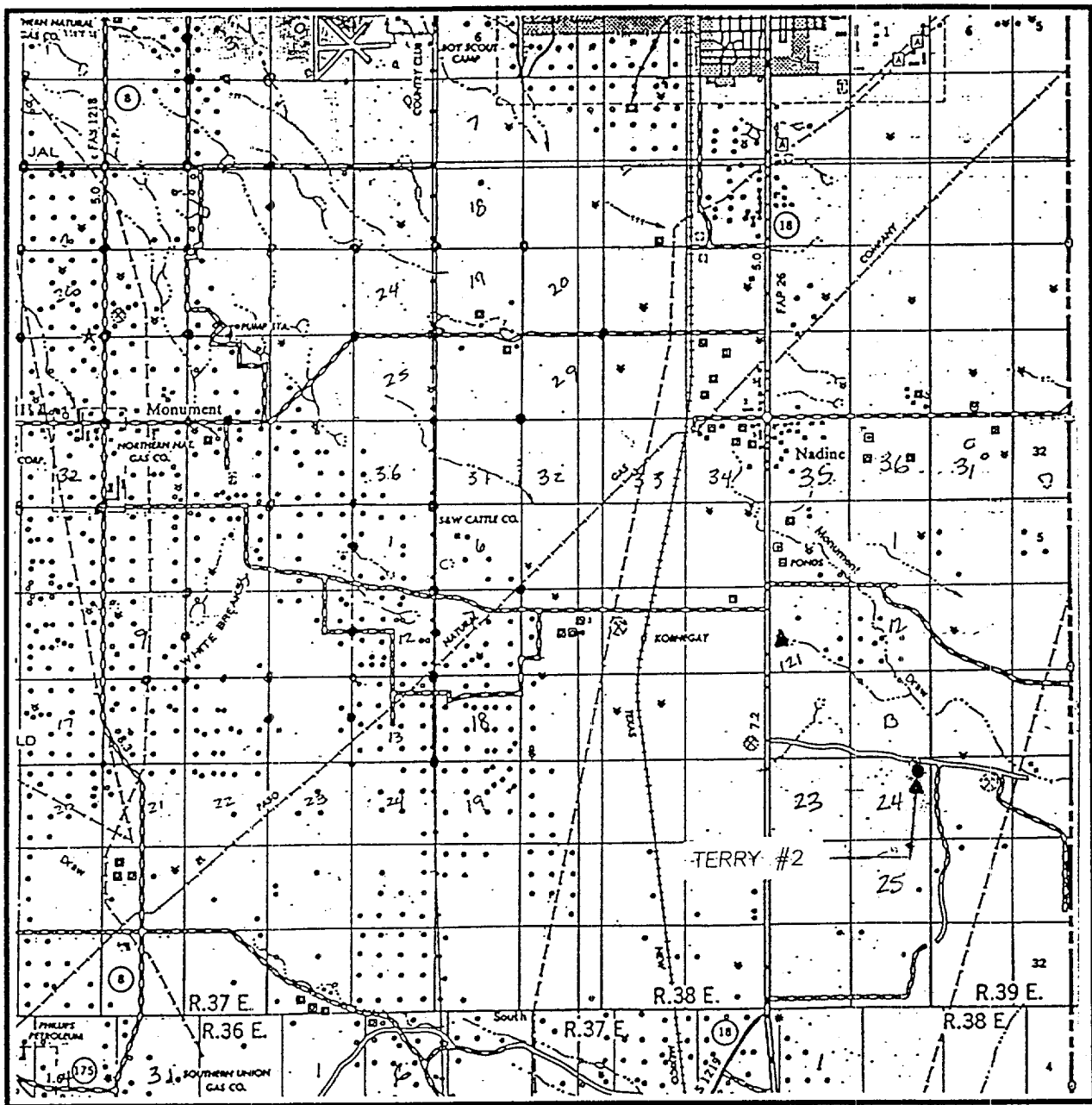
Bottom Hole Location If Different From Surface

UL or lot No.	Section	Township	Range	Lot Idn	Feet from the	North/South line	Feet from the	East/West line	County
Dedicated Acres 40	Joint or Infill	Consolidation Code	Order No.						

NO ALLOWABLE WILL BE ASSIGNED TO THIS COMPLETION UNTIL ALL INTERESTS HAVE BEEN CONSOLIDATED
OR A NON-STANDARD UNIT HAS BEEN APPROVED BY THE DIVISION

	OPERATOR CERTIFICATION I hereby certify the the information contained herein is true and complete to the best of my knowledge and belief. Signature Oscar L. Peters Printed Name District Operations Engineer Title July 23, 1998 Date	
	SURVEYOR CERTIFICATION I hereby certify that the well location shown on this plat was plotted from field notes of actual surveys made by me or under my supervision and that the same is true and correct to the best of my belief. JUNE 30, 1998 Date Surveyed Signature & Seal of Professional Surveyor RONALD J. EIDSON 7-02-98 98-11-0947	
	Certificate No. RONALD J. EIDSON 3239 GARY EIDSON 12641 MAISON McDONALD 12185	

VICINITY MA.



SCALE: 1" = 2 MILES

SEC. 24 TWP. 20-S RGE. 38-E

SURVEY N.M.P.M.

COUNTY LEA

DESCRIPTION 990' FNL & 990' FEL

ELEVATION 3566

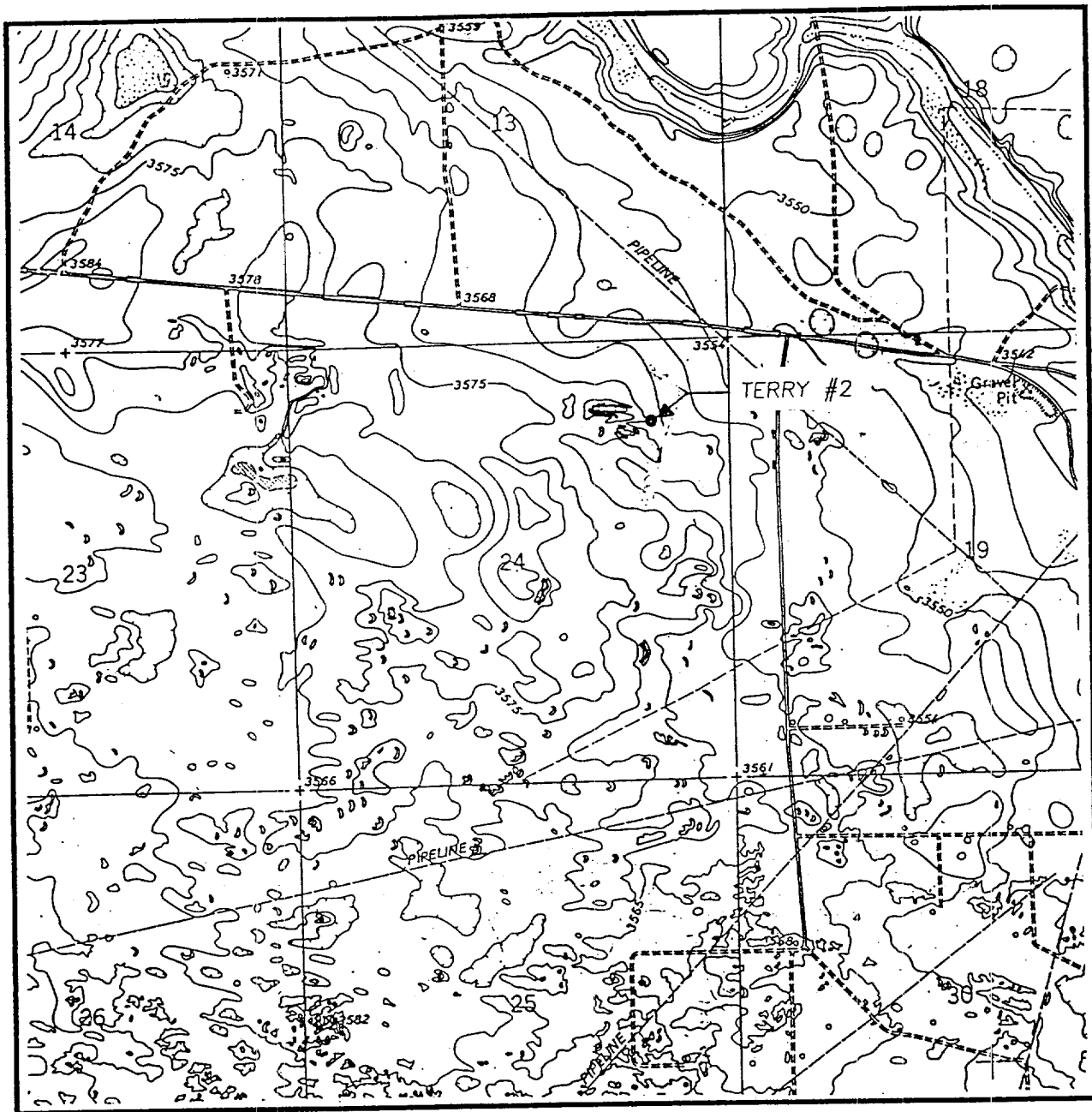
OPERATOR FALCON CREEK RESOURCES

LEASE TERRY

JOHN WEST ENGINEERING
HOBBS, NEW MEXICO

(505) 393-3117

LOCATION VERIFICATION MAP



SCALE: 1" = 2000'

CONTOUR INTERVAL:
HOBBS SE - 5'

SEC. 24 TWP. 20-S RGE. 38-E

SURVEY _____ N.M.P.M.

COUNTY _____ LEA

DESCRIPTION 990' FNL & 990' FEL

ELEVATION _____ 3566

OPERATOR FALCON CREEK RESOURCES

LEASE _____ TERRY

U.S.G.S. TOPOGRAPHIC MAP

HOBBS SE, N.M.

JOHN WEST ENGINEERING
HOBBS, NEW MEXICO

(505) 393-3117