

District I
PO Box 1980, Hobbs, NM 88241-1980
District II
811 S. 1st Street, Artesia, NM 88210-2834
District III
1000 Rio Brazos Rd., Aztec, NM 87410
District IV
2040 South Pacheco, Santa Fe, NM 87505

State of New Mexico
Energy, Minerals & Natural Resources Department

OIL CONSERVATION DIVISION
2040 South Pacheco
Santa Fe, NM 87505

Form C-101
Revised October 18, 1994
Instructions on back
Submit to Appropriate District Office
State Lease - 6 Copies
Fee Lease - 5 Copies

☐ AMENDED REPORT

APPLICATION FOR PERMIT TO DRILL, RE-ENTER, DEEPEN, PLUGBACK, OR ADD A ZONE

¹ Operator name and Address Chevron U.S.A. Inc. P.O. Box 1150 Midland, TX 79702		² OGRID Number 4323
⁴ Property Code 2571	⁵ Property Name ARROWHEAD GRAYBURG UNIT	³ API Number 30-025-34637
		⁶ Well No. 342

⁷ Surface Location									
UL or lot no.	Section	Township	Range	Lot. Idn.	Feet from the	North/South Line	Feet from the	East/West line	County
20	2	22S	36E	10	1310	NORTH	1330	EAST	LEA

⁸ Proposed Bottom Hole Location If Different From Surface									
UL or lot no.	Section	Township	Range	Lot. Idn.	Feet from the	North/South Line	Feet from the	East/West line	County
⁹ Proposed Pool 1 ARROWHEAD GRAYBURG 03040					¹⁰ Proposed Pool 2				

¹¹ Work Type Code N	¹² Well Type Code O	¹³ Cable/Rotary ROTARY	¹⁴ Lease Type Code S	¹⁵ Ground Level Elevation 3547'
¹⁶ Multiple	¹⁷ Proposed Depth 3939'	¹⁸ Formation GRAYBURG	¹⁹ Contractor UNKNOWN	²⁰ Spud Date 6/1/99

²¹ Proposed Casing and Cement Program					
Hole Size	Casing Size	Casing weight/foot	Setting Depth	Sacks of Cement	Estimated TOC
11"	8-5/8"	24	500'	275	SURF
7-7/8"	5-1/2"	15.5	3939'	625	SURF

²² Describe the proposed program. If this application is to DEEPEN or PLUG BACK give the data on the present productive zone and proposed new productive zone. Describe the blowout prevention program, if any. Use additional sheets if necessary

CHEVRON PROPOSES TO:
DRILL 11" HOLE TO 500', RUN 8-5/8" CSG. CMT W/CLASS "C" TO SURF.
DRILL 7-7/8" HOLE TO 3939', RUN 5-1/2" CSG. CMT W/CLASS "C" TO SURF.

MUD PROGRAM: 0' - 500' 8.4 PPG FRESH WATER
500' - 3939' 10.0 PPG BRINE WATER

CHEVRON CLASS II BOPE

Permit Expires 1 Year From Approval
Date Unless Drilling Underway

²³ I hereby certify that the information given above is true and complete to the best of my knowledge and belief.

Signature: *J. K. Ripley*

Printed name: J. K. RIPLEY

Title: TECHNICAL ASSISTANT

OIL CONSERVATION DIVISION

Approved by: *CHRISTOPHER WILLIAMS*

Title: *DEPUTY DISTRICT MANAGER*

Approval Date: *JUN 10 1999* Expiration Date:

5/25/99

(915)687-7148

*ct
mp*

DISTRICT II
P.O. Drawer DD, Artesia, NM 88211-0719

DISTRICT III
1000 Rio Brazos Rd., Aztec, NM 87410

DISTRICT IV
P.O. BOX 2088, SANTA FE, N.M. 87504-2088

OIL CONSERVATION DIVISION
P.O. Box 2088
Santa Fe, New Mexico 87504-2088

☐ AMENDED REPORT

WELL LOCATION AND ACREAGE DEDICATION PLAT

API Number 30-025-34637	Pool Code 03040	Pool Name ARROWHEAD:GRAYBURG
Property Code 2571	Property Name AGU	Well Number 342
OGRID No. 4323	Operator Name CHEVRON U.S.A. PRODUCTION COMPANY	Elevation 3547

Surface Location

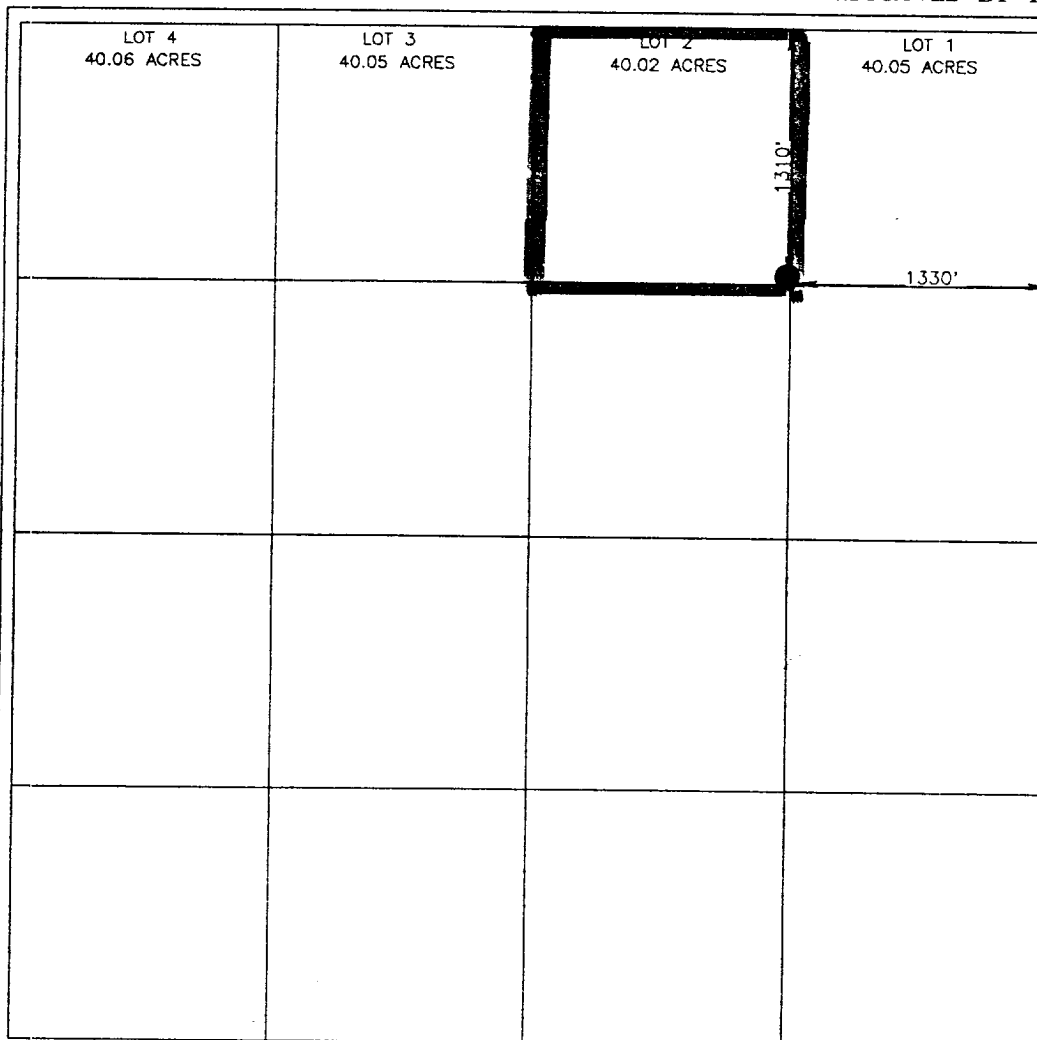
UL or lot No.	Section	Township	Range	Lot Idn	Feet from the	North/South line	Feet from the	East/West line	County
LOT 2	2	22 S	36 E	2	1310	NORTH	1330	EAST	LEA

Bottom Hole Location If Different From Surface

UL or lot No.	Section	Township	Range	Lot Idn	Feet from the	North/South line	Feet from the	East/West line	County

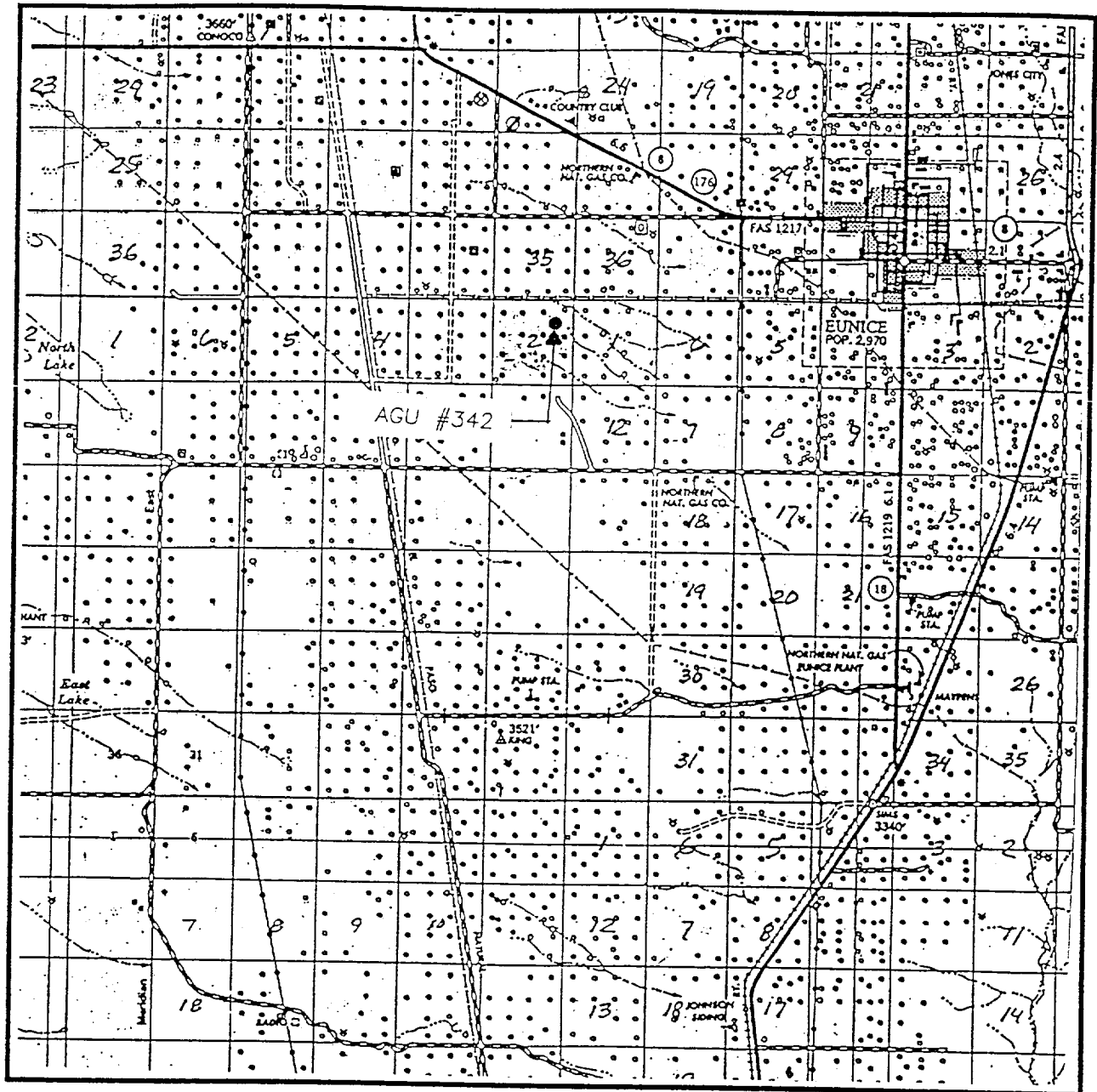
Dedicated Acres 40.02	Joint or Infill	Consolidation Code	Order No.
--------------------------	-----------------	--------------------	-----------

**NO ALLOWABLE WILL BE ASSIGNED TO THIS COMPLETION UNTIL ALL INTERESTS HAVE BEEN CONSOLIDATED
OR A NON-STANDARD UNIT HAS BEEN APPROVED BY THE DIVISION**



OPERATOR CERTIFICATION	
I hereby certify the the information contained herein is true and complete to the best of my knowledge and belief.	
<i>J. K. Ripley</i>	
Signature	
J. K. RIPLEY	
Printed Name	
REG OA	
Title	
5/25/99	
Date	
SURVEYOR CERTIFICATION	
I hereby certify that the well location shown on this plat was plotted from field notes of actual surveys made by me or under my supervision, and that the same is true and correct to the best of my belief.	
MAY 17, 1999	
Date Surveyed	
DMCC	
Signature of Professional Surveyor	
RONALD E. EDSON	
5-18-99	
99-391-0335	
Certificate No. RONALD E. EDSON 3239	
GARY E. EDSON 12641	
MALCOLM McDONALD 12185	
REGISTERED PROFESSIONAL SURVEYOR	

VICINITY MA.

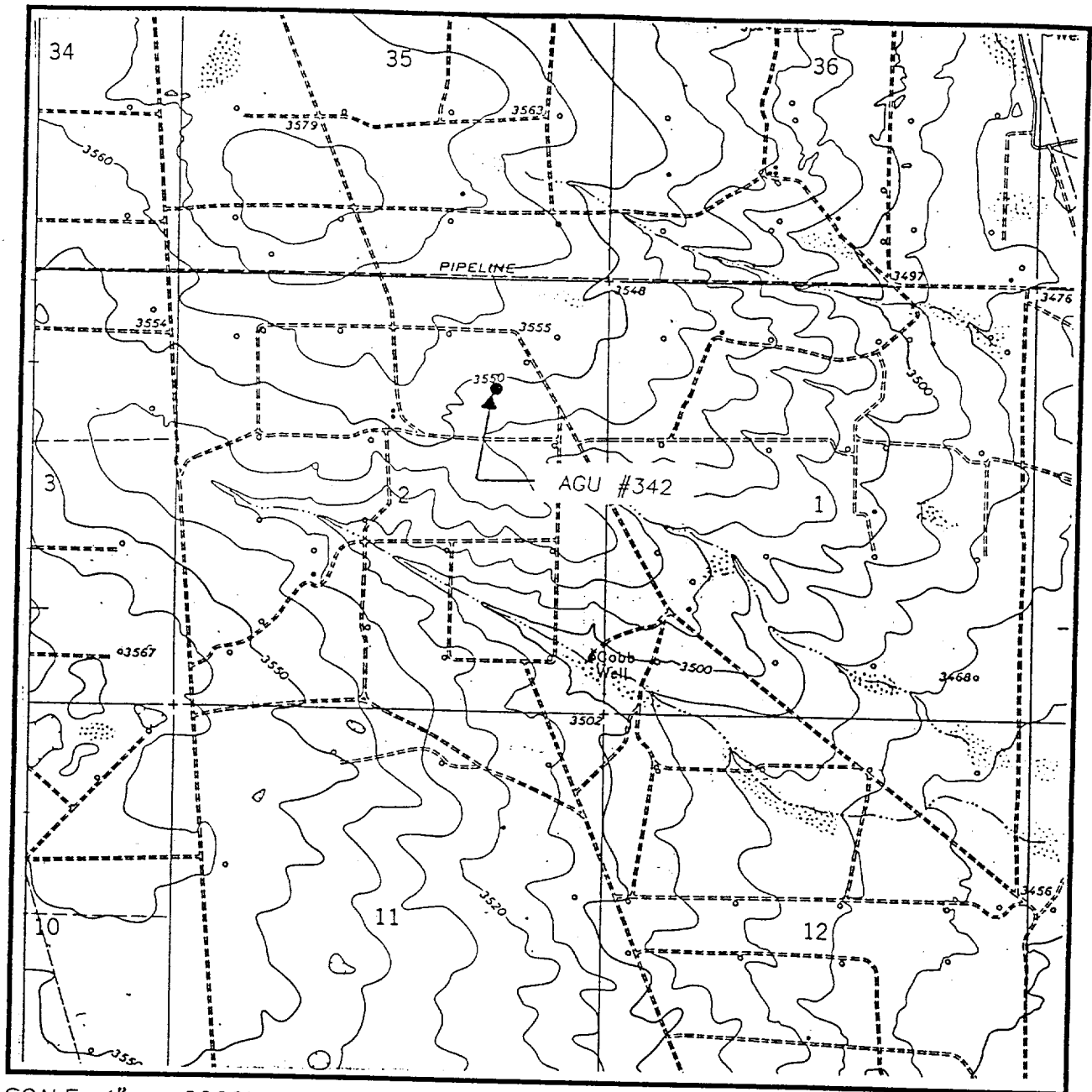


SCALE: 1" = 2 MILES

SEC. 2 TWP. 22-S RGE. 36-E
 SURVEY N.M.P.M.
 COUNTY LEA
 DESCRIPTION 1310' FNL & 1330' FEL
 ELEVATION 3547
 OPERATOR CHEVRON U.S.A.
 LEASE PRODUCTION COMPANY
 AGU

JOHN WEST SURVEYING
HOBBS, NEW MEXICO
(505) 393-3117

LOCATION VERIFICATION MAP



SCALE: 1" = 2000'

CONTOUR INTERVAL:
EUNICE - 10'

SEC. 2 TWP. 22-S RGE. 36-E

SURVEY N.M.P.M.

COUNTY LEA

DESCRIPTION 1310' FNL & 1330' FEL

ELEVATION 3547

CHEVRON U.S.A.

OPERATOR PRODUCTION COMPANY

LEASE AGU

U.S.G.S. TOPOGRAPHIC MAP

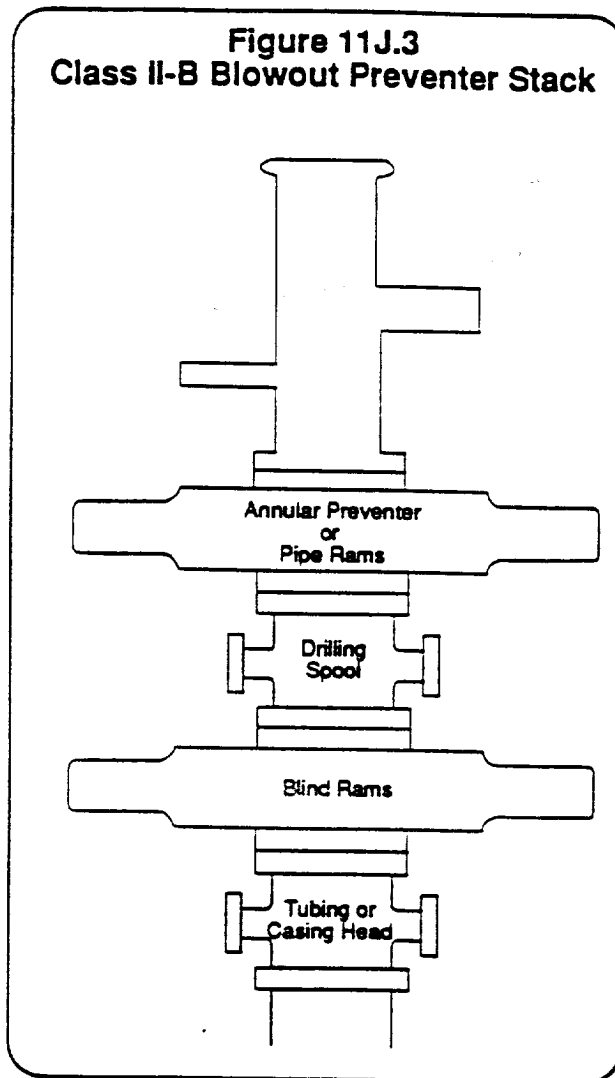
EUNICE, N.M.

JOHN WEST SURVEYING
HOBBS, NEW MEXICO
(505) 393-3117

CHEVRON DRILLING REFERENCE SERIES
VOLUME ELEVEN
WELL CONTROL AND BLOWOUT PREVENTION

D. CLASS II-B BLOWOUT PREVENTER STACK:

Figure 11J.3
Class II-B Blowout Preventer Stack



The Class II-B preventer stack is designed for drilling or workover operations. It is composed of a single hydraulically operated annular preventer on top, then a drilling spool, and a single blind ram preventer on bottom. In an alternate configuration, a single pipe ram preventer may be substituted for the annular preventer. The choke and kill lines are installed onto the drilling spool and must have a minimum internal diameter of 2". An emergency kill line may be installed on the wellhead. As the maximum anticipated surface pressure of this stack is less than 2000 psi, screwed connections may be used. All components must be of steel construction. The Class II-B blowout preventer stack is shown to the left in Figure 11J.3.

ELF 7/27/99
ABOVE DATE DOES NOT
INDICATE WHEN
CONFIDENTIAL LOGS
WILL BE RELEASED