

DISTRICT I
P.O. Box 1980, Hobbs, NM 88241-1980

State of New Mexico

Energy, Minerals and Natural Resources Department

Form C-102
Revised February 10, 1994
Submit to Appropriate District Office
State Lease - 4 Copies
Fee Lease - 3 Copies

DISTRICT II
P.O. Drawer DD, Artesia, NM 88211-0719

DISTRICT III
1000 Rio Brazos Rd., Artec, NM 87410

DISTRICT IV
P.O. Box 2088, Santa Fe, NM 87504-2088

OIL CONSERVATION DIVISION

P.O. Box 2088
Santa Fe, New Mexico 87504-2088

☐ AMENDED REPORT

WELL LOCATION AND ACREAGE DEDICATION PLAT

API Number 30-025-34706	Pool Code 51689	Pool Name W. Red Tank Delaware
Property Code 9316	Property Name COVINGTON "A" FEDERAL	Well Number 35
OGRID No. 017891	Operator Name POGO PRODUCING COMPANY	Elevation 3762

Surface Location

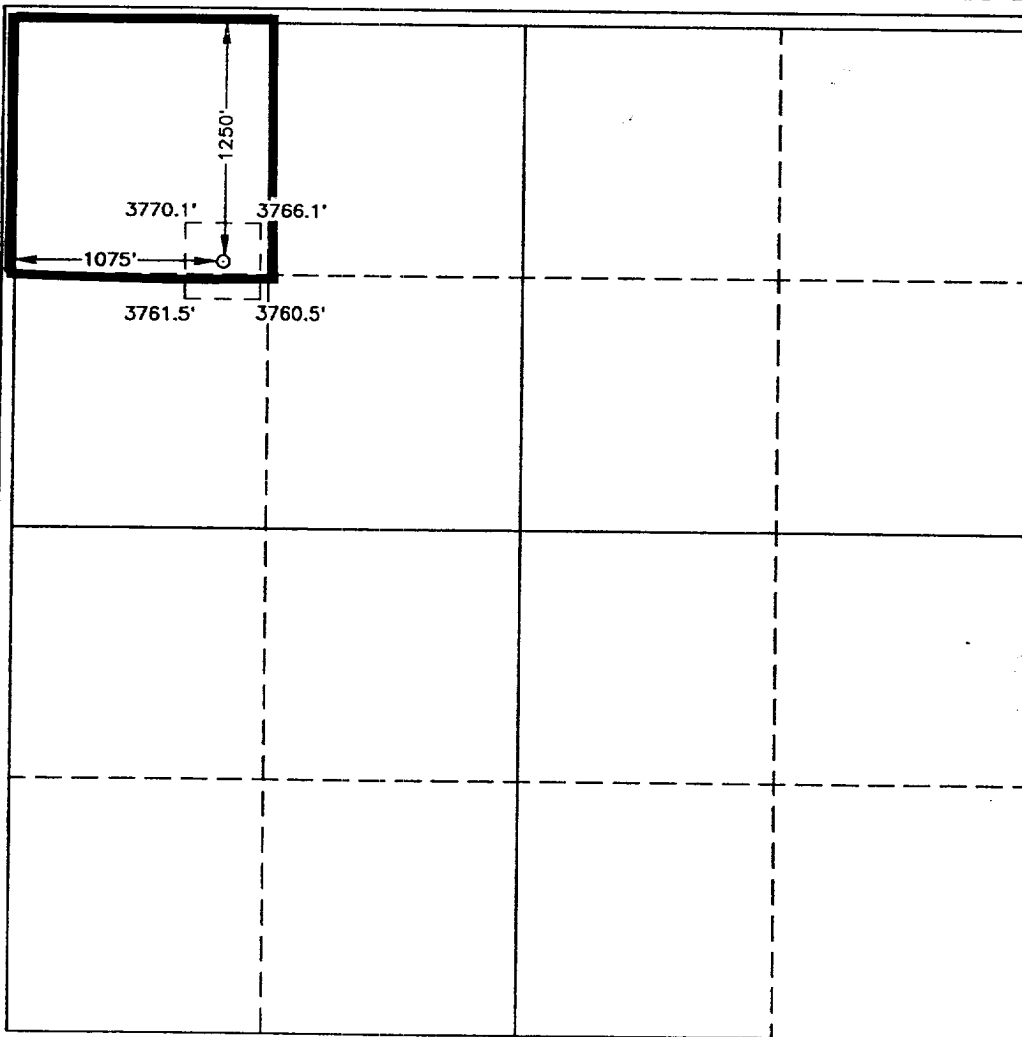
UL or lot No. D	Section 25	Township 22 S	Range 32 E	Lot Idn	Feet from the 1250	North/South line NORTH	Feet from the 1075	East/West line WEST	County LEA
--------------------	---------------	------------------	---------------	---------	-----------------------	---------------------------	-----------------------	------------------------	---------------

Bottom Hole Location If Different From Surface

UL or lot No.	Section	Township	Range	Lot Idn	Feet from the	North/South line	Feet from the	East/West line	County
---------------	---------	----------	-------	---------	---------------	------------------	---------------	----------------	--------

Dedicated Acres 40	Joint or Infill	Consolidation Code	Order No. NSL-4205
-----------------------	-----------------	--------------------	-----------------------

NO ALLOWABLE WILL BE ASSIGNED TO THIS COMPLETION UNTIL ALL INTERESTS HAVE BEEN CONSOLIDATED
OR A NON-STANDARD UNIT HAS BEEN APPROVED BY THE DIVISION



OPERATOR CERTIFICATION

I hereby certify that the information contained herein is true and complete to the best of my knowledge and belief.

Cathy Tomberlin
Signature

Cathy Tomberlin
Printed Name

Operation Tech
Title

12/20/99
Date

SURVEYOR CERTIFICATION

I hereby certify that the well location shown on this plat was plotted from field notes of actual surveys made by me or under my supervision, and that the same is true and correct to the best of my belief.

JUNE 6, 1998

Date Surveyed JLP

Signature & Seal of Professional Surveyor

Raymond E. Edson
NEW MEXICO
659-98

J.W.O. Num. 98-0858

Certified No. RONALD G. EIDSON, 3239
PROFESSIONAL G. EIDSON, 12641
MACON McDONALD, 12185