

UNITED STATES
DEPARTMENT OF THE INTERIOR
BUREAU OF LAND MANAGEMENT

APPLICATION FOR PERMIT TO DRILL OR DEEPEN

1a. TYPE OF WORK

DRILL ☒DEEPEN ☐

b. TYPE OF WELL

OIL
WELL ☒GAS
WELL ☐OTHER ☐SINGLE
ZONE ☒MULTIPLE
ZONE ☐

2. NAME OF OPERATOR

POGO PRODUCING COMPANY (RICHARD WRIGHT) 915-685-8140

3. ADDRESS AND TELEPHONE NO.

P.O. BOX 10340 MIDLAND, TEXAS 79702-7340 Ph 915-685-8100

4. LOCATION OF WELL (Report location clearly and in accordance with any State requirements.)*

At surface

1250' FNL & 1075' FWL SEC. 22 T22S-R32E LEA CO. NM

At proposed prod. zone SAME

(Unit D)

14. DISTANCE IN MILES AND DIRECTION FROM NEAREST TOWN OR POST OFFICE*

Approximately 30 miles East of Carlsbad New Mexico

15. DISTANCE FROM PROPOSED*

LOCATION TO NEAREST
PROPERTY OR LEASE LINE, FT.
(Also to nearest drilg. unit line, if any)

1250'

18. DISTANCE FROM PROPOSED LOCATION*

TO NEAREST WELL, DRILLING, COMPLETED,
OR APPLIED FOR, ON THIS LEASE, FT.

1000'

21. ELEVATIONS (Show whether DF, RT, GR, etc.)

3762' GR.

23.

PROPOSED CASING AND CEMENTING PROGRAM

SIZE OF HOLE	GRADE, SIZE OF CASING	WEIGHT PER FOOT	SETTING DEPTH	QUANTITY OF CEMENT
25"	20" conductor	NA	40'	Cement to surface with Redi-mix
14 3/4"	H-40 10 3/4"	32.75	850'	750 Sx. Circulate cement to surface
9 7/8"	J-55 7 5/8"	26.4	4650'	1250 Sx. " " " "
6 3/4"	J-55, N-80 4 1/2"	11.6	9100'	1425 Sx. Top of cement 4000'

1. Drill 25" hole to 40'. Set 40' of 20" conductor and cement to surface with Redi-mix.
2. Drill 14 3/4" hole to 850'. Run and set 850' of 10 3/4" H-40 32.75# ST&C casing. Cement with 750 Sx. of Class "C" cement + additives, circulate cement to surface.
3. Drill 9 7/8" hole to 4650'. Run and set 4650' of 7 5/8" J-55 26.4# ST&C casing. Cement with 1250 Sx. of Class "C" cement + additives, circulate cement to surface.
4. Drill 6 3/4" hole to 9100'. Run and set 9100' of 4 1/2" N-80 & J-55 11.6# LT&C casing as follows: 2100' of N-80 LT&C, 5500' of J-55 LT&C, 1500' of N-80 LT&C casing. Cement with 1425 Sx. of Class "H" premium cement + additives, bring cement back to 4000'.

IN ABOVE SPACE DESCRIBE PROPOSED PROGRAM: If proposal is to deepen, give data on present productive zone and proposed new productive zone. If proposal is to drill or deepen directionally, give pertinent data on subsurface locations and measured and true vertical depths. Give blowout preventer program, if any.

24.

SIGNED

TITLE Agent

DATE 06/15/98

(This space for Federal or State office use)

PERMIT NO.

APPROVAL DATE

Application approval does not warrant or certify that the applicant holds legal or equitable title to those rights in the subject lease with
CONDITIONS OF APPROVAL, IF ANY:Acting
Assistant Field Office Manager
Lands and Minerals

APPROVED BY

TITLE

DATE

JUL 09 1998

*See Instructions On Reverse Side

5. LEASE DESIGNATION AND SERIAL NO.
NM- 23796. IF INDIAN, ALLOTTEE OR TRIBE NAME
-----7. UNIT AGREEMENT NAME

8. FARMOR LEASE NAME, WELL NO.

COVINGTON "A" FEDERAL # 35

9. API WELL NO.

30-025-34706

10. FIELD AND POOL, OR WILDCAT

RED TANK BONE SPRING

11. SEC., T., R., M., OR BLK.
AND SURVEY OR AREA

SEC. 25 T22S-R32E

12. COUNTY OR PARISH

13. STATE

LEA CO.

New Mexico

16. NO. OF ACRES IN LEASE

1280

17. NO. OF ACRES ASSIGNED
TO THIS WELL

40

19. PROPOSED DEPTH

9100'

20. ROTARY OR CABLE TOOLS

ROTARY

22. APPROX. DATE WORK WILL START*

WHEN APPROVED

OPER. LOGRID NO. 17891

PROPERTY NO. 9316

POOL CODE 51683

EFF. DATE 9-17-99

API NO. 30-025-34706

CJ
mp

RECEIVED
JUN 16 4 55
FBI - NEW YORK

DISTRICT I
P.O. Box 1980, Hobbs, NM 88241-1980

DISTRICT II
P.O. Drawer DD, Artesia, NM 88211-0719

DISTRICT III
1000 Rio Brazos Rd., Aztec, NM 87410

DISTRICT IV
P.O. Box 2088, Santa Fe, NM 87504-2088

State of New Mexico

Energy, Minerals and Natural Resources Department

Form C-102
Revised February 10, 1994
Submit to Appropriate District Office
State Lease - 4 Copies
Fee Lease - 3 Copies

OIL CONSERVATION DIVISION

P.O. Box 2088

Santa Fe, New Mexico 87504-2088

☐ AMENDED REPORT

WELL LOCATION AND ACREAGE DEDICATION PLAT

API Number 30-025-34706	Pool Code 51683	Pool Name RED TANK BONE SPRING
Property Code 009316	Property Name COVINGTON "A" FEDERAL	Well Number 35
OGRID No. 17891	Operator Name POGO PRODUCING COMPANY	Elevation 3762

Surface Location

UL or lot No.	Section	Township	Range	Lot Idn	Feet from the	North/South line	Feet from the	East/West line	County
D	25	22 S	32 E		1250	NORTH	1075	WEST	LEA

Bottom Hole Location If Different From Surface

UL or lot No.	Section	Township	Range	Lot Idn	Feet from the	North/South line	Feet from the	East/West line	County
Dedicated Acres 40	Joint or Infill	Consolidation Code	Order No. NSL 4205						

NO ALLOWABLE WILL BE ASSIGNED TO THIS COMPLETION UNTIL ALL INTERESTS HAVE BEEN CONSOLIDATED
OR A NON-STANDARD UNIT HAS BEEN APPROVED BY THE DIVISION

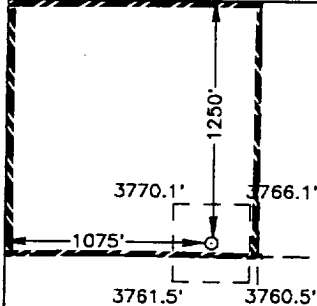
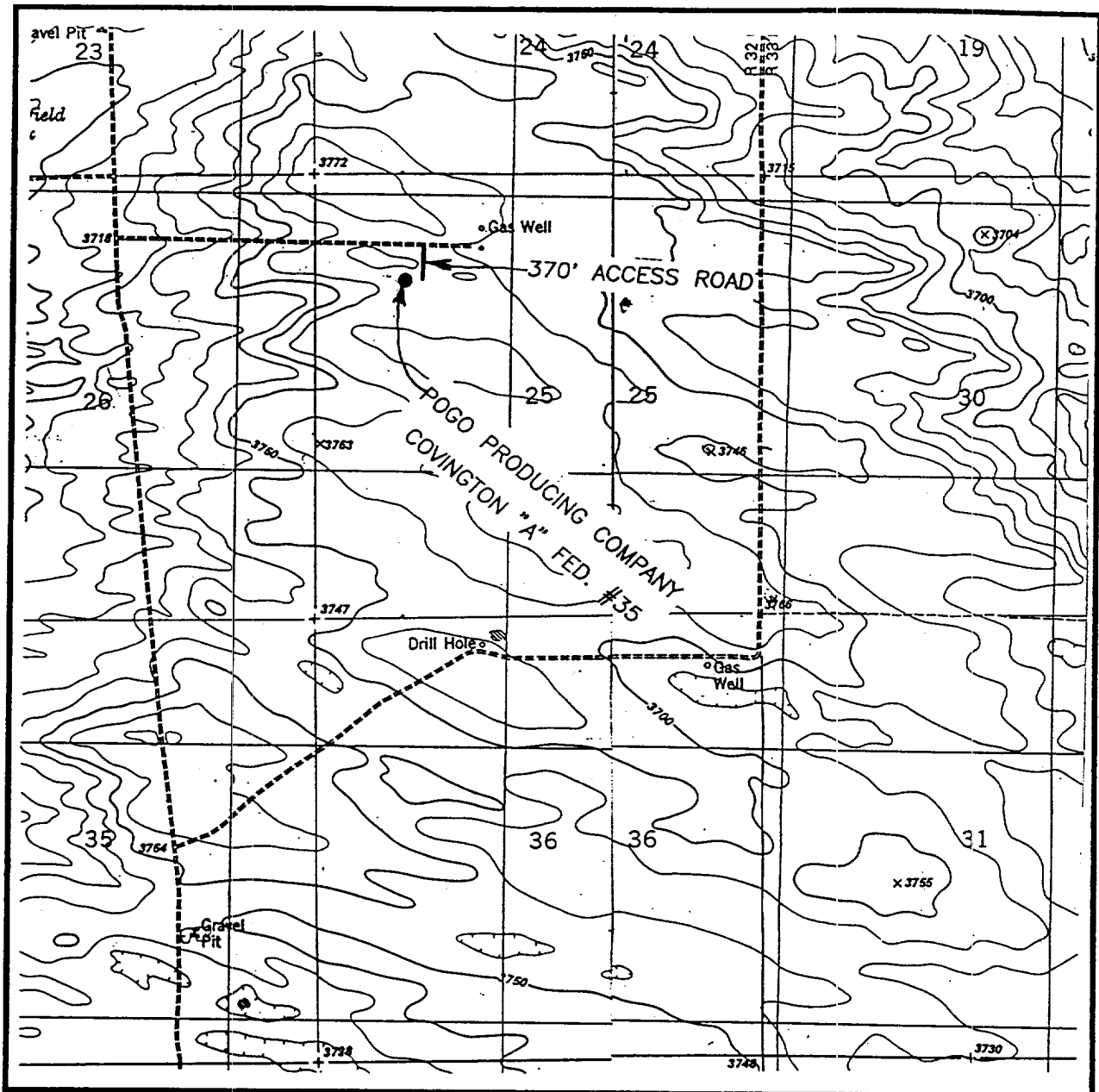
	<p>OPERATOR CERTIFICATION</p> <p>I hereby certify the the information contained herein is true and complete to the best of my knowledge and belief.</p> <p><i>Joe T. Janica</i> Signature</p> <p>Joe T. Janica Printed Name</p> <p>Agent Title</p> <p>06/15/98 Date</p> <p>SURVEYOR CERTIFICATION</p> <p>I hereby certify that the well location shown on this plat was plotted from field notes of actual surveys made by me or under my supervision, and that the same is true and correct to the best of my belief.</p> <p>JUNE 6, 1998</p> <p>Date Surveyed</p> <p><i>Ronald J. Edson</i> Signature & Seal of Professional Surveyor</p> <p>W.O. Num 98-110858</p> <p>Certificate No. RONALD J. EDSON, 3239 GARY G. EIDSON, 12841 MACON McDONALD, 12185</p>
--	--

EXHIBIT "A"

LOCATION VERIFICATION MAP



SCALE: 1" = 2000'

CONTOUR INTERVAL - 10'

SEC. 25 TWP. 22-S RGE. 32-E

SURVEY N.M.P.M.

COUNTY LEA

DESCRIPTION 1250' FNL & 1075' FWL

ELEVATION 3762'

OPERATOR POGO PRODUCING COMPANY

LEASE COVINGTON "A" FED.

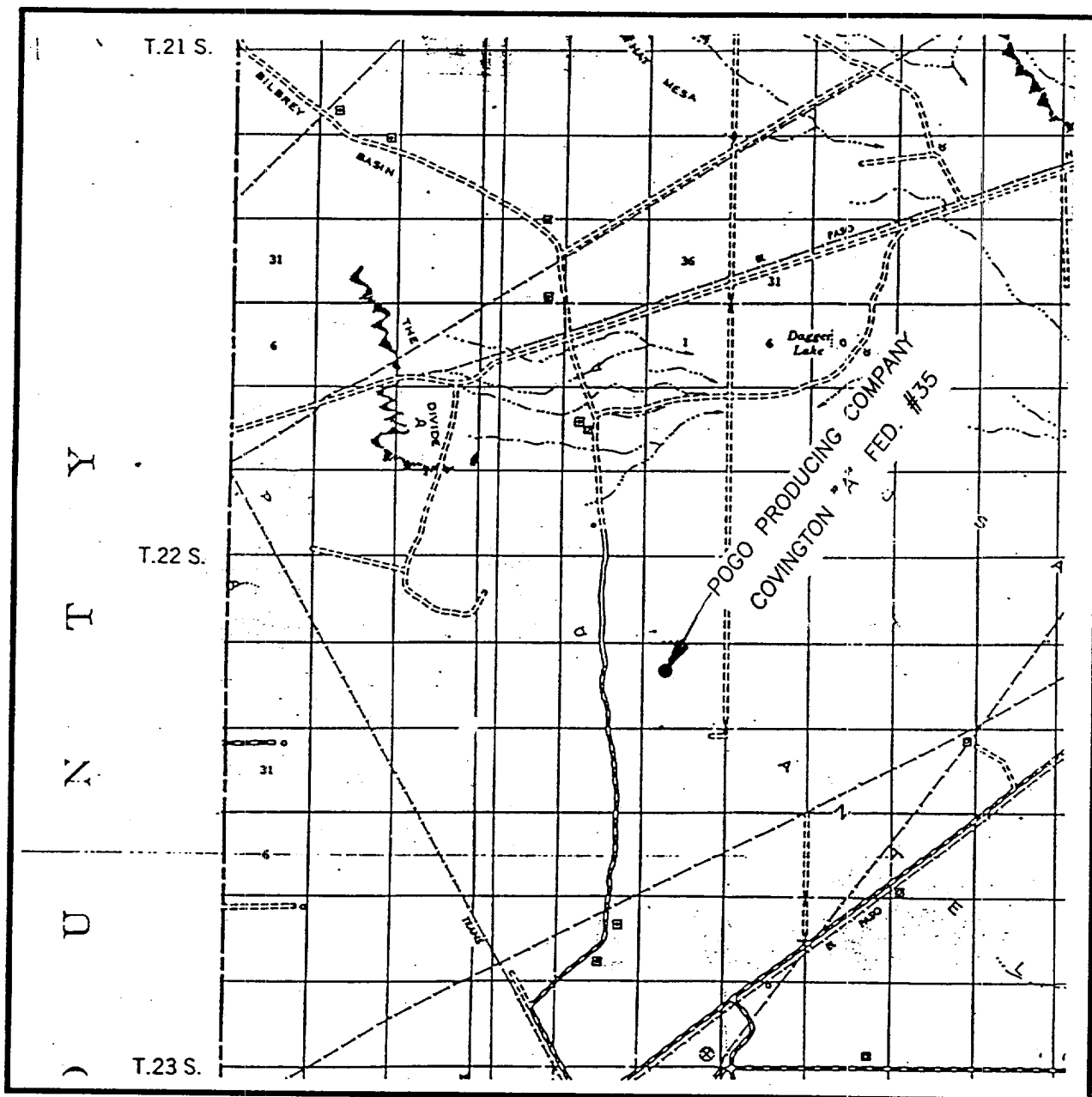
U.S.G.S. TOPOGRAPHIC MAP

BOOTLEG RIDGE, & TIP TOP WELLS, N.M.

JOHN WEST ENGINEERING
HOBBS, NEW MEXICO

(505) 393-3117

VICINITY MAP



SCALE: 1" = 2 MILES

SEC. 25 TWP. 22-S RGE. 32-E

SURVEY N.M.P.M.

COUNTY LEA

DESCRIPTION 1250' FNL & 1075' FWL

ELEVATION 3762'

OPERATOR POGO PRODUCING COMPANY

LEASE COVINGTON "A" FED.

JOHN WEST ENGINEERING
HOBBS, NEW MEXICO

(505) 393-3117

APPLICATION TO DRILL

POGO PRODUCING COMPANY
 COVINGTON "A" FEDERAL #35
 UNIT "D" SECTION 25
 T22S-R33E LEA CO. N.M.

In response to questions asked under Section II B of Bulletin NTL-6 the following information is provided for your consideration:

1. Location: 1075' FWL & 1250' FNL SEC. 25 T22S-R32E LEA CO.

2. Elevation above sea level: 3762' GR.

3. Geologic name of surface formation: Quaternary Aeolian Deposits.

4. Drilling tools and associated equipment: Conventional rotary drilling rig using fluid as a circulating medium for solids removal.

5. Proposed drilling depth: 9100'

6. Estimated tops of geological markers:

Rustler Anhydrite	850'	Brushy Canyon	7400'
Delaware Lime	4800'	Bone Spring	8800'
Cherry Canyon	6100'		

7. Possible mineral bearing formation:

Delaware Oil

Bone Spring Oil

8. Casing program:

Hole size	Interval	OD of casing	Weight	Thread	Collar	Grade
25"	0-40	20"	NA	NA	NA	Conductor
14 3/4"	0-850'	10 3/4"	32.7	8-R	ST&C	H-40
9 7/8"	0-4650'	7 5/8"	26.4	8-R	ST&C	J-55
6 3/4"	0-9100'	4 1/2"	11.6	8-R	LT&C	J-55 N-80

APPLICATION TO DRILL

POGO PRODUCING COMPANY
 COVINGTON "A" FEDERAL #35
 UNIT "D" SECTION 25
 T22S-R33E LEA CO. N.M.

9. Cementing and Setting Depth:

20"	Conductor	Set 40' of 20" conductor and cement to surface with Redi-mix.
10 3/4"	Surface	Set 850' of 10 3/4" 32.7# H-40 ST&C casing. Cement with 750 Sx. of Class "C" cement + additives, circulate cement to surface.
7 5/8"	Intermediate	Set 4650' of 7 5/8" 26.4# J-55 ST&C casing. Cement with 1250 Sx. of Light and Premium cement + additives circulate cement to surface.
4 1/2"	Production	Set 9100' of 4 1/2" 11.6# J-55 & N-80 LT&C casing as follows: 2100' of 11.6# N-80, 6000' of 11.6# J-55 1000' of 11.6# N-80. Cement with 1425 Sx. of cement top of cement 4000'.

10. Pressure Control Equipment: Exhibit "E". A 900 Series 3000 PSI working pressure B.O.P. consisting of a double ram type preventor with a bag type annular preventor. BOP unit will be hydraulically operated. Exhibit "E-1". Choke manifold and closing unit. BOP will be tripped up on 10 3/4" casing and will be operated at least once each 24 Hr. period while drilling and blind rams will be operated when out of hole during trips. Flow sensor, PVT, full opening stabbing valve and upper kelly cock will be utilized. No abnormal pressure or temperature is expected while drilling.

11. Proposed Mud Circulating System:

Depth	Mud Wt.	Visc.	Fluid Loss	Type Mud
40-850'	8.6-8.8	29-34	NC	Fresh water spud mud add paper for seepage control high viscosity sweeps to clean hole.
850-4650'	10.2-10.5	29-36	NC	Brine water using paper to seepage, lime for pH control high viscosity sweeps to clean hole.
4650-9100'	8.6-8.8	29-36	NC	Fresh water, use fresh water Gel for viscosity & paper to control seepage use high viscosity sweeps to clean hole

Sufficient mud materials will be kept on location at all times in order to combat lost circulation, unexpected kicks. In order to run DST'S, open hole logs, and casing the viscosity and water loss may have to be adjusted to meet these needs.

APPLICATION TO DRILL

POGO PRODUCING COMPANY
COVINGTON "A" FEDERAL #35
UNIT "D" SECTION 25
T22S-R33E LEA CO. N.M.

12. Testing, Logging and Coring Program:
- A. Open hole logs: Dual-Induction, SNP-Density, Gamma Ray, Caliper from TD to 4650'.
 - B. Gamma Ray Neutron from 4650' to surface.
 - C. Mud logger on hole from 4650' to TD.
 - D. No cores or DST's are planned at this time.
13. Potential Hazards:
- No abnormal pressures or temperatures are expected. Hydrogen Sulfide gas may be encountered, H₂S detectors will be in place to detect any presence. No lost circulation is expected to occur. All personnel will be familiar with all aspects of safe operation of equipment being used. Estimated BHP 3700 PSI, estimated BHT 145°.
14. Anticipated Starting Date and Duration of Operation:
- Road and location construction will begin after BLM approval of APD. Anticipated spud date as soon as approved. Drilling expected to take 25 - 30 days. If production casing is run an additional 30 days to complete and construct surface facility and place well on production.
15. Other Facets of Operations:
- After running casing, cased hole gamma ray neutron collar logs will be run from total depth over possible pay intervals. The Bone Spring pay will be perforated and stimulated. The well will be swab tested and potentialized as an oil well.

HYDROGEN SULFIDE DRILLING OPERATIONS PLAN

1. All Company and Contract personnel admitted on location must be trained by a qualified H₂S safety instructor to the following:
 - A. Characteristics of H₂S
 - B. Physical effects and hazards
 - C. Proper use of safety equipment and life support systems.
 - D. Principle and operation of H₂S detectors, warning system and briefing areas.
 - E. Evacuation procedure, routes and first aid.
 - F. Proper use of 30 minute pressure demand air pack.
2. H₂S Detection and Alarm Systems
 - A. H₂S detectors and audio alarm system to be located at bell nipple, end of blooie line (mud pit) and on derrick floor or doghouse.
3. Windsock and/or wind streamers
 - A. Windsock at mudpit area should be high enough to be visible.
 - B. Windsock at briefing area should be high enough to be visible.
 - C. There should be a windsock at entrance to location.
4. Condition Flags and Signs
 - A. Warning sign on access road to location.
 - B. Flags to be displayed on sign at entrance to location. Green flag, normal safe condition. Yellow flag indicates potential pressure and danger. Red flag, danger, H₂S present in dangerous concentration. Only emergency personnel admitted to location.
5. Well control equipment
 - A. See exhibit "E"
6. Communication
 - A. While working under masks chalkboards will be used for communication.
 - B. Hand signals will be used where chalk board is inappropriate.
 - C. Two way radio will be used to communicate off location in case of emergency help is required. In most cases cellular telephoned will be available at most drilling foreman's trailer or living quarters.
7. Drillstem Testing
 - A. Exhausts will be watered.
 - B. Flare line will be equipped with an electric ignitor or a propane pilot light in case gas reaches the surface.
 - C. If location is near any dwelling a closed D.S.T. will be performed.

HYDROGEN SULFIDE DRILLING OPERATIONS PLAN

8. Drilling contractor supervisor will be required to be familiar with the effects H_2S has on tubular goods and other mechanical equipment.
9. If H_2S is encountered, mud system will be altered if necessary to maintain control of formation. A mud gas separator will be brought into service along with H_2S scavengers if necessary.

SURFACE USE PLAN

POGO PRODUCING COMPANY
COVINGTON "A" FEDERAL #35
UNIT "D" SECTION 25
T22S-R33E LEA CO. N.M.

1. EXISTING ROADS. Area map, Exhibit "B" is a reproduction of the New Mexico General Hi-way Co. Map. Exhibit "C" is a reproduction of a topographic map. Existing roads and proposed roads are shown on each exhibit. All roads will be maintained in a condition equal to or better than existed prior to start of construction.
 - A. Exhibit "A" shows the proposed development well as staked.
 - B. From Hobbs New Mexico take U.S. High-Way 62-180 West toward Carlsbad NM. go 38 miles to Co. Road C-29, turn South go 14 miles to Mills Ranch Road turn East and follow well traveled road for 7.2 miles, turn South go 1.3 miles turn East go .65 miles turn South go 350' to location.
 - C. Pipelines that are necessary for oil, gas & water transportation to central battery will be laid along existing R-O-W or along road R-O-W. Powerlines necessary to furnish power to produce this lease will be constructed along road or existing R-O-W.
2. PLANNED ACCESS ROADS - Approximately 350' of new road will be constructed.
 - A. the access road will be crowned and ditched to a 12'00" wide travel surface with a 40' right-of-way.
 - B. Gradient on all roads will be less than 5.00%.
 - C. No turnouts will be necessary.
 - D. If needed, road will be surfaced with a minimum of 4" of caliche. This material will be obtained from a local source.
 - E. Centerline for the new access road has been flagged. Earthwork will be as required by field conditions.
 - F. Culverts in the access road will not be used. The road will be constructed to utilize low water crossings for drainage as required by the topography.
3. LOCATION OF EXISTING WELLS IN A ONE-MILE RADIUS EXHIBIT "A-1"
 - A. Water wells - One approximately 1.75 miles Northwest.
 - B. Disposal wells - None known
 - C. Drilling wells - None known
 - D. Producing wells - As shown on Exhibit "A-1"
 - E. Abandoned wells - As shown on Exhibit "A-1"

POGO PRODUCING COMPANY
COVINGTON "A" FEDERAL #35
UNIT "D" SECTION 25
T22S-R33E LEA CO. N.M.

4. If on completion this well is a producer Pogo Producing Company will furnish plats showing the production and storage facilities.

5. LOCATION AND TYPE OF WATER SUPPLY:

Water will be purchased locally from a commercial source and trucked over the access roads or piped in flexible lines laid on top of the ground.

6. SOURCE OF CONSTRUCTION MATERIAL:

If possible construction will be obtained from the excavation of drill site, if additional material is needed it will be purchased from a local source and transported over the access route as shown on Exhibit "C".

7. METHODS OF HANDLING WASTE MATERIAL:

- A. Drill cuttings will be disposed of in the reserve pit.
- B. All trash, junk and other waste material will be contained in trash cages or bins to prevent scattering. When the job is completed all contents will be removed and disposed of in a approved sanitary land fill.
- C. Salts remaining after completion of well will be picked up by supplier including broken sacks.
- D. Sewage from living quarters will drain into holes with a minium depth of 10'. These holes will be covered during drilling and will be back filled upon completion. A Porta-John will be provided for the rig crews. This equipment will be properly maintained during the drilling operations and removed upon completion of the well.
- E. Remaining drilling fluids will be allowed to evaporate in the reserve pit until the pit is dry enough for breaking out. In the event that drilling fluids do not evaporate in a reasonable time they will be hauled off by transports and be disposed of at a state approved disposal facility. Later pits will be broken out to speed drying. Water produced during testing will be put in reserve pits. Any oil or condensate produced will be stored in test tanks until sold and hauled from the site.

8. ANCILLARY FACILITIES:

- A. No camps or airstrips to be constructed.

SURFACE USE PLAN

POGO PRODUCING COMPANY
COVINGTON "A" FEDERAL #35
UNIT "D" SECTION 25
T22S-R33E LEA CO. N.M.

9. WELL SITE LAYOUT

- A. Exhibit "D" shows the proposed well site layout.
- B. This exhibit indicated proposed location of reserve and sump pits and living facilities.
- C. Mud pits in the active circulating system will be steel pits and the reserve pit is proposed to be unlined, unless subsurface condition encountered during pit construction indicate that lining is needed for lateral containment of fluids.
- D. If needed, the reserve pit is to be lined with polyethylene. The pit liner will be 6 mils thick. Pit liner will extend a minimum 2'00" over the reserve pits dikes where the liner will be anchored down.
- E. The reserve pit will be fenced on three sides with four strands of barbed wire during drilling and completion phases. The fourth side will be fenced after all drilling operations have ceased. If the well is a producer, the reserve pit fence will be torn down. The reserve pit and those areas of the location not essential to production facilities will be reclaimed and seeded per BLM requirements.

10. PLANS FOR RESTORATION OF SURFACE

Rehabilitation of the location and reserve pit will start in a timely manner after all drilling operations cease. The type of reclamation will depend on whether the well is a producer or a dry hole.

However, in either event, the reserve pit will be allowed to dry properly, and fluid removed and disposed of in accordance with Article 7.B as previously noted. The pit area will then be leveled and contoured to conform to the original and surrounding area. Drainage systems, if any, will be reshaped to the original configuration with provisions made to alleviate erosion. These may need to be modified in certain circumstances to prevent inundation of the location's pad and surface facilities. After the area has been shaped and contoured, topsoil from the spoil pile will be placed over the disturbed area to the extent possible. Revegetation procedures will comply with BLM standards.

If the well is a dry hole, the pad and road area will be contoured to match the existing terrain. Topsoil will be spread to the extent possible. Revegetation will comply with BLM standards.

Should the well be a producer, the previously noted procedures will apply to those areas which are not required for production facilities.

POGO PRODUCING COMPANY
 COVINGTON "A" FEDERAL #35
 UNIT "D" SECTION 25
 T22S-R33E LEA CO. N.M.

11. OTHER INFORMATION

- A. Topography consists of sand dunes with a slight regional dip to the West. Soil supports native grasses mesquites and miniature oaks.
- B. The surface and minerals are owned by THE BUREAU OF LAND MANAGEMENT THE U.S. DEPARTMENT OF INTERIOR. The surface is leased out to ranchers for grazing of livestock.
- C. An Archeological survey will be conducted and copies will be sent to the BLM., Carlsbad Resource Area in Carlsbad, N.M.
- D. There are no dwellings or habitation within three miles of this location.

12. OPERATOR'S REPRESENTATIVE

Field representative to contact regarding compliance with surface use plan:

Before Construction:

Tierra Exploration Inc.
 P.O. Box 2188
 Hobbs, NM 88241
 Office Phone: 505-392-2112
 Joe T. Janica

During and after Construction

Pogo Producing Company
 P.O. Box 10340
 Midland, Tx 79702-7340
 Office Phone: 915-685-8140
 Mr. Richard Wright

13. CERTIFICATION: I hereby certify that I, or persons under my direct supervision, have inspected the proposed drill site and access route; that I am familiar with the conditions which currently exist; that the statements made in this plan are to the best of my knowledge, are true and correct; and that the work associated with the operations proposed herein will be performed by Pogo Producing Company, its' Contractors/ Subcontractors in conformity with this plan and the terms and conditions underwhich it is approved. This statement is subject to the provision of 18 U.S.C. 1001 for the filing of a false statement.

NAME: Joe T. Janica
 TITLE: Agent
 DATE: 06/15/98

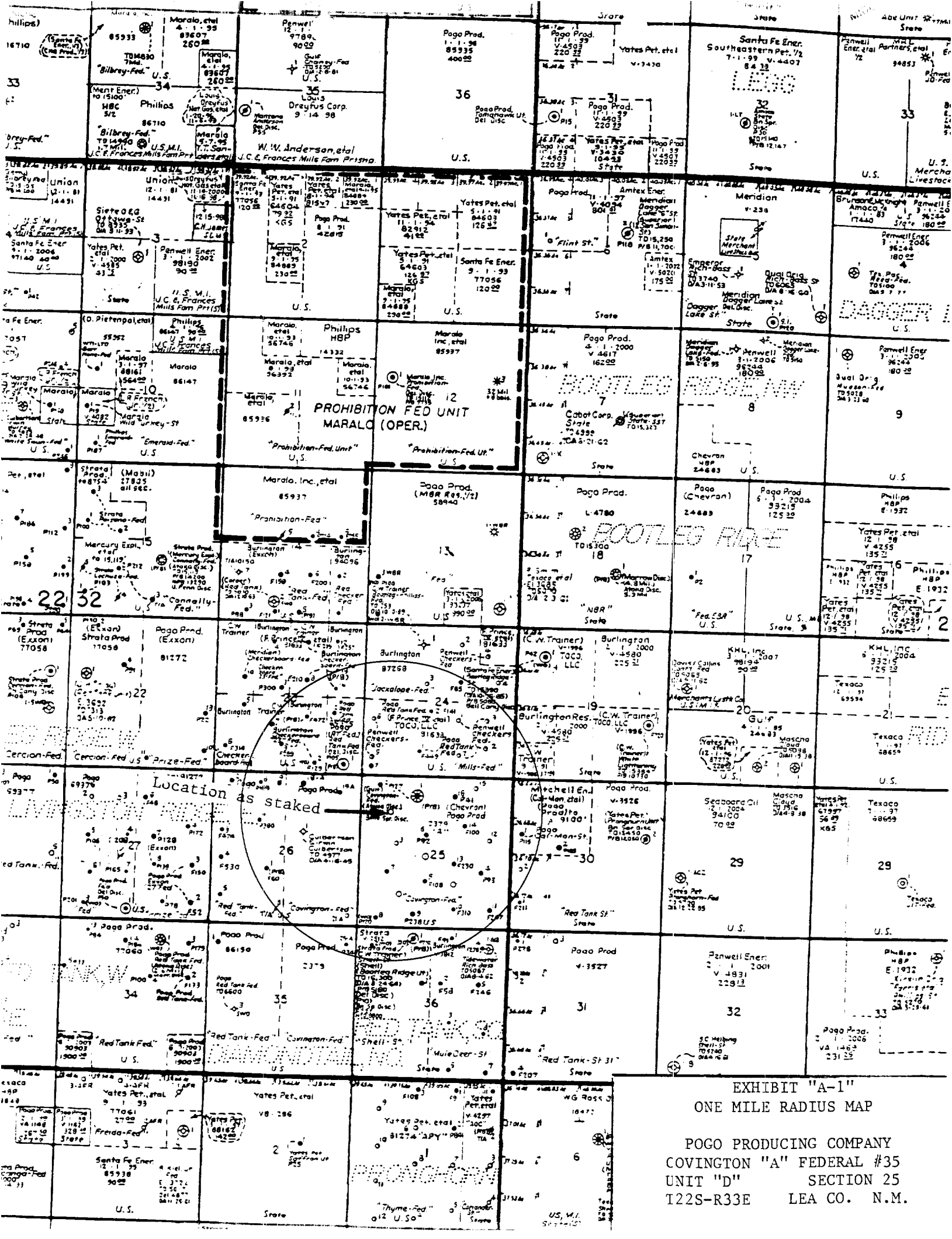
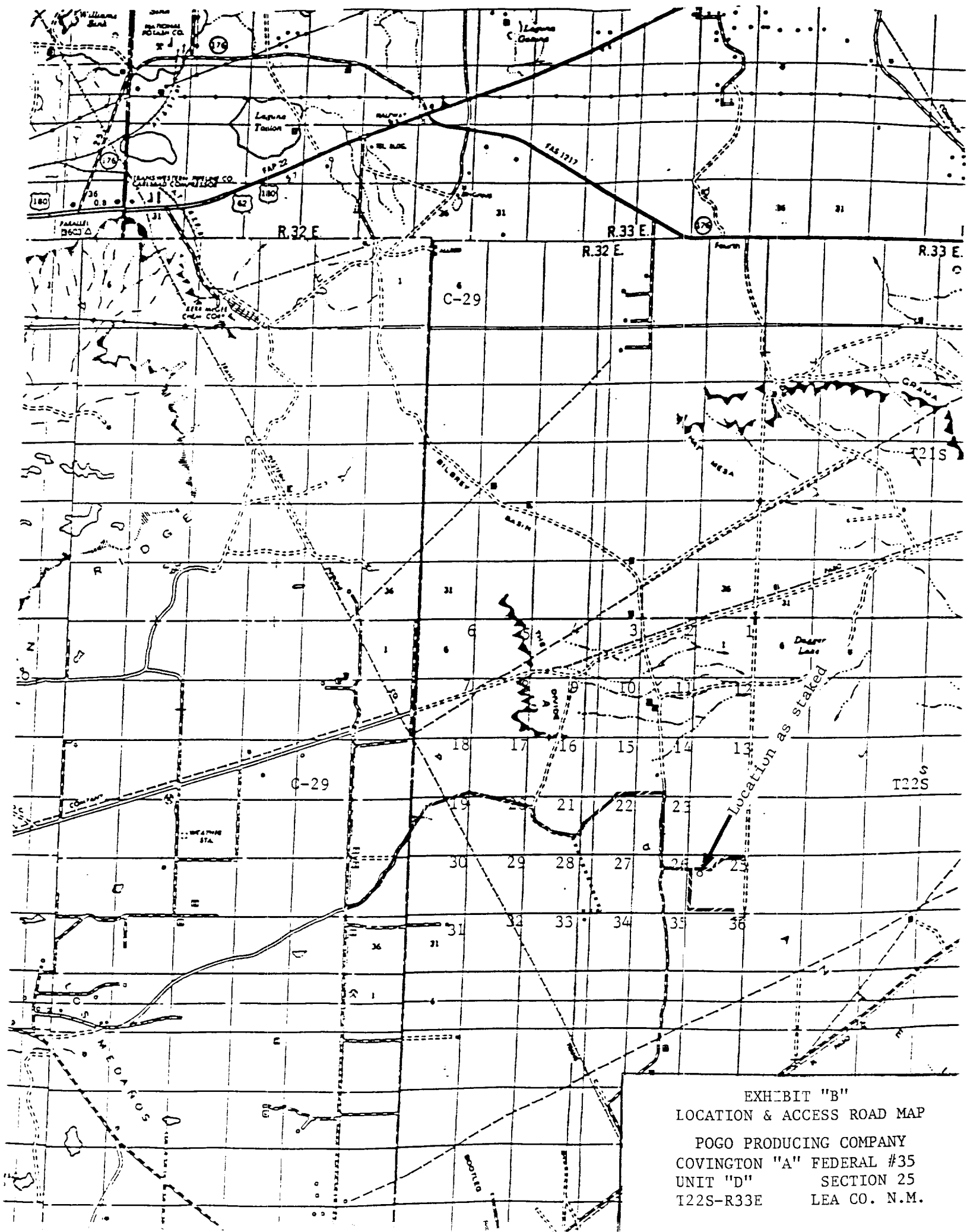


EXHIBIT "A-1"
ONE MILE RADIUS MAP

POGO PRODUCING COMPANY
COVINGTON "A" FEDERAL #35
UNIT "D" SECTION 25
T22S-R33E LEA CO. N.M.



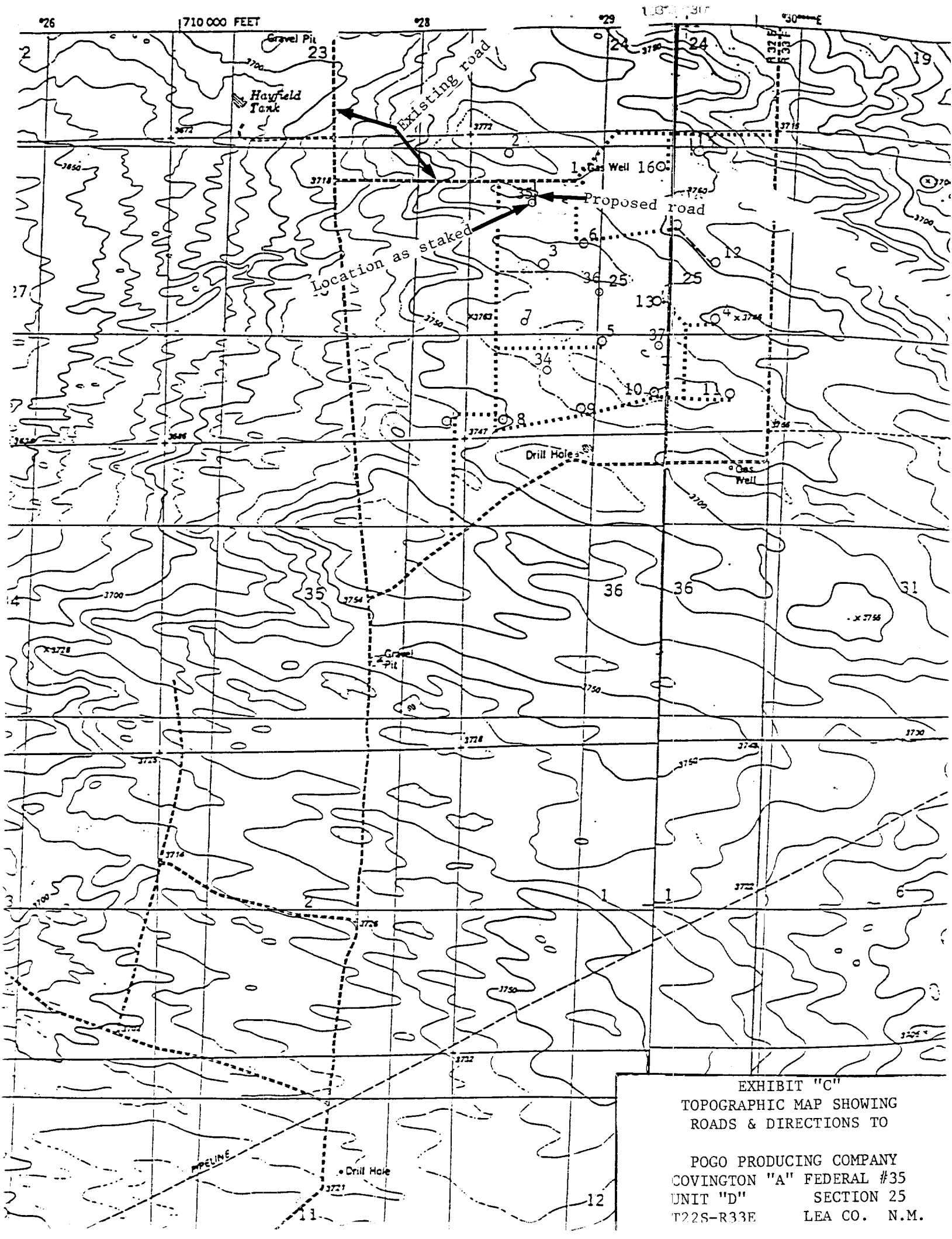
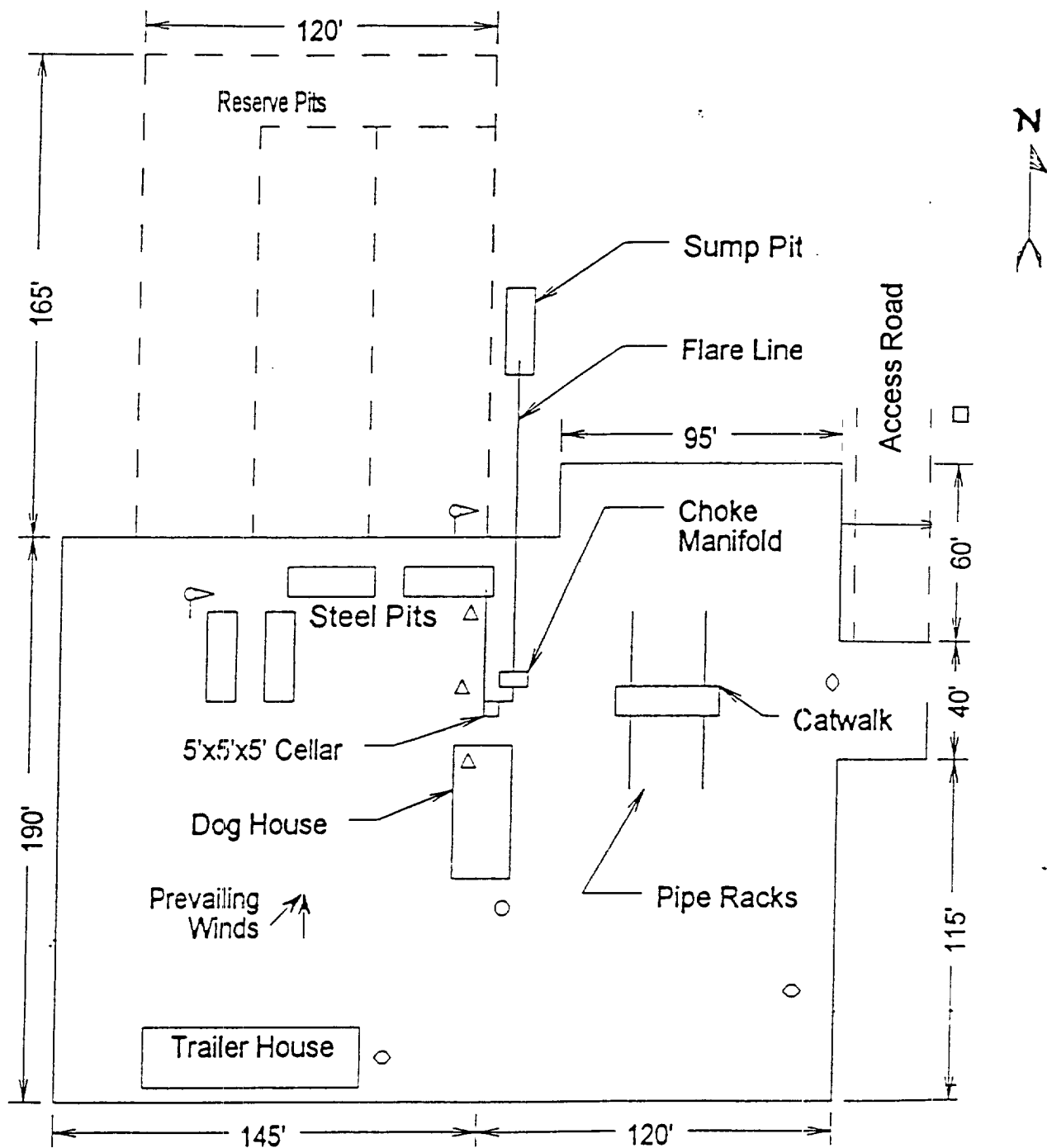


EXHIBIT "C"
TOPOGRAPHIC MAP SHOWING
ROADS & DIRECTIONS TO

POGO PRODUCING COMPANY
COVINGTON "A" FEDERAL #35
UNIT "D" SECTION 25
T22S-R33E LEA CO. N.M.



- Wind Direction Indicators
(wind sock or streamers)
- △ H2S Monitors
(alarms at bell nipple and shale shaker)
- Briefing Areas
- Remote BOP Closing Unit
- Sign and Condition Flags

EXHIBIT "D"
RIG LAYOUT PLAT

POGO PRODUCING COMPANY
COVINGTON "A" FEDERAL #35
UNIT "D" SECTION 25
R22S-R33E LEA CO. N.M.

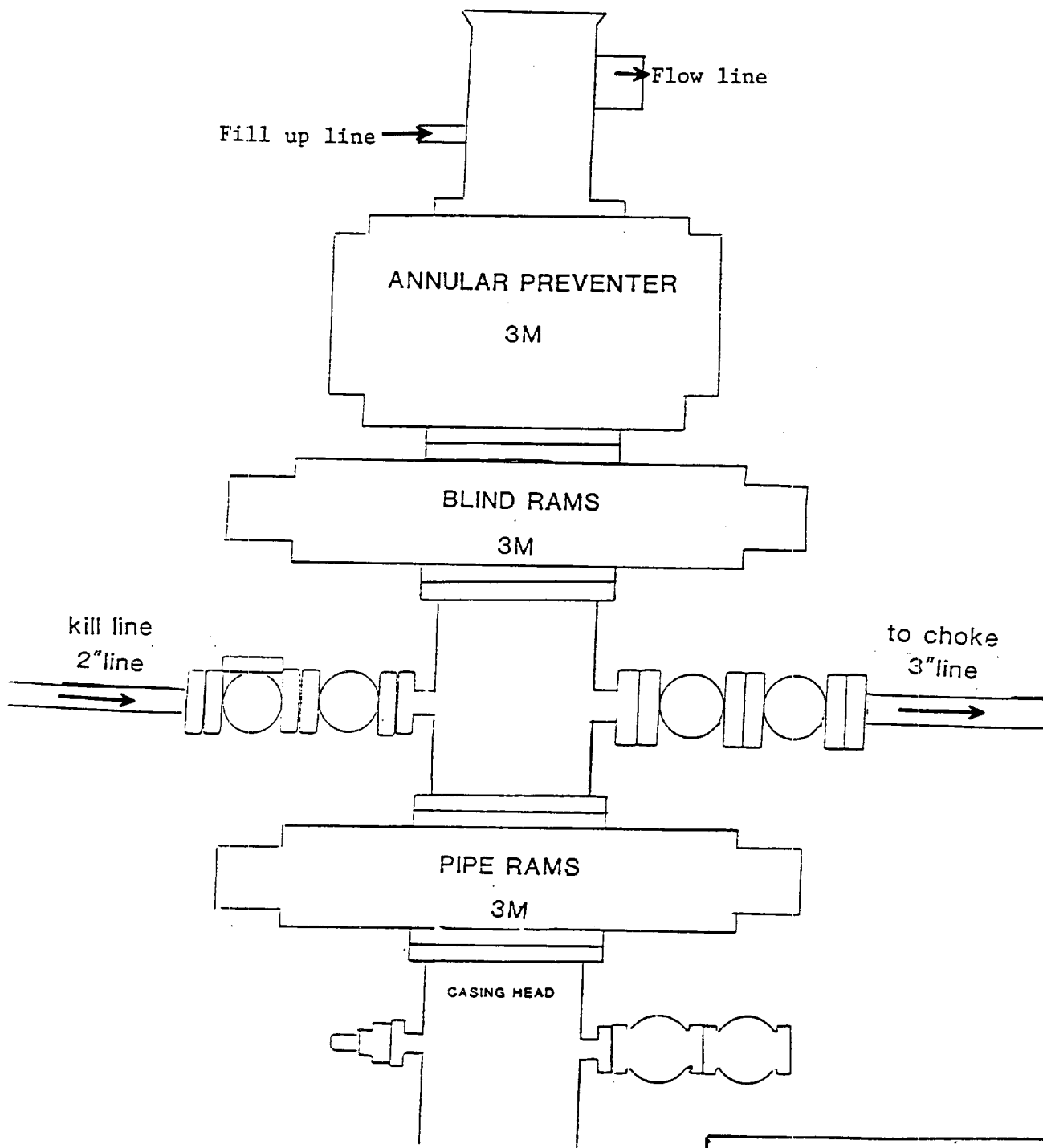
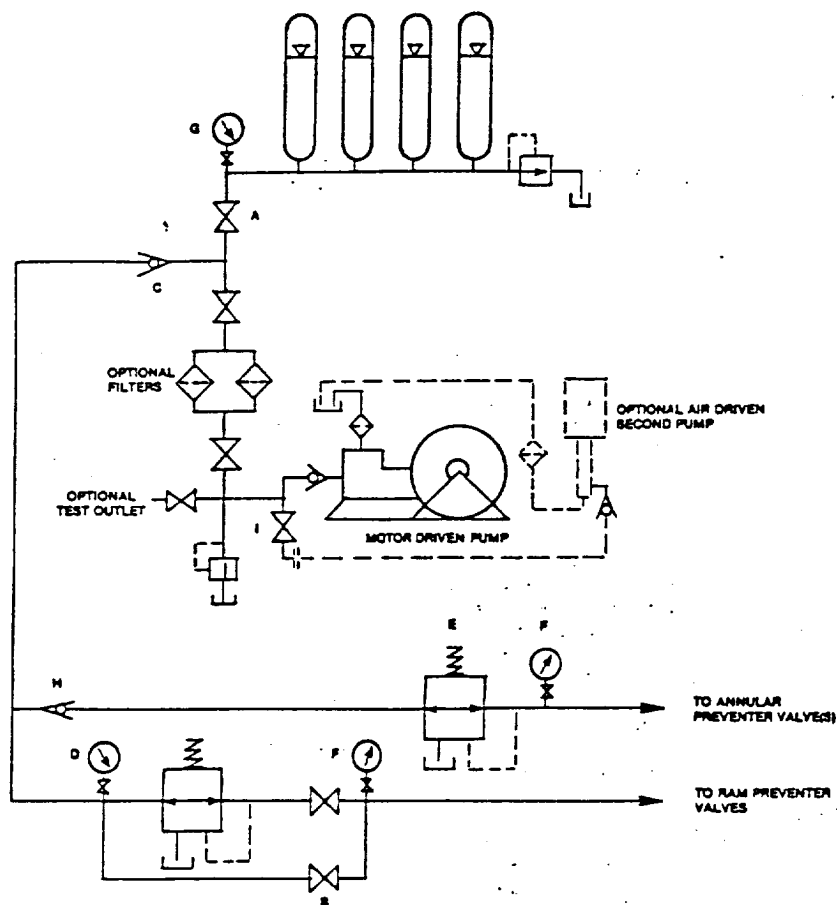


EXHIBIT "E"
B.O.P. SKETCH TO BE USED ON

POGO PRODUCING COMPANY
COVINGTON "A" FEDERAL #35
UNIT "D" SECTION 25
T22S-R33E LEA CO. N.M.



HAND AJUSTABLE CHOKE

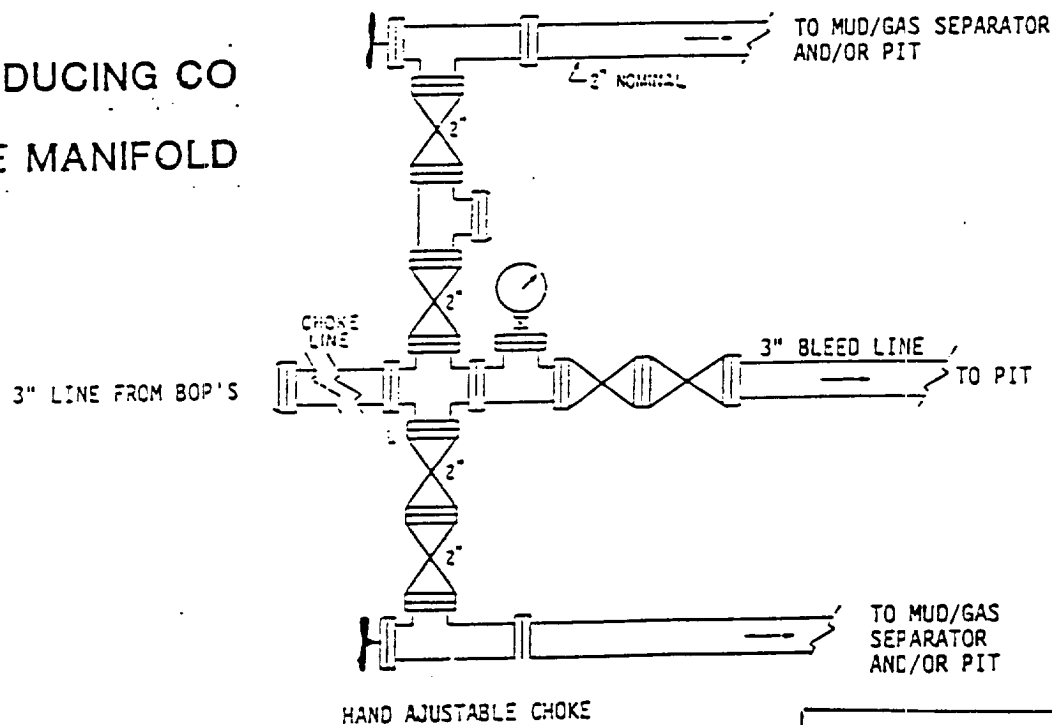


EXHIBIT "1-E"
CHOKE MANIFOLD & CLOSING UNIT

POGO PRODUCING COMPANY
COVINGTON "A" FEDERAL #35
UNIT "D" SECTION 25
T22S-R33E LEA CO. N.M.

ABOVE DATE DOES NOT
INDICATE WHEN
CONFIDENTIAL LOGS
WILL BE RELEASED

ELF 12/16/99