

7. Auxiliary Equipment:

- a) Upper kelly cock valve with handle available.
- b) Lower kelly cock valve with handle available.
- c) Safety valves and subs to fit all drill string connections in use.
- d) Inside BOP or float sub available.
- e) Wear ring in casing head
- f) No floats at bit
- g) Monitoring of mud system will be electronic/ mechanical below 9,500'.

8. Testing Logging and Coring Program:

Drill Stem Tests will only made when samples, drilling time and other data indicate a test is warranted.

It is planned that electric logs will include Gamma Ray-CNL, FDC logs and dual laterologs.

Note: A gamma ray log will be run over the surface casing from its base to the ground surface.

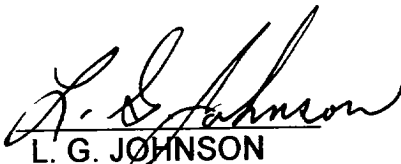
No coring is planned.

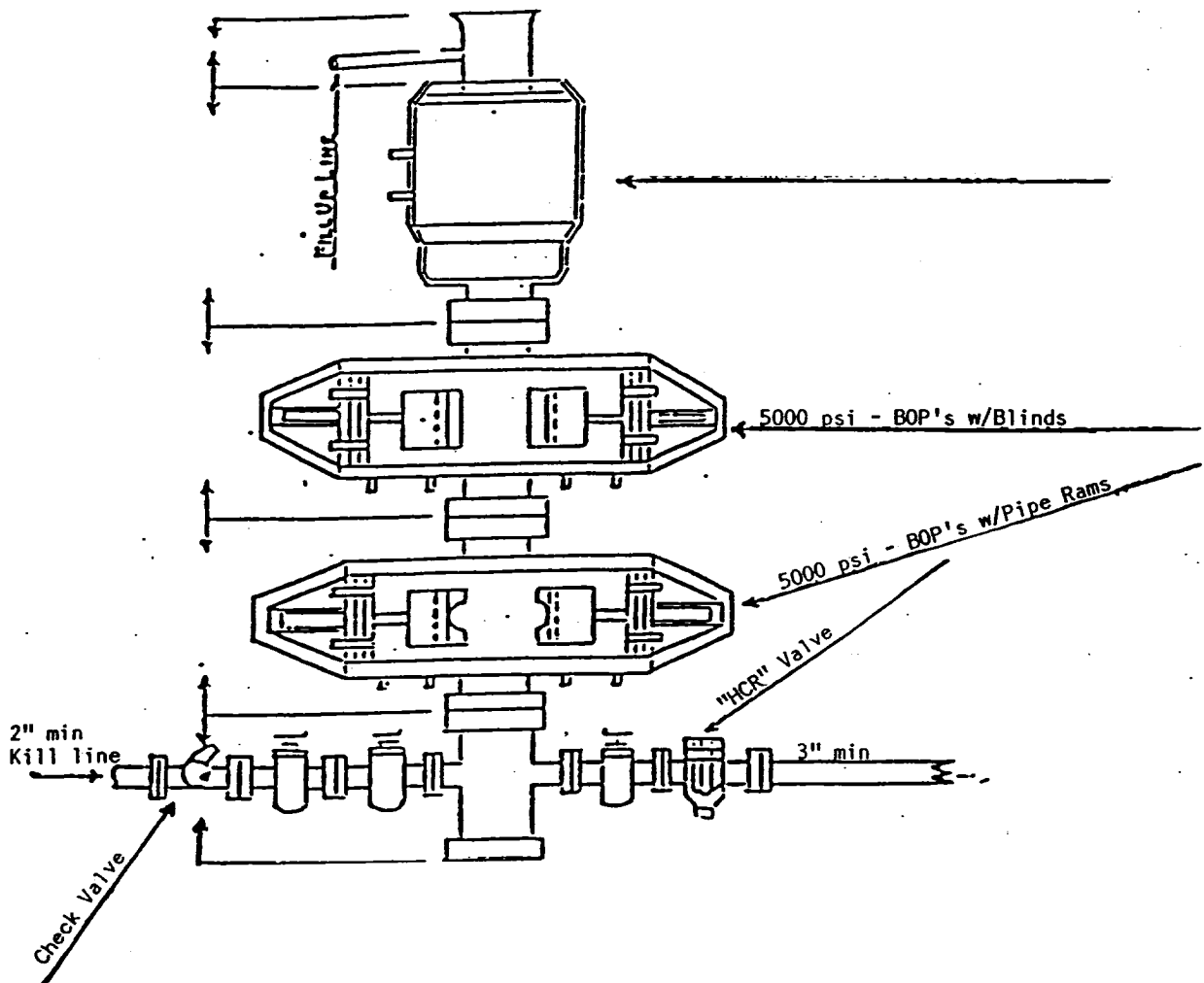
9. Abnormal pressure is anticipated in the Atoka and Morrow. BHP=7800 psi (maximum)

10. Anticipated Starting Date:

It is planned to commence drilling operations, upon approval of our BLM permit to last a period of 85 days.

Contact L. G. JOHNSON at 915-682-3753
With any questions concerning the Drilling Plan.

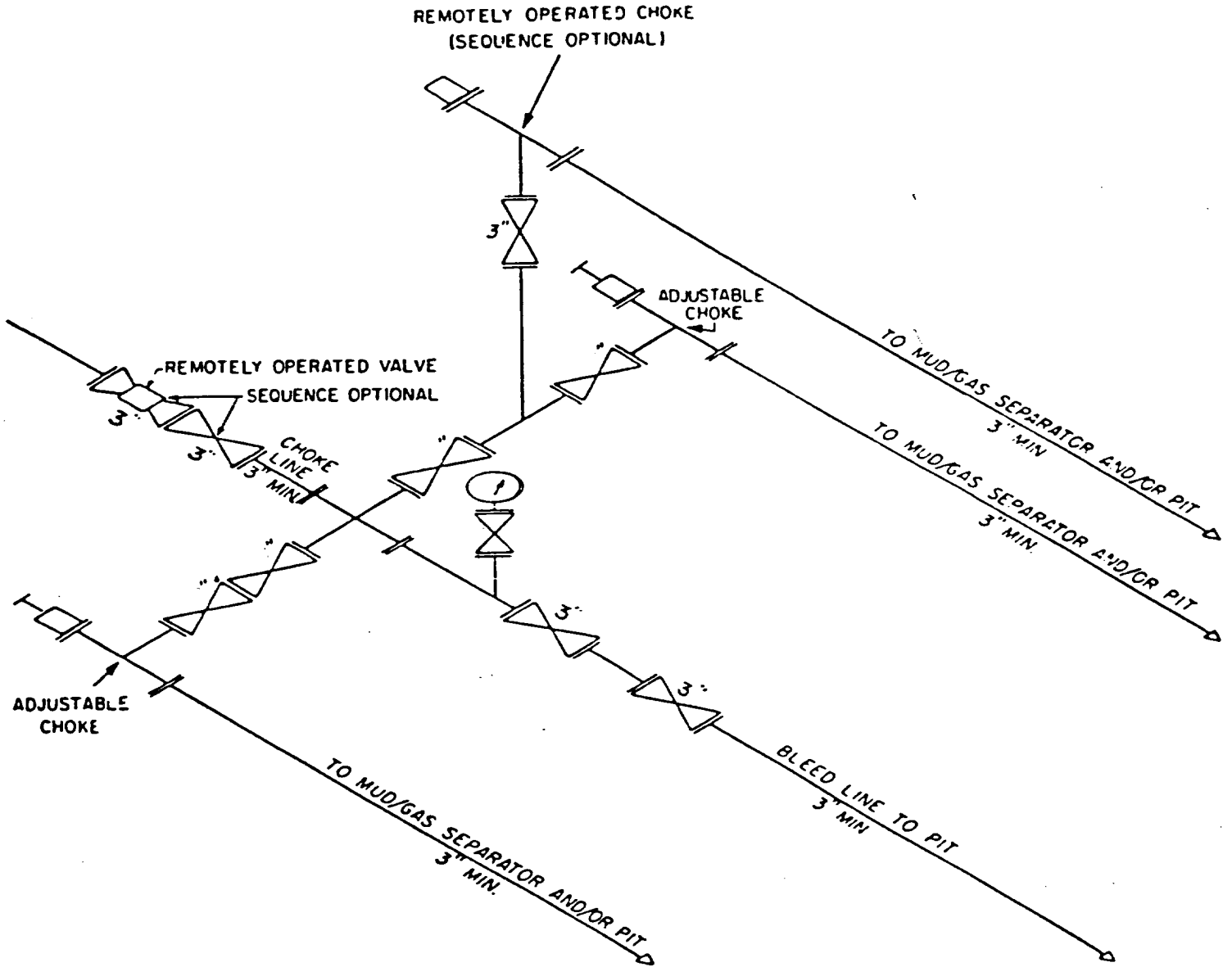

L. G. JOHNSON
Drilling Superintendent



BOP HOOK UP AFTER SETTING SURFACE

BTA OIL PRODUCERS
 #3, Grama Ridge Fed, 8817 JV-P
 660' FSL & 660' FWL
 Sec. 9, T22S, R34E
 Lea County, NM

5 M CHOKE MANIFOLD EQUIPMENT



CHOKE MANIFOLD EQUIPMENT — CONFIGURATION MAY VARY

BTA OIL PRODUCERS
#3 Grama Ridge Fed, 8817 JV-P
660' FSL & 660" FWL
Sec. 9, T22S, R34E
Lea County, NM