

DISTRICT I  
P.O. Box 1980, Hobbs, NM 88241-1980

DISTRICT II  
P.O. Drawer 80, Artesia, NM 88211-0719

DISTRICT III  
1000 Rio Brazos Rd., Artesia, NM 87410

DISTRICT IV  
P.O. Box 2088, Santa Fe, NM 87504-2088

State of New Mexico

Energy, Minerals and Natural Resources Department

Form C-102  
Revised February 10, 1994  
Submit to Appropriate District Office  
State Lease - 4 Copies  
Fee Lease - 3 Copies

OIL CONSERVATION DIVISION

P.O. Box 2088  
Santa Fe, New Mexico 87504-2088

☐ AMENDED REPORT

WELL LOCATION AND ACREAGE DEDICATION PLAT

API Number 30-025-35008	Pool Code 57000	SKAGGS Drinkard	Pool Name
Property Code 005222	Property Name SKAGGS "B" ACC. 1		Well Number 7
OGRD No. 012024	Operator Name JOHN H. HENDRIX CORPORATON		Elevation 3593

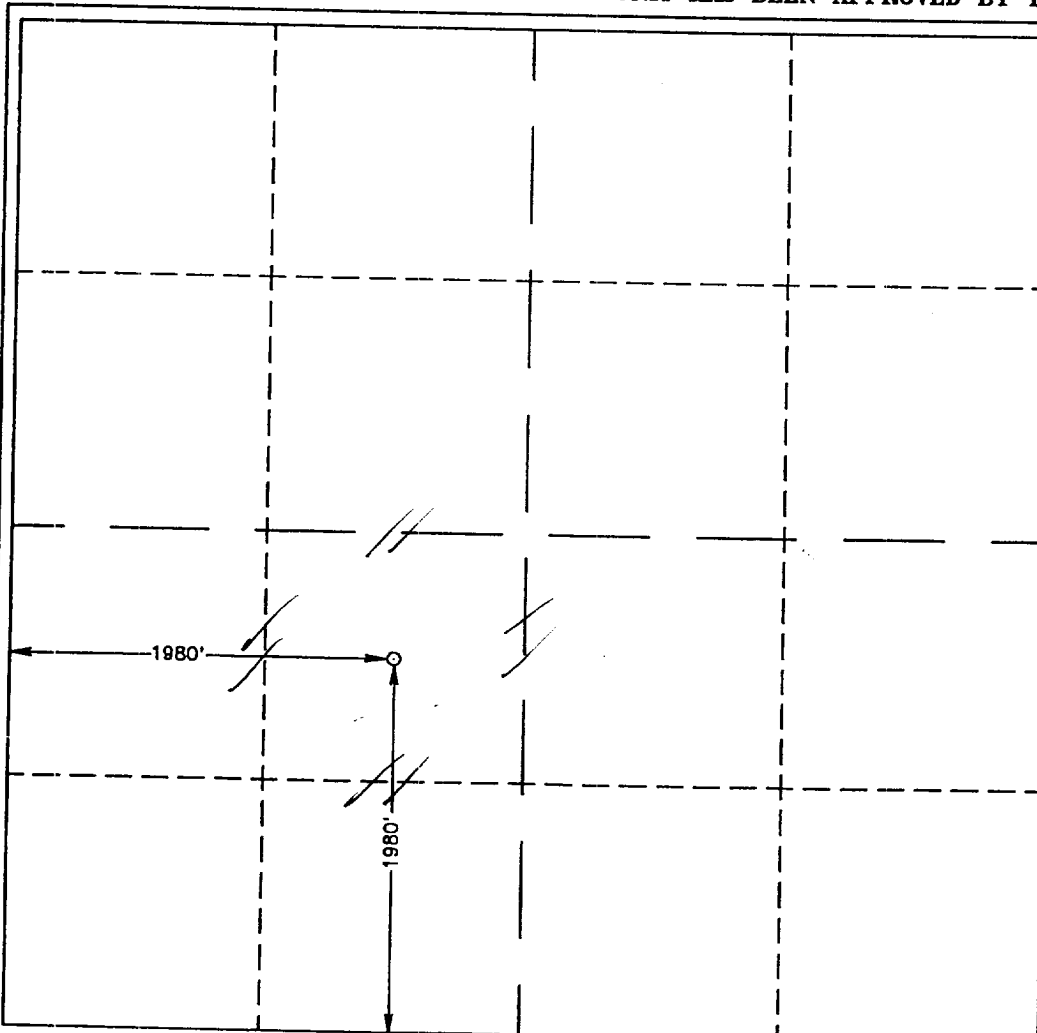
Surface Location

UL or lot No. K	Section 11	Township 20 S	Range 37 E	Lot Idn	Feet from the 1980	North/South line SOUTH	Feet from the 1980	East/West line WEST	County LEA
--------------------	---------------	------------------	---------------	---------	-----------------------	---------------------------	-----------------------	------------------------	---------------

Bottom Hole Location If Different From Surface

UL or lot No.	Section	Township	Range	Lot Idn	Feet from the	North/South line	Feet from the	East/West line	County
Dedicated Acres 80-40	Joint or Infill	Consolidation Code	Order No.						

NO ALLOWABLE WILL BE ASSIGNED TO THIS COMPLETION UNTIL ALL INTERESTS HAVE BEEN CONSOLIDATED  
OR A NON-STANDARD UNIT HAS BEEN APPROVED BY THE DIVISION



OPERATOR CERTIFICATION

I hereby certify the the information  
contained herein is true and complete to the  
best of my knowledge and belief.

*Ronnie H. Westbrook*  
Signature

Ronnie H. Westbrook  
Printed Name

Vice President  
Title

8/7/00  
Date

SURVEYOR CERTIFICATION

I hereby certify that the well location shown  
on this plat was plotted from field notes of  
actual surveys made by me or under my  
supervision, and that the same is true and  
correct to the best of my belief.

JANUARY 14, 2000

Date Surveyed JLP

Signature of Surveyor

Professional Surveyor

NEW MEXICO

3239 01-21200

P.O. Num. 00-11-0052

Certificate No. RONALD S. EDSON, 3239

GARY C. EDSON, 12641

WILLIAM McDONALD, 12185