

DISTRICT I
P.O. Box 1980, Hobbs, NM 88241-1980

State of New Mexico

Energy, Minerals and Natural Resources Department

Form C-102

Revised February 10, 1994

Submit to Appropriate District Office

State Lease - 4 Copies

Fed Lease - 3 Copies

DISTRICT II
P.O. Drawer DD, Artesia, NM 88211-0719

DISTRICT III
1000 Rio Brazos Rd., Artesia, NM 87410

DISTRICT IV
P.O. Box 2088, Santa Fe, NM 87504-2088

OIL CONSERVATION DIVISION

P.O. Box 2088

Santa Fe, New Mexico 87504-2088

NOV 27 2000

☐ AMENDED REPORT

WELL LOCATION AND ACREAGE DEDICATION PLAT

API Number 30-025-35387	Pool Code 33820	Pool Name JALMAT (TN-YT-7R)
Property Code 25185	Property Name CLOSSON "B" FEDERAL	Well Number 41
OGRID No. 184860	Operator Name MELROSE OPERATING COMPANY	Elevation 3560

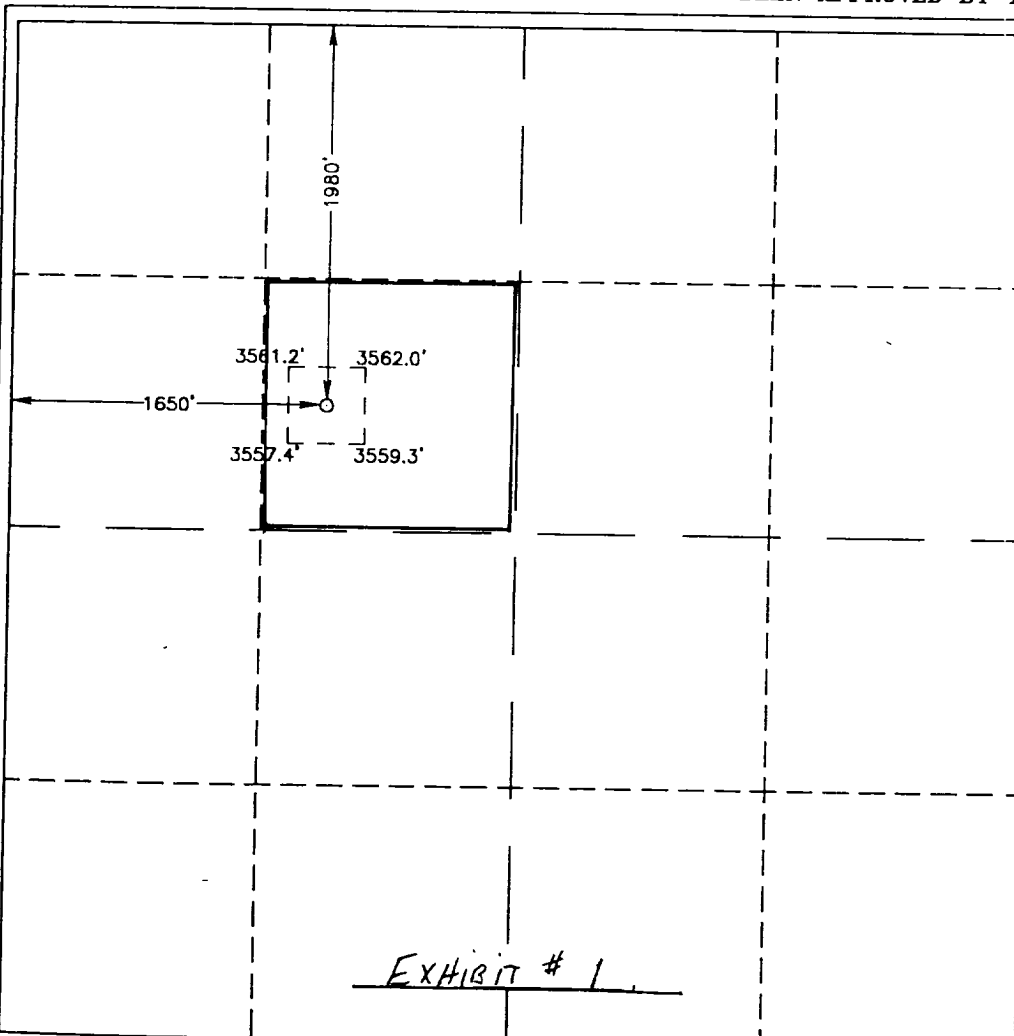
Surface Location

UL or lot No. F	Section 19	Township 22 S	Range 36 E	Lot Idn	Feet from the 1980	North/South line NORTH	Feet from the 1650	East/West line WEST	County LEA
--------------------	---------------	------------------	---------------	---------	-----------------------	---------------------------	-----------------------	------------------------	---------------

Bottom Hole Location If Different From Surface

UL or lot No.	Section	Township	Range	Lot Idn	Feet from the	North/South line	Feet from the	East/West line	County
Dedicated Acres 40	Joint or Infill	Consolidation Code	Order No.						

NO ALLOWABLE WILL BE ASSIGNED TO THIS COMPLETION UNTIL ALL INTERESTS HAVE BEEN CONSOLIDATED
OR A NON-STANDARD UNIT HAS BEEN APPROVED BY THE DIVISION



OPERATOR CERTIFICATION

I hereby certify the the information contained herein is true and complete to the best of my knowledge and belief.

Ann E. Ritchie
Signature

ANN E. RITCHIE
Printed Name

AGENT
Title

12/08/00
Date

SURVEYOR CERTIFICATION

I hereby certify that the well location shown on this plat was plotted from field notes of actual surveys made by me or under my supervision and that the same is true and correct to the best of my belief.

NOVEMBER 17, 2000

Date Surveyed JLP

Signature & Seal of
Professional Surveyor

W. O. Eidson 11/21/00
W.O. Num. 00-11-1490

Certificate No. RONALD J. EIDSON, 3239
GARY G. EIDSON, 12841