

District I
PO Box 1980, Hobbs, N.M. 88241-1980
District II
P.O. Drawer DD, Artesia, N.M. 88211-0719
District III
1000 Rio Brazos Rd., Aztec, N.M. 87410
District IV
P.O. Box 2088, Santa Fe, N.M. 87504-2088

State of New Mexico
Energy, Minerals & Natural Resources Department

OIL CONSERVATION DIVISION
PO Box 2088
Santa Fe, NM 87504-2088

Form C-101
Revised February 10, 1994
Instructions on back
Submit to Appropriate District Office
State Lease - 6 Copies
Fee lease - 5 Copies

☐ AMENDED REPORT

APPLICATION FOR PERMIT TO DRILL, RE-ENTER, DEEPEN, PLUGBACK, OR ADD A ZONE

¹ Operator Name and Address Melrose Operating Co. c/o P.O. Box 953, Midland, TX 79702		² OGRID Number 184860
		³ API Number 30-025-35430
⁴ Property Code 25191	⁵ Property Name Jalmat Field Yates Sand Unit	⁶ Well No. 174

7 Surface Location

UL or Lot No.	Section	Township	Range	Lot Idn	Feet from the	North/South line	Feet from the	East/West line	County
C	11	22S	35E		1310	North	1330	West	Lea

8. Proposed Bottom Hole Location If Different From Surface

UL or Lot No.	Section	Township	Range	Lot Idn	Feet from the	North/South line	Feet from the	East/West line	County

9. Proposed Pool 1

Jalmat, Tansill, Yates, Seven Rivers

10. Proposed Pool 2

¹¹ Work Type Code N	¹² Well Type Code O	¹³ Cable/Rotary R	¹⁴ Lease Type Code S	¹⁵ Ground Level Elevation 3613'
¹⁶ Multiple No	¹⁷ Proposed Depth 4200'	¹⁸ Formation Yates	¹⁹ Contractor United Drlg.	²⁰ Spud Date 3-13-01

21. Proposed Casing and Cement Program

Hole Size	Casing Size	Casing weight/foot	Setting Depth	Sacks of Cement	Estimated TOC
12 1/4"	8 5/8"	24#	350'	250 sx	Surface
7 7/8"	5 1/2"	15.5#	4200'	2000 sx	Surface

22. Describe the proposed program. If this is to DEEPEN or PLUG BACK give the data on the present productive zone and proposed new productive zone. Describe the blowout prevention program, if any. Use additional sheets if necessary.

Propose to drill 12 1/4" hole to 350', set 8 5/8" csg., cement to surface. RU BOPs. Drill 7 7/8" hole to 4200, set 5 1/2" csg, cement to surface, RD BOPs & rotary. Perforate Yates & frac. Place well on test.

Permit Expires 1 Year From Approval
Date Unless Drilling Underway

23. I hereby certify that the information given above is true and complete to the best of my knowledge and belief.

Signature:

Printed Name:

Ann E. Ritchie 2-23-01

Title:

Regulatory Agent 915 684-6381

Date:

2-23-01

Phone:

↑

OIL CONSERVATION DIVISION

Approved by:

Title:

Approval Date:

Expiration Date:

Conditions of Approval:

State of New Mexico

DISTRICT I

P.O. Box 1880, Hobbs, NM 88241-1880

Energy, Minerals and Natural Resources Department

Form C-102

Revised February 10, 1994

Submit to Appropriate District Office

State Lease - 4 Copies

Fee Lease - 3 Copies

DISTRICT II

P.O. Drawer 80, Artesia, NM 88211-0719

OIL CONSERVATION DIVISION

P.O. Box 2088

Santa Fe, New Mexico 87504-2088

DISTRICT III

1000 Rio Brazos Rd., Artesia, NM 87410

DISTRICT IV

P.O. BOX 2088, SANTA FE, N.M. 87504-2088

WELL LOCATION AND ACREAGE DEDICATION PLAT

☐ AMENDED REPORT

API Number 30-025-35430	Pool Code 33820	Pool Name Jalmat, Tansill, Yates, Seven Rivers
Property Code 25191	Property Name JALMAT FIELD YATES SAND UNIT	Well Number 174
OCRD No. 184860	Operator Name MELROSE OPERATING CO.	Elevation 3613'

Surface Location

UL or lot No.	Section	Township	Range	Lot Idn	Feet from the	North/South line	Feet from the	East/West line	County
C	11	22S	35E		1310	NORTH	1330	WEST	LEA

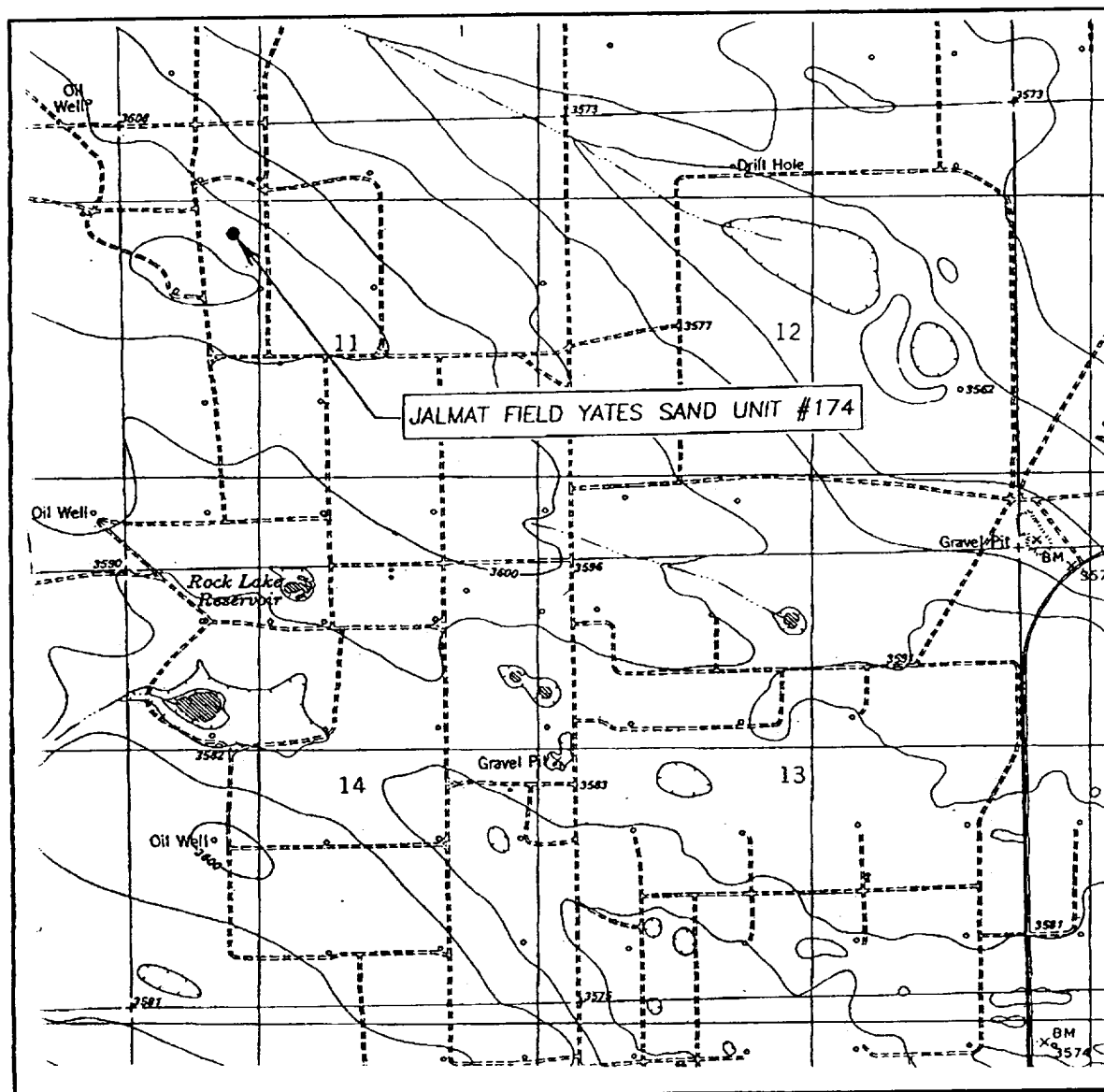
Bottom Hole Location If Different From Surface

UL or lot No.	Section	Township	Range	Lot Idn	Feet from the	North/South line	Feet from the	East/West line	County
Dedicated Acres 40	Joint or Infill X	Consolidation Code	Order No. R 10533						

NO ALLOWABLE WILL BE ASSIGNED TO THIS COMPLETION UNTIL ALL INTERESTS HAVE BEEN CONSOLIDATED
OR A NON-STANDARD UNIT HAS BEEN APPROVED BY THE DIVISION

	OPERATOR CERTIFICATION I hereby certify the information contained herein is true and complete to the best of my knowledge and belief. Signature Printed Name Ann E. Ritchie Title Regulatory Agent Date 2-23-01 915 684-6831	
	SURVEYOR CERTIFICATION I hereby certify that the well location shown on this plat was plotted from field notes of actual surveys made by me or under my supervision and that the same is true and correct to the best of my belief. Date Surveyed FEBRUARY 21, 2001 Signature Printed Name RONALD E. KIDSON Title PROFESSIONAL SURVEYOR Date 2/23/01 State No. 3239 License No. 12641	
	Date Surveyed 2/23/01 Signature Printed Name RONALD E. KIDSON Title PROFESSIONAL SURVEYOR Date 2/23/01 State No. 3239 License No. 12641	

LOCATION VERIFICATION MAP



SCALE: 1" = 2000'

CONTOUR INTERVAL: 10'
OIL CENTER, N.M.

SEC. 11 TWP. 22-S RGE. 35-E

SURVEY N.M.P.M.

COUNTY LEA COUNTY

DESCRIPTION 1310' FNL & 1330' FWL

ELEVATION 3613'

OPERATOR MELROSE OPERATING CO.

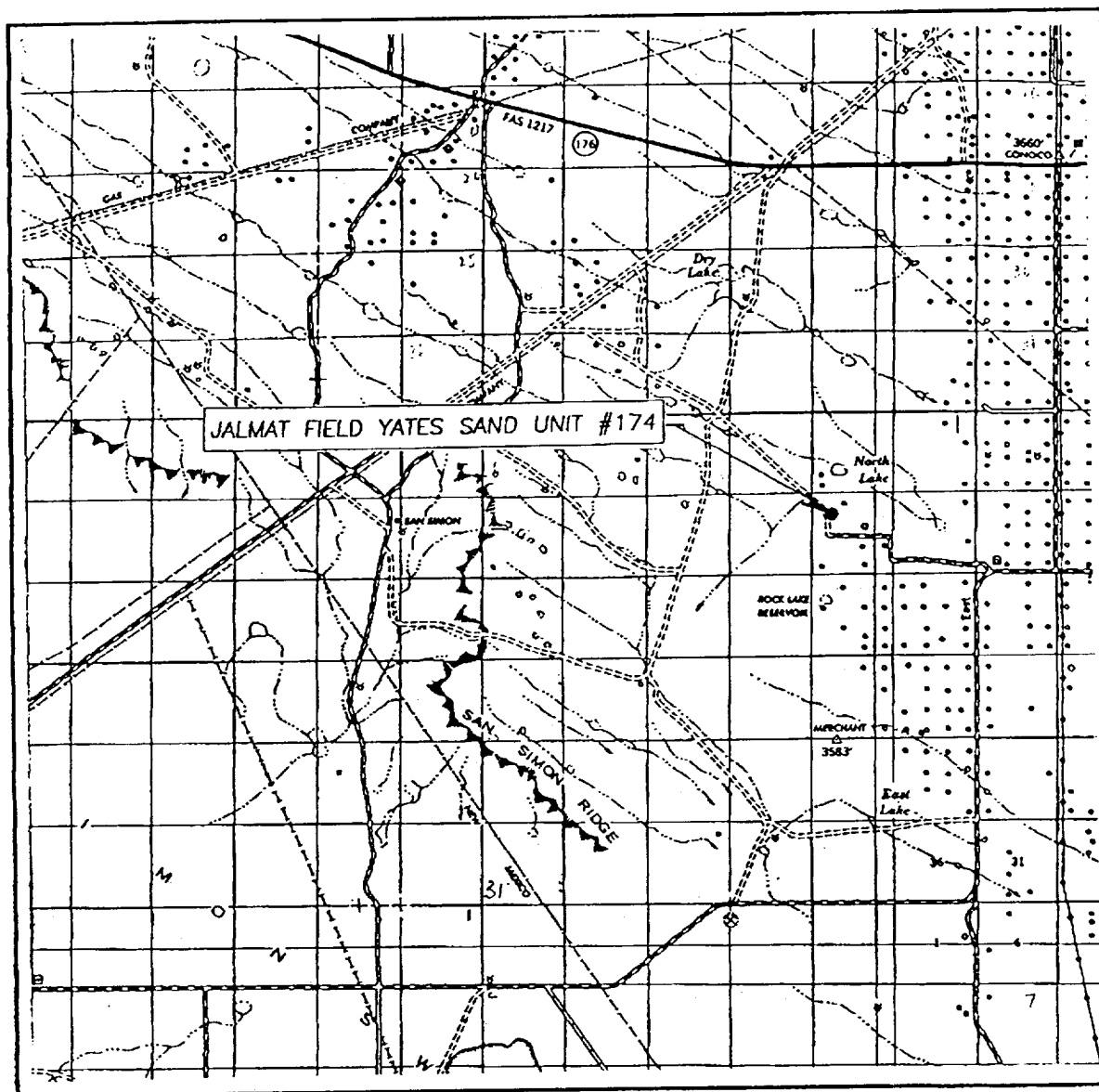
LEASE JALMAT FIELD YATES SAND UNIT

U.S.G.S. TOPOGRAPHIC MAP

OIL CENTER, N.M.

JOHN WEST SURVEYING
HOBBS, NEW MEXICO
(505) 393-3117

VICINITY MAP



SCALE: 1" = 2 MILES

SEC. 11 TWP. 22-S RGE. 35-E

SURVEY N.M.P.M.

COUNTY LEA COUNTY

DESCRIPTION 1310' FNL & 1330' FWL

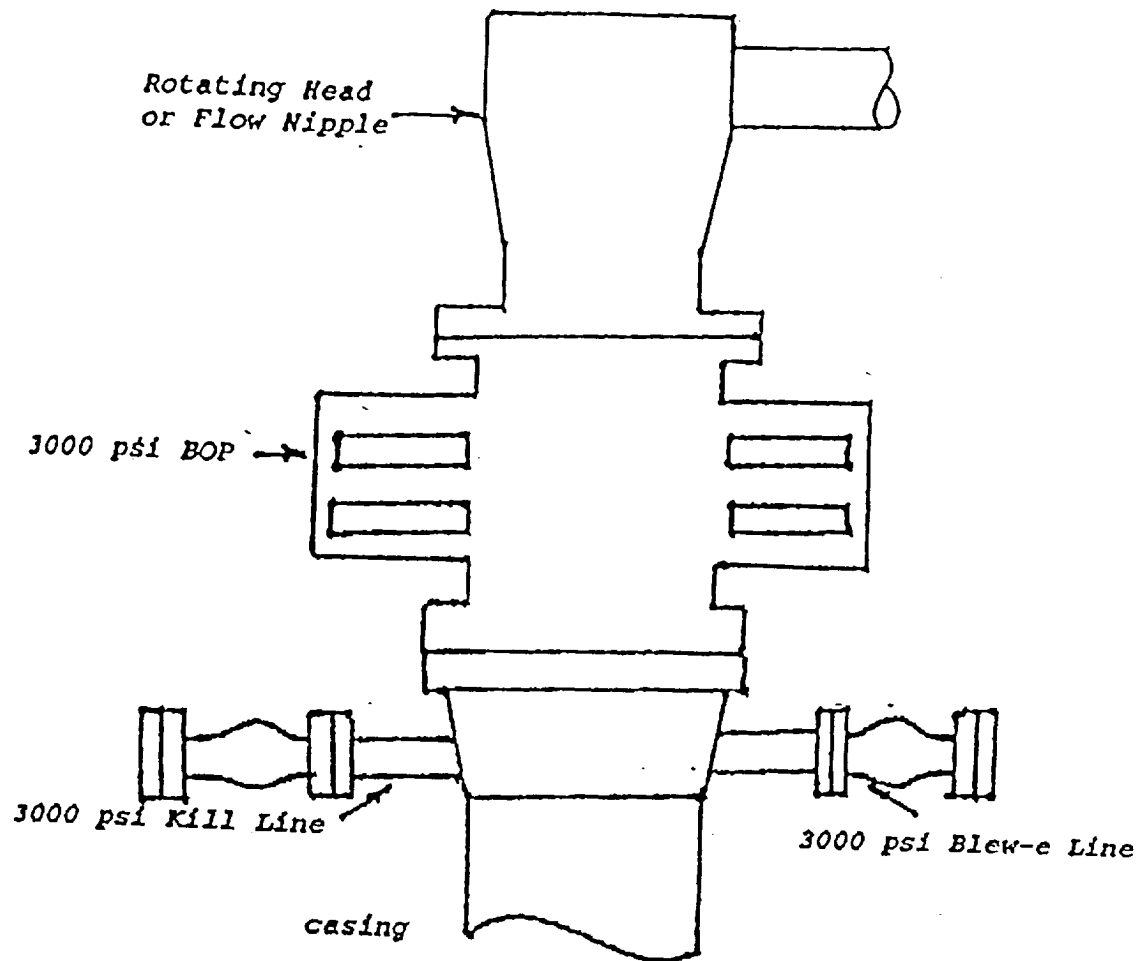
ELEVATION 3613'

OPERATOR MELROSE OPERATING CO.

LEASE JALMAT FIELD YATES SAND UNIT

JOHN WEST SURVEYING
HOBBS, NEW MEXICO
(505) 393-3117

Blow Out Preventor Schematic



Melrose Operating Co.
INC.

Lease: Jalmat Field Yates
Sand Unit

ABOVE DATE DOES NOT
INDICATE WHEN
CONFIDENTIAL LOGS
WILL BE RELEASED

ELF