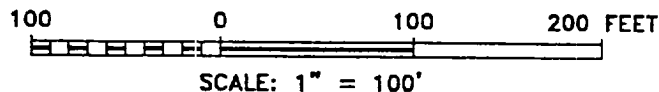
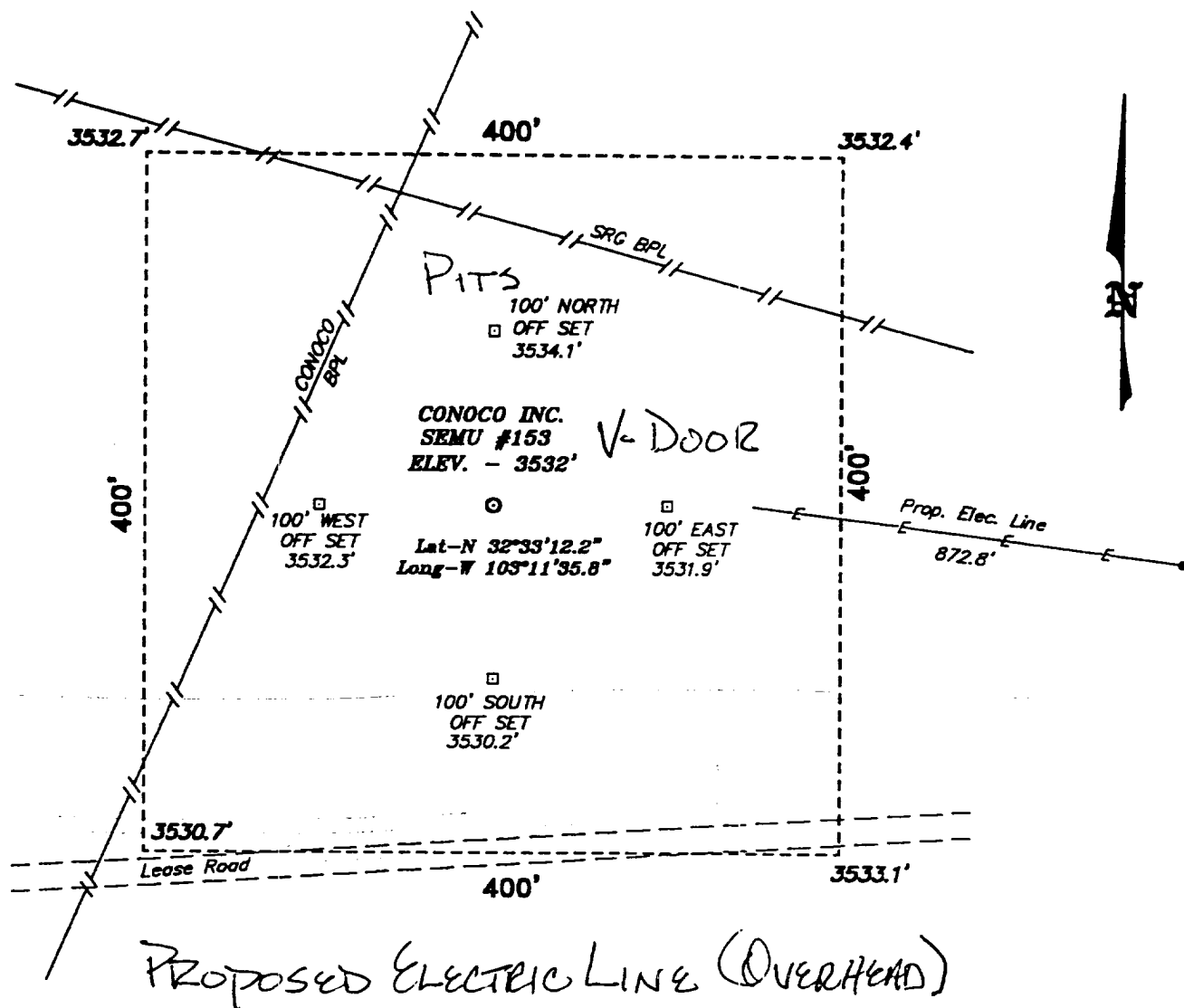


**SECTION 19, TOWN HIP 20 SOUTH, RANGE 38 EAST, N.M.P.M.,
LEA COUNTY, NEW MEXICO.**



DIRECTIONS TO WELL LOCATION:

FROM JUNCTION NORTH LOOP 18 AND STATE HWY. 18,
GO SOUTHWEST ON LOOP 18 APPROX. 2.5 MILES TO
COUNTY ROAD C-34; THENCE NORTHWEST ON C-34
APPROX. 3.5 MILES TO A POINT WHICH LIES 2 MILES
SOUTH OF THE PROPOSED WELL LOCATION.

BASIN SURVEYS P.O. BOX 1786-HOBBS, NEW MEXICO

W.O. Number: 0579

Drawn By: K. GOAD

Date: 10-24-2000

Disk: KJG #122 - 0579A.DWG

Conoco Inc.

REF: SEMU No. 153 / Well Pad Topo

THE SEMU No. 153 LOCATED 830' FROM THE
SOUTH LINE AND 910' FROM THE WEST LINE OF
SECTION 19, TOWNSHIP 20 SOUTH, RANGE 38 EAST,
N.M.P.M., LEA COUNTY, NEW MEXICO.

Survey Date: 10-23-2000

Sheet 1 of 1 Sheets