

State of New Mexico  
Energy, Minerals & Natural Resources

Form C-101  
Revised March 17, 1999

District I  
1625 N. French Dr., Hobbs, NM 88240  
District II  
811 S. 1st Street, Artesia, NM 88210  
District III  
1000 Rio Brazos Rd., Aztec, NM 87410  
District IV  
2040 South Pacheco, Santa Fe, NM 87505

Oil Conservation Division  
2040 South Pacheco  
Santa Fe, NM 87505

Submit to appropriate District Office  
State Lease - 6 Copies  
Fee Lease - 5 Copies

☐ AMENDED REPORT

**APPLICATION FOR PERMIT TO DRILL, RE-ENTER, DEEPEN, PLUGBACK, OR ADD A ZONE**

<sup>1</sup> Operator Name and Address <b>Chevron U.S.A. Inc. P.O. Box 1150</b>		<sup>2</sup> OGRID Number <b>4323</b>
		<sup>3</sup> API Number <b>30-025-35543</b>
<sup>4</sup> Property Code <b>2571</b>	<sup>5</sup> Property Name <b>ARROWHEAD GRAYBURG UNIT</b>	<sup>6</sup> Well No. <b>337Y</b>

<sup>7</sup> Surface Location									
UL or lot no.	Section	Township	Range	Lot. Idn	Feet from the	North/South Line	Feet from the	East/West line	County
<b>A</b>	<b>2</b>	<b>22S</b>	<b>36E</b>		<b>60</b>	<b>NORTH</b>	<b>1270</b>	<b>EAST</b>	<b>LEA</b>

<sup>8</sup> Proposed Bottom Hole Location If Different From Surface									
UL or lot no.	Section	Township	Range	Lot. Idn	Feet from the	North/South Line	Feet from the	East/West line	County
<sup>9</sup> Proposed Pool 1 <b>ARROWHEAD; GRAYBURG 03040</b>					<sup>10</sup> Proposed Pool 2				

<sup>11</sup> Work Type Code <b>N</b>	<sup>12</sup> Well Type Code <b>O</b>	<sup>13</sup> Cable/Rotary <b>ROTARY</b>	<sup>14</sup> Lease Type Code <b>S</b>	<sup>15</sup> Ground Level Elevation <b>3559'</b>
<sup>16</sup> Multiple	<sup>17</sup> Proposed Depth <b>4000'</b>	<sup>18</sup> Formation <b>GRAYBURG</b>	<sup>19</sup> Contractor <b>UNKNOWN</b>	<sup>20</sup> Spud Date <b>5/14/01</b>

<sup>21</sup> Proposed Casing and Cement Program					
Hole Size	Casing Size	Casing weight/foot	Setting Depth	Sacks of Cement	Estimated TOC
<b>12-1/4"</b>	<b>9-5/8"</b>	<b>36</b>	<b>500'</b>	<b>300</b>	<b>SURF</b>
<b>8-3/4"</b>	<b>7"</b>	<b>20</b>	<b>4000'</b>	<b>750</b>	<b>SURF</b>

<sup>22</sup> Describe the proposed program. If this application is to DEEPEN or PLUG BACK, give the data on the present productive zone and proposed new productive zone.  
Describe the blowout prevention program, if any. Use additional sheets if necessary.

**CHEVRON PROPOSES TO:**  
**DRILL 12-1/4" HOLE TO 500', RUN 9-5/8" CSG. CMT W/CLASS "C" TO SURF.**  
**DRILL 8-3/4" HOLE TO 4000', RUN 7" CSG. CMT W/CLASS "C" TO SURF.**

**MUD PROGRAM:** 0' - 500' 8.4 PPG FRESH WATER  
500' - 4000' 10.0 PPG BRINE WATER

Permit Expires 1 Year From Approval  
Date Unless Drilling Underway

**CHEVRON CLASS II BOPE**

<sup>23</sup> I hereby certify that the information given above is true and complete to the best of my knowledge and belief.

Signature: *J. K. Ripley*

Printed name: **J. K. RIPLEY**

Title: **REGULATORY O.A.**

Date: **5/7/01**

Phone:

**OIL CONSERVATION DIVISION**

Approved by:

Title:

Approval Date:

Expiration Date:

Conditions of Approval:

Attached ☐

DISTRICT I  
P.O. Box 1988, Hobbs, NM 88241-1988

DISTRICT II  
P.O. Drawer DD, Artesia, NM 88211-0719

DISTRICT III  
1000 Rio Brazos Rd., Artec, NM 87410

DISTRICT IV  
P.O. BOX 2088, SANTA FE, N.M. 87504-2088

State of New Mexico

Energy, Minerals and Natural Resources Department

OIL CONSERVATION DIVISION

P.O. Box 2088  
Santa Fe, New Mexico 87504-2088

Form C-102  
Revised February 10, 1994  
Submit to Appropriate District Office  
State Lease - 4 Copies  
Fee Lease - 3 Copies

WELL LOCATION AND ACREAGE DEDICATION PLAT

☐ AMENDED REPORT

API Number <b>30-025-3554.3</b>	Pool Code <b>03040</b>	Pool Name <b>Arrowhead; Grayburg</b>
Property Code <b>2571</b>	Property Name <b>A.G.U.</b>	Well Number <b>337Y</b>
OGRID No. <b>4323</b>	Operator Name <b>CHEVRON U.S.A. PRODUCTION COMPANY</b>	Elevation <b>3559'</b>

Surface Location

UL or lot No.	Section	Township	Range	Lot Idn	Feet from the	North/South line	Feet from the	East/West line	County
<b>A</b>	<b>2</b>	<b>22-S</b>	<b>36-E</b>		<b>60</b>	<b>NORTH</b>	<b>1270</b>	<b>EAST</b>	<b>LEA</b>

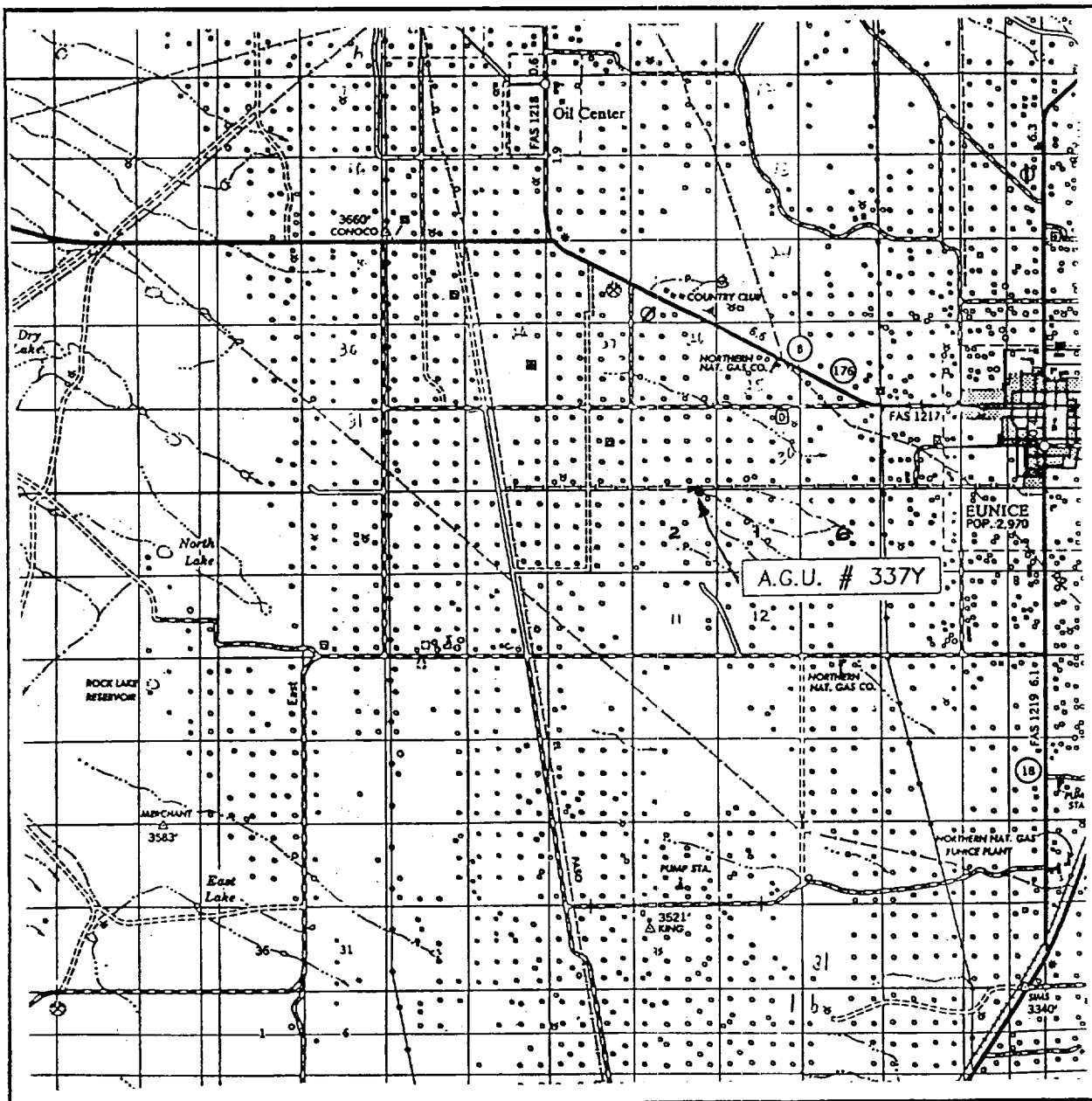
Bottom Hole Location If Different From Surface

UL or lot No.	Section	Township	Range	Lot Idn	Feet from the	North/South line	Feet from the	East/West line	County
Dedicated Acres <b>40</b>	Joint or Infill	Consolidation Code	Order No.						

NO ALLOWABLE WILL BE ASSIGNED TO THIS COMPLETION UNTIL ALL INTERESTS HAVE BEEN CONSOLIDATED  
OR A NON-STANDARD UNIT HAS BEEN APPROVED BY THE DIVISION

	<b>OPERATOR CERTIFICATION</b>  I hereby certify the the information contained herein is true and complete to the best of my knowledge and belief.   Signature <b>J. K. Ripley</b> Printed Name <b>O.A.</b> Title <b>5/7/01</b> Date
	<b>SURVEYOR CERTIFICATION</b>  I hereby certify that the well location shown on this plat was plotted from field notes of actual surveys made by me or under my supervision, and that the same is true and correct to the best of my belief.  <b>MAY 01, 2001</b> Date Surveyed <b>AWB</b> Signature & Seal of Professional Surveyor  Certificate No. <b>RONALD V. EDSON 3239</b> <b>GARY EDSON 12841</b>

# VICINITY MAP



SCALE: 1" = 2 MILES

SEC. 2 TWP. 22-S RGE. 36-E

SURVEY N.M.P.M.

COUNTY LEA

DESCRIPTION 60' FNL & 1270' FEL

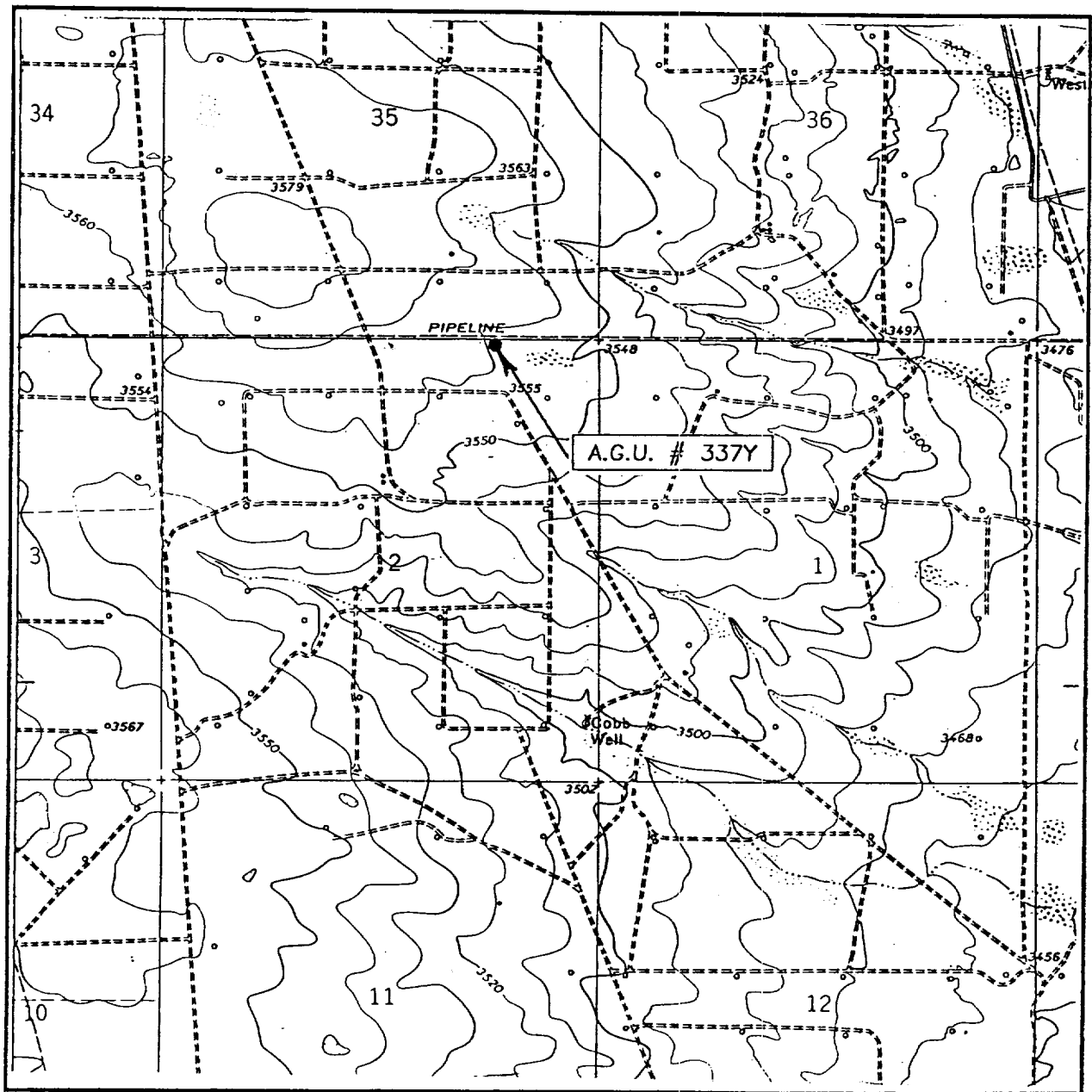
ELEVATION 3559'

OPERATOR CHEVRON U.S.A. PRODUCTION COMPANY

LEASE A.G.U.

JOHN WEST SURVEYING  
HOBBS, NEW MEXICO  
(505) 393-3117

# LOCATION VERIFICATION MAP



SCALE: 1" = 2000'

CONTOUR INTERVAL: 10'

EUNICE, N.M.

SEC. 2 TWP. 22-S RGE. 36-E

SURVEY N.M.P.M.

COUNTY LEA

DESCRIPTION 60' FNL & 1270' FEL

ELEVATION 3559'

OPERATOR CHEVRON U.S.A. PRODUCTION COMPANY

LEASE A.G.U.

U.S.G.S. TOPOGRAPHIC MAP

EUNICE, N.M.

JOHN WEST SURVEYING  
HOBBS, NEW MEXICO

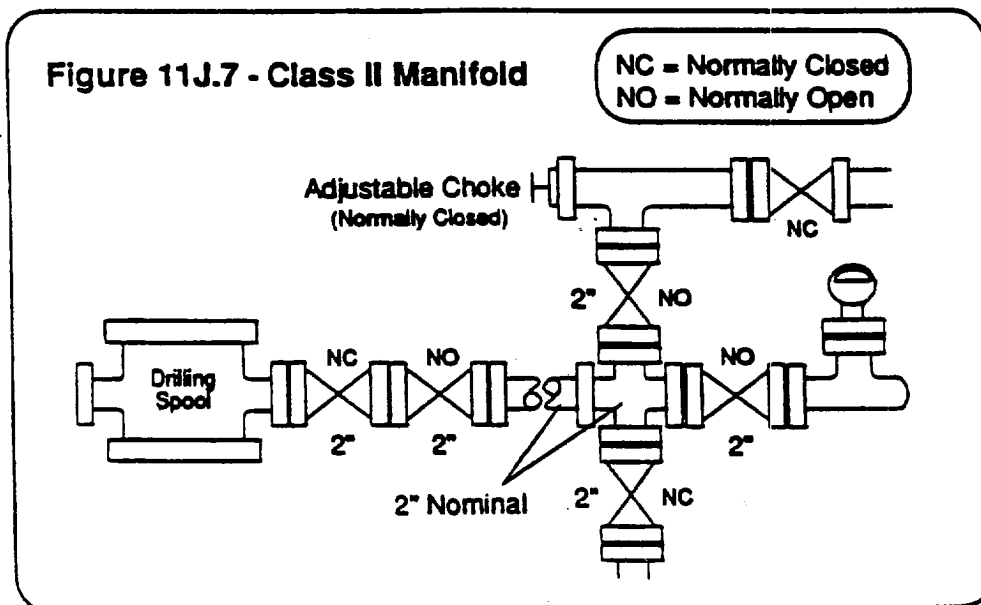
(505) 393-3117

**CHEVRON DRILLING REFERENCE SERIES  
VOLUME ELEVEN  
WELL CONTROL AND BLOWOUT PREVENTION**

**C. CLASS II CHOKE MANIFOLD**

The Class II choke manifold is suitable for all Class II workovers and drilling operations. The Class II choke manifold is shown below in Figure 11J.7. Specific design features of the Class II choke manifold include:

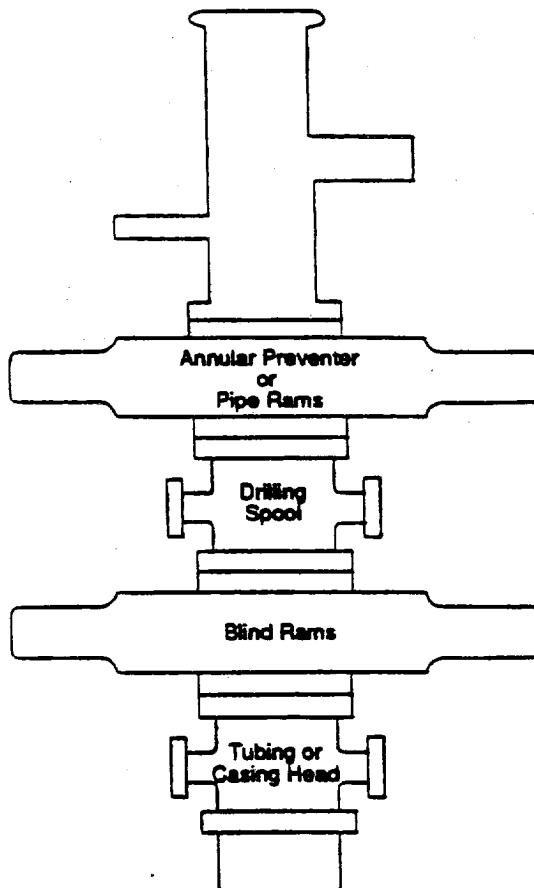
1. The manifold is attached to the tubing/casing head when a Class II-A preventer stack is used. This hook-up is only recommended for Class II workover operations.
2. The manifold is attached to a drilling spool or top ram preventer side outlets when a Class II-B preventer stack is in use.
3. The minimum internal diameter is 2" (nominal) for outlets, flanges, valves and lines.
4. Includes two steel gate valves in the choke line at the wellhead/drilling spool outlet. The inside choke line valve may be remotely controlled (HCR).
5. Includes one manually adjustable choke which is installed on the side of the manifold cross. Steel isolation gate valves are installed between the choke and the cross, and downstream of the choke.
6. Includes one bleed line installed on the side of the manifold cross which is isolated by a steel gate valve.
7. Includes a pressure gauge suitable for drilling service which can display the casing pressure within view of the choke operator.
8. Screwed connections may be used in lieu of flanges or clamps.



CHEVRON DRILLING REFERENCE SERIES  
VOLUME ELEVEN  
WELL CONTROL AND BLOWOUT PREVENTION

D. CLASS II-B BLOWOUT PREVENTER STACK:

**Figure 11J.3**  
**Class II-B Blowout Preventer Stack**



The Class II-B preventer stack is designed for drilling or workover operations. It is composed of a single hydraulically operated annular preventer on top, then a drilling spool, and a single blind ram preventer on bottom. In an alternate configuration, a single pipe ram preventer may be substituted for the annular preventer. The choke and kill lines are installed onto the drilling spool and must have a minimum internal diameter of 2". An emergency kill line may be installed on the wellhead. As the maximum anticipated surface pressure of this stack is less than 2000 psi, screwed connections may be used. All components must be of steel construction. The Class II-B blowout preventer stack is shown to the left in Figure 11J.3.

ABOVE DATE DOES NOT  
INDICATE WHEN  
CONFIDENTIAL LOGS  
WILL BE RELEASED

ELF

6/27/01