

District I  
1625 N. French Dr., Hobbs, NM 88240  
District II  
811 S. 1st Street, Artesia, NM 88210  
District III  
1000 Rio Brazos Rd., Aztec, NM 87410  
District IV  
2040 South Pacheco, Santa Fe, NM 87505

State of New Mexico  
Energy, Minerals & Natural Resources

Form C-101  
Revised March 17, 1999

Oil Conservation Division  
2040 South Pacheco  
Santa Fe, NM 87505

Submit to appropriate District Office  
State Lease - 6 Copies  
Fee Lease - 5 Copies

☐ AMENDED REPORT

APPLICATION FOR PERMIT TO DRILL, RE-ENTER, DEEPEN, PLUGBACK, OR ADD A ZONE

<sup>1</sup> Operator Name and Address <b>Amerada Hess Corporation</b> <b>P.O. Box 2040, Houston, TX. 77252</b>		<sup>2</sup> OGRID Number <b>000495</b>
<sup>4</sup> Property Code <b>25890</b>	<sup>3</sup> Property Name <b>Fred TURNER Jr. B</b>	<sup>5</sup> API Number <b>30-025-35921</b>
		<sup>6</sup> Well No. <b>3</b>

<sup>7</sup> Surface Location									
UL or lot no.	Section	Township	Range	Lot Idn	Feet from the	North/South Line	Feet from the	East/West line	County
<b>G</b>	<b>17</b>	<b>20 S</b>	<b>38 E</b>		<b>2150</b>	<b>NORTH</b>	<b>1980</b>	<b>EAST</b>	<b>LEA</b>

<sup>8</sup> Proposed Bottom Hole Location If Different From Surface									
UL or lot no.	Section	Township	Range	Lot Idn	Feet from the	North/South Line	Feet from the	East/West line	County

<sup>9</sup> Proposed Pool 1 <b>WEST NADINE PALDOCK-ELINEERY-WARREN ABO WEST</b>	<sup>10</sup> Proposed Pool 2 <b>WEST NADINE - TUEB - SKAGGS DRINKARD</b>
---	--

<sup>11</sup> Work Type Code <b>N</b>	<sup>12</sup> Well Type Code <b>O</b>	<sup>13</sup> Cable/Rotary <b>ROTARY</b>	<sup>14</sup> Lease Type Code <b>P</b>	<sup>15</sup> Ground Level Elevation <b>3564'</b>
<sup>16</sup> Multiple <b>NO</b>	<sup>17</sup> Proposed Depth <b>7250'</b>	<sup>18</sup> Formation <b>ABO</b>	<sup>19</sup> Contractor <b>PATTERSON</b>	<sup>20</sup> Spud Date <b>06/15/02</b>

<sup>21</sup> Proposed Casing and Cement Program					
Hole Size	Casing Size	Casing weight/foot	Setting Depth	Sacks of Cement	Estimated TOC
<b>11"</b>	<b>8-5/8"</b>	<b>24#</b>	<b>1500'</b>	<b>600</b>	<b>SURFACE</b>
<b>7-7/8"</b>	<b>5-1/2"</b>	<b>17#</b>	<b>7250'</b>	<b>1250</b>	<b>2500'</b>

<sup>22</sup> Describe the proposed program. If this application is to DEEPEN or PLUG BACK, give the data on the present productive zone and proposed new productive zone. Describe the blowout prevention program, if any. Use additional sheets if necessary.

1. DRILL AN 11" HOLE TO 1500' AND SET 1500' OF 24# 8-5/8" SURFACE CASING.  
CEMENT WITH 600 SX OF 65/35 POZ AND CIRCULATE TO SURFACE.

2. DRILL AN 7-7/8" HOLE TO 7250' AND SET 7250' OF 17# 5-1/2" PRODUCTION CASING.  
CEMENT WITH 1250 SX OF CLASS "H".

Permit Expires: \_\_\_\_\_ Approval Date: \_\_\_\_\_

<sup>23</sup> I hereby certify that the information given above is true and complete to the best of my knowledge and belief.		<b>OIL CONSERVATION DIVISION</b>	
Signature: <i>Mike Jumper</i>		Approved by: <b>ORIGINAL SIGNED BY</b>	
Printed name: <b>Mike Jumper</b>		Title: <b>PAUL F. KAUTZ</b>	
Title: <b>Adm. Supervisor Drilling Svcs.</b>		Approval Date: <b>JUL 04 2002</b>	
Date: <b>05/20/02</b>	Phone: <b>713-609-4846</b>	Conditions of Approval:	
		Attached <input type="checkbox"/>	

SLA

MP

DISTRICT I  
1625 N. French Dr., Hobbs, NM 88240

DISTRICT II  
811 South First, Artesia, NM 88210

DISTRICT III  
1000 Rio Brazos Rd., Aztec, NM 87410

DISTRICT IV  
2040 South Pacheco, Santa Fe, NM 87505

State of New Mexico  
Energy, Minerals and Natural Resources Department

Form C-102  
Revised March 17, 1999

Submit to Appropriate District Office  
State Lease - 4 Copies  
Fee Lease - 3 Copies

OIL CONSERVATION DIVISION

2040 South Pacheco  
Santa Fe, New Mexico 87504-2088

☐ AMENDED REPORT

WELL LOCATION AND ACREAGE DEDICATION PLAT

API Number <b>30-025-3592</b>	Pool Code <b>47400</b>	Pool Name <b>WEST NADINE-PADDOCK-BLINEBERRY</b>
Property Code <b>25890</b>	Property Name <b>FRED TURNER JR B</b>	Well Number <b>3</b>
OGRID No. <b>000495</b>	Operator Name <b>AMERADA HESS CORPORATION</b>	Elevation <b>3564'</b>

Surface Location

UL or lot No. <b>G</b>	Section <b>17</b>	Township <b>20 S</b>	Range <b>38 E</b>	Lot Idn	Feet from the <b>2150</b>	North/South line <b>NORTH</b>	Feet from the <b>1980</b>	East/West line <b>EAST</b>	County <b>LEA</b>
---------------------------	----------------------	-------------------------	----------------------	---------	------------------------------	----------------------------------	------------------------------	-------------------------------	----------------------

Bottom Hole Location If Different From Surface

UL or lot No.	Section	Township	Range	Lot Idn	Feet from the	North/South line	Feet from the	East/West line	County
Dedicated Acres <b>40</b>		Joint or Infill <b>I</b>	Consolidation Code	Order No.					

NO ALLOWABLE WILL BE ASSIGNED TO THIS COMPLETION UNTIL ALL INTERESTS HAVE BEEN CONSOLIDATED  
OR A NON-STANDARD UNIT HAS BEEN APPROVED BY THE DIVISION

	<b>OPERATOR CERTIFICATION</b>  I hereby certify the the information contained herein is true and complete to the best of my knowledge and belief.   Signature <b>MIKE JUMPER</b> Printed Name <b>ADM. SUPERVISOR</b> Title <b>05/20/02</b> Date
	<b>SURVEYOR CERTIFICATION</b>  I hereby certify that the well location shown on this plat was plotted from field notes of actual surveys made by me or under my supervision and that the same is true and correct to the best of my belief.  <b>September 18, 2000</b> Date Surveyed  Signature & Seal of Professional Surveyor  W.O. No. 0523 Certification No. Gary L. Jones 7977 BASIN SURVEYS

DISTRICT I  
1825 N. French Dr., Hobbs, NM 88240

DISTRICT II  
311 South First, Artesia, NM 88210

DISTRICT III  
1000 Rio Brazos Rd., Artesia, NM 87410

DISTRICT IV  
2040 South Pacheco, Santa Fe, NM 87505

State of New Mexico  
Energy, Minerals and Natural Resources Department

Form C-102  
Revised March 17, 1999

Submit to Appropriate District Office  
State Lease - 4 Copies  
Fee Lease - 3 Copies

OIL CONSERVATION DIVISION

2040 South Pacheco  
Santa Fe, New Mexico 87504-2088

☐ AMENDED REPORT

WELL LOCATION AND ACREAGE DEDICATION PLAT

API Number <b>30-025-3592-1</b>	Pool Code <b>47400</b>	Pool Name <b>WARREN ABO WEST</b>
Property Code <b>25890</b>	Property Name <b>FRED TURNER "B" 35.1 B</b>	Well Number <b>3</b>
OGRID No. <b>000495</b>	Operator Name <b>AMERADA HESS CORPORATION</b>	Elevation <b>3564'</b>

Surface Location

UL or lot No.	Section	Township	Range	Lot Idn	Feet from the	North/South line	Feet from the	East/West line	County
<b>G</b>	<b>17</b>	<b>20 S</b>	<b>38 E</b>		<b>2150</b>	<b>NORTH</b>	<b>1980</b>	<b>EAST</b>	<b>LEA</b>

Bottom Hole Location If Different From Surface

UL or lot No.	Section	Township	Range	Lot Idn	Feet from the	North/South line	Feet from the	East/West line	County
Dedicated Acres <b>40</b>	Joint or Infill <b>I</b>	Consolidation Code	Order No.						

NO ALLOWABLE WILL BE ASSIGNED TO THIS COMPLETION UNTIL ALL INTERESTS HAVE BEEN CONSOLIDATED  
OR A NON-STANDARD UNIT HAS BEEN APPROVED BY THE DIVISION

	<b>OPERATOR CERTIFICATION</b>  I hereby certify the information contained herein is true and complete to the best of my knowledge and belief.   Signature <b>MIKE JUMPER</b> Printed Name <b>ADM. SUPERVISOR</b> Title <b>05/20/02</b> Date	
	<b>SURVEYOR CERTIFICATION</b>  I hereby certify that the well location shown on this plat was plotted from field notes of actual surveys made by me or under my supervision and that the same is true and correct to the best of my belief.  <b>September 18, 2000</b> Date Surveyed  Signature, & Seal of Professional Surveyor  Certificate No. Gary Jones 7977 <b>BASIN SURVEYS</b>	

DISTRICT I  
1625 N. French Dr., Hobbs, NM 88240

DISTRICT II  
811 South First, Artesia, NM 88210

DISTRICT III  
1000 Rio Brazos Rd., Aztec, NM 87410

DISTRICT IV  
2040 South Pacheco, Santa Fe, NM 87505

State of New Mexico  
Energy, Minerals and Natural Resources Department

Form C-102  
Revised March 17, 1999

Submit to Appropriate District Office  
State Lease - 4 Copies  
Fee Lease - 3 Copies

OIL CONSERVATION DIVISION

2040 South Pacheco  
Santa Fe, New Mexico 87504-2088

☐ AMENDED REPORT

WELL LOCATION AND ACREAGE DEDICATION PLAT

API Number <b>30-025-35921</b>	Pool Code 47400	Pool Name WEST NADINE - TUBB
Property Code <b>2589C</b>	Property Name <b>FRED TURNER "B" JR. B</b>	Well Number <b>3</b>
GRID No. 000495	Operator Name AMERADA HESS CORPORATION	Elevation 3564'

Surface Location

UL or lot No.	Section	Township	Range	Lot Idn	Feet from the	North/South line	Feet from the	East/West line	County
G	17	20 S	38 E		2150	NORTH	1980	EAST	LEA

Bottom Hole Location If Different From Surface

UL or lot No.	Section	Township	Range	Lot Idn	Feet from the	North/South line	Feet from the	East/West line	County
Dedicated Acres 40	Joint or Infill I	Consolidation Code	Order No.						

NO ALLOWABLE WILL BE ASSIGNED TO THIS COMPLETION UNTIL ALL INTERESTS HAVE BEEN CONSOLIDATED  
OR A NON-STANDARD UNIT HAS BEEN APPROVED BY THE DIVISION

	<b>OPERATOR CERTIFICATION</b>  I hereby certify the the information contained herein is true and complete to the best of my knowledge and belief.   Signature <b>MIKE JUMPER</b> Printed Name <b>ADM. SUPERVISOR</b> Title <b>05/20/02</b> Date	
	<b>SURVEYOR CERTIFICATION</b>  I hereby certify that the well location shown on this plat was plotted from field notes of actual surveys made by me or under my supervision, and that the same is true and correct to the best of my belief.  <b>September 18, 2000</b> Date Surveyed  Signature of Professional Surveyor <b>W.D. No. 05235</b> Certificate No. <b>Cary L. Jones</b> 7977 BASIN SURVEY	

DISTRICT I  
1625 N. French Dr., Hobbs, NM 88240

DISTRICT II  
811 South First, Artesia, NM 88210

DISTRICT III  
1000 Rio Brazos Rd., Aztec, NM 87410

DISTRICT IV  
2040 South Pacheco, Santa Fe, NM 87505

State of New Mexico  
Energy, Minerals and Natural Resources Department

Form C-102  
Revised March 17, 1999

Submit to Appropriate District Office  
State Lease - 4 Copies  
Fee Lease - 3 Copies

OIL CONSERVATION DIVISION

2040 South Pacheco  
Santa Fe, New Mexico 87504-2088

☐ AMENDED REPORT

WELL LOCATION AND ACREAGE DEDICATION PLAT

API Number <b>30-025-35921</b>	Pool Code <b>47400</b>	Pool Name <b>SKAGGS DRINKARD</b>
Property Code <b>25890</b>	Property Name <b>FRED TURNER "B" 35.13</b>	Well Number <b>3</b>
OGRID No. <b>000495</b>	Operator Name <b>AMERADA HESS CORPORATION</b>	Elevation <b>3564'</b>

Surface Location

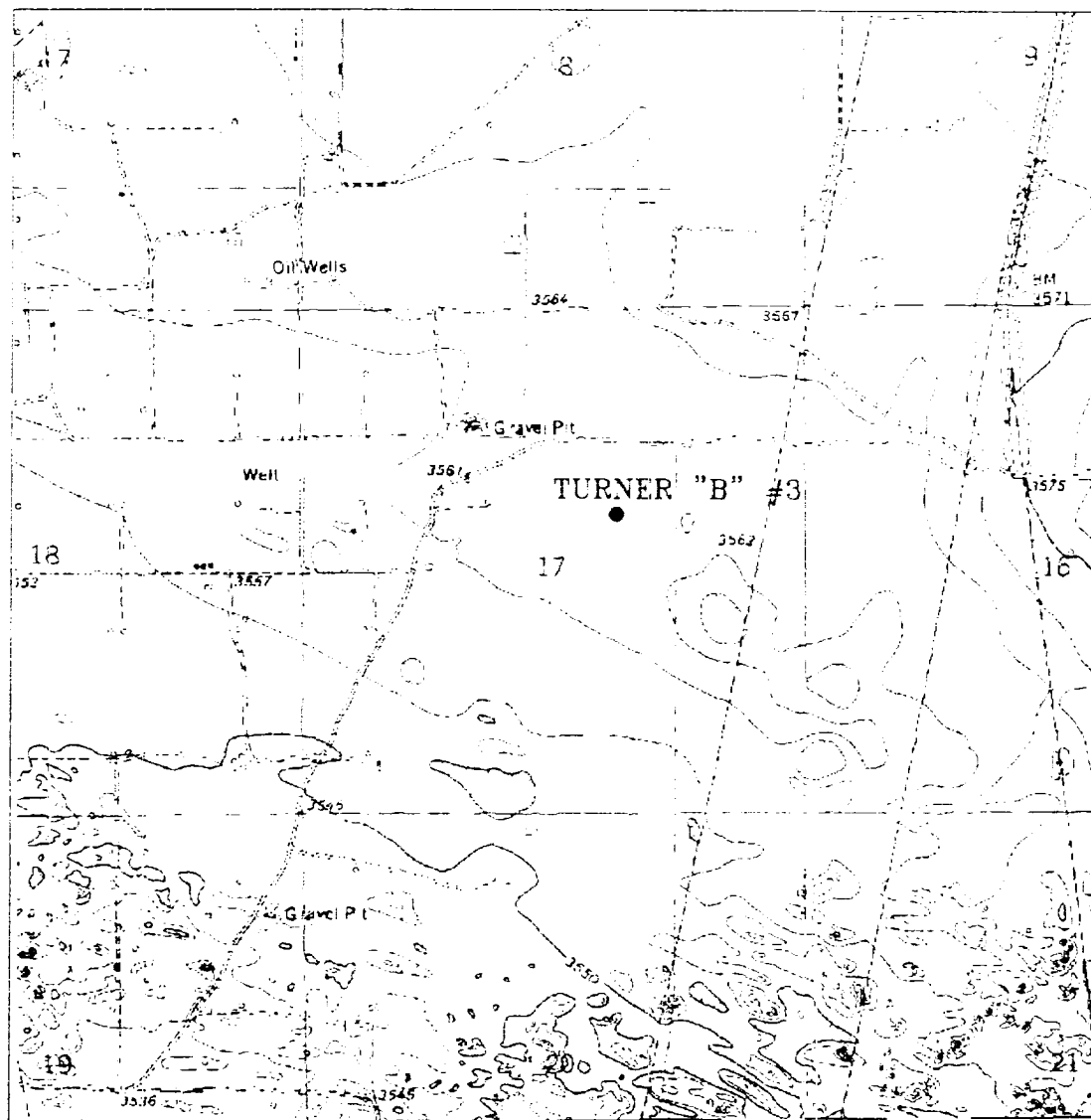
UL or lot No. <b>G</b>	Section <b>17</b>	Township <b>20 S</b>	Range <b>38 E</b>	Lot Idn	Feet from the <b>2150</b>	North/South line <b>NORTH</b>	Feet from the <b>1980</b>	East/West line <b>EAST</b>	County <b>LEA</b>
---------------------------	----------------------	-------------------------	----------------------	---------	------------------------------	----------------------------------	------------------------------	-------------------------------	----------------------

Bottom Hole Location If Different From Surface

UL or lot No.	Section	Township	Range	Lot Idn	Feet from the	North/South line	Feet from the	East/West line	County
Dedicated Acres <b>40</b>	Joint or Infill <b>I</b>	Consolidation Code	Order No.						

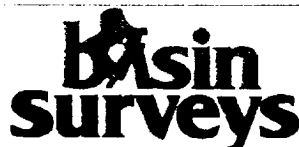
NO ALLOWABLE WILL BE ASSIGNED TO THIS COMPLETION UNTIL ALL INTERESTS HAVE BEEN CONSOLIDATED  
OR A NON-STANDARD UNIT HAS BEEN APPROVED BY THE DIVISION

	<p><b>OPERATOR CERTIFICATION</b></p> <p>I hereby certify the information contained herein is true and complete to the best of my knowledge and belief.</p> <p><i>Mike Jumper</i> Signature <b>MIKE JUMPER</b> Printed Name <b>ADM. SUPERVISOR</b> Title <b>05/20/02</b> Date</p> <p><b>SURVEYOR CERTIFICATION</b></p> <p>I hereby certify that the well location shown on this plat was plotted from field notes of actual surveys made by me or under my supervision, and that the same is true and correct to the best of my belief.</p> <p><b>September 18, 2000</b> Date Surveyed</p> <p><i>Gary L. Jones</i> Signature &amp; Seal of Professional Surveyor <b>W.O. No. 0523</b> Certificate No. <b>Gary L. Jones 7977</b> <b>BASTY SURVEYS</b></p>
--	---



### TURNER "B" #3

Located at 2150' FNL and 1980' FEL  
 Section 17, Township 20 South, Range 38 East,  
 N.M.P.M., Lea County, New Mexico.



P.O. Box 1786  
 1120 N. West County Rd.  
 Hobbs, New Mexico 88241  
 (505) 393-7316 - Office  
 (505) 392-3074 - Fax  
 basinsurveys.com

W.D. Number: 0523AA - K.D. #122

Survey Date: 08-18-2000

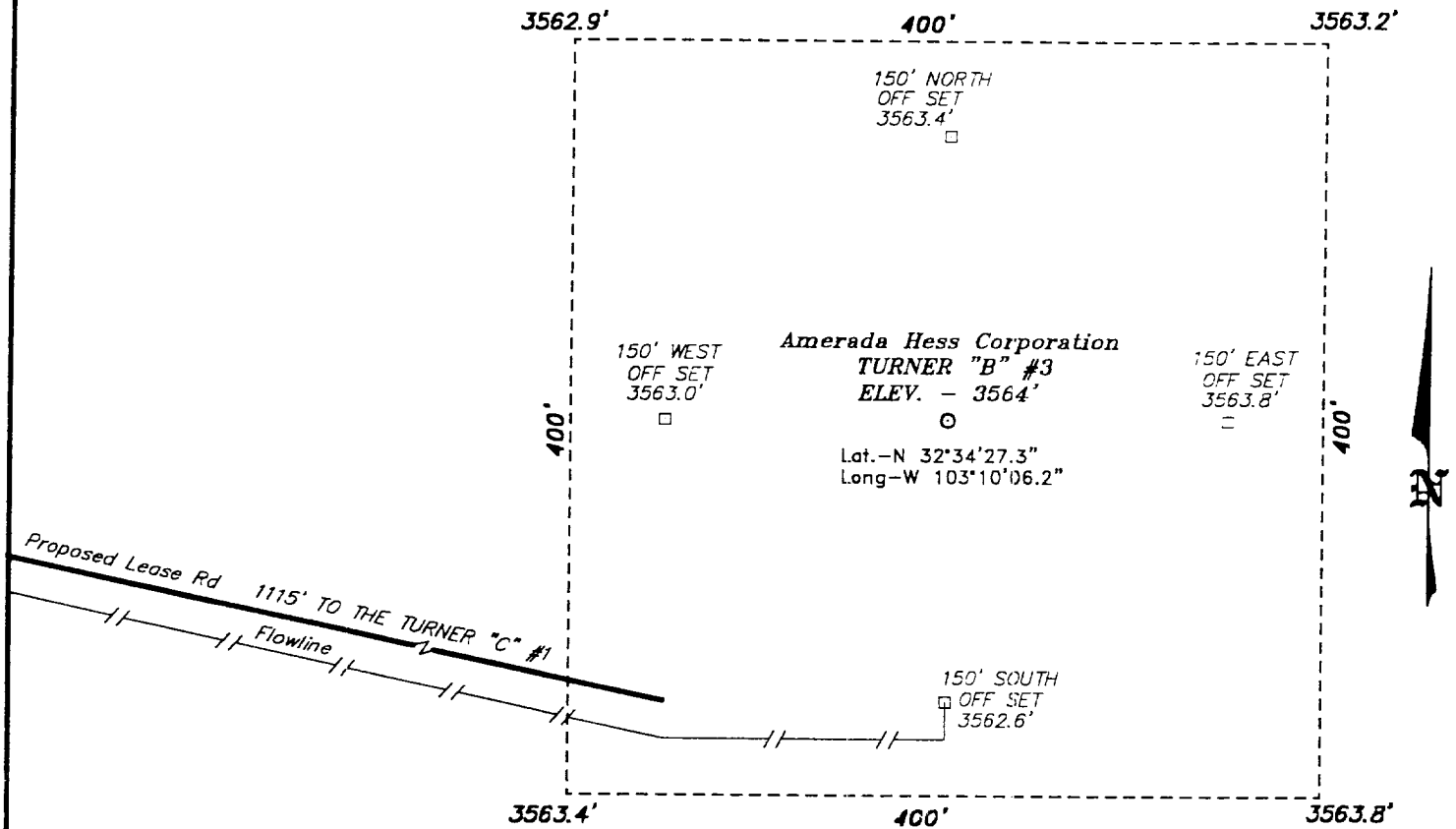
Scale: 1" = 2000

Date: 08-19-2000

**AMERADA HESS  
 CORPORATION**



SECTION 17, TOWNSHIP 20 SOUTH, RANGE 38 EAST, N.M.P.M.,  
LEA COUNTY, NEW MEXICO.



Directions to Location:

FROM THE JUNCTION OF CO. RD. C-45(BILLY WALKER RD.) AND STATE HWY 18, GO WEST ON BILLY WALKER RD. APPROX. 2.9 MILES TO A LEASE ROAD SOUTH; THENCE SOUTH ON LEASE ROAD APPROX. 1.25 MILE; THENCE EAST ON LEASE ROAD 1200 FEET; THENCE NORTH 600 FEET AND EAST 500 FEET TO THE TURNER "C" #1 WELL AND A PROPOSED LEASE ROAD ON THE SOUTHEAST CORNER OF THE PAD WHICH LIES 1115 FEET WEST OF THE PROPOSED WELL LOCATION.



SCALE: 1" = 100'

**Amerada Hess Corporation**

REF: TURNER "B" #3 / Well Pad Tapo

THE TURNER "B" No. 3 LOCATED 2150' FROM THE NORTH LINE AND 1980' FROM THE EAST LINE OF SECTION 17, TOWNSHIP 20 SOUTH, RANGE 38 EAST, N.M.P.M., LEA COUNTY, NEW MEXICO.

**BASIN SURVEYS** P.O. BOX 1786 - HOBBS, NEW MEXICO

W.O. Number: 0523 Drawn By: K. GOAD

DATE: 09-19-2000 Disk: KJG #122 - 0523A.DWG

Survey Date: 09-18-2000

Sheet 1 of 1 Sheets



3000# B.O.P. STACK

