

DISTRICT I
1625 N. French Dr., Hobbs, NM 88240

State of New Mexico
Energy, Minerals and Natural Resources Department

Form C-101
Revised March 17, 1999
Instructions on back
Submit to appropriate District Office
State Lease - 6 Copies
Fee Lease - 5 Copies

DISTRICT II
811 South First, Artesia, NM 88210

OIL CONSERVATION DIVISION

DISTRICT III
1000 Rio Brazos Rd., Aztec, NM 87410

PO BOX 2088
Santa Fe, NM 87504-2088

DISTRICT IV
2040 South Pacheco, Santa Fe, NM 87501

☐ AMENDED REPORT

APPLICATION FOR PERMIT TO DRILL, RE-ENTER, DEEPEN, PLUGBACK, OR ADD A ZONE

¹ Operator Name and Address Yates Petroleum Corporation 105 South Fourth Street Artesia, New Mexico 88210		² OGRID Number 025575
		³ API Number 30-025-3604
⁴ Property Code 12519	⁵ Property Name Lotus "ALT" State	⁶ Well No. 1

⁷ Surface Location

UL or lot no.	Section	Township	Range	Lot Idn	Feet from the	North/South Line	Feet from the	East/West Line	County
A	32	22S	32E		660'	North	660'	East	Lea

⁸ Proposed Bottom Hole Location If Different From Surface

UL or lot no.	Section	Township	Range	Lot Idn	Feet from the	North/South Line	Feet from the	East/West Line	County
⁹ Proposed Pool 1 SE Livingston Ridge Delaware					¹⁰ Proposed Pool 2				

¹¹ Work Type Code N	¹² Well Type Code O	¹³ Cable/Rotary Rotary	¹⁴ Lease Type Code S	¹⁵ Ground Level Elevation 3556'
¹⁶ Multiple N	¹⁷ Proposed Depth 8620'	¹⁸ Formation Delaware	¹⁹ Contractor Not Determined	²⁰ Spud Date ASAP

²¹ Proposed Casing and Cement Program

Hole Size	Casing Size	Casing weight/feet	Setting Depth	Sacks of Cement	Estimated TOC
17 1/2"	13 3/8"	48#	850'	450 sx	circulated
11"	8 5/8"	32#	4500'	1400 sx	circulated
7 7/8"	5 1/2"	15.5 & 17#	TD	950 sx	circulated

²² Describe the proposed program. If this application is to DEEPEN or PLUG BACK give the data on the present productive zone and proposed new production. Describe the blowout prevention program, if any. Use additional sheets if necessary.

Yates Petroleum Corporation proposes to drill and test the Delaware and intermediate formations. Approximately 850' of surface casing will be set and cement circulated. Approximately 4500' of intermediate casing will be set and cement circulated. If commercial, production casing will be run and cement circulated, perforated and stimulated as needed for production.

MUD PROGRAM: 0-850' FW/Native mud; 850'-4500' Brine; 4500'-6800' Cut Brine; 6800'-TD' Cut Brine/Starch.

BOPE PROGRAM: A diverter will be used on the 13 3/8" casing. A 3000# BOPE will be installed on the 8 5/8" casing and tested daily.

²³ I hereby certify that the information given above is true and complete to the best of my knowledge and belief.
Signature: *Clifton R. May*

Printed name: Clifton R. May

Title: Regulatory Agent

Date:

09/19/02

Phone:

(505) 748-1471

OIL CONSERVATION DIVISION

Approved by: ORIGINAL SIGNED BY
PAUL F. KAUTZ

Title: PETROLEUM ENGINEER

Approval Date: SEP 25 2002

Conditions of Approval

Attached ☐

Permit Expires 1 Year From Approval
Date Unless Drilling Underway

DISTRICT II
 811 South First, Artesia, NM 88210

DISTRICT III
 1000 Rio Brazos Rd., Aztec, NM 87410

DISTRICT IV
 2040 South Pacheco, Santa Fe, NM 87505

OIL CONSERVATION DIVISION
 P.O. Box 2088
 Santa Fe, New Mexico 87504-2088

☐ AMENDED REPORT

WELL LOCATION AND ACREAGE DEDICATION PLAT

API Number 30-025-36004	Pool Code 39380	Pool Name SE Livingston Ridge Delaware
Property Code 12519	Property Name LOTUS "ALT" STATE	Well Number 1
OGRID No. 025575	Operator Name YATES PETROLEUM CORPORATION	Elevation 3556

Surface Location

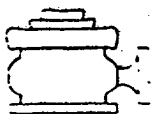
UL or lot No.	Section	Township	Range	Lot Idn	Feet from the	North/South line	Feet from the	East/West line	County
A	32	22S	32E		660	NORTH	660	EAST	LEA

Bottom Hole Location If Different From Surface

UL or lot No.	Section	Township	Range	Lot Idn	Feet from the	North/South line	Feet from the	East/West line	County
Dedicated Acres 40	Joint or Infill	Consolidation Code	Order No.						

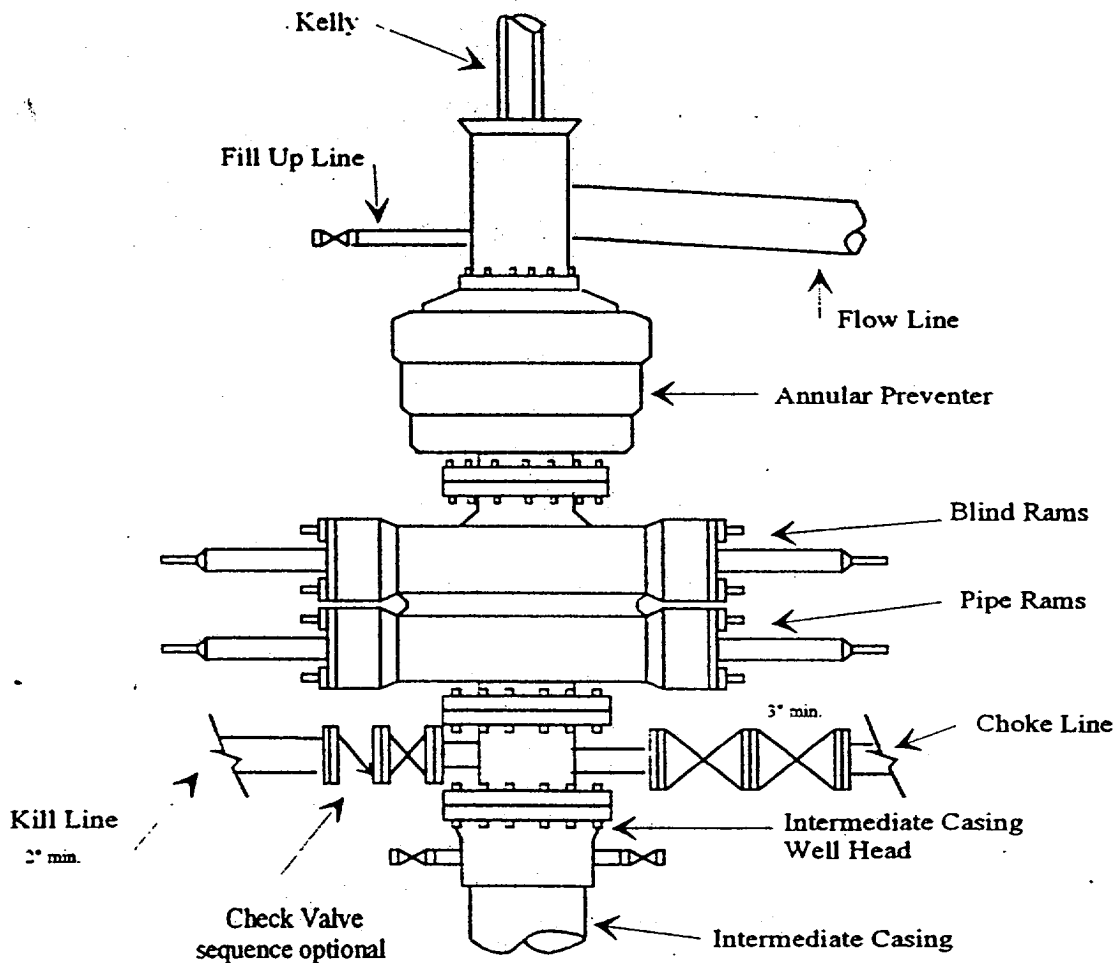
**NO ALLOWABLE WILL BE ASSIGNED TO THIS COMPLETION UNTIL ALL INTERESTS HAVE BEEN CONSOLIDATED
 OR A NON-STANDARD UNIT HAS BEEN APPROVED BY THE DIVISION**

				OPERATOR CERTIFICATION I hereby certify the the information contained herein is true and complete to the best of my knowledge and belief. <u>Clifton R. May</u> Signature Clifton R. May Printed Name Regulatory Agent Title September 19, 2002 Date
				SURVEYOR CERTIFICATION I hereby certify that the well location shown on this plat was plotted from field notes of actual surveys made by me or under my supervision, and that the same is true and correct to the best of my belief. 9/12/2002 Date Surveyed <u>Herschel L. Jones</u> Signature of Professional Surveyor
				Certificate No. <u>Herschel L. Jones RLS 3640</u> LOTUS PROFESSIONAL LAND SURVEYING COMPANY

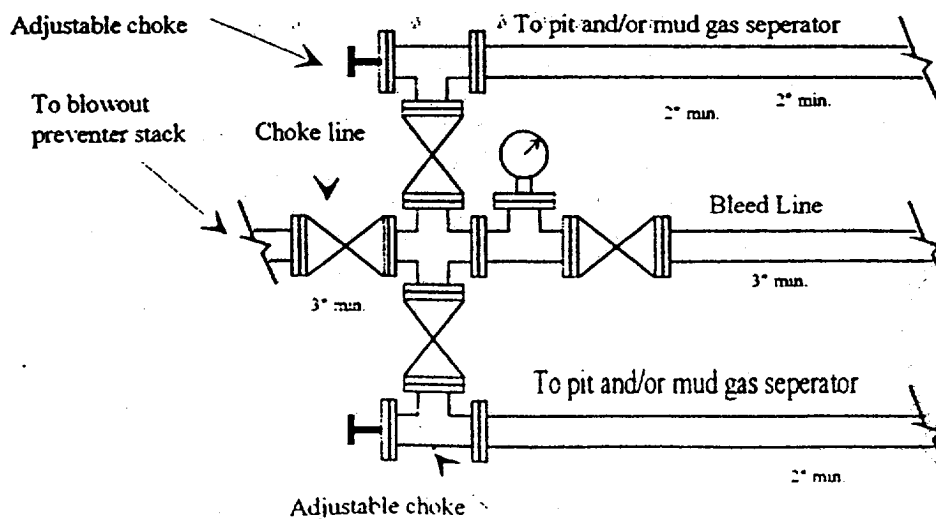


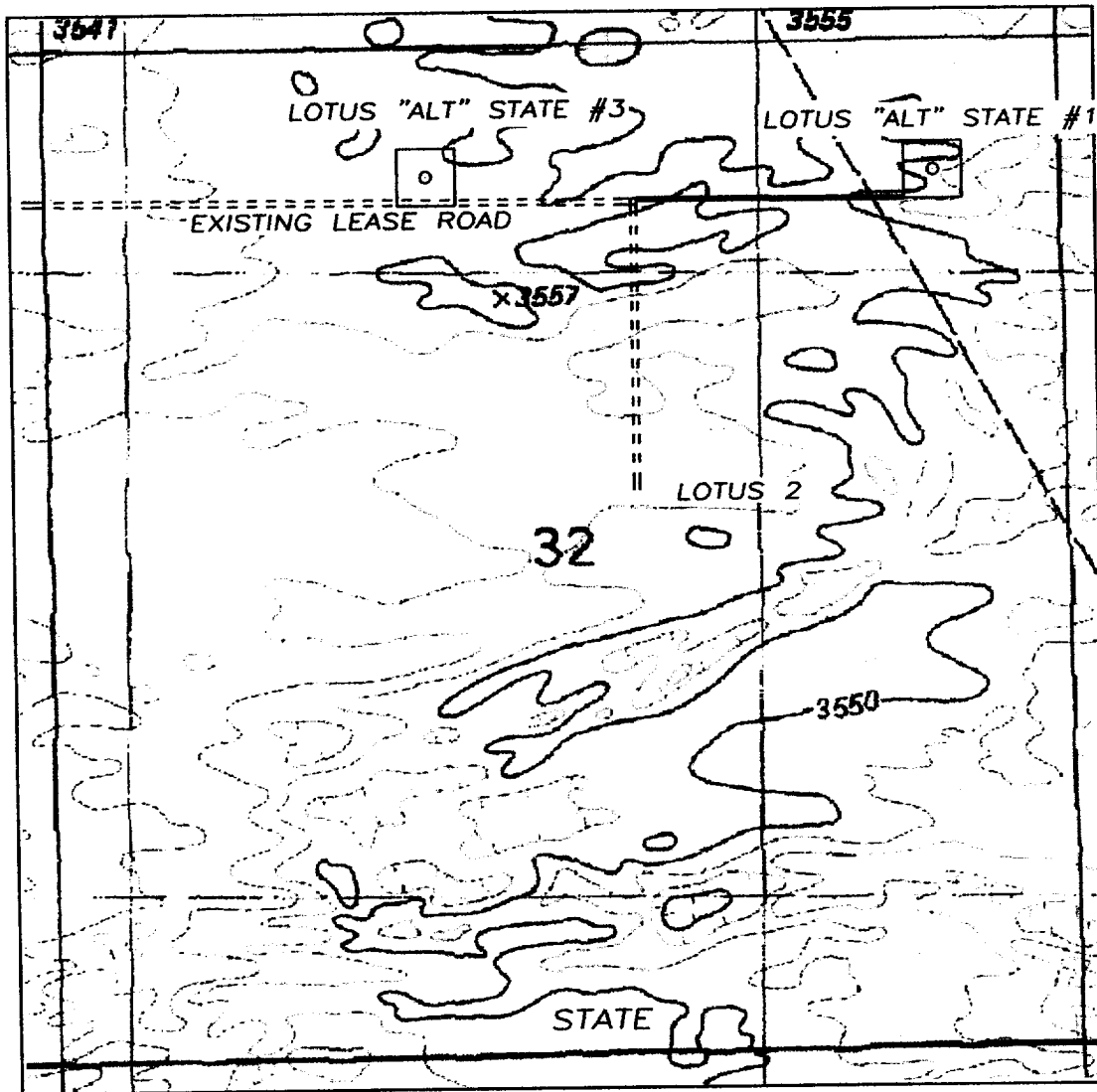
ates Petroleum Corporation
Typical 3,000 psi Pressure System
Schematic
Annular with Double Ram Preventer Stack

BOP-3



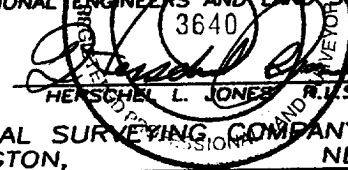
Typical 3,000 psi choke manifold assembly with at least these minimum features





1000' 0 1000' 2000'
Scale 1" = 1000'

THE PREPARATION OF THIS PLAT AND THE PERFORMANCE OF THE SURVEY UPON WHICH IT IS BASED WERE DONE UNDER MY DIRECTION AND THE PLAT ACCURATELY DEPICTS THE RESULTS OF SAID SURVEY AND MEETS THE REQUIREMENTS OF THE STANDARDS FOR LAND SURVEYS IN NEW MEXICO AS ADOPTED BY THE NEW MEXICO STATE BOARD OF REGISTRATION FOR PROFESSIONAL ENGINEERS AND LAND SURVEYORS.



GENERAL SURVEYING COMPANY P.O. BOX 1928
LOVINGTON, NEW MEXICO 88260

YATES PETROLEUM CORP.

LEASE ROAD TO ACCESS THE YATES LOTUS
"ALT" STATE #1 WELL, LOCATED IN SECTION 32,
TOWNSHIP 22 SOUTH, RANGE 32 EAST, NMPM,
LEA COUNTY, NEW MEXICO.

Survey Date: 9/12/2002	Sheet 1 of 1 Sheets
Drawn By: Ed Blavins	W.O. Number
Date: 9/13/02	Scale 1" = 1000' LOTUS 3