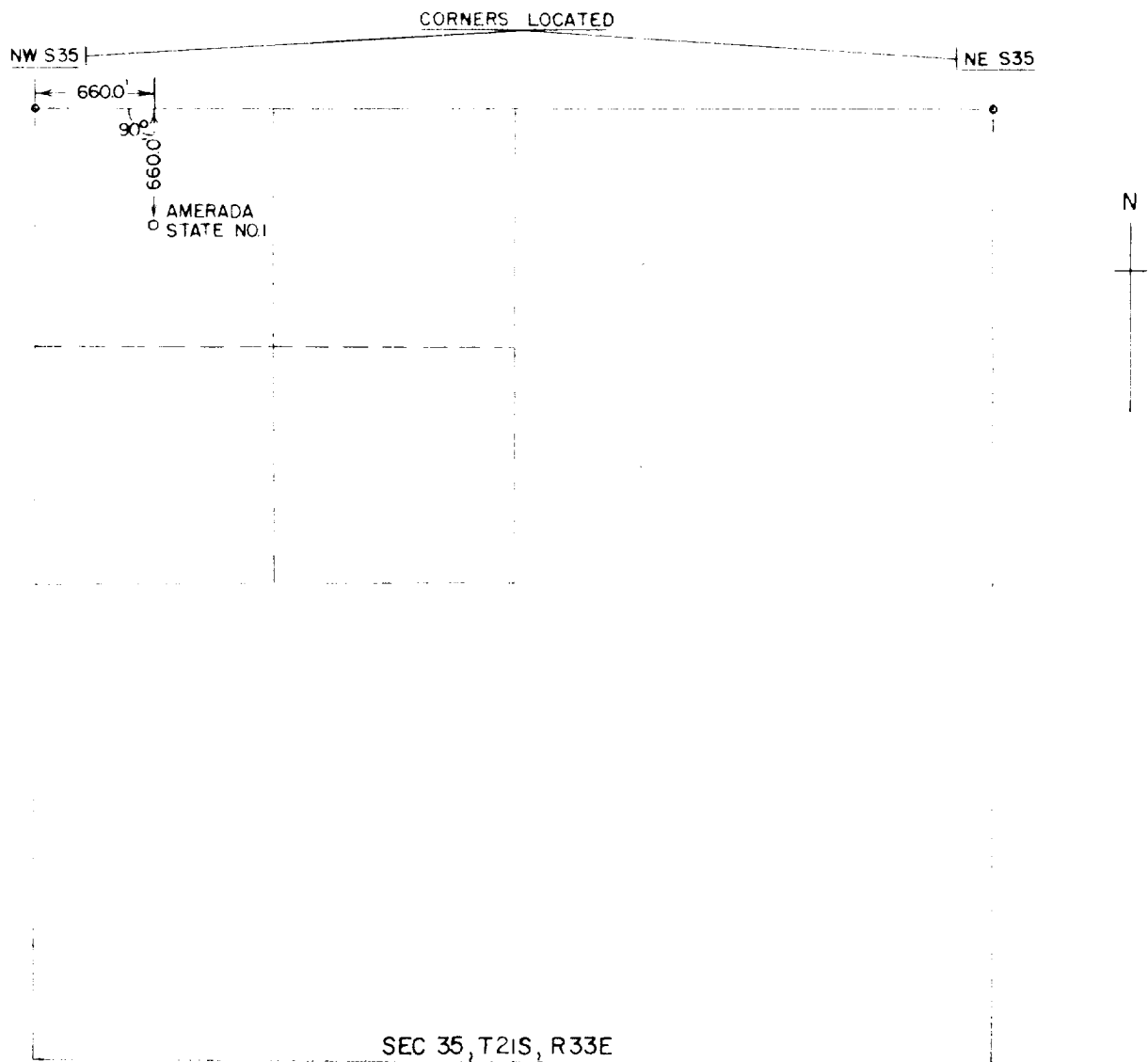


OPERATOR HUDSON & HUDSON  
LEASE AMERADA - STATE  
LOCATION NO. 1  
COUNTY LEA STATE NEW MEXICO

DATE 6-10-54  
SCALE 1"=1000'



I CERTIFY THAT THE ABOVE PLAT WAS CONSTRUCTED  
FROM NOTES TAKEN BY ME IN THE FIELD AND IS  
TRUE AND CORRECT TO THE BEST OF MY KNOWLEDGE  
AND BELIEF.

*Ben T. Phillips, Jr.*

BEN T. PHILLIPS, JR., R.L.S.