

NEW KICO OIL CONSERVATION COMMISSION
WELL LOCATION AND ACREAGE DEDICATION PLAT

Form C-102
Supersedes C-128
Effective 1-1-65

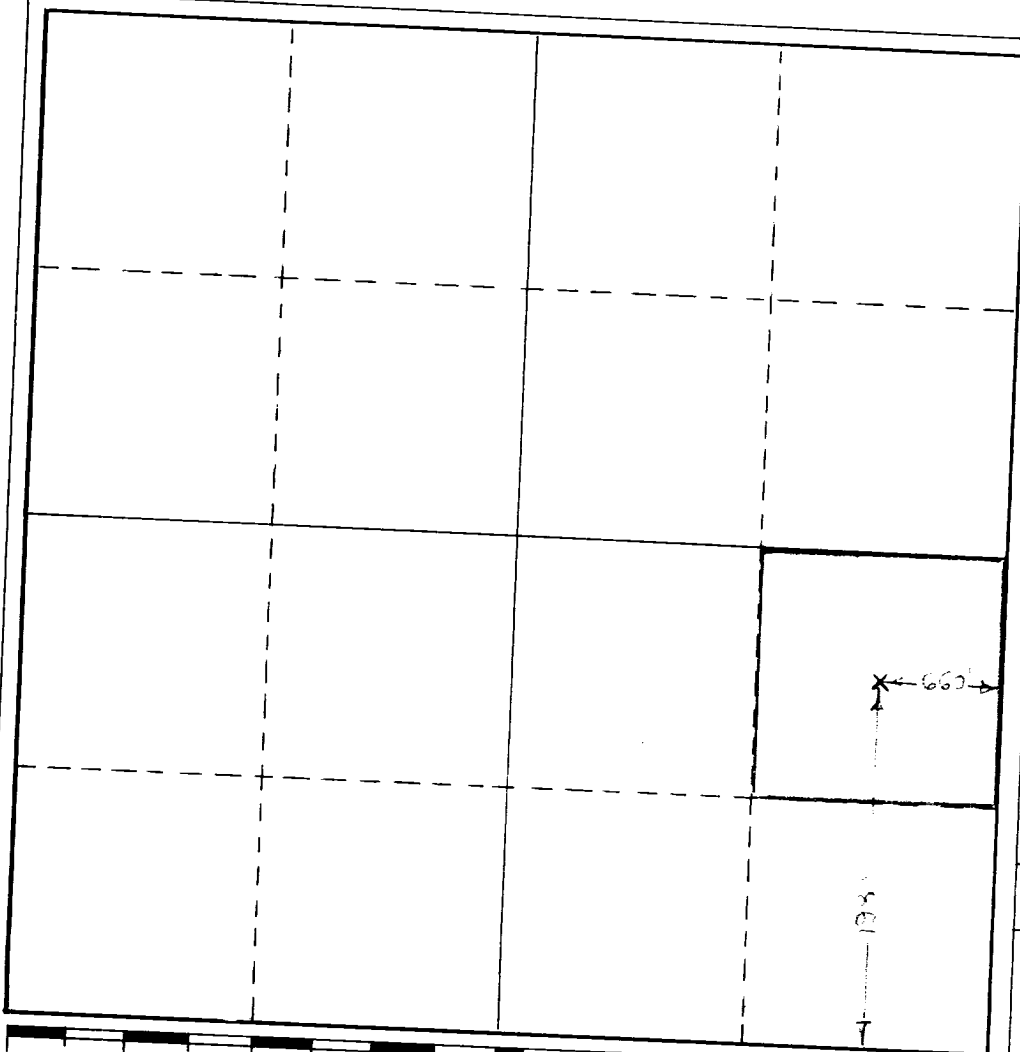
All distances must be from the outer boundaries of the Section.

Operator The Superior Oil Company				Lease State "175"		Well No. 1
Unit Letter I	Section 11	Township 21-S	Range 35-E	County Lea		
Actual Footage Location of Well: 660 feet from the East line and 1980 feet from the South line						
Ground Level Elev. 3595'	Producing Formation Seven Rivers		Pool Eumont Pool		Dedicated Acreage: 40 Acres	

1. Outline the acreage dedicated to the subject well by colored pencil or hachure marks on the plat below.
2. If more than one lease is dedicated to the well, outline each and identify the ownership thereof (both as to working interest and royalty).
3. If more than one lease of different ownership is dedicated to the well, have the interests of all owners been consolidated by communitization, unitization, force-pooling, etc?

☐ Yes ☐ No If answer is "yes," type of consolidation _____
If answer is "no," list the owners and tract descriptions which have actually been consolidated. (Use reverse side of this form if necessary.) _____

No allowable will be assigned to the well until all interests have been consolidated (by communitization, unitization, forced-pooling, or otherwise) or until a non-standard unit, eliminating such interests, has been approved by the Commission.



CERTIFICATION

I hereby certify that the information contained herein is true and complete to the best of my knowledge and belief.

Name
Dillard J. King
Position
Sr. Engineering Asst.
Company
The Superior Oil Company

Date
August 21, 1979

I hereby certify that the well location shown on this plat was plotted from field notes of actual surveys made by me or under my supervision, and that the same is true and correct to the best of my knowledge and belief.

Date Surveyed

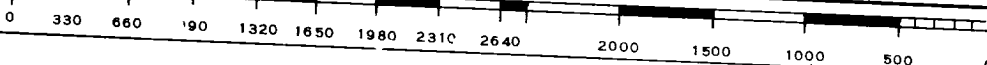
July 6, 1955

Registered Professional Engineer and/or Land Surveyor

See original document

Certificate No.

No. 1317



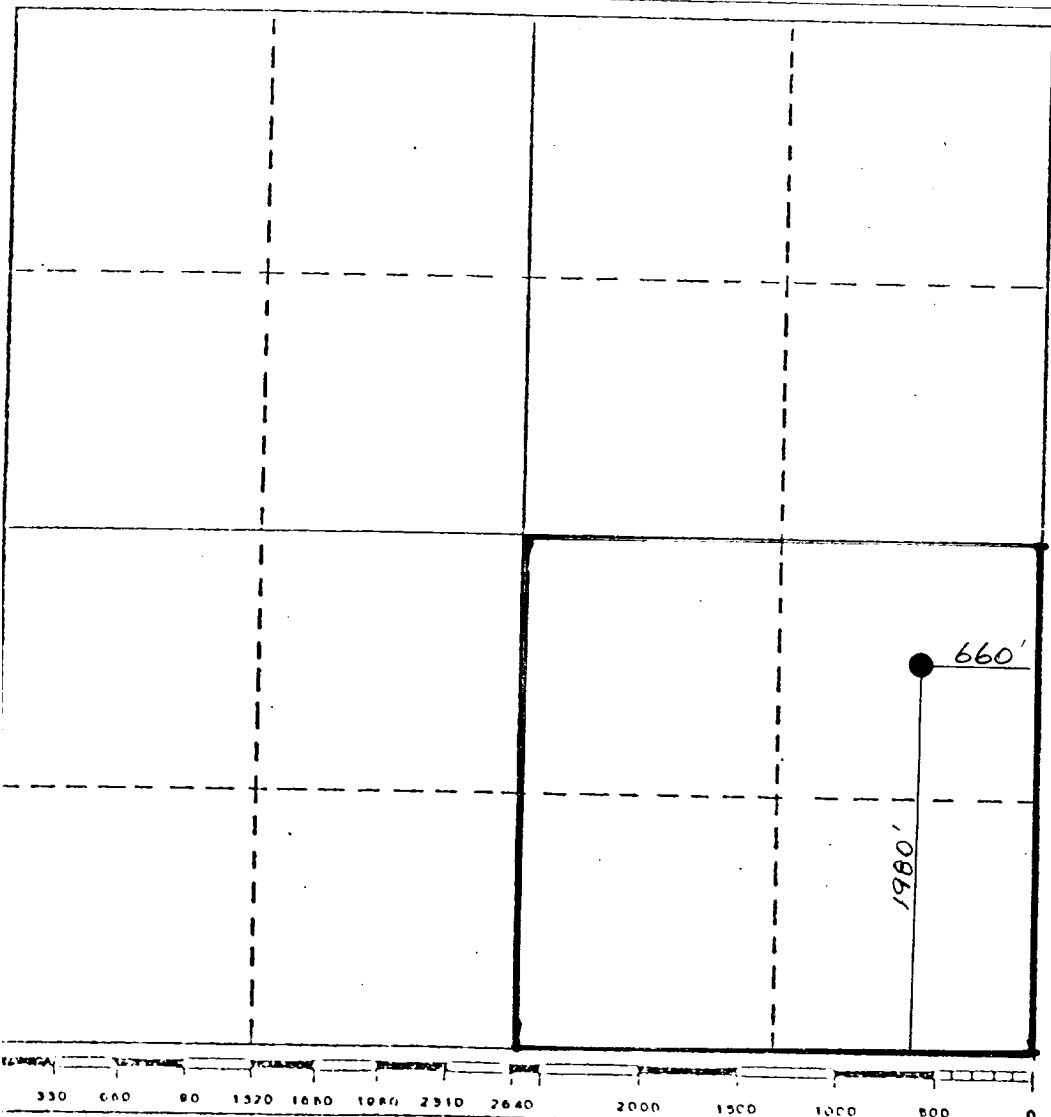
All distances must be from the outer boundaries of the Section.

Operator The Superior Oil Company			Lease State "175"		Well No. 1
Unit Letter I	Section 11	Township 21S	Range 35E	County Lea	
Actual Footage Location of Well: 660 feet from the east line and 1980 feet from the south line					
Ground Level Elev. 3595'	Producing Formation Seven Rivers		Pool Eumont Pool Gas		Dedicated Acreage: 160 Acres

1. Outline the acreage dedicated to the subject well by colored pencil or hatchure marks on the plat below.
2. If more than one lease is dedicated to the well, outline each and identify the ownership thereof (both as to working interest and royalty).
3. If more than one lease of different ownership is dedicated to the well, have the interests of all owners been consolidated by communitization, unitization, force-pooling, etc?
☐ Yes ☐ No If answer is "yes," type of consolidation _____

If answer is "no," list the owners and tract descriptions which have actually been consolidated. (Use reverse side of this form if necessary.) _____

No allowable will be assigned to the well until all interests have been consolidated (by communitization, unitization, forced-pooling, or otherwise) or until a non-standard unit, eliminating such interests, has been approved by the Division.



CERTIFICATION

I hereby certify that the information contained herein is true and complete to the best of my knowledge and belief.

Name
John G. E. Tate
Position
Production Superintendent
Company
The Superior Oil Company
Date
8-9-82

I hereby certify that the well location shown on this plat was plotted from field notes of actual surveys made by me or under my supervision, and that the same is true and correct to the best of my knowledge and belief.

July 6, 1955

Date Surveyed

Registered Professional Engineer and/or Land Surveyor

See Original Document

Certificate No.

1313

RECEIVED

AUG 12 1982

C.I.D.
HOBBY OFFICE

1

NEW MEXICO
OIL CONSERVATION COMMISSION

Gas Well Plat

HOBBS OFFICE 000
Date August 30, 1955

The Superior Oil Company
Operator

State 175
Lease

1955 AUG 21-175 9:59
Well No.

Name of Producing Formation Basal Yates

Extension of Eumont h
Pool been requested

No. Acres Dedicated to the Well 160

SECTION 11 TOWNSHIP 21S RANGE 35E

			X

I hereby certify that the information given above is true and complete to the best of my knowledge.

Name [Signature]
Position Gas Engineer
Representing The Superior Oil Company
Address Midland, Texas

(over)

INSTRUCTIONS

1. Is this gas well a dual completion? Yes **X** No
2. If the answer to Question 1 is Yes, are there any other dually completed wells within the dedicated acreage? Yes No **X**

A separate plat must be filed for each gas well, outlining the area dedicated to such well and showing the location of all other wells (oil and gas) within the outlined area.

Mail in duplicate to the district office for the district in which the well is located.