

NEW MEXICO OIL CONSERVATION COMMISSION

Santa Fe, New Mexico

NOTICE OF INTENTION TO DRILL OR RECOMPLETE

Notice must be given to the District Office of the Oil Conservation Commission and approval obtained before drilling or recompletion begins. If changes in the proposed plan are considered advisable, a copy of this notice showing such changes will be returned to the sender. Submit this notice in QUINTUPPLICATE. One copy will be returned following approval. See additional instructions in Rules and Regulations of the Commission.

Hobbs, New Mexico

(Place)

April 2, 1957

(Date)

OIL CONSERVATION COMMISSION  
SANTA FE, NEW MEXICO

Gentlemen:

You are hereby notified that it is our intention to commence the (Drilling) (Recompletion) of a well to be known as

Shell Oil Company

(Company or Operator)

State of

(Lease)

Well No. 2-1

in

(Unit)

The well is

located 2310 feet from the north line and 990 feet from the east

line of Section 24, T. 21-N, R. 35-E, NMPM.

(GIVE LOCATION FROM SECTION LINE)

Summit

Pool

Lee

County

R-35-E

D	C	B	A
E	F	G	H
L	K	J	I
M	N	O	P

If State Land the Oil and Gas Lease is No. R-1400

If patented land the owner is

Address

We propose to drill well with drilling equipment as follows: Rotary Tools

The status of plugging bond is Blanket

Drilling Contractor Valma Petroleum Corp.

We intend to complete this well in the Seven Rivers

formation at an approximate depth of 3940 feet.

CASING PROGRAM

We propose to use the following strings of Casing and to cement them as indicated:

Size of Hole	Size of Casing	Weight per Foot	New or Second Hand	Depth	Sacks Cement
11"	8 5/8"	32.4	new	300	300
7 7/8"	5 1/2"	15.5	new	3860	750

If changes in the above plans become advisable we will notify you immediately.

ADDITIONAL INFORMATION (If recompletion give full details of proposed plan of work.)

This is to be a replacement well for State G-2

Approved, 1957  
Except as follows:

OIL CONSERVATION COMMISSION

By E. J. Fischer

Title

Sincerely yours,

Shell Oil Company

(Company or Operator)

By B. Nevill Original signed by B. Nevill

Position Division Exploitation Engineer  
Send Communications regarding well to

Name Shell Oil Company

Address Box 1957

Hobbs, New Mexico

NEW MEXICO  
OIL CONSERVATION COMMISSION

Form C-128

Well Location and/or Gas Proration Plat

Date April 2, 1957

Operator Shell Oil Company Lease State 0

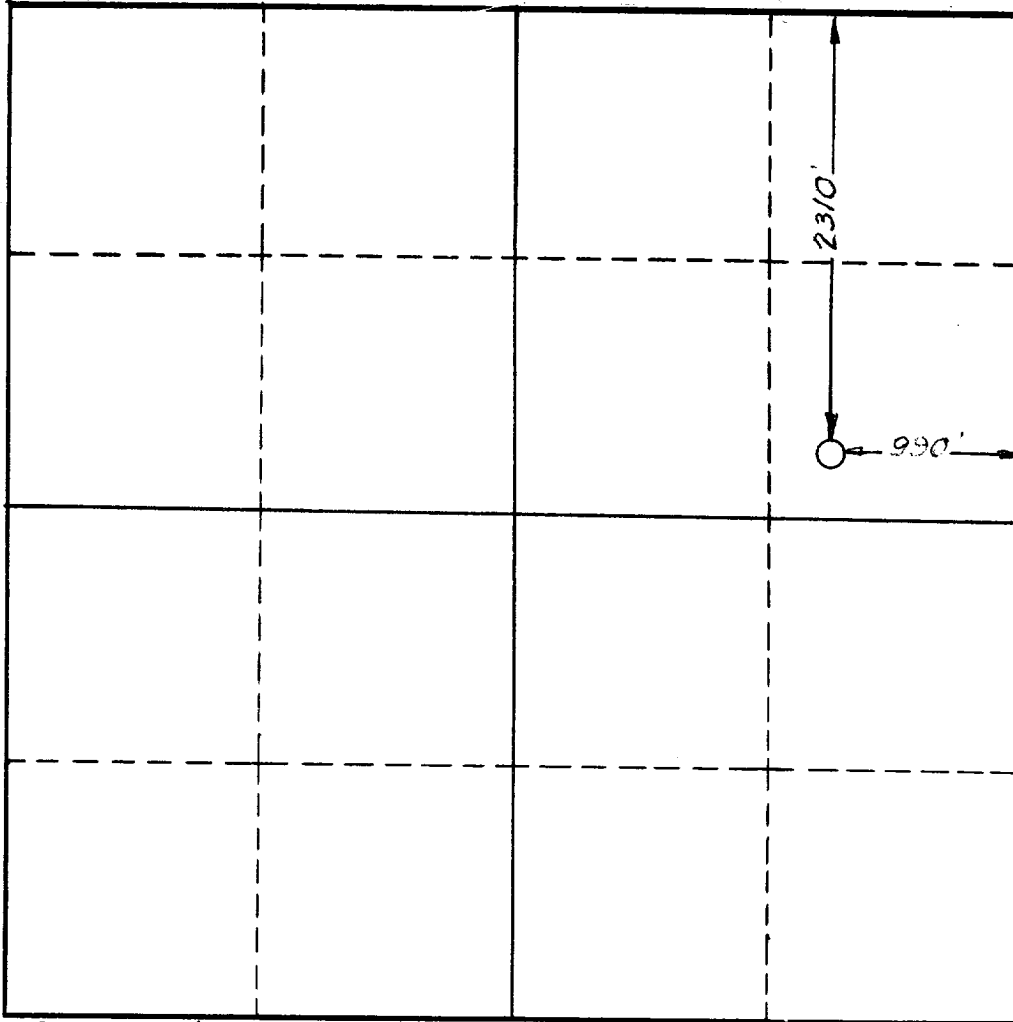
Well No. 2-A Section 24 Township 21-S Range -35-E NMPM

Located 2310 Feet From north Line, 990 Feet From east Line,

Lee County, New Mexico. G. L. Elevation not available

Name of Producing Formation Seven Rivers Pool Recent Dedicated Acreage 40

(Note: All distances must be from outer boundaries of Section)



SCALE: 1"=1000'

1. Is this Well a Dual Comp. ? Yes    No
2. If the answer to Question 1 is yes, are there any other dually completed wells within the dedicated acreage? Yes    No

This is to certify that the above plat was prepared from field notes of actual surveys made by me or under my supervision and that the same are true and correct to the best of my knowledge and belief.

Name B. Revell  
Position Division Exploitation Engineer  
Representing Shell Oil Company  
Address Box 1957, Hobbs, New Mexico

Date Surveyed 3-19-57  
Paul Shepard  
Registered Professional Engineer and/or  
Land Surveyor