

District I
PO Box 1988, Hobbs, NM 88241-1988
District II
PO Drawer DD, Aztec, NM 88211-0719
District III
1000 Rio Bravo Rd., Aztec, NM 87410
District IV
PO Box 2088, Santa Fe, NM 87504-2088

State of New Mexico
Energy, Minerals & Natural Resources Department

OIL CONSERVATION DIVISION
PO Box 2088
Santa Fe, NM 87504-2088

Form C-102
Revised February 21, 1994
Instructions on back
Submit to Appropriate District Office
State Lease - 4 Copies
Fee Lease - 3 Copies

☐ AMENDED REPORT

WELL LOCATION AND ACREAGE DEDICATION PLAT

1 API Number 30-025-04474		2 Pool Code 76480		3 Pool Name Eumont Yates 7 Rivers Queen Gas		
4 Property Code 003061		5 Property Name Meyer B-4			6 Well Number 14	
7 OGRID No. 005073		8 Operator Name CONOCO INC.			9 Elevation	

10 Surface Location

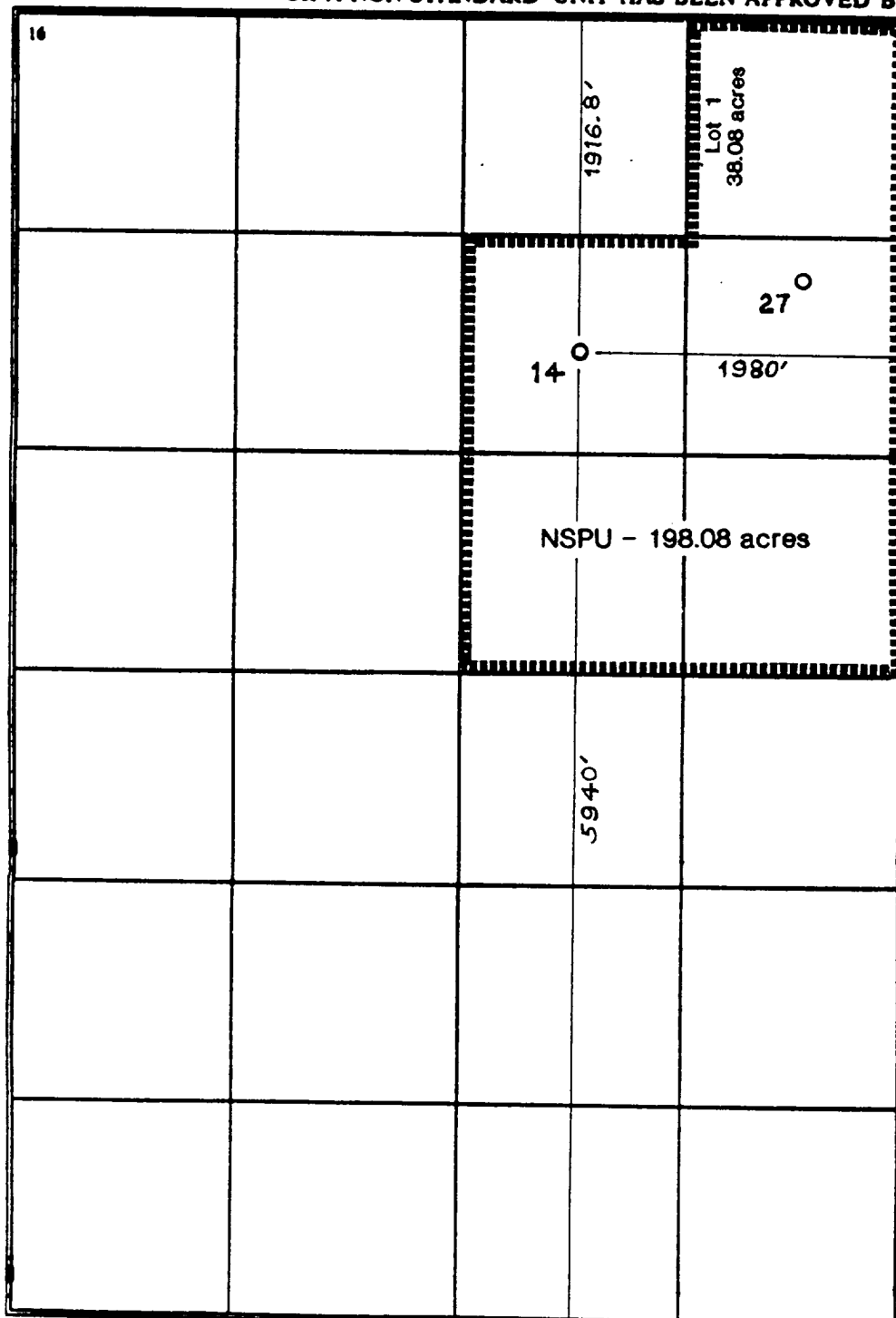
UL or lot no. G	Section 4	Township 21S	Range 36E	Lot Idn	Feet from the 1916.8	North/South line North	Feet from the 1980	East/West line East	County Lea
--------------------	--------------	-----------------	--------------	---------	-------------------------	---------------------------	-----------------------	------------------------	---------------

11 Bottom Hole Location If Different From Surface

UL or lot no.	Section	Township	Range	Lot Idn	Feet from the	North/South line	Feet from the	East/West line	County
---------------	---------	----------	-------	---------	---------------	------------------	---------------	----------------	--------

12 Dedicated Acres 198.08	13 Joint or Infill	14 Consolidation Code	15 Order No.
------------------------------	--------------------	-----------------------	--------------

NO ALLOWABLE WILL BE ASSIGNED TO THIS COMPLETION UNTIL ALL INTERESTS HAVE BEEN CONSOLIDATED
OR A NON-STANDARD UNIT HAS BEEN APPROVED BY THE DIVISION



17 OPERATOR CERTIFICATION

I hereby certify that the information contained herein is true and complete to the best of my knowledge and belief

Jerry W. Hoover
Signature
Jerry W. Hoover
Printed Name
Sr. Conservation Coordinator
Title
6/8/94
Date

18 SURVEYOR CERTIFICATION

I hereby certify that the well location shown on this plat was plotted from field notes of actual surveys made by me or under my supervision, and that the same is true and correct to the best of my belief.

Date of Survey
Signature and Seal of Professional Surveyor:

Certificate Number