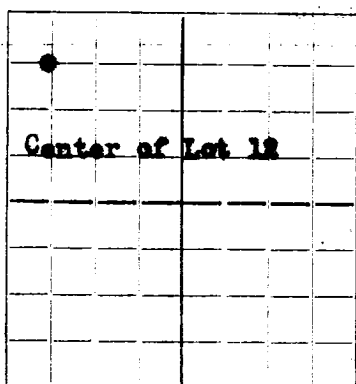


NEW MEXICO OIL CONSERVATION COMMISSION

Santa Fe, New Mexico



WELL RECORD

Mail to Oil Conservation Commission, Santa Fe, New Mexico, or its proper agent not more than twenty days after completion of well. Follow instructions in the Rules and Regulations of the Commission. Indicate questionable data by following it with (?). SUBMIT IN TRIPLICATE.

AREA 640 ACRES
LOCATE WELL CORRECTLY

Gulf Oil Corporation

Orcutt

Company or Operator

Lease

Well No. 5 in NW NW of Sec. 5, T. 21S

R. 16E, N. M. P. M., 16th, Field, 16th, County.

Well is 660 feet south of the North line and 660 feet west of the East line of NW NW

If State land the oil and gas lease is No. E-244 Assignment No.

If patented land the owner is Address

If Government land the permittee is Address

The Lessee is Gulf Oil Corporation Address Tulsa, Oklahoma.

Drilling commenced August 11th, 1936 Drilling was completed Sept. 11th, 1936

Name of drilling contractor Gulf Rotary Drill #1 Address

Elevation above sea level at top of casing 5567 feet.

The information given is to be kept confidential until 19

OIL SANDS OR ZONES

No. 1, from 3710 to 3890 No. 4, from to

No. 2, from to No. 5, from to

No. 3, from to No. 6, from to

IMPORTANT WATER SANDS

Include data on rate of water inflow and elevation to which water rose in hole.

No. 1, from Rotary Hole to feet.

No. 2, from to feet.

No. 3, from to feet.

No. 4, from to feet.

CASING RECORD

SIZE	WEIGHT PER FOOT	THREADS PER INCH	MAKE	AMOUNT	KIND OF SHOE	CUT & FILLED FROM	PERFORATED FROM TO	PURPOSE
16"OD	70	8	Lapweld	56'	?			
7-5/8	22	8	"	1184'				
5-1/2	17	10	"	5767'				

MUDDING AND CEMENTING RECORD

SIZE OF HOLE	SIZE OF CASING	WHERE SET	NO. SACKS OF CEMENT	METHOD USED	MUD GRAVITY	AMOUNT OF MUD USED
20"	16"	56'	50	By Hand		
9-7/8	7-5/8	1184'	620	Halliburton		
6-3/4	5-1/2	5767'	300	"		

PLUGS AND ADAPTERS

Heaving plug—Material Length Depth Set

Adapters—Material Size

RECORD OF SHOOTING OR CHEMICAL TREATMENT

SIZE	SHELL USED	EXPLOSIVE OR CHEMICAL USED	QUANTITY	DATE	DEPTH SHOT OR TREATED	DEPTH CLEANED OUT
		Hydro-Chloric Acid	2000 Gal.	9-8-36		

Results of shooting or chemical treatment

RECORD OF DRILL-STEM AND SPECIAL TESTS

If drill-stem or other special tests or deviation surveys were made, submit report on separate sheet and attach hereto.

TOOLS USED

Rotary tools were used from 0 feet to 5890 feet, and from feet to feet

Cable toops were used from feet to feet, and from feet to feet

PRODUCTION

Put to producing September 16th, 1936

The production of the first 24 hours was 366 barrels of fluid of which % was oil: %

emulsion; % water; and % sediment. Gravity, Be

If gas well, cu. ft. per 24 hours Gallons gasoline per 1,000 cu. ft. of gas

Rock pressure, lbs. per sq. in.

EMPLOYEES

, Driller , Driller

, Driller , Driller

FORMATION RECORD ON OTHER SIDE

I hereby swear or affirm that the information given herewith is a complete and correct record of the well and all work done on it so far as can be determined from available records.

Subscribed and sworn to before me this 16th, 1936, Tulsa, Oklahoma, October 16th, 1936

day of October, 1936

Name J. D. Dander

Position General Superintendent

Representing Gulf Oil Corporation

Notary Public

Company or Operator.

My Commission expires March 16, 1940

Address Tulsa, Oklahoma.

FORMATION RECORD

FROM	TO	THICKNESS IN FEET	FORMATION
0	39'		Sand
	133		Sand
	305		Shale and shells
	315		Red Shale and shells
	382		Shale and shells
	425		Red Shale and shells
	565		Red Shale
	760		Red Shale and shells
	780		Shale and shells
	822		Red Bed and shells
	903		Hard sand and Anhydrite
	960		Shale break and sand
	1014		Red Bed and shells
	1067		Red Bed and sandy shells
	1100		Red Shale and sand
	1130		Red Shale and sand
	1145		Red shale and Anhydrite
	1172		Anhydrite
	1203		Anhydrite
	1206		Salt
	1222		Salt
	1554		Salt and Anhydrite
	1653		Salt
	2165		Salt and Anhydrite
	2347		Salt
	2589		Anhydrite and salt
	2632		Lime
	2902		Anhydrite
	3101		Lime
	3116		Lime
	3178		Lime
	3197		Hard Brown lime
	3320		Lime