

NEW MEXICO OIL CONSERVATION COMMISSION WELL LOCATION AND ACREAGE DEDICATION PLAT

Form C-102
Supersedes C-7
Effective 1-1-61

All distances must be from the outer boundaries of the Section.

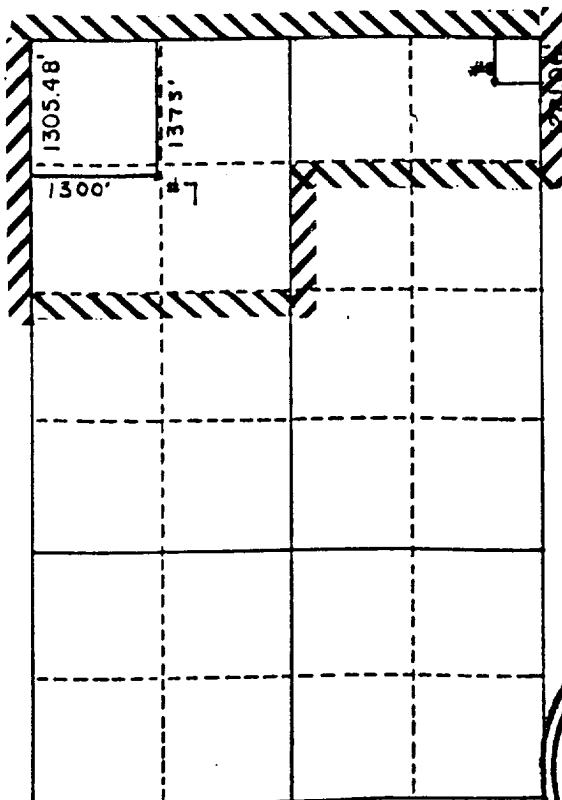
Operator CHEVRON U S A , INC.			Lease HEASLAY STATE		Well No. 7
Unit Letter F	Section 5	Township 21 SOUTH	Range 36 EAST	County LEA	
Actual Footage Location of Well: 1300 feet from the WEST line and 1373 feet from the North line					
Ground Level Elev.	Producing Formation YATES SEVEN RIVER QUEEN		Pool FUMONT GAS POOL		Dedicated Acreage 236.7 Acres

1. Outline the acreage dedicated to the subject well by colored pencil or hachure marks on the plat below.
2. If more than one lease is dedicated to the well, outline each and identify the ownership thereof (both as to working interest and royalty).
3. If more than one lease of different ownership is dedicated to the well, have the interests of all owners been consolidated by communitization, unitization, force-pooling, etc?

☐ Yes ☐ No If answer is "yes," type of consolidation _____

If answer is "no," list the owners and tract descriptions which have actually been consolidated. (Use reverse side of this form if necessary.) _____

No allowable will be assigned to the well until all interests have been consolidated (by communitization, unitization, forced-pooling, or otherwise) or until a non-standard unit, eliminating such interests, has been approved by the Commission.



CERTIFICATION

I hereby certify that the information contained herein is true and complete to the best of my knowledge and belief.

Name
E. O. Doherty
Position
T.A. Delg.
Company
CHEVRON USA INC.
Date
1/29/91

I hereby certify that the well location shown on this plat was plotted from field notes of actual surveys made by me or under my supervision, and that the same is true and correct to the best of my knowledge and belief.



Date Surveyed
12-28-90
Registered Professional Engineer
and/or Land Surveyor
John M. West

NEW MEXICO
OIL CONSERVATION COMMISSION

Gas Well P^{at}

Date October 20 1953

Warren Pet. Corp., Oil Division New Mexico State

Operator

Lease

Well No. OCT 20 1953

Name of Producing Formation Penrose

Pool

No. Acres Dedicated to the Well 236.76

SECTION 5 TOWNSHIP 21 S RANGE 36 E

5	6	2	3
7	4	1	

I hereby certify that the information given above is true and complete to the best of my knowledge.

Name F. H. Lavelle
Position Division Manager
Representing Warren Pet. Corp. Oil Div.
Address Drawer H, Seminole, Texas

(over)

INSTRUCTIONS

1. Is this gas well a dual completion? Yes _____ No **X**
2. If the answer to Question 1 is Yes, are there any other dually completed wells within the dedicated acreage? Yes _____ No _____

A separate plat must be filed for each gas well, outlining the area dedicated to such well and showing the location of all other wells (oil and gas) within the outlined area.

Mail in duplicate to the district office for the district in which the well is located.