

By W. H. Armstrong
Title Oil & Gas Inspector

NEW MEXICO OIL CONSERVATION COMMISSION

Santa Fe, New Mexico

NOTED OFFICE COO

It is necessary that Form C-104 be approved before this form can be approved an an *initial* allowable be assigned to any completed Oil or Gas well. Submit this form in QUADRUPLICATE.

RECEIVED SEP 20 AM 7:45

CERTIFICATE OF COMPLIANCE AND AUTHORIZATION
TO TRANSPORT OIL AND NATURAL GAS

Company or Operator Gulf Oil Corporation Lease H. T. Orcutt

Address Box 2167, Hobbs, N. M. Fort Worth, Texas
(Local or Field Office) (Principal Place of Business)

Unit 0, Well(s) No. 6, Sec. 6, T. 21-S, R. 34-E, Pool Eunice

County Lea Kind of Lease: Private

If Oil well Location of Tanks on lease

Authorized Transporter Phillips Petroleum Co. Address of Transporter

Eunice, N. M. Bartlesville, Okla.
(Local or Field Office) (Principal Place of Business)

Per cent of Oil or Natural Gas to be Transported 100 Other Transporters authorized to transport Oil or Natural Gas from this unit are

REASON FOR FILING: (Please check proper box)

NEW WELL ☐ CHANGE IN OWNERSHIP ☐

CHANGE IN TRANSPORTER ☐ OTHER (Explain under Remarks) ☒

REMARKS:

File for casinghead gas

The undersigned certifies that the Rules and Regulations of the Oil Conservation Commission have been complied with.

Executed this the 22nd day of September 1954

Approved _____, 19____

OIL CONSERVATION COMMISSION

By _____

Title _____

Gulf Oil Corporation

By E. F. Gay

Title Area Supt. of Prod.

(See Instructions on Reverse Side)

INSTRUCTIONS

This form shall be executed and filed in QUADRUPLICATE with the District Office of the Oil Conservation Commission, covering each unit from which oil or gas is produced. A separate certificate shall be filed for each transporter authorized to transport oil or gas from a unit. After said certificate has been approved by the Oil Conservation Commission, one copy shall be forwarded to the transporter, one copy returned to the producer, and two copies retained by the Oil Conservation Commission.

A new certificate shall be filed to cover each change in operating ownership and each change in the transporter, except that in the case of a temporary change in the transporter involving less than the allowable production for one proration period, the operator shall in lieu of filing a new certificate notify the Oil Conservation Commission District Office, and the transporter authorized by certificate on file with the Commission, by letter of the estimated amount of oil or gas to be moved by the transporter temporarily moving oil or gas from the unit and the name of such temporary transporter and a copy of such notice shall also be furnished such temporary transporter. Such temporary transporter shall not move any more oil or gas than the estimated amount shown in said notice.

This certificate when properly executed and approved by the Oil Conservation Commission shall constitute a permit for pipe line connection and authorization to transport oil and gas from the property named therein and shall remain in full force and effect until

- (a) Operating ownership changes
- (a) The transporter is changed or
- (c) The permit is cancelled by the Commission.

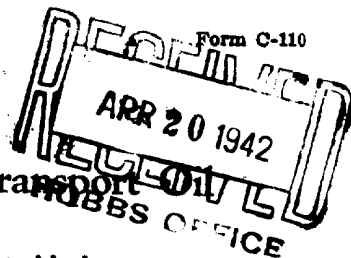
If any of the rules and regulations of the Oil Conservation Commission have not been complied with at the same time this report is filed, explain fully under the heading "REMARKS."

In all cases where this certificate is filed to cover a change in operating ownership or a change in the transporter designated to move oil or gas, show under "REMARKS" the previous owner or operator and the transporter previously authorized to transport oil or gas.

A separate report shall be filed to cover each producing unit as designated by the Oil Conservation Commission.

DUPLICATE

OIL CONSERVATION COMMISSION
STATE OF NEW MEXICO



Certificate of Compliance and Authorization to Transport

Company or Operator Gulf Oil Corp. Lease Oreutt A
Address Hobbs, N. M. Tulsa, Okla.
(Local or Field Office) (Principal Place of Business)
Unit Q Wells No. 6 Sec. 6 T 21S R 36E Field Eunice County Lea
Kind of Lease State Location of Tanks On lease
Transporter Gulf Refining Co. Address of Transporter Hobbs, N. M.
(Principal Place of Business) (Local or Field Office)
Percent of oil to be transported 100% Other transporters authorized to transport oil from this unit are 00%

REMARKS:

The undersigned certifies that the above rules and regulations of the Oil Conservation Commission have been complied with except as noted above and that gathering agent is authorized to transport the percentage of oil produced from the above-described property and that this authorization will be valid until further notice to the transporter named herein or until cancelled by the Oil Conservation Commission of New Mexico.

Executed this the 17 day of Apr., 194 2

Gulf Oil Corp.

(Company or Operator)

By

Title Dist. Supt.

State of New Mexico

County of Lea

ss.

Before me, the undersigned authority, on this day personally appeared C. G. Cummings known to me to be the person whose name is subscribed to the above instrument, who being by me duly sworn on oath states that he is authorized to make this report and has knowledge of the facts stated herein and that said report is true and correct.

Subscribed and sworn to before me, this the 17 day of APR., 194 2

Notary Public in and for Lea County, New Mexico

Approved: APR 20 1942, 194

My Commission expires Feb. 25-46

OIL CONSERVATION COMMISSION

By

OIL & GAS INSPECTOR

INSTRUCTIONS

This form shall be executed and filed in quadruplicate with the Oil Conservation Commission at Santa Fe, New Mexico, covering each unit from which oil is produced. A separate certificate shall be filed for each transporter authorized to transport oil from a unit. After said certificate has been approved by the Oil Conservation Commission, one copy shall be forwarded to the transporter, one copy returned to the producer, and two copies retained by the Oil Conservation Commission.

A new certificate shall be filed to cover each change in operating ownership and each change in the transporter, except that in the case of a temporary change in the transporter involving less than the allowable production for one month the operator shall, in lieu of filing a new certificate, notify the Oil Conservation Commission at Santa Fe, New Mexico, and the transporter authorized by certificate on file with the Commission, by letter of the estimated amount of oil to be moved by the transporter temporarily moving oil from the unit and the name of such temporary transporter and a copy of such notice shall also be furnished such temporary transporter. Such temporary transporter shall not move any more oil than the estimated amount shown in said notice.

This certificate when properly executed and approved by the Oil Conservation Commission shall constitute a permit for pipe line connection and authorization to transport oil from the property named therein and shall remain in full force and effect until

- (a) Operating ownership changes
- (b) The transporter is changed or
- (c) The permit is cancelled by the Commission

If any of the rules and regulations of the Oil Conservation Commission have not been complied with at the time this report is filed, explain fully under the heading "REMARKS."

In all cases where this certificate is filed to cover a change in operating ownership or a change in the transporter designated to move oil, show under "REMARKS" the previous owner or operator and the transporter previously authorized to transport oil.

A separate report shall be filed to cover each producing unit as designated by the Oil Conservation Commission.

DUPLICATE

OIL CONSERVATION COMMISSION
STATE OF NEW MEXICO

RECEIVED
DEC 23 1941
HOBBS OFFICE

Certificate of Compliance and Authorization to Transport Oil

Company or Operator Half Oil Corp Lease Grant A
Address Hobbs, New Mex. Tulsa, Okla.
(Local or Field Office) (Principal Place of Business)
Unit 0 Wells No. 6 Sec. 6 T. 216R S. 34N Field Marion County Lea
Kind of Lease State Location of Tanks on lease.
Transporter Atlantic Pipe Line Co Address of Transporter Hobbs, New Mex.
(Principal Place of Business) (Local or Field Office)
Percent of oil to be transported 100 Other transporters authorized to transport oil from this unit are 00 %
REMARKS:

The six wells on this lease are produced into a central tank and battery, per authority from the Oil Conservation Commission, No. 103.

The undersigned certifies that the above rules and regulations of the Oil Conservation Commission have been complied with except as noted above and that gathering agent is authorized to transport the percentage of oil produced from the above described property and that this authorization will be valid until further notice to the transporter named herein or until cancelled by the Oil Conservation Commission of New Mexico.

Executed this the 11 day of Dec, 194 1.

Half Oil Corp

(Name of Operator)

By [Signature]
Title District Supt.

State of New Mex.
County of Lea

Before me, the undersigned authority, on this day personally appeared G. C. Cummings known to me to be the person whose name is subscribed to the above instrument, who being by me duly sworn on oath states that he is authorized to make this report and has knowledge of the facts stated herein and that said report is true and correct.

Subscribed and sworn to before me, this the 11 day of Dec, 194 1

J. W. Garner

Notary Public in and for Lea County, New Mex.

Approved: DEC 23 1941, 194 1 My com. expires Feb 25-1942.

OIL CONSERVATION COMMISSION

By Roy Garbrough
OIL & GAS INSPECTOR

(See Instructions on Reverse Side)

INSTRUCTIONS

This form shall be executed and filed in quadruplicate with the Oil Conservation Commission at Santa Fe, New Mexico, covering each unit from which oil is produced. A separate certificate shall be filed for each transporter authorized to transport oil from a unit. After said certificate has been approved by the Oil Conservation Commission, one copy shall be forwarded to the transporter, one copy returned to the producer, and two copies retained by the Oil Conservation Commission.

A new certificate shall be filed to cover each change in operating ownership and each change in the transporter, except that in the case of a temporary change in the transporter involving less than the allowable production for one month the operator shall, in lieu of filing a new certificate, notify the Oil Conservation Commission at Santa Fe, New Mexico, and the transporter authorized by certificate on file with the Commission, by letter of the estimated amount of oil to be moved by the transporter temporarily moving oil from the unit and the name of such temporary transporter and a copy of such notice shall also be furnished such temporary transporter. Such temporary transporter shall not move any more oil than the estimated amount shown in said notice.

This certificate when properly executed and approved by the Oil Conservation Commission shall constitute a permit for pipe line connection and authorization to transport oil from the property named therein and shall remain in full force and effect until

- (a) Operating ownership changes
- (b) The transporter is changed or
- (c) The permit is cancelled by the Commission

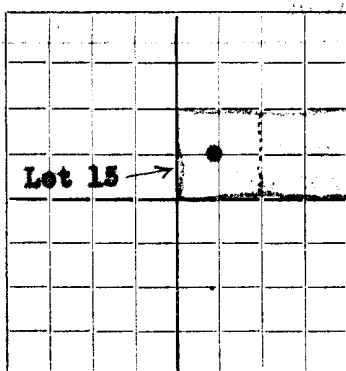
If any of the rules and regulations of the Oil Conservation Commission have not been complied with at the time this report is filed, explain fully under the heading "REMARKS."

In all cases where this certificate is filed to cover a change in operating ownership or a change in the transporter designated to move oil, show under "REMARKS" the previous owner or operator and the transporter previously authorized to transport oil.

A separate report shall be filed to cover each producing unit as designated by the Oil Conservation Commission.

NEW MEXICO OIL CONSERVATION COMMISSION

Santa Fe, New Mexico

AREA 640 ACRES
LOCATE WELL CORRECTLY

WELL RECORD

Mail to Oil Conservation Commission, Santa Fe, New Mexico, or its proper agent not more than twenty days after completion of well. Follow instructions in the Rules and Regulations of the Commission. Indicate questionable data by following it with (?). SUBMIT IN TRIPLICATE.

Gulf Oil Corporation **Orcutt**
Company or Operator
Well No. **6** in **Lot 15** of Sec. **6**, T. **21S**
R. **36E**, N. M. P. M., **Emise** Field, **Lea** County.
Well is _____ feet south of the North line and _____ feet west of the East line of **Lot 15**
If State land the oil and gas lease is No. **P-244** Assignment No. _____
If patented land the owner is _____, Address _____
If Government land the permittee is _____, Address _____
The Lessee is **Gulf Oil Corporation**, Address **Tulsa, Oklahoma.**
Drilling commenced **Oct. 7th,** 19 **36** Drilling was completed **Nov. 29th,** 19 **36**
Name of drilling contractor **Sparkman & Reusch**, Address **Tulsa, Oklahoma.**
Elevation above sea level at top of casing **5575** feet.
The information given is to be kept confidential until **?** 19 _____

OIL SANDS OR ZONES

No. 1, from **5730** to **5875** No. 4, from _____ to _____
Pay 5770'
No. 2, from _____ to _____ No. 5, from _____ to _____
No. 3, from _____ to _____ No. 6, from _____ to _____

IMPORTANT WATER SANDS

Include data on rate of water inflow and elevation to which water rose in hole.

No. 1, from _____ to _____ feet.
No. 2, from _____ to _____ feet.
No. 3, from _____ to _____ feet.
No. 4, from _____ to _____ feet.

CASING RECORD

SIZE	WEIGHT PER FOOT	THREADS PER INCH	MAKE	AMOUNT	KIND OF SHOE	CUT & FILLED FROM	PERFORATED FROM TO	PURPOSE
16"	70	8	Lapw.	34'				
7-5/8	22	8	"	1166'				
5-1/2	17	10	"	5767'				

MUDDING AND CEMENTING RECORD

SIZE OF HOLE	SIZE OF CASING	WHERE SET	NO. SACKS OF CEMENT	METHOD USED	MUD GRAVITY	AMOUNT OF MUD USED
	16"	34'	50	By Hand		
9-7/8	7-5/8	1166'	600	Halliburton		
6-3/4	5-1/2	5767'	175	"		

PLUGS AND ADAPTERS

Heaving plug—Material _____ Length _____ Depth Set _____
Adapters—Material _____ Size _____

RECORD OF SHOOTING OR CHEMICAL TREATMENT

SIZE	SHELL USED	EXPLOSIVE OR CHEMICAL USED	QUANTITY	DATE	DEPTH SHOT OR TREATED	DEPTH CLEANED OUT
		Hydro-chloric A.	2000	11-12-36		

Results of shooting or chemical treatment _____

RECORD OF DRILL-STEM AND SPECIAL TESTS

If drill-stem or other special tests or deviation surveys were made, submit report on separate sheet and attach hereto.

TOOLS USED

Rotary tools were used from **0** feet to **5875** feet, and from _____ feet to _____ feet
Cable toops were used from _____ feet to _____ feet, and from _____ feet to _____ feet

PRODUCTION

Put to producing **Nov. 16th**, 19 **36**
The production of the first 24 hours was **600** barrels of fluid of which _____ % was oil; _____ % emulsion; _____ % water; and _____ % sediment. Gravity, Be _____
If gas well, cu. ft. per 24 hours **464,000** Gallons gasoline per 1,000 cu. ft. of gas _____
Rock pressure, lbs. per sq. in. _____

EMPLOYEES

?, Driller _____, Driller
_____, Driller _____, Driller

FORMATION RECORD ON OTHER SIDE

I hereby swear or affirm that the information given herewith is a complete and correct record of the well and all work done on it so far as can be determined from available records.

Subscribed and sworn to before me this **16th**day of **December**, 19 **36***W. Evans*

Notary Public

Tulsa, Oklahoma. **Dec. 16th, 1936**

Place _____ Date _____
Name *W. Evans*
Position **General Superintendent**
Representing **Gulf Oil Corporation**

FORMATION RECORD

FROM	TO	THICKNESS IN FEET	FORMATION
0	41'		Sand and gravel
	216		sand, gravel and red rock
	345		red rock, shells and red bed
	654		red bed and shells
	738		red bed and red rock
	790		red rock
	945		red rock and shells
	1041		red bed and shells
	1157		red rock and shells
	1150		red bed
	1250		anhydrite
	1273		salt
	1382		anhydrite and salt
	1517		salt
	1829		salt and potash
	1988		salt
	2110		salt and potash
	2370		salt and shells
	2540		salt and potash
	2850		anhydrite
	3873		lime