

**NEW MEXICO OIL CONSERVATION COMMISSION
WELL LOCATION AND ACREAGE DEDICATION PLAT**

Form C-102
Supersedes C-128
Effective 1-1-65

All distances must be from the outer boundaries of the Section.

Operator GULF OIL CORPORATION			Lease Campbell-Houston Gas Com		Well No. 4
Unit Letter J	Section 7	Township 21-S	Range 36-E	County Lea	
Actual Footage Location of Well:					
1980 feet from the South line and		1980 feet from the East line			
Ground Level Elev. 3594'	Producing Formation Seven Rivers Queen	Pool Eumont Gas		Dedicated Acres 310 Acres	

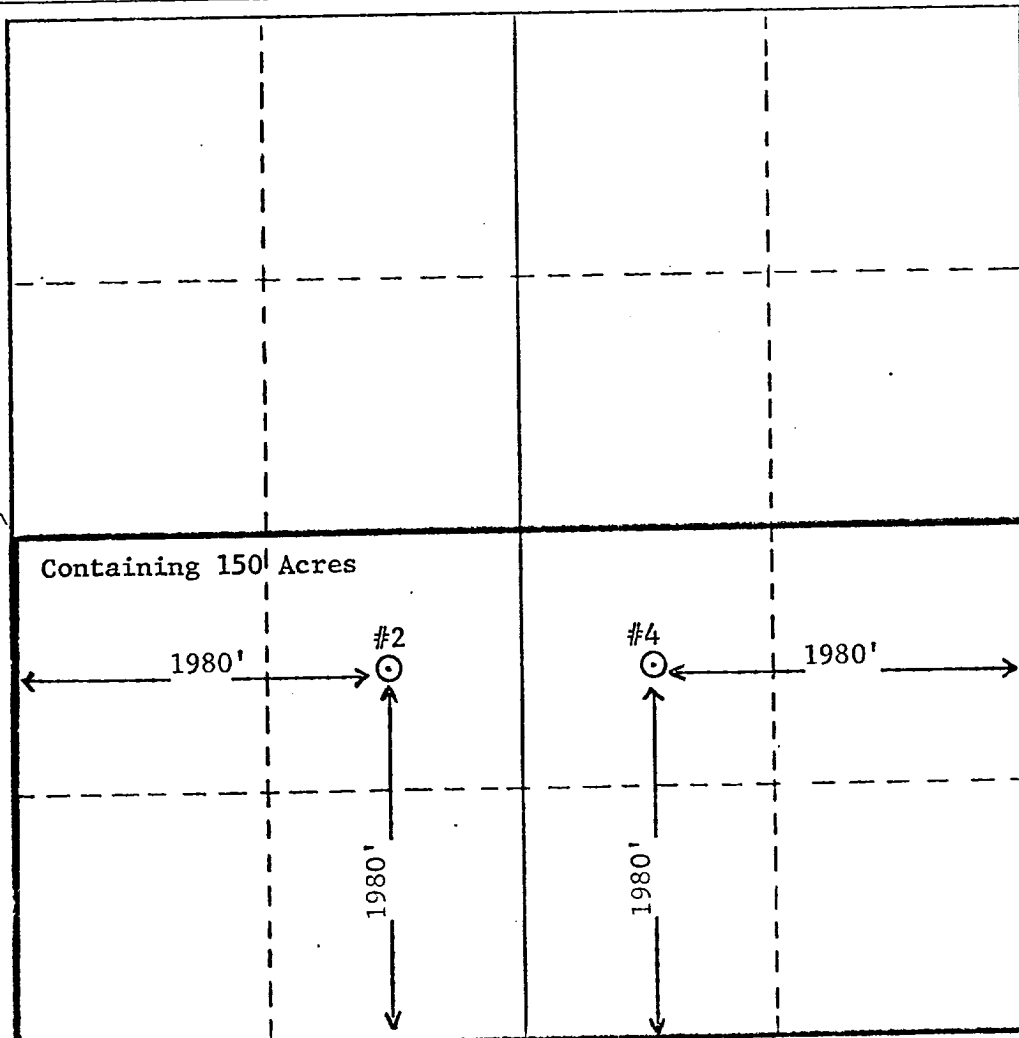
1. Outline the acreage dedicated to the subject well by colored pencil or hachure marks on the plat below.
2. If more than one lease is dedicated to the well, outline each and identify the ownership thereof (both as to working interest and royalty).
3. If more than one lease of different ownership is dedicated to the well, have the interests of all owners been consolidated by communitization, unitization, force-pooling, etc?

☒ Yes ☐ No If answer is "yes," type of consolidation Communitization

If answer is "no," list the owners and tract descriptions which have actually been consolidated. (Use reverse side of this form if necessary.) _____

No allowable will be assigned to the well until all interests have been consolidated (by communitization, unitization, forced-pooling, or otherwise) or until a non-standard unit, eliminating such interests, has been approved by the Commission.

NSP-157



CERTIFICATION

I hereby certify that the information contained herein is true and complete to the best of my knowledge and belief.

N. P. Sikes, Jr.

Name

N. P. SIKES, JR.

Position

Area Engineer

Company

GULF OIL CORPORATION

Date

08-22-78

I hereby certify that the well location shown on this plat was plotted from field notes of actual surveys made by me or under my supervision, and that the same is true and correct to the best of my knowledge and belief.

Date Surveyed

Registered Professional Engineer
and/or Land Surveyor

Certificate No.