

NEW MEXICO OIL CONSERVATION COMMISSION
WELL LOCATION AND ACREAGE DEDICATION PLAT

Form C-102
Supersedes
Effective 1-

All distances must be from the outer boundaries of the Section.

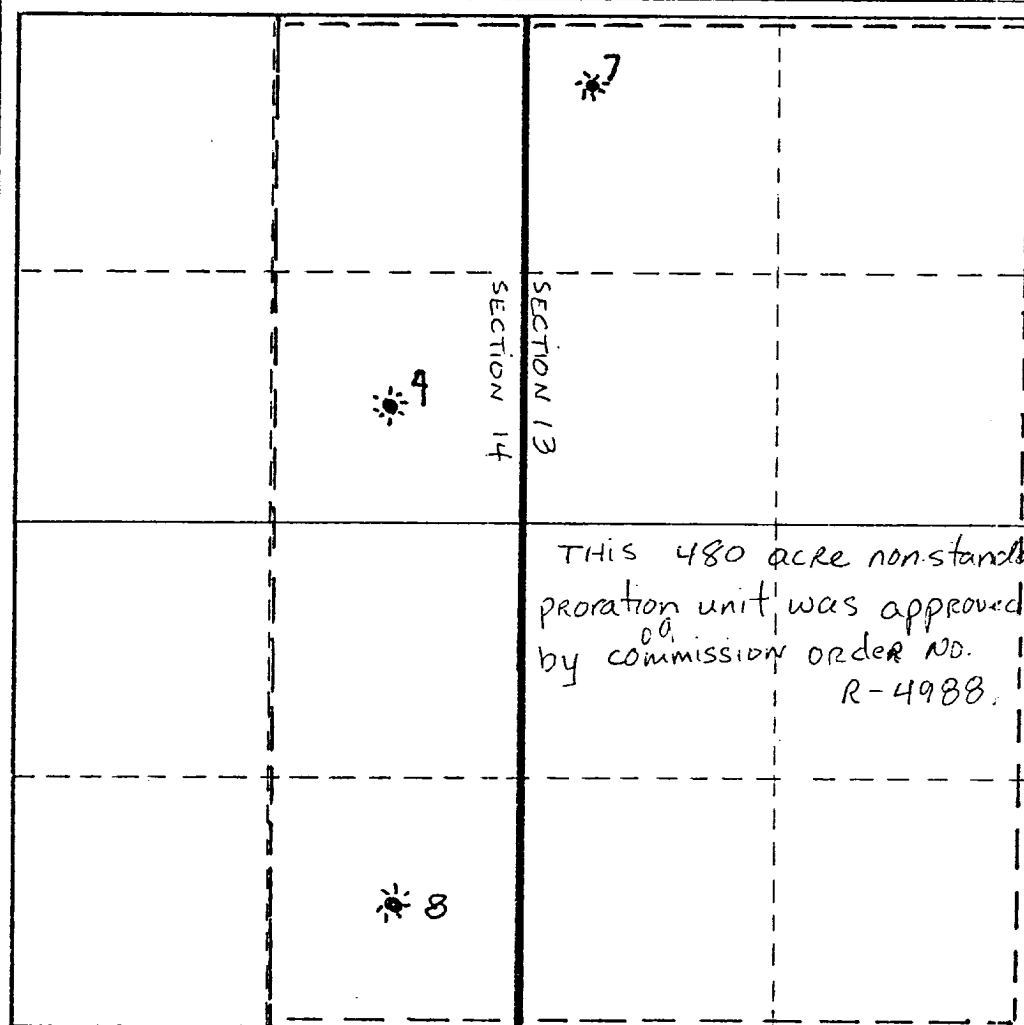
Operator CONTINENTAL OIL			Lease LOCKHART B		Well No. 7
Unit Letter D	Section 13	Township 21 S	Range 36 E	County Lea	
Actual Footage Location of Well: 330 feet from the NORTH line and 330 feet from the WEST line					
Ground Level Elev. 3575 GL	Producing Formation EUMONT (Queen)		Pool EUMONT Queen GAS		Dedicated Acreage: 480 Acres

1. Outline the acreage dedicated to the subject well by colored pencil or hachure marks on the plat below.
2. If more than one lease is dedicated to the well, outline each and identify the ownership thereof (both as to working interest and royalty).
3. If more than one lease of different ownership is dedicated to the well, have the interests of all owners been consolidated by communitization, unitization, force-pooling, etc?

☐ Yes ☐ No If answer is "yes," type of consolidation _____

If answer is "no," list the owners and tract descriptions which have actually been consolidated. (Use reverse side of this form if necessary.) _____

No allowable will be assigned to the well until all interests have been consolidated (by communitization, unitization, forced-pooling, or otherwise) or until a non-standard unit, eliminating such interests, has been approved by the Commission.



CERTIFICATION

I hereby certify that the information contained herein is true and complete to the best of my knowledge and belief.

Name
Stephen A. Johnson
Position
Assoc staff assistant
Company
CONTINENTAL OIL
Date
MARCH 27, 1975

I hereby certify that the well location shown on this plat was plotted from field notes of actual surveys made by me or under my supervision, and that the same is true and correct to the best of my knowledge and belief.

Date Surveyed

Registered Professional Engineer
and/or Land Surveyor

Certificate No.

**NEW MEXICO OIL CONSERVATION COMMISSION
WELL LOCATION AND ACREAGE DEDICATION PLAT**

Form C-102
Supersedes C-128
Effective 1-1-61

All distances must be from the outer boundaries of the Section.

R-3490

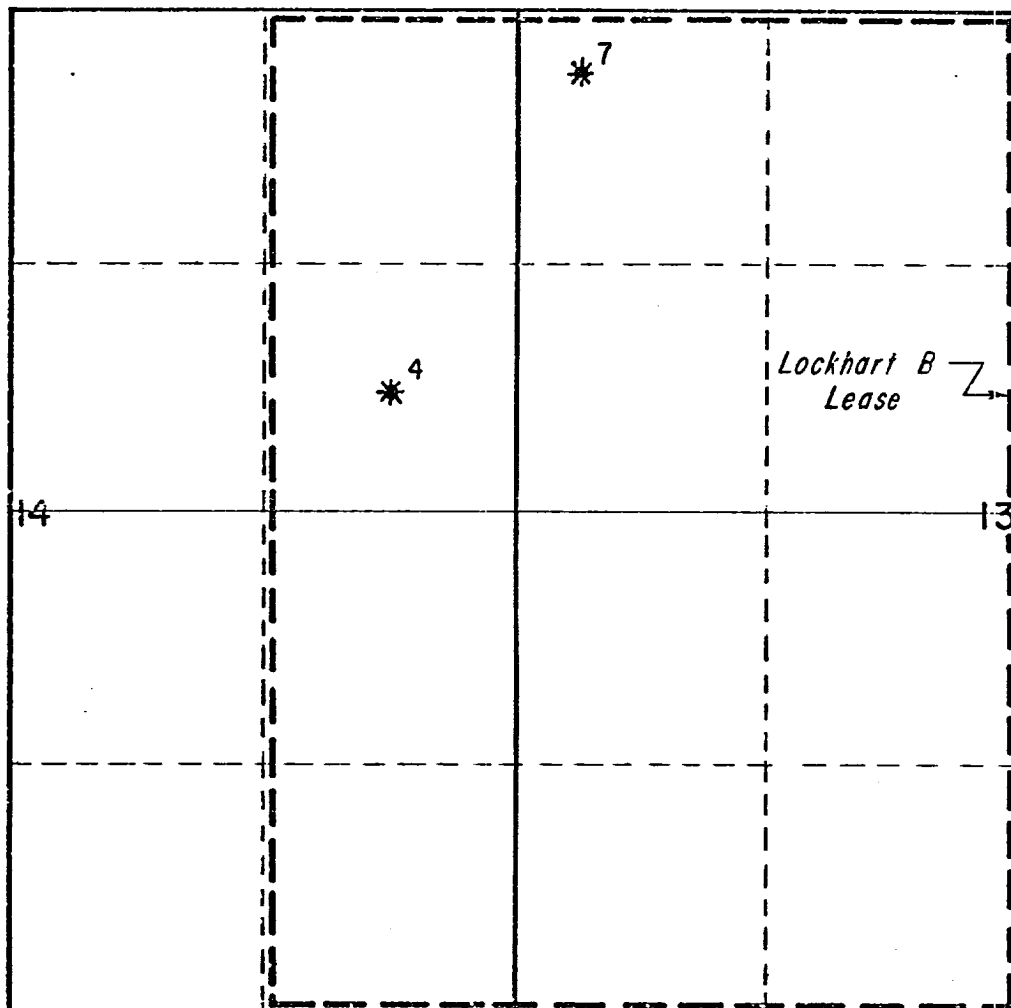
Operator Continental Oil Company			Lease Lockhart B		Well No. 7
Unit Letter D	Section 13	Township 21	Range 36	County Lea	
Actual Footage Location of Well: 330 feet from the North line and 330 feet from the West line					
Ground Level Elev. 3575	Producing Formation Eumont Queen		Pool Eumont Queen Gas Pool		Dedicated Acreage: 480 Acres

1. Outline the acreage dedicated to the subject well by colored pencil or hatchure marks on the plat below.
2. If more than one lease is dedicated to the well, outline each and identify the ownership thereof (both as to working interest and royalty).
3. If more than one lease of different ownership is dedicated to the well, have the interests of all owners been consolidated by communitization, unitization, force-pooling, etc?

☐ Yes ☐ No If answer is "yes," type of consolidation _____

If answer is "no," list the owners and tract descriptions which have actually been consolidated. (Use reverse side of this form if necessary.) _____

No allowable will be assigned to the well until all interests have been consolidated (by communitization, unitization, forced-pooling, or otherwise) or until a non-standard unit, eliminating such interests, has been approved by the Commission.



CERTIFICATION

I hereby certify that the information contained herein is true and complete to the best of my knowledge and belief.

Robert Gaulton

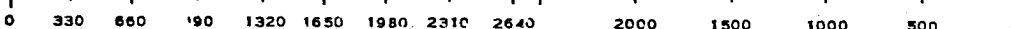
Name
Adm. Section Chief
Position
Continental Oil Co.
Company
9-20-68
Date

I hereby certify that the well location shown on this plat was plotted from field notes of actual surveys made by me or under my supervision, and that the same is true and correct to the best of my knowledge and belief.

Date Surveyed

Registered Professional Engineer
and/or Land Surveyor

Certificate No.



MN 04625
STATE NM OWWO

COUNTY LEA FIELD Eumont
OPR CONTINENTAL OIL CO. MAP
7 Lockhart B
Sec. 13, T-21-S, R-36-E CO-ORD
330' FNL, 330' FWL of Sec.

		CLASS		EL	
Re-Cmp 7-25-68		FORMATION	DATUM	FORMATION	DATUM
CSG & SX - TUBING					
10 3/4"	263'	225			
7 5/8"	1370'	425			
5 1/2"	3720'	425			
LOGS EL GR RA IND HC A					
		TD 3885', PBD 3705'			

IP Queen Perfs 3433-3679' Flwd 1577 MCFGPD. Pot. Based on 1 hr test thru 1-1/4" chk., TP 422#, CP 497#, GOR Dry.

Distribution limited and publication prohibited by subscribers' agreement.
Reproduction rights reserved by Williams & Lee Scouting Service, Inc.

CONT. PROP DEPTH 3710' TYPE WO
DATE

F.R.C. 10-24-68; OWWO
PD 3710' - Queen
(Orig. #1 Lockhart 3-13, Cmp 11-9-38 from
OH 3720-3885', OTD 3885')
10-21-68 TD 3885', PBD 3705', COMPLETE
11-4-68 AMEND FOOTAGE: Formerly reported as 330' FNL,
330' FEL of Sec.

MN 04625

STATE NM OWWO

COUNTY LEA FIELD Eumont

OPR CONTINENTAL OIL CO.

MAP

7 Lockhart B

Sec. 13, T-21-S, R-36-E

CO-ORD

330' FNL, 330' FEL of Sec.

CLASS

EL

Re-Cmp 7-25-68

FORMATION

DATUM

FORMATION

DATUM

CSG & SX - TUBING

10 3/4" 263' 225

7 5/8" 1370' 425

5 1/2" 3720' 425

LOSS EL GR RA IND HC A

TD 3885', PBD 3705'

TP Queen Perfs 3433-3679' Flwd 1577 MCFGPD. Pot. Based on 1 hr
 test thru 1-1/4" chk., TP 422#, CP 497#, GOR Dry.

Distribution limited and publication prohibited by subscribers' agreement.
 Reproduction rights reserved by Williams & Lee Scouting Service, Inc.

PROP DEPTH 3710'

TYPE WQ

10-21-68

F.R.C. 10-24-68; OWWO

PD 3710' - Queen

(Orig. #1 Lockhart B-13, Cmp 11-9-38 from

OH 3720-3885', OTD 3885')

TD 3885', PBD 3705', COMPLETE

PB to 3705'

Perf @ 3433', 3446', 3479', 3491', 3533',

3554', 3571', 3582', 3594', 3605', 3616',

3625', 3640', 3654', 3672', 3679' W/l SPI

Acid (3433-3679') 1600 gals.

Frac (3433-3679') 34,000 gals gelled brine

+ 34,000# sd.