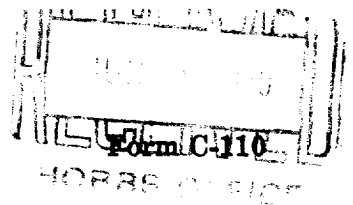


DUPLICATE

OIL CONSERVATION COMMISSION
STATE OF NEW MEXICO



CERTIFICATE of COMPLIANCE and AUTHORIZATION to TRANSPORT OIL

Company or Operator Sinclair Oil & Gas Co. Lease STATE #176
Address Box 1427 Hobbs, N.M. Box 521 Tulsa, Okla.
(Local or Field Office) (Principal Place of Business)
Unit 0 Wells No. 2 Sec. 19 T 21 R 36 Field Eunice County Lea
Kind of Lease Fee Location of Tanks On lease
Transporter TEXAS-NEW MEXICO PIPE LINE CO. Address of Transporter Midland, Texas
(Local or Field Office)
Percent of oil to be transported 100 Other transporters author-
(Principal Place of Business) ized to transport oil from this unit are None %
REMARKS:

Change of Operator from Repolle Oil Co. to Sinclair Oil & Gas Co.

The undersigned certifies that the rules and regulations of the Oil Conservation Commission have been complied with except as noted above and that gathering agent is authorized to transport the percentages of oil produced from the above described property and that this authorization will be valid until further notice to the transporter named herein or until cancelled by the Oil Conservation Commission of New Mexico.

Executed this the 1st day of June, 1949

Sinclair Oil & Gas Co.

(Company or Operator)

By [Signature]

Title Dist. Supt.

State of New Mexico

County of Lea

ss.

W. B. Rhees

Before me, the undersigned authority, on this day personally appeared W. B. Rhees known to me to be the person whose name is subscribed to the above instrument, who being by me duly sworn on oath states that he is authorized to make this report and has knowledge of the facts stated herein and that said report is true and correct.

Subscribed and sworn to before me, this the 1st day of June, 1949

Notary Public in and for Lea County, New Mexico

Approved: June - 2 - 1949

OIL CONSERVATION COMMISSION

By [Signature]

(See Instructions on Reverse Side)

INSTRUCTIONS

This form shall be executed and filed in quadruplicate with the Oil Conservation Commission at Santa Fe, New Mexico, covering each unit from which oil is produced. A separate certificate shall be filed for each transporter authorized to transport oil from a unit. After said certificate has been approved by the Oil Conservation Commission, one copy shall be forwarded to the transporter, one copy returned to the producer, and two copies retained by the Oil Conservation Commission.

A new certificate shall be filed to cover each change in operating ownership and each change in the transporter, except that in the case of a temporary change in the transporter involving less than the allowable production for one month the operator shall in lieu of filing a new certificate, notify the Oil Conservation Commission at Santa Fe, New Mexico, and the transporter, authorized by certificate on file with the Commission, by letter of the estimated amount of oil to be moved by the transporter temporarily moving oil from the unit and the name of such temporary transporter and a copy of such notice shall also be furnished such temporary transporter. Such temporary transporter shall not move any more oil than the estimated amount shown in said notice.

This certificate when properly executed and approved by the Oil Conservation Commission shall constitute a permit for pipe line connection and authorization to transport oil from the property named therein and shall remain in full force and effect until

- (a) Operating ownership changes
- (b) The transporter is changed or
- (c) The permit is cancelled by the Commission.

If any of the rules and regulations of the Oil Conservation Commission have not been complied with at the same time this report is filed, explain fully under the heading "REMARKS."

In all cases where this certificate is filed to cover a change in operating ownership or a change in the transporter designated to move oil, show under "REMARKS" the previous owner or operator and the transporter previously authorized to transport oil.

A separate report shall be filed to cover each producing unit as designated by the Oil Conservation Commission.

[Handwritten signature]

**OIL CONSERVATION COMMISSION
STATE OF NEW MEXICO**

Certificate of Compliance and Authorization to Transport Oil

Company or Operator Repollo Oil Company Lease State #176
 Address Box #1427, Hobbs, New Mexico Box #521, Tulsa, Okla.
 (Local or Field Office) (Principal Place of Business)
 Unit 0 Wells No. 2 Sec. 19 T 21 SR 36 E Field Emice County Lea
 Kind of Lease State Location of Tanks Sec. 19-21-36 on lease
 Transporter Shell Pipe Line Co. Address of Transporter Hobbs, New Mexico
 (Local or Field Office)
Houston, Texas. Percent of oil to be transported 100% Other transporters author-
 (Principal Place of Business) ized to transport oil from this unit are None %

REMARKS:

Texas New Mexico Pipe Line Company connected prior to January 23, 1943

The undersigned certifies that the rules and regulations of the Oil Conservation Commission have been complied with except as noted above and that gathering agent is authorized to transport the percentage of oil produced from the above described property and that this authorization will be valid until further notice to the transporter named herein or until cancelled by the Oil Conservation Commission of New Mexico.

Executed this the 26th day of January, 1943.

Repollo Oil Company
(Company or Operator)

By T. L. Speed
Title Dist. Mgr.

State of New Mexico
County of Lea } ss.

Before me, the undersigned authority, on this day personally appeared T. L. Speed known to me to be the person whose name is subscribed to the above instrument, who being by me duly sworn on oath states that he is authorized to make this report and has knowledge of the facts stated herein and that said report is true and correct.

Subscribed and sworn to before me, this the 26th day of January, 1943.

Notary Public in and for Lea County, New Mexico

Approved: 2-8- 1943

OIL CONSERVATION COMMISSION

By Carl B. Livingston

(See Instructions on Reverse Side)

INSTRUCTIONS

This form shall be executed and filed in quadruplicate with the Oil Conservation Commission at Santa Fe, New Mexico, covering each unit from which oil is produced. A separate certificate shall be filed for each transporter authorized to transport oil from a unit. After said certificate has been approved by the Oil Conservation Commission, one copy shall be forwarded to the transporter, one copy returned to the producer, and two copies retained by the Oil Conservation Commission.

A new certificate shall be filed to cover each change in operating ownership and each change in the transporter, except that in the case of a temporary change in the transporter involving less than the allowable production for one month the operator shall, in lieu of filing a new certificate, notify the Oil Conservation Commission at Santa Fe, New Mexico, and the transporter authorized by certificate on file with the Commission, by letter of the estimated amount of oil to be moved by the transporter temporarily moving oil from the unit and the name of such temporary transporter and a copy of such notice shall also be furnished such temporary transporter. Such temporary transporter shall not move any more oil than the estimated amount shown in said notice.

This certificate when properly executed and approved by the Oil Conservation Commission shall constitute a permit for pipe line connection and authorization to transport oil from the property named therein and shall remain in full force and effect until

- (a) Operating ownership changes
- (b) The transporter is changed or
- (c) The permit is cancelled by the Commission

If any of the rules and regulations of the Oil Conservation Commission have not been complied with at the time this report is filed, explain fully under the heading "REMARKS."

In all cases where this certificate is filed to cover a change in operating ownership or a change in the transporter designated to move oil, show under "REMARKS" the previous owner or operator and the transporter previously authorized to transport oil.

A separate report shall be filed to cover each producing unit as designated by the Oil Conservation Commission.