

+Submit 3 Copies
to Appropriate
District Office

State of New Mexico
Energy, Minerals and Natural Resources Department

Form C 103
Revised 1-1-89

DISTRICT I
P.O. Box 1980, Hobbs, NM 88240

OIL CONSERVATION DIVISION

P.O. Box 2088
Santa Fe, New Mexico 87504-2088

P.O. Drawer DD, Artesia, NM 88210

DISTRICT T11
1000 Rio Brazos Rd., Aztec, NM 87410

WELL API NO. 30-025-04721
5. Indicate Type of Lease STATE <input checked="" type="checkbox"/> FEE <input type="checkbox"/>
6. State Oil & Gas Lease No. B-1533 1/2
7. Lease Name or Unit Agreement Name State C-20
8. Well No. 4
9. Pool name or Wildcat Eumont Yates 7 Rivers Queen

SUNDRY NOTICES AND REPORTS ON WELLS (DO NOT USE THIS FORM FOR PROPOSALS TO DRILL OR TO DEEPEN OR PLUG BACK TO A DIFFERENT RESERVOIR. USE APPLICATION FOR PERMIT (FORM C-101) FOR SUCH PROPOSALS.)	
1. Type of Well: Oil Well <input checked="" type="checkbox"/> Gas Well <input type="checkbox"/> OTHER	
2. Name of Operator Conoco Inc.	
3. Address of Operator 10 Desta Dr. Ste 100W, Midland, Tx 79705-4500	
4. Well Location Unit Letter <u>N</u> <u>660</u> Feet From The <u>South</u> Line and <u>1980</u> Feet From The <u>West</u> Line Section <u>20</u> Township <u>21S</u> Range <u>36E</u> NMPM <u>Lea</u> County	
10. Elevaoun (Show whether DF, RKB, RT, GR, etc.)	

11.

Check Appropriate Box to Indicate Nature of Notice, Report, or Other Data

NOTICE OF INTENTION TO:

PERFORM REMEDIAL WORK ☐ PLUG AND ABANDON ☒
TEMPORARILY ABANDON ☐ CHANGE PLANS ☐
PULL OR ALTER CASING ☐
OTHER: ☐

SUBSEQUENT REPORT OF:

REMEDIAL WORK ☐ ALTERING CASING ☐
COMMENCE DRILLING OPNS. ☐ PLUG AND ABANDONMENT ☐
CASING TEST AND CEMENT JOB ☐
OTHER ☐

12. Describe Proposed or Completed Operations (Clearly state all pertinent details, and give pertinent dates, including estimated date of starting any proposed work)SEE RULE 1103.

Conoco now proposes to P&A the subject well, per the attached procedure. Verbal approval was given to Jim Newman with Triple N Services on 12/18/01.

THE COMMISSION MUST BE NOTIFIED 24 HOURS PRIOR TO THE BEGINNING OF PLUGGING OPERATIONS FOR THE C-103 TO BE APPROVED.

12. I hereby certify that the information above is true and complete to the best of my knowledge and belief.

SIGNATURE Reesa Wilkes TITLE Regulatory Specialist DATE 12/18/01
TYPE OR PRINT NAME Reesa R. Wilkes TELEPHONE NO. 915/686-5580

(this space for State Use)

APPROVED BY _____ TITLE _____ DATE _____

CONITIONS OF APPROVAL, IF ANY:

Distribution: OCD (3), SHEAR, PONCA, COST ASST, FIELD, WELL FILE

Verbal plugging procedure 12/18/01 per Gary Wink w/ Hobbs OCD

**Conoco Inc.
State C-20 #4**

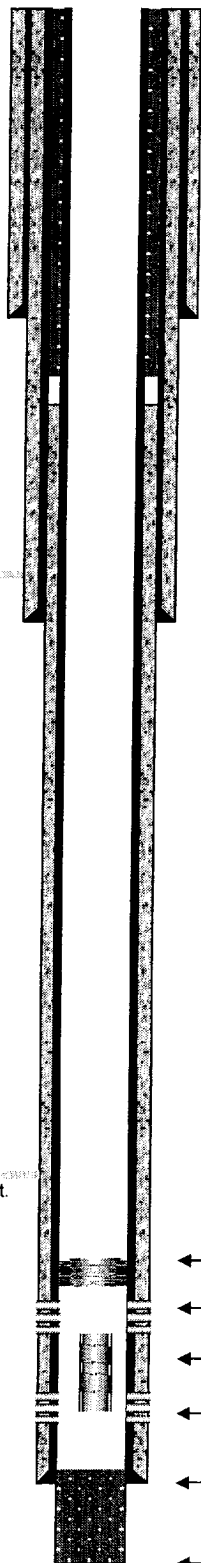
Surface casing: 10-3/4" @ 130' cmt'd w/ 75 sx, circulated
Intermediate csg: 7-5/8" @ 1,660' cmt'd w/ 400 sx, circulated (calculated)
Production casing: 5 1/2" 17# csg @ 3,867' cmt'd w/ 275 sx, TOC 275' (calculated)
5 1/2" 17# = 7.661 ft/ft³

Open Perforations: Upper Eumont 3,103 – 3,398'
Lower Eumont 3,436 – 3,741'

Current Operations: Holes in casing 171 – 325' isolated and squeezed in 1991, circulated to surface, tested. In December, 2001, left 216' 2-7/8" tubing in hole due to sand/scale, chemical cut, top of fish @ 3,403'. Isolated holes in casing 126 – 253' isolated. Casing tested to 500 psi 253 - 3,050' and 126' to surface.

During P&A operations, SI casings nightly, installing gauges. Check & record all pressures on morning report.

1. Pull RBP set 12/17/01 @ 3,050'. RIH w/ tubing-set CIBP to 3,050'.
2. RU cementer, set CIBP @ 3,050', and load hole w/ 50 bbls 9.5 ppg plugging mud. Pump 30 sx C cement 3,050 – 2,800'. WOC and tag this plug per NMOCD no deeper than 2,850'. ***Eumont perforations and base of salt section @ 2,900'***
3. POOH w/ tbg to 1,710'. Load hole w/ mud and pump 35 sx C cmt 1,710 – 1,360'. WOC and tag this plug per NMOCD no deeper than 1,450'. ***Intermediate casing shoe and top of salt @ 1,500'***
4. POOH w/ tbg to 250'. Pump 25 sx C cement w/ 2% CaCl₂ 250' to surface. POOH w/ tbg and WOC/tag this plug no deeper than 80', if tagged below 80', pump additional cement and tag as needed to ensure 100' cmt plug across surface casing shoe. ***surface casing shoe @ 130'***
5. Pump 10 sx C cmt 50' to surface.
6. Cut off wellhead and install dry hole marker. Cut off anchors and close working pit.



← 10-3/4" to 130'
isolated holes in casing
126 - 253', 2 BPM @ 0 psi

top of salt est.
@ 1,500'

← 7-5/8" to 1,660'

base of salt est.
@ 2,900'

← RBP @ 3,050' set on
12/17/01
← Upper Eumont
3,103' - 3,398'
← top of fish @ 3,403'
← Lower Eumont
3,436' - 3,741'
← 5-1/2" to 3,867'
← TD 3,965'

Field Name: Eumont Yates 7 Rivers Queen

County: Lea

Well Type:

gas

State: New Mexico

Depth:

3,965

RRC District:

Drilling Commenced:

Section: 20

Drilling Completed:

5/21/1935

Block:

Date Well Plugged:

Survey: T-21-S; R-36-E

Longitude:

660 FSL & 1,980 FWL

Latitude:

Unit Letter N

Freshwater Depths:

API #: 30-025-08936

Elevation:

3,657

Lease or ID: B 1533 1/2

Casing

Description	Size (inches)	Depth (feet)	TOC (feet)	Cement (sacks)	Hole Size (inches)
Surface:	10-3/4"	130	Surface	75	15
Intermediate:	7-5/8"	1,660	Surface	400	9-7/8
Production:	5-1/2"	3,867	275	300	6-3/4
cement tops calculated					

Existing Plugs

Description	Top (feet)	Depth (feet)	Volume (sacks)	Volume (cu ft)
1 Cement	3,550	3,856		
2 loc-set w/ bull plug	3,050	3,050		

Perforations

Formation	Top (feet)	Depth (feet)
Upper Eumont	3,103	3,398
Lower Eumont	3,436	3,741

Formations

Name	Top of Formation
Estimated top of salt	1,500
Estimated base of salt	2,900

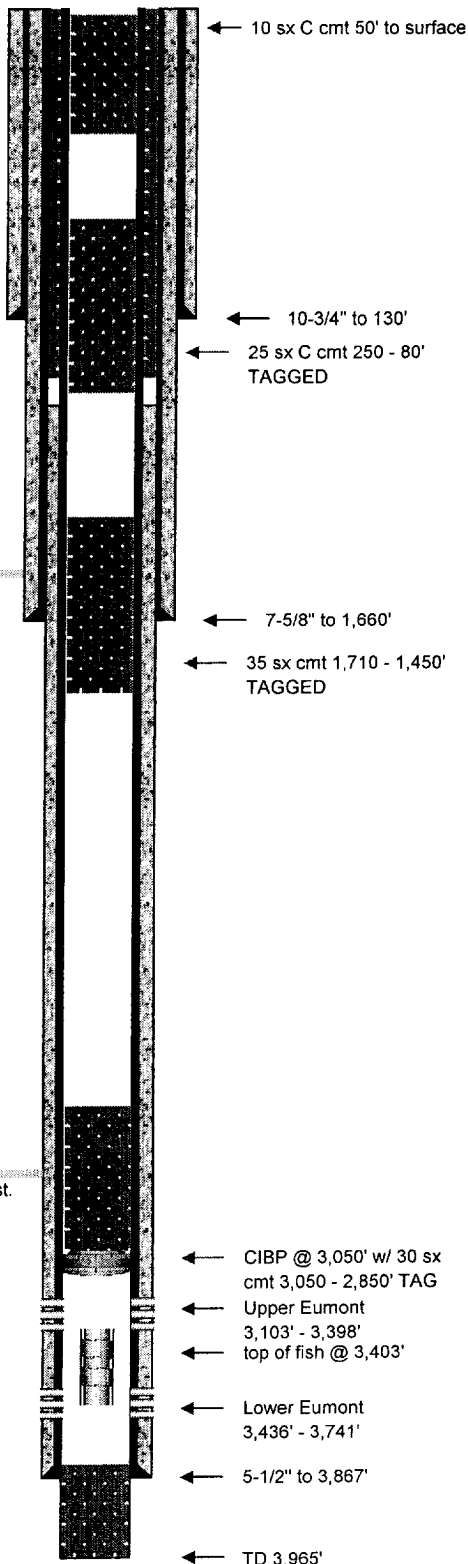
Comments

1991: sqz'd holes in casing 171 - 325' w/ 60 sx, circulated to surface and tested. Plugged back to Eumont in 1997. 2-7/8" tubing w/ seating nipple @ 3,619'. Unable to pull tubing December, 2001 during TA, chemical cut tubing @ 3,403' and set Loc-Set packer @ 3,050' w/ bull plug (Hudson Packers, Hobbs, Gady Johnson)

TRIPLE N
SERVICES INC.
MIDLAND, TX

Prepared By: Jim Newman

Date: 12/17/2001



Field Name:	Eumont Yates 7 Rivers Queen		
County:	Lea	Well Type:	gas
State:	New Mexico	Depth:	3,965
RRC District:		Drilling Commenced:	
Section:	20	Drilling Completed:	5/21/1935
Block:		Date Well Plugged:	
Survey:	T-21-S; R-36-E	Longitude:	
660 FSL & 1,980 FWL		Latitude:	
Unit Letter N		Freshwater Depths:	
API #:	30-025-08936	Elevation:	3,657
Lease or ID:	B 1533 1/2		

Casing

Description	Size (inches)	Depth (feet)	TOC (feet)	Cement (sacks)	Hole Size (inches)
Surface:	10-3/4"	130	Surface	75	15
Intermediate:	7-5/8"	1,660	Surface	400	9-7/8
Production:	5-1/2"	3,867	275	300	6-3/4
cement tops calculated					

Proposed Plugs

Description	Top (feet)	Depth (feet)	Volume (sacks)	Volume (cu ft)
1 Cement (existing)	3,550	3,856		
2 CIBP	3,050	3,050		
3 class C cmt, balanced, tagged	2,850	3,050	35	46.2
4 class C cmt, balanced, tagged	1,450	1,710	35	46.2
5 class C cmt, balanced, tagged	80	250	25	33.0
6 class C cmt, balanced	surface	50	10	13.2

Perforations

Formation	Top (feet)	Depth (feet)
Upper Eumont	3,103	3,398
Lower Eumont	3,436	3,741

Formations

Name	Top of Formation
Estimated top of salt	1,500
Estimated base of salt	2,900

Comments

1991: sqz'd holes in casing 171 - 325' w/ 60 sx, circulated to surface and tested.
 Plugged back to Eumont in 1997. 2-7/8" tubing w/ seating nipple @ 3,619'. Unable to pull tubing December, 2001 during TA, chemical cut tubing @ 3,403'.

TRIPLE N
 SERVICES INC.
 MIDLAND, TX

Prepared By: Jim Newman
 Date: 12/18/2001