



PROPOSED P&A WELL DATA SHEET

LEASE: EMSU WELL: 439

LOC: 660' F N L & 1980' F W L SEC: 21

TOWNSHIP: 21S CNTY: Lea

RANGE: 36E UNIT: C ST: N.M.

(formerly: Arnett Ramsay NCT-C #6)

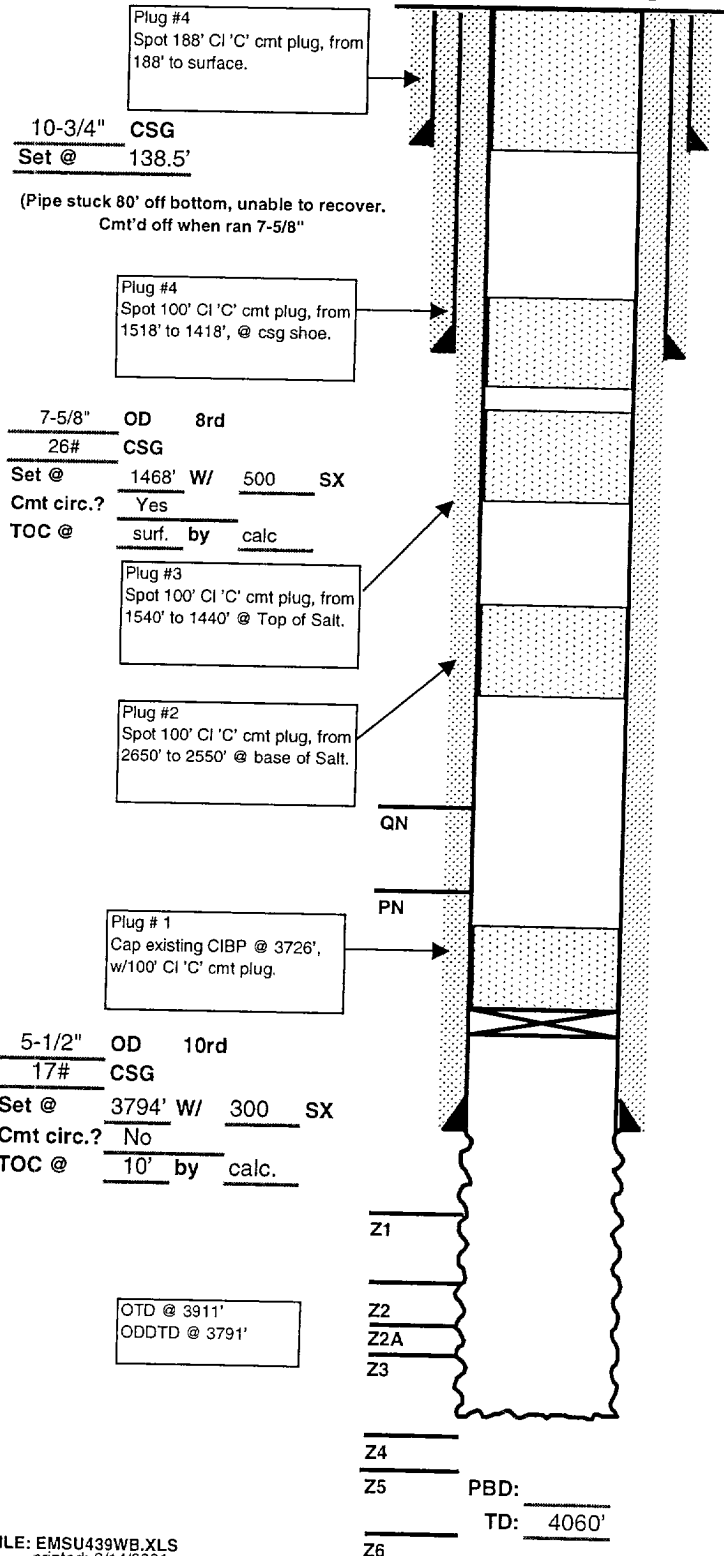
FORM: Grayburg / San Andres DATE:

GL: 3620' STATUS: SI Producer

KB: 3626' API NO: 30-025-04739

DF: CHEVNO: FA 5879

P&A PROPOSAL



Date Completed: 6/3/36

Initial Production: 245 BOPD

Initial Formation: Grayburg

FROM: 3765' to 3911'

Completion Data

2/22/36 Drill to 3570' & stuck pipe. Set whipstock @ 3119' & drill by. Lost cones in hole & set whipstock @ 2912'. Drill by to 3795'. RIH w/ 5-1/2" csg. Drill to 3911'. ACDZ w/ 1000 gals acid. Swb well in & F/ 123 BO + 500 MCFG in 12 hrs. TOTP.

Subsequent Workover or Reconditioning:

9/30/44 Well F/ 29 BOPD. ACDZ w/ 2000 gals 15% NEA. F/ 225 BOPD + 45 BWPD.

6/14/46 Well F/ 20 BOPD + 4 BWPD. ACDZ w/ 3000 gals 15% NeA. F/ 73 BOPD + 5 BWPD.

9/3/47 Install packer 3748-54'.

9/15/50 Pull & re-run tubing, replace flow valves.

1/27/53 Well prod. 14 BO + 3 BW for month of Dec. Install pumping equip. P/ 57 BOPD + 27.8 MCFGPD + 15 BWPD.

5/22/62 ACDZ w/ 1000 gals 15% FEA. Well sub-economic. TA well.

3/13/85 Deepen from 3917' by cable tool to 3931' (14'). Log SCHL CNL-CCL-GR (3932' - surf). ACDZ w/ 3500 gals 15% NeFe HCl. Swb rec'd 69 BW (trace OC) w/ prod. tbg. & set pump. Well P/ 7 BOPD + 14 BWPD.

10/12/86 Deepen from 3931' to 4060'. Log SCHL CNL-CCL-GR-CAL 4060' - 3000'. ACDZ w/ 4000 gals 15% NeFe HCl block w/ Naptha flakes. RIH w/ prod. tbg and set pump. P/ 8 BOPD + 21 MCFGPD + 69 BWPD.

6/92 Shut-in.

8/95 Reactivate.

5/15/01 Set CIBP @ 3726'. Circ w/Pkr Fluid, run MIT, press csg to 500#, lost 300# in 3 mins. Repressed several times w/same results, (csg leak). Well will be P&A'd.

Additional Data:

T/Salt @ 1490'

B/Salt @ 2600'

T/Queen @ 3574'

T/Penrose @ 3728'

T/Grayburg Zone 1 @ 3914'

T/Grayburg Zone 2 @ 3958'

T/Grayburg Zone 2A @ 4004'

T/Grayburg Zone 3 @ 4038'

T/Grayburg Zone 4 @ 4075'

T/Grayburg Zone 5 @ 4125'

T/Grayburg Zone 6 @ 4161'

T/San Andres @ 4163'

KB @ 3626'