

## P&A PROCEDURE

Well Name: Arnott Ramsay (NCT-C) #8  
API Number: 30-025-04741  
Coordinates: 660 FSL & 1980' FEL, Unit O  
S - T - R: 21 - 21S - 36E  
County / State: Lea, New Mexico  
Drilled: 1936

Operator: Chevron  
Field: Eumont  
Date: 8/2/01  
By: DCD

### Provide 24 hr Notification to NMOCD of Pending Operations

1. MI Benterra equip. Hold pre-job safety mtg and spot equipment. Check 51/2" csg, 75/8" x 51/2" and 103/4" x 75/8" annulus for pressure.
2. ND WH equip and install well control equip.
3. Check btm w/ SL. Record FL. Displace wellbore fluids w/ freshwater.
- 3(a) *set wiper @ 2890 zonite plug 2790-2890*
4. Insert 51/2" wiper plug (cored to allow fluid bypass) into csg and push to 1575' w/ slickline.
5. Surface pour 14 cu ft of ZONITE to set 100' plug from 1475 - 1575', across top of salt and 75/8" csg. Set plug in stages, check w/ SL to assure bridges are not occurring and required plug height is achieved. Pour at rate that minimizes potential to bridge. After setting plug, add water as necessary to assure hydration of plug.  
*set w*
6. Insert 51/2" wiper plug (cored to allow fluid bypass) into csg and push to 600' w/ slickline. Surface pour 42 cu ft ZONITE to establish plug from 226 - 600'. This covers 103/4" shoe @ 276' and extends plug to below top of cement outside of 51/2" at 550'.  
*cut + pull 5 1/2" @ 326'*
- 6(a) *set wiper plug @ 376 zonite 226-376*
7. Insert & push 51/2" wiper plug to 30' w/ SL. Fill csg w/ ZONITE to 3' from surface (4 cu ft). Add water as needed to hydrate plug.
8. Remove well control equip, secure WH and RD equip.
9. Allow 48 hours for ZONITE to hydrate, remove WH, cut off casings 3' below GL. Also attempt to bridge 75/8" x 51/2" annulus w/ ZONITE before capping wellbore.
10. Install dry hole marker stamped w/ required well identification, 4" OD x 4' above GL.
11. Remove all equip and cut deadmen below GL.
12. Turn over to Chevron for any surface remediation work.

Estimated ZONITE Requirements:

65 ft<sup>3</sup>

*tag all plugs*

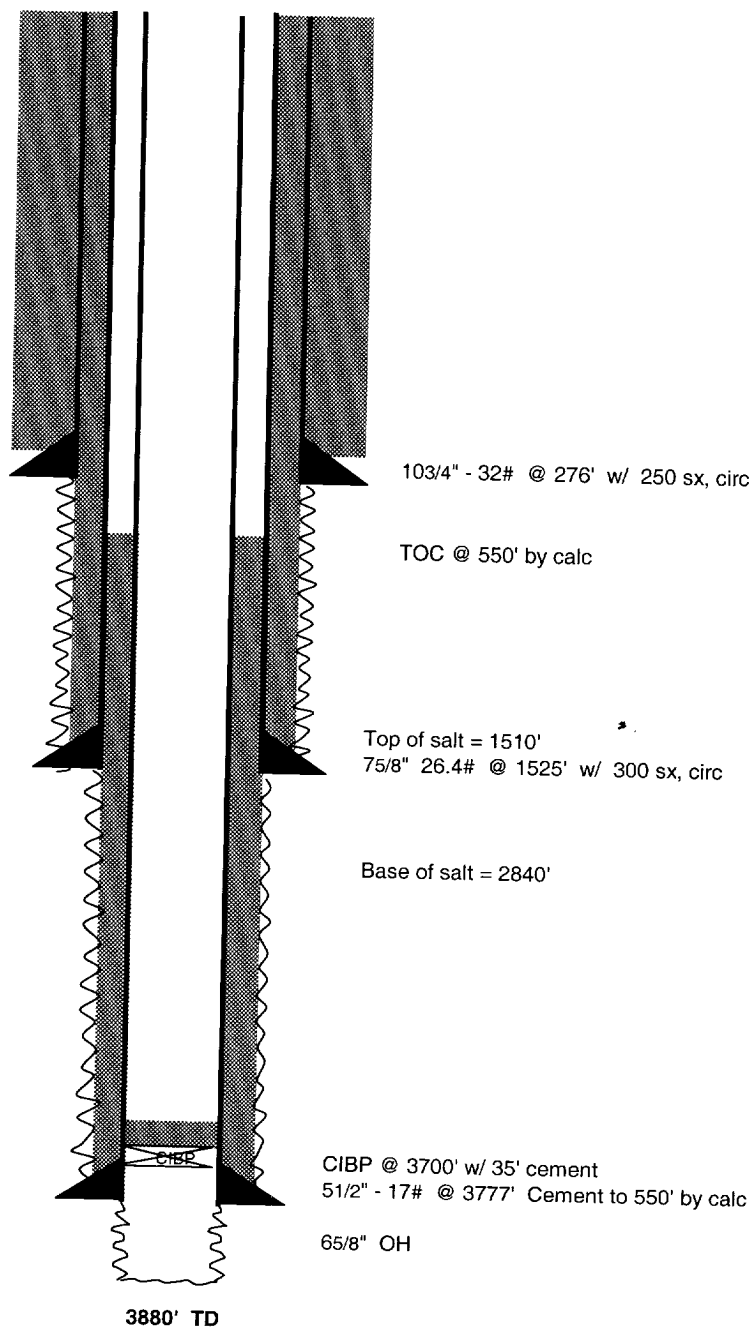
# WELL PLANNING SHEET EXISTING CONFIGURATION

Well Name: Arnett Ramsay (NCT-C) #8  
API Number: 30-025-04741  
Coordinates: 660 FSL & 1980' FEL, Unit O  
S - T - R: 21 - 21S - 36E  
County / State: Lea, NM  
Drilled: 1936

Operator: Chevron  
Field: Eumont (Queen)  
Date: 7/31/2001  
By: M. Bondy

RKB = 6.5'

Formation Tops	
Rustler	1420'
Salt	1510'
Base of Salt	2840'
Yates	3140'
7 Rivers	3280'
Queen	3605'



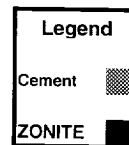
**WELL PLANNING SHEET**  
**Proposed P&A**

**Well Name:** Arnott Ramsay (NCT-C) #8  
**API Number:** 30-025-04741  
**Coordinates:** 660 FSL & 1980' FEL, Unit O  
**S - T - R** 21 - 21S - 36E  
**County / State:** Lea, NM  
**Drilled:** 1936

**Operator:** Chevron  
**Field:** Eumont (Queen)  
**Date:** 7/31/2001  
**By:** M. Bondy

**RKB =** 6.5'

Formation Tops	
Rustler	1420'
Salt	1510'
Base of Salt	2840'
Yates	3140'
7 Rivers	3280'
Queen	3605'



ZONITE Plugs	
3 - 30'	
226 - 600'	
1475 - 1575'	

