



# WELL DATA SHEET

**LEASE:** EMSU **WELL:** 443  
**LOC:** 1980' F N L & 1980' F E L **SEC:** 21  
**TOWNSHIP:** 21S **CNTY:** Lea  
**RANGE:** 36E **UNIT:** G **ST:** N.M.  
 (formerly: Arnott Ramsay (NCT-C) #10)

**FORM:** Grayburg / San Andres **DATE:** \_\_\_\_\_  
**GL:** 3609' **STATUS:** Producer  
**KB:** 3609' **API NO:** 30-025-04743  
**DF:** \_\_\_\_\_ **CHEVNO:** FA 5883:01

**Date Completed:** 8/18/1936  
**Initial Production:** 1440 BOPD  
**Initial Formation:** Grayburg  
**FROM:** 3810' to 3905' / GOR 0

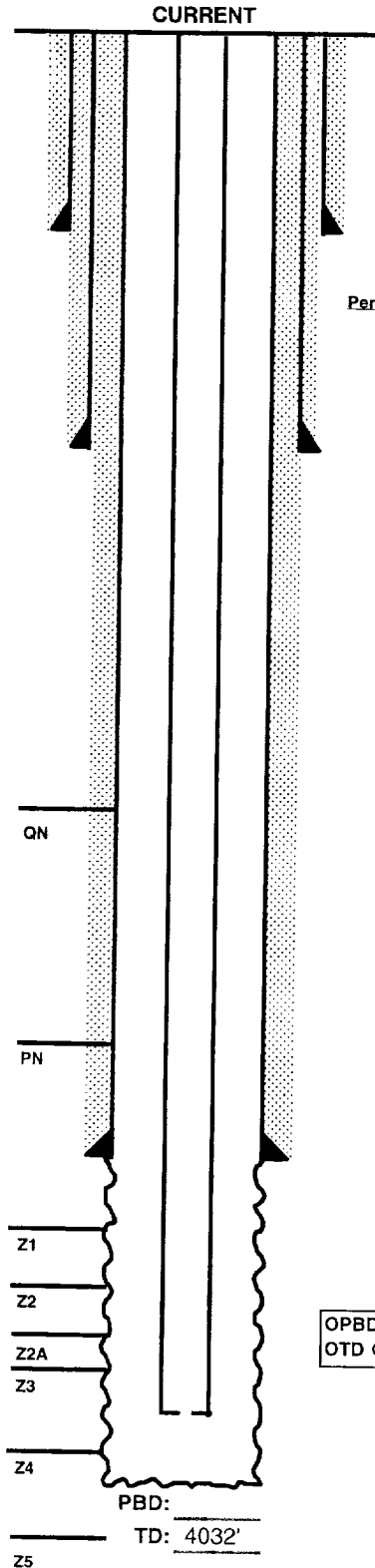
16" OD  
CSG  
**Set @** 29' W/ 75 SX  
**Cmt circ.?** Yes  
**TOC @** surf. by calc.

7-5/8" OD  
22# CSG 8rd  
**Set @** 1498' W/ 650 SX  
**Cmt circ.?** Yes  
**TOC @** surf. by circ.

| Tubing Detail: 7/87           |          |
|-------------------------------|----------|
| Original KBTH:                | 0.00'    |
| 126 Jts. 2-3/8" J-55 and H-40 |          |
| tbg:                          | 3969.64' |
| 2-3/8" Seating Nipple:        | 1.10'    |
| 2-3/8" Perf Sub:              | 4.10'    |
| 2-3/8" BPMA Jt.               | 31.81'   |
| Landed @:                     | 4006.65' |

| Rod Detail: 7/87                   |  |
|------------------------------------|--|
| 1-1/4" X 16' Polished Rod w/ liner |  |
| 2 - 6' X 3/4" Sub Rods             |  |
| 157 - 3/4" Sucker Rods             |  |
| 4' X 3/4" Sub Rod                  |  |
| 2" X 1-1/2" X 12' RWTC pump        |  |

5-1/2" OD  
17# CSG 10rd  
**Set @** 3795' W/ 275 SX  
**Cmt circ.?** Yes  
**TOC @** 318' by calc.



### Completion Data

**8/86** Drill to 3795', set 5-1/2" csg & drill to 3905'. F/ 480 BO & 1.725 MMCFG in 8 hours. Complete naturally.

### Subsequent Workover or Reconditioning:

**07/57** PB to 3851'. ACDZ w/ 3000 gals 15% NeA. D/O to 3895'. ACDZ w/ 3000 gals 15% NeA.  
**2/62** ACDZ w/ 1000 gals 15% NeA.  
**2/65** ACDZ w/ 750 gals 15% NeA.  
**1/72** ACDZ w/ 750 gals 15% NeA.  
**6/29/87** Deepen to 4032'. Log Welex CNL-CCL-GR-CAL (logger TD 4032'). Tool sticking below 4020' - logged 4020-3000'. RIH w/ prod tbg. Test pump 7 BOPD/ 107 MCFGPD/ 13 BWPD.  
**9/8/90** Selectively perf 3820-3863' w/ 2.5 SPF. Selectively ACDZ w/ 1000 gals 15% NeHCl. RIH w/ injection equipment & TOTP. Inj rate: 630 BWIPD @ ? psig.

### Additional Data:

T/Queen Formation @ 3574'  
 T/Penrose Formation @ 3710'  
 T/Grayburg Zone 1 @ 3868'  
 T/Grayburg Zone 2 @ 3907'  
 T/Grayburg Zone 2A @ 3944'  
 T/Grayburg Zone 3 @ 3977'  
 T/Grayburg Zone 4 @ 4021'  
 T/Grayburg Zone 5 @ 4081'  
 T/Grayburg Zone 6 @ 4120'  
 T/San Andres Formation @ 4135'  
 KB @ 3609'