

UNITED STATES  
DEPARTMENT OF THE INTERIOR  
BUREAU OF LAND MANAGEMENT

FORM APPROVED

N.M. Oil Cons  
P.O. Box 1980  
Hobbs, NM 88240  
Bureau No. 1004-0135  
Expires March 31, 1993  
Lease Designation and Serial No.  
NM 8824 NM 90162

SUNDRY NOTICES AND REPORTS ON WELLS

Do not use this form for proposals to drill or to deepen or reentry to a different reservoir  
Use "APPLICATION FOR PERMIT-" for such proposals

SUBMIT IN TRIPLICATE

1 Type of Well:

☒ Oil Well ☐ Gas Well ☐ INJECTION  
☐ Other

2 Name of Operator

CONOCO INC

3 Address and Telephone No

10 DESTA DR STE 100W, MIDLAND, TX 79705 (915) 686-5424 915 684-6381

4 Location of Well (Footage Sec T R M, or Survey Description)

Surface 1980 FNL & 660 FWL  
Location Section 28, T21S, R36E, Unit Ltr E  
TD Same

6 If Indian Allottee or Tribe Name

7 If Unit or CA Agreement Designation

8 V  
Lockhart B 28  
Well #2

9 API Well No

30 025 04810

10 Field and Pool or Exploratory Area

Eumont Yates 7 Rvrs Queen

11 County or Parish State

Lea County, NM

12 CHECK APPROPRIATE BOX(s) TO INDICATE NATURE OF NOTICE, REPORT, OR OTHER DATA

TYPE OF SUBMISSION

☐ Notice of Intent  
☒ Subsequent Report  
☐ Final Abandonment Notice

TYPE OF ACTION

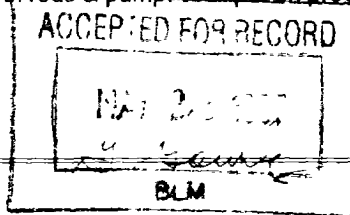
☐ Abandonment  
☐ Recompletion  
☐ Plugging Back  
☐ Casing Repair  
☐ Altering Casing  
☒ Other Retrieve fish

☐ Change of Plans  
☐ New Construction  
☐ Non-Routine Fracturing  
☐ Water Shut-Off  
☐ Conversion to Injection  
☐ Dispose Water

(Note Report results of multiple completion on Well  
Completion or Recompletion Report and Log form)

13 Describe Proposed or Completed Operations (Clearly state all pertinent details and give pertinent dates including estimated date of starting any proposed work. If well is directionally drilled, give subsurface locations and measured and true vertical depths for all markers and zones pertinent to this work.)

3-25-97: Rig up, pull out of hole, go in hole with shoe.  
3-26-97: Established circulation, tag @ 3737', clean out to 3784', fell through, go in hole to 3821'.  
Circulate clean SION.  
3-27-97: Latch on to fish, pull out laying down. SION.  
3-31-97: Tagfill @ 3883', pull out of hole, go in w/bailer, tag @ 3883', clean out to 3916'. Prep to run  
prod tubing & SN.  
4-1-97: Land tubing with seating nipple @ 3856'. Go in hole with rods & pump. Well put on production.



RECEIVED  
MAY 21 P 9:37

14 I hereby certify that the foregoing is true and correct

Signed

Ann E. Ritchie  
Title REGULATORY AGENT

Date 5-22-97

(This space for Federal or State office use)

Approved by

Conditions of approval: if any

Title

Date

Title 18 U.S.C. Section 1001 makes it a crime for any person knowingly and willfully to make to any department or agency of the United States any false, fictitious or fraudulent statements or representations as to any matter within its jurisdiction

\*See Instruction on Reverse Side