

Submit 3 Copies to  
Appropriate Dist. Office

State of New Mexico  
Geology, Minerals and Natural Resources Department

Revised 1-1-89

INSTRUCTIONS ON REVERSE  
SIDE

DISTRICT I  
P.O. Box 1980, Hobbs, NM 88240

### OIL CONSERVATION DIVISION

P.O. Box 2088  
Santa Fe, New Mexico 87504-2088

This form is not to be used for  
reporting packer leakage tests in  
Northwest New Mexico

DISTRICT II  
P.O. Drawer DD, Artesia, NM 88210

## SOUTHEAST NEW MEXICO PACKER LEAKAGE TEST

Operator <u>CHEVRON USA, INC.</u>				Lease <u>ARNOTT RAMSEY NCT-D</u>		Well No. <u>3</u>	
Location of Well	Unit <u>F</u>	Sec. <u>33</u>	Twp <u>21 S</u>	Rge <u>36 E</u>	County <u>Lea</u>		
Name of Reservoir or Pool			Type of Prod. (Oil or Gas)	Method of Prod. Flow, Art Lift	Prod. Medium (Tbg. or Csg)	Choke Size	
Upper Compl	<u>EUMONT Y-7 RQ</u>		<u>GAS</u>	<u>Flow</u>	<u>Csg</u>	<u>-</u>	
Lower Compl	<u>EUMONT Y-7 RQ</u>		<u>OIL</u>	<u>STANDING</u>	<u>Tbg</u>	<u>-</u>	

### FLOW TEST NO. 1

Both zones shut-in at (hour, date): 10:30 AM 3/28/95

Well opened at (hour, date): 10:30 AM 3/29/95

Indicate by ( X ) the zone producing..... X

Pressure at beginning of test..... 102      83

Stabilized? (Yes or No)..... yes      yes

Maximum pressure during test..... 102      83

Minimum pressure during test..... 42      83

Pressure at conclusion of test..... 42      83

Pressure change during test (Maximum minus Minimum)..... 60      0

Was pressure change an increase or a decrease?..... DECREASE      -

Well closed at (hour, date): 10:30 AM 3/28/95      Total Time On Production 24 hrs

Oil Production \_\_\_\_\_ Gas Production \_\_\_\_\_

During Test: \_\_\_\_\_ bbls; Grav. \_\_\_\_\_      During Test \_\_\_\_\_ MCF; GOR \_\_\_\_\_

Remarks LOWER COMPLETION IS STANDING

### FLOW TEST NO. 2

Well opened at (hour, date): \_\_\_\_\_

Indicate by ( X ) the zone producing..... \_\_\_\_\_

Pressure at beginning of test..... \_\_\_\_\_

Stabilized? (Yes or No)..... \_\_\_\_\_

Maximum pressure during test..... \_\_\_\_\_

Minimum pressure during test..... \_\_\_\_\_

Pressure at conclusion of test..... \_\_\_\_\_

Pressure change during test (Maximum minus Minimum)..... \_\_\_\_\_

Was pressure change an increase or a decrease?..... \_\_\_\_\_

Well closed at (hour, date) \_\_\_\_\_ Total time on Production \_\_\_\_\_

Oil production \_\_\_\_\_ Gas Production \_\_\_\_\_

During Test: \_\_\_\_\_ bbls; Grav. \_\_\_\_\_ ; During Test \_\_\_\_\_ MCF; GOR \_\_\_\_\_

Remarks \_\_\_\_\_

### OPERATOR CERTIFICATE OF COMPLIANCE

I hereby certify that the information contained herein is true and completed to the best of my knowledge

Chevron Usa, inc.

Operator

Felix Trevino      3/29/95

Signature

Felix Trevino      Production Specialist

Printed Name

505-397-8745

Title

### OIL CONSERVATION DIVISION

Date Approved APR 05 1995

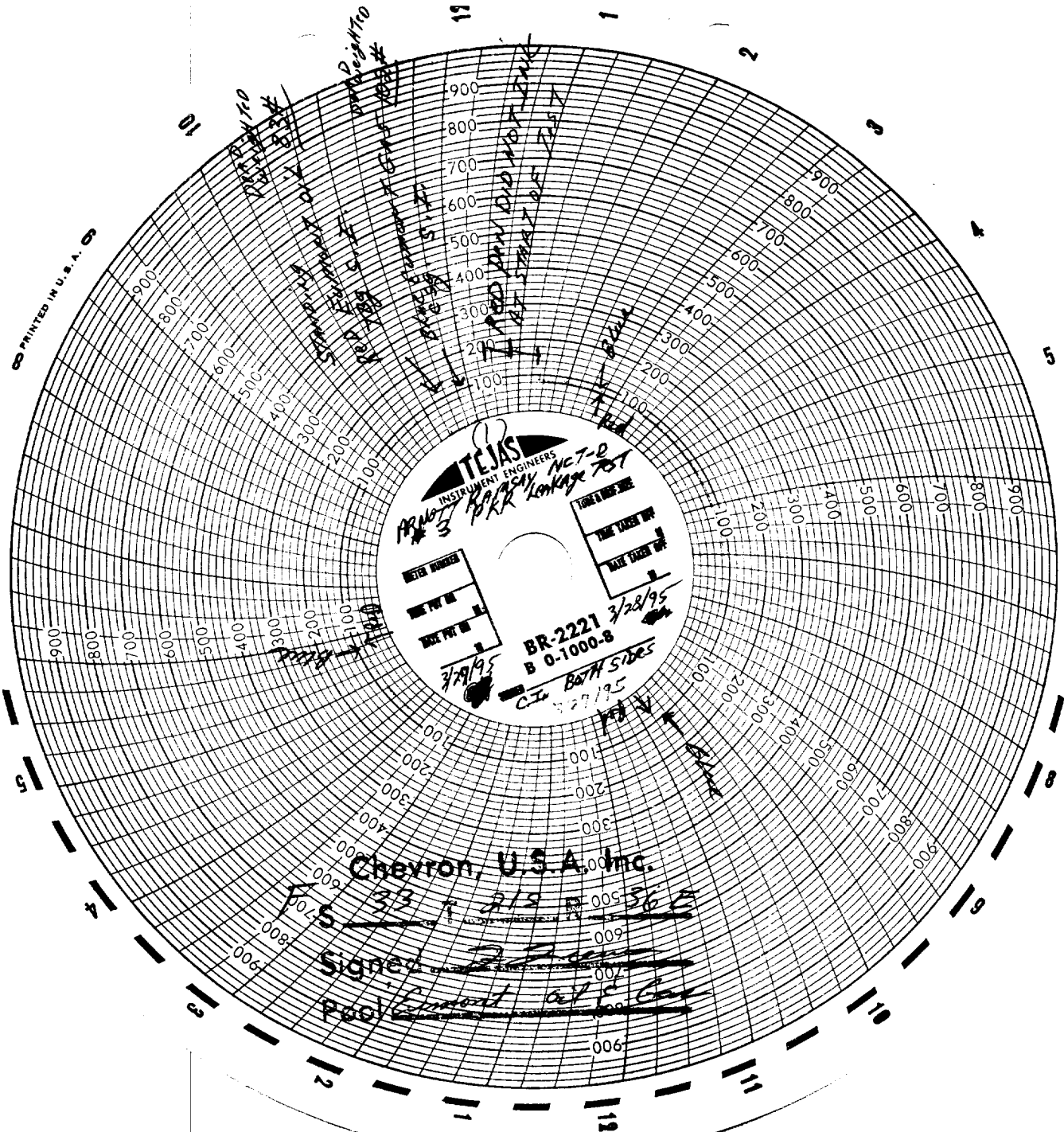
By ORIGINAL SIGNED BY  
GARY WINK

Title FIELD REP. II

PRINTED IN U.S.A.

DAY ↑

↓ NIGHT



**TEXAS**  
INSTRUMENT ENGINEERS

PROJECT #3  
KARASAY  
KPKK  
3/28/95

BR-2221  
B 0-1000-8

CIR BOTH SIDES  
3/28/95

METER NUMBER  
THE TANK NO.  
DATE TANK NO.

THE TANK NO.  
DATE TANK NO.

Chevron, U.S.A., Inc.

33 + 212 = 545

Signed \_\_\_\_\_

Proc. \_\_\_\_\_

1000  
900  
800  
700  
600  
500  
400  
300  
200  
100

10  
9  
8  
7  
6  
5  
4  
3  
2  
1

900  
800  
700  
600  
500  
400  
300  
200  
100

1  
2  
3  
4  
5  
6  
7  
8  
9  
10

PRINTED IN U.S.A.

10 12

DAY

5

4

3

2

12

11

10

9

8

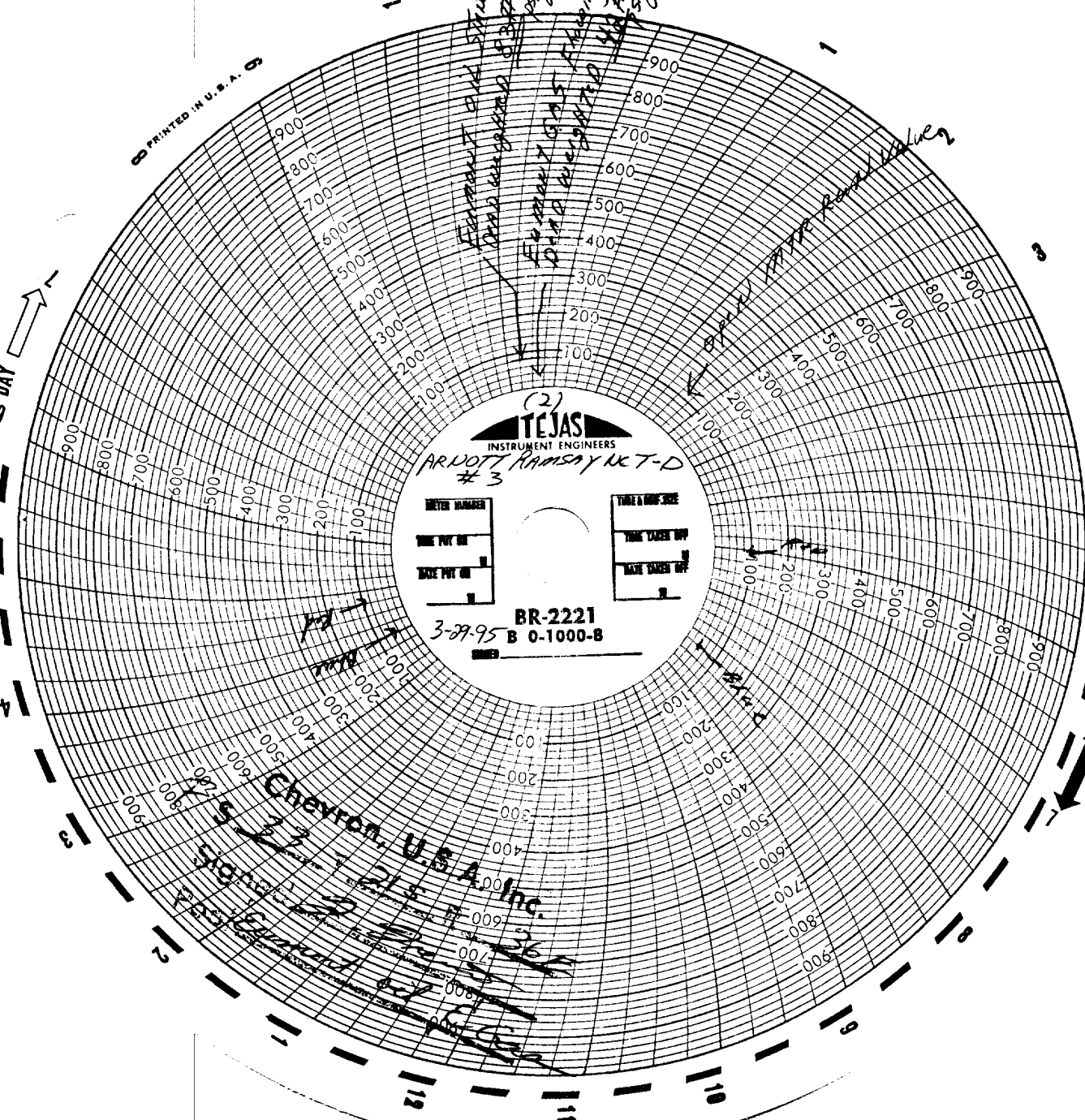
NIGHT

5

4

3

1



(2)  
**TEJAS**  
 INSTRUMENT ENGINEERS  
 ARVOTT HANSEN MCT-D  
 #3

METER NUMBER  
 TIME TAKEN UP  
 METER TAKEN OFF

TIME TAKEN UP  
 METER TAKEN OFF

BR-2221  
 3-29-95 B 0-1000-8

**Chevron U.S.A. Inc.**  
 6000 West Loop South  
 Houston, Texas 77056  
 713-646-3000

FERMENTER P&ID STRAINING  
 DATA AUGUST 1995  
 FERMENTER GAS STRAINING  
 DATA AUGUST 1995

STRAINING P&ID STRAINING  
 DATA AUGUST 1995