

SOUTHEAST NEW MEXICO PACKER LEAKAGE TEST

Operator Gulf Oil Corporation			Lease Arnott-Ramsay (NCT-D)			Well No. 6		
Location of Well	Unit	Sec	Twp	Rge	County			
	K	33	21-S	36-E	Lea			
	Name of Reservoir or Pool		Type of Prod (Oil or Gas)	Method of Prod Flow, Art Lift	Prod. Medium (Tbg or Csg)	Choke Size		
Upper Compl	Jalnet		Oil	Flow	Tubing	40/64"		
Lower Compl	Bunica, South		Oil	Pumps	Tubing	2" WO		

FLOW TEST NO. 1

Both zones shut-in at (hour, date):	9:30 AM 9-9-68		
Well opened at (hour, date):	9:30 AM 9-10-68	Upper Completion	Lower Completion
Indicate by (X) the zone producing.....		X	
Pressure at beginning of test.....		471	171
Stabilized? (Yes or No).....		Yes	Yes
Maximum pressure during test.....		471	186
Minimum pressure during test.....		26	171
Pressure at conclusion of test.....		26	186
Pressure change during test (Maximum minus Minimum).....		445	15
Was pressure change an increase or a decrease?.....		Decrease	Increase
Well closed at (hour, date):	9:30 AM 9-11-68	Total Time On Production	24 hours
Oil Production		Gas Production	
During Test: 4 bbls; Grav. 34.5		During Test 315.0	MCF; GOR 78,750
Remarks			

FLOW TEST NO. 2

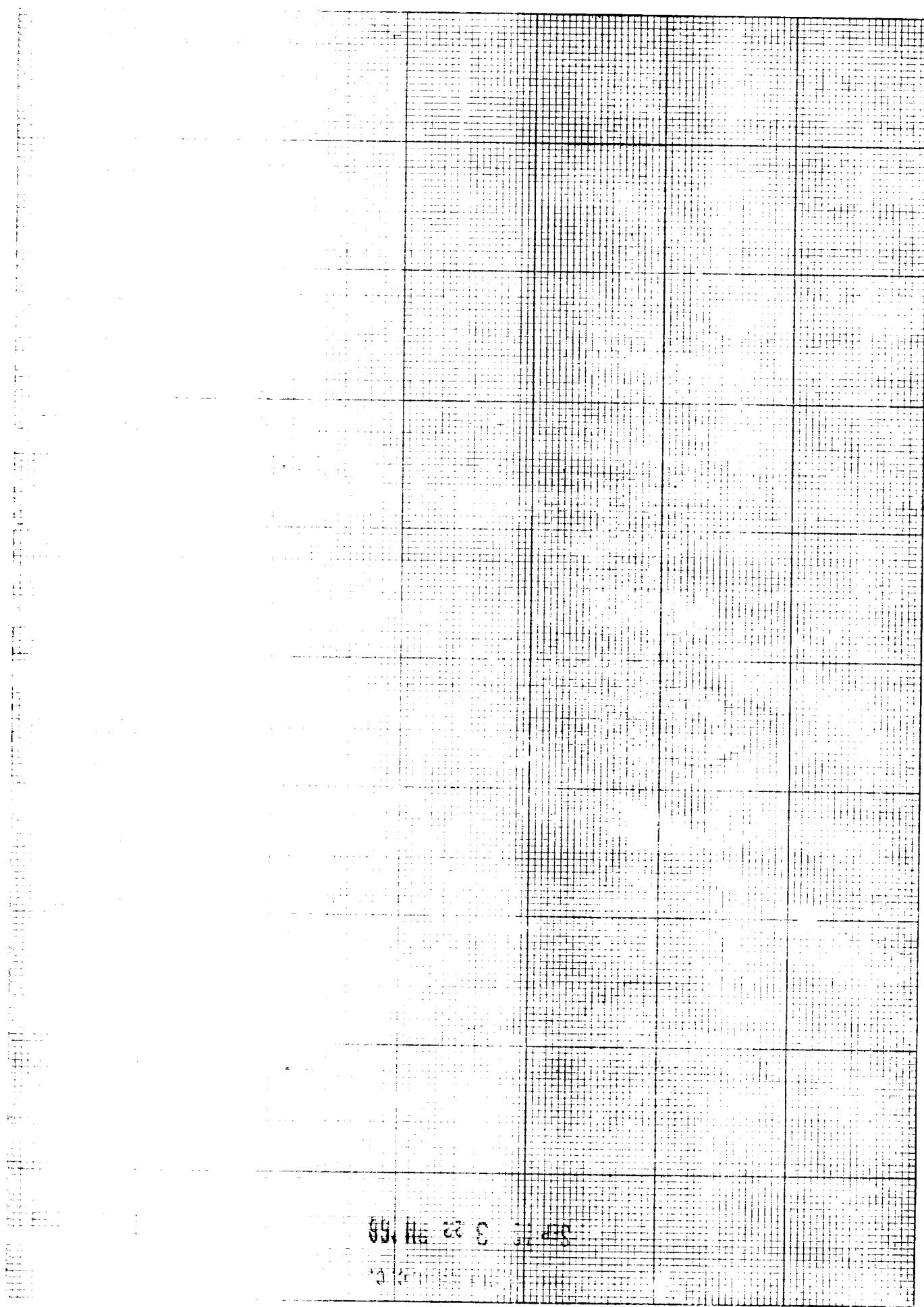
Well opened at (hour, date):	9:30 AM 9-12-68	Upper Completion	Lower Completion
Indicate by (X) the zone producing.....			X
Pressure at beginning of test.....		474	193
Stabilized? (Yes or No).....		Yes	Yes
Maximum pressure during test.....		488	193
Minimum pressure during test.....		474	26
Pressure at conclusion of test.....		488	26
Pressure change during test (Maximum minus Minimum).....		14	167
Was pressure change an increase or a decrease?.....		Increase	Decrease
Well closed at (hour, date):	9:30 AM 9-13-68	Total time on Production	24 hours
Oil Production		Gas Production	
During Test: 3 bbls; Grav. 35.3		During Test 229.0	MCF; GOR 76,333
Remarks			

I hereby certify that the information herein contained is true and complete to the best of my knowledge.

Approved	19	Operator	Gulf Oil Corporation
New Mexico Oil Conservation Commission		By	J. W. Davis
By		Title	Well Tester
Title	SUPERVISOR DISTRICT 1	Date	September 16, 1968

1. A packer shall be installed in the well at the time of completion. The packer shall be installed in the well at the time of completion. Such test shall be conducted within seven days following completion of the well. The test shall be conducted at the time of completion of the well. The test shall be conducted at the time of completion of the well.
2. At the time of completion of the well, the operator shall conduct a packer leakage test. The test shall be conducted at the time of completion of the well. The test shall be conducted at the time of completion of the well.
3. The packer shall be installed in the well at the time of completion. The packer shall be installed in the well at the time of completion. The packer shall be installed in the well at the time of completion.
4. For Flow Test No. 1, the well shall be shut-in at the normal operating pressure. The well shall be shut-in at the normal operating pressure. The well shall be shut-in at the normal operating pressure.

5. Following completion of Flow Test No. 1, the well shall again be shut-in in accordance with Paragraph 3 above.
6. Flow Test No. 2 shall be conducted even though no leak was indicated during Flow Test No. 1. Procedure for Flow Test No. 2 is to be the same as for Flow Test No. 1 except that the previously produced zone shall remain shut-in while the previously shut-in zone is produced.
7. All pressures, throughout the entire test, shall be continuously measured and recorded with recording pressure gauges, the accuracy of which must be checked with a deadweight tester at least twice, once at the beginning and once at the end, of each flow test.
8. The results of the above-described tests shall be filed in triplicate within 15 days after completion of the test. Tests shall be filed with the appropriate District Office of the New Mexico Oil Conservation Commission on Southeast New Mexico Packer Leakage Test Form Revised 11-1-58, together with the original pressure recording gauge charts with all the deadweight pressures which were taken indicated thereon. In lieu of filing the aforesaid charts, the operator may construct a pressure versus time curve for each zone of each test, indicating thereon all pressure changes which may be reflected by the gauge charts as well as all deadweight pressure readings which were taken. If the pressure curve is submitted, the original chart must be permanently filed in the operator's office. Form C-116 shall also accompany the Packer Leakage Test Form when the test period coincides with a gas-oil ratio test period.



89, HE 22 C 11, 498