

NEW MEXICO OIL CONSERVATION COMMISSION  
SOUTHEAST NEW MEXICO PACKER LEAKAGE TEST

Operator <b>Gulf Oil Corporation</b>			Lease <b>Arnett-Ramsay (NCT-D)</b>			Well No. <b>8</b>	
Location of Well	Unit <b>N</b>	Sec <b>33</b>	Twp <b>21-S</b>	Rge <b>36-E</b>	County <b>Lea</b>		
Name of Reservoir or Pool		Type of Prod (Oil or Gas)	Method of Prod Flow, Art Lift	Prod. Medium (Tbg or Csg)	Choke Size		
Upper Compl	<b>Jalnat</b>		<b>Oil</b>	<b>Flow</b>	<b>Tubing</b>	<b>40/64"</b>	
Lower Compl	<b>South Eunice</b>		<b>Oil</b>	<b>* Standing</b>	<b>Tubing</b>	<b>--</b>	

FLOW TEST NO. 1

Both zones shut-in at (hour, date): 9:30 AM 9-16-68

Well opened at (hour, date): 9:30 AM 9-17-68

	Upper Completion	Lower Completion
Indicate by ( X ) the zone producing.....	<b>X</b>	
Pressure at beginning of test.....	<b>348</b>	<b>221</b>
Stabilized? (Yes or No).....	<b>Yes</b>	<b>Yes</b>
Maximum pressure during test.....	<b>348</b>	<b>224</b>
Minimum pressure during test.....	<b>66</b>	<b>221</b>
Pressure at conclusion of test.....	<b>66</b>	<b>224</b>
Pressure change during test (Maximum minus Minimum).....	<b>282</b>	<b>3</b>
Was pressure change an increase or a decrease?.....	<b>Decrease</b>	<b>Increase</b>
Well closed at (hour, date): <u>9:30 AM 9-18-68</u>	Total Time On Production <b>24 hours</b>	
Oil Production	Gas Production	
During Test: <u>7</u> bbls; Grav. <u>34.6</u>	During Test <u>776.0</u> MCF; GOR <u>110,857</u>	
Remarks <u>* South Eunice Oil zone is standing T/A.</u>		

FLOW TEST NO. 2

	Upper Completion	Lower Completion
Well opened at (hour, date):		
Indicate by ( X ) the zone producing.....		
Pressure at beginning of test.....	<b>359</b>	<b>226</b>
Stabilized? (Yes or No).....		
Maximum pressure during test.....		
Minimum pressure during test.....		
Pressure at conclusion of test.....		
Pressure change during test (Maximum minus Minimum).....		
Was pressure change an increase or a decrease?.....		
Well closed at (hour, date)	Total time on Production	
Oil Production	Gas Production	
During Test: _____ bbls; Grav. _____	During Test _____ MCF; GOR _____	
Remarks _____		

I hereby certify that the information herein contained is true and complete to the best of my knowledge.

Approved SEP 24 1968 19  
New Mexico Oil Conservation Commission

Operator Gulf Oil Corporation  
Original Signed By: J. W. Davis  
By \_\_\_\_\_

By [Signature]  
Title \_\_\_\_\_

Title Well Tester  
Date September 20, 1968

1. A packer shall be installed in the well within 30 days following the completion of the well. Such tests shall be made at intervals of 30 days following the completion of the well, and when ever necessary, and when the packer is found to be in the well, the packer shall be removed and the well shall be recommissioned.

2. At the time the operation of the test is made, the packer shall be completed and shut-in, and the minimum of the test shall be maintained.

3. The packer shall be completed and shut-in, and the minimum of the test shall be maintained.

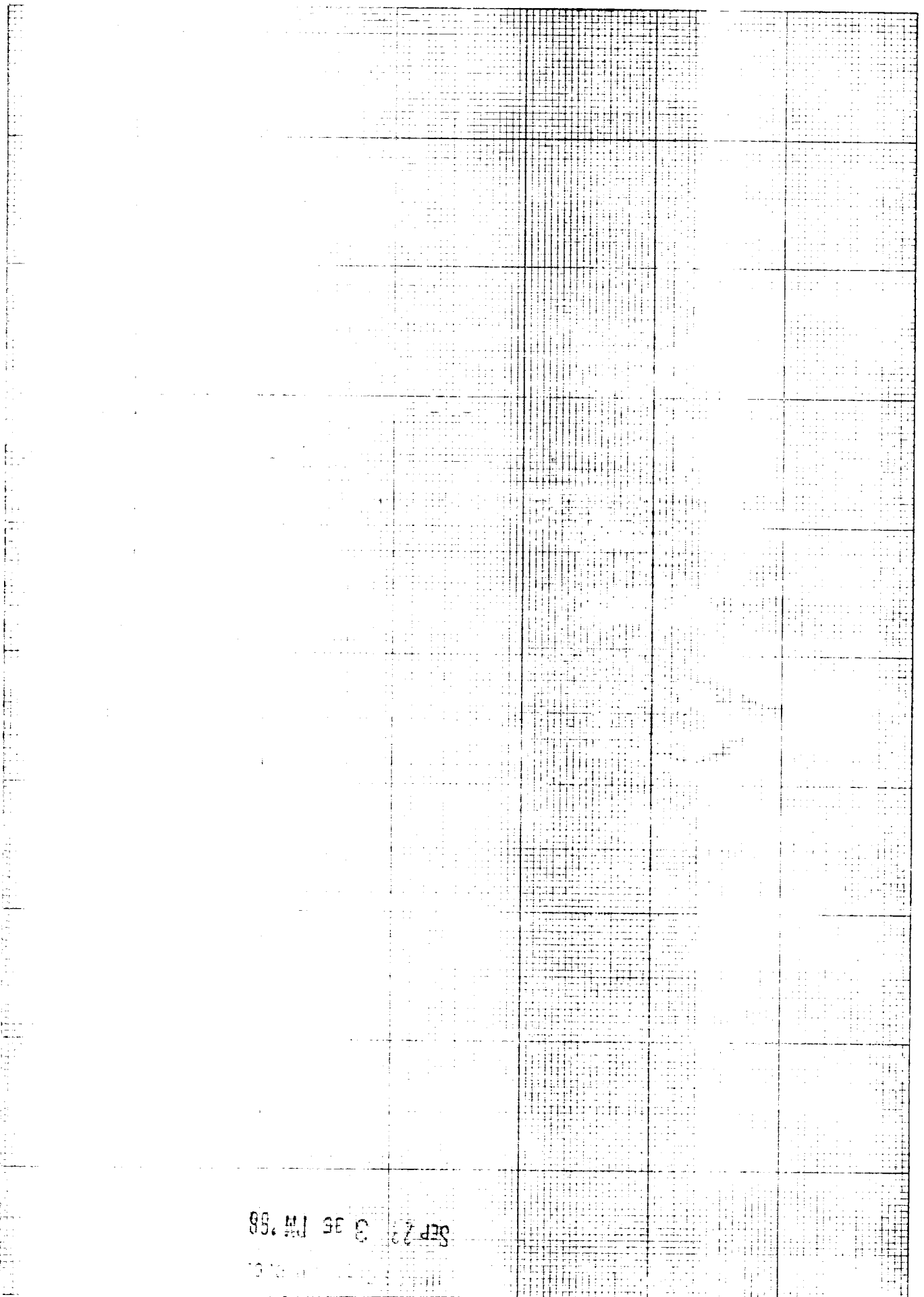
4. For Flow Test No. 1, the test shall be stabilized, and that the flow

5. Following completion of Flow Test No. 1, the well shall again be shut-in, and the well shall be recommissioned.

6. Flow Test No. 2 shall be conducted, and when no leak was indicated during Flow Test No. 1, the procedure for Flow Test No. 2 is to be the same as for Flow Test No. 1 except that the previously produced zone shall remain shut-in while the previously shut-in zone is produced.

7. All pressures, throughout the entire test, shall be continuously measured and recorded with recording pressure gauges, the accuracy of which must be checked with a deadweight tester at least twice, once at the beginning and once at the end, of each flow test.

8. The results of the above-described tests shall be filed in triplicate within 15 days after completion of the test. Tests shall be filed with the appropriate District Office of the New Mexico Oil Conservation Commission on Southeast New Mexico Packer Leakage Test Form Revised 11-1-58 together with the original pressure recording gauge charts with all the deadweight pressures which were taken indicated thereon. In lieu of filing the aforesaid charts, the operator may construct a pressure versus time curve for each zone of each test, indicating thereon all pressure changes which may be reflected by the gauge charts as well as all deadweight pressure readings which were taken. If the pressure curve is submitted, the original chart must be properly filed in the operator's office. Form C-118 shall also accompany the Packer Leakage Test Form when the test period coincides with gas-oil ratio test period.



SEP 2 3 35 PM '58