

Submit to Appropriate

District Office

State Lease-6 copies

Fee Lease-5 copies

State of New Mexico
Energy, Minerals and Natural Resources Department

Form C-101

Revised 1-1-89

OIL CONSERVATION DIVISION

P.O. Box 2088

Santa Fe, New Mexico 87504-2088

DISTRICT I

P.O. Box 1980, Hobbs, NM 88240

DISTRICT II

P.O. Drawer Dd, Artesia, NM 88210

DISTRICT III

1000 Rio Brazos Rd., Aztec, Nm 87410

API NO. (assigned by OCD on New Wells)

30-025-04902

5. Indicate Type of Lease

STATE



FEE



6. State Oil & Gas Lease No.

N/A

APPLICATION FOR PERMIT TO DRILL, DEEPEN, OF PLUG BACK

1a. Type of Work:

DRILL ☐

RE-ENTER ☐

DEEPEN ☐

PLUG BACK ☒

b. Type of Well:

OIL

GAS

OTHER

SINGLE

MULTIPLE

WELL ☐

WELL ☒

ZONE ☐

ZONE ☐

2. Name of Operator

CHEVRON U.S.A. INC.

3. Address of Operator

P.O. BOX 1150, MIDLAND, TX 79702 ATTN: P.R. MATTHEW

8. Well No.

38

9. Pool name or Wildcat

SOUTH EUNICE - SRQW

4. Well Location

Unit Letter

L

1980

Feet From The

SOUTH

Line an

660

Feet From The

WEST

Line

Section

34

Township

21S

Range

36E

NMPM

LEA

County

10. Proposed depth

11. Formation

QUEEN

12. Rotary or C.T.

ROTARY

13. Elevation (Show DF,RT, GR, etc.)

3573

14. Kind & Status Plug Bond

'-----'

15. Drig Contractor

UNKNOWN

16. Date Work will start

ASAP

17 PROPOSED CASING AND CEMENT PROGRAM

SIZE OF HOLE

SIZE OF CASING

WEIGHT PER FOOT

SETTING DEPTH

SACKS OF CEMENT

EST. TOP

NO NEW STRINGS WILL BE SET.

IT IS PROPOSED TO:

SQUEEZE OFF PERFS AT 3771'-3737'. ABANDON EUMONT.

PERF SOUTH EUNICE POOL, QUEEN PAY AT 3568-3737.

ACIDIZE PERFS WITH 6000 GALS OF 20% NEFE.. FRAC PERFS WITH GEL AND SAND.

FLOW WELL BACK, CLEAN OUT SAND AND LOG WELL.

TIH WITH PACKER AND SET AT +- 3200'.

RETURN TO PRODUCTION.

IN ABOVE SPACE DESCRIBE PROPOSE IF PROPOSAL IS TO DEEPEN OR PLUG BACK, GIVE DATA ON PRESENT PRODUTIVE ZONE AND PROPOSED NEW PRODUCTIVE ZONE. GIVE BLOWOUT PREVENTER PROGRAM, IF ANY.

I hereby certify that the information above is true and complete to the best of my knowledge and belief.

SIGNATURE

P.R. Matthews

TITLE

TECHNICAL ASSISTANT

DATE

4-2-92

TYPE OR PRINT NAME

P.R. MATTHEWS

TELEPHONE NO.

(915)687-7812

APPROVED BY

P.R. Matthews

TITLE

DATE

CONDITIONS OF APPROVAL, IF ANY:

APR 6 '92

Submit to Appropriate
District Office
State Lease - 4 copies
Fee Lease - 3 copies

State of New Mexico
Energy, Minerals and Natural Resources Department

Form C-102
Revised 1-1-89

OIL CONSERVATION DIVISION

P.O. Box 2088
Santa Fe, New Mexico 87504-2088

DISTRICT I
P.O. Box 1980, Hobbs, NM 88240

DISTRICT II
P.O. Drawer DD, Artesia, NM 88210

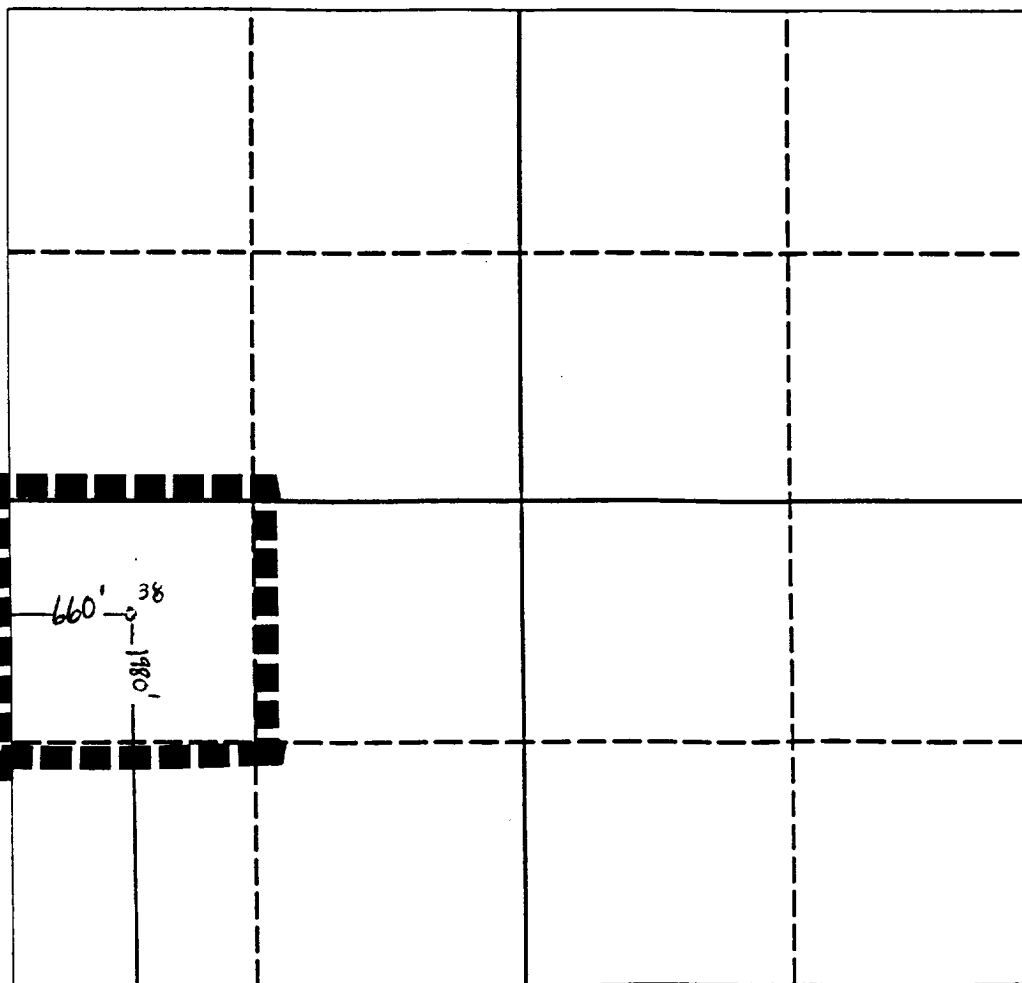
DISTRICT III
1000 Rio Brazos Rd., Aztec, NM 87410

WELL LOCATION AND ACREAGE DEDICATION PLAT

All Distances must be from the outer boundaries of the section

Operator CHEVRON U.S.A. INC.			Lease W.A. RAMSAY		Well No. 38
Unit Letter L	Section 34	Township 21S	Range 36E	County NMPM	LEA
Actual Footage Location of Well: 1980 feet from the SOUTH line and 660 feet from the WEST line					
Ground level Elev. 3573	Producing Formation QUEEN		Pool SOUTH EUNICE - SPQN		Dedicated Acreage: 40 Acres

- Outline the acreage dedicated to the subject well by colored pencil or hachure marks on the plat below.
- If more than one lease is dedicated to the well, outline each and identify the ownership thereof (both as to working interest and royalty).
- If more than one lease of different ownership is dedicated to the well, have the interest of all owners been consolidated by communitization, unitization, force-pooling, etc?
☐ Yes ☐ No If answer is "yes" type of consolidation _____
If answer is "no" list the owners and tract descriptions which have actually been consolidated. (Use reverse side of this form if necessary). _____
No allowable will be assigned to the well until all interests have been consolidated (by communitization, unitization, forced-pooling, or otherwise) or until a non-standard unit, eliminating such interest, has been approved by the Division.



OPERATOR CERTIFICATION

I hereby certify that the information contained herein is true and complete to the best of my knowledge and belief.

Signature

P.R. Matthews

Printed Name

P.R. MATTHEWS

Position

TECHNICAL ASSISTANT

Company

CHEVRON U.S.A. INC.

Date

4-2-92

SURVEYOR CERTIFICATION

I hereby certify that the well location shown on this plat was plotted from field notes of actual surveys made by me or under my supervision, and that the same is true and correct to the best of my knowledge and belief.

Date Surveyed

Signature & Seal of
Professional Surveyor

Certificate No.

0 330 660 990 1320 1650 1980 2310 2640 2000 1500 1000 500 0