

## DISTRICT I

1625 N. French Dr., Hobbs, NM 88240

## DISTRICT II

811 South First, Artesia, NM 88210

## DISTRICT III

1000 Rio Brazos Rd., Aztec, NM 87410

## DISTRICT IV

1220 South St. Francis Dr., Santa Fe, NM 87505

State of New Mexico  
Geology, Minerals and Natural ResourcesForm C-105  
Revised March 25, 1999OIL CONSERVATION DIVISION  
1220 South St. Francis Drive  
Santa Fe, NM 87505

WELL API NO.

30-025-06355

5. Indicate Type of Lease

☒ STATE ☐ FEE

6. State Oil &amp; Gas Lease No.

## WELL COMPLETION OR RECOMPLETION REPORT AND LOG

1a. Type of Well:

☐ OIL WELL ☐ GAS WELL ☐ DRY ☒ OTHER Injection

b. Type of Completion:

☐ New Well ☐ Workover ☐ Deepen ☐ Plug Back ☐ Diff. Resrv. ☒ Other

7. Lease Name or Unit Agreement Name

Northeast Drinkard Unit

2. Name of Operator

Apache Corporation

8. Well No.

223

3. Address of Operator

2000 Post Oak Blvd., Ste. 100, Houston, Texas 77056-4400 / 713-296-6000 WFX-774

9. Pool name or Wildcat

Eunice N., Blinebry-Tubb-Drinkard

4. Well Location

Unit Letter P : 2970 Feet From The South Line and 990 Feet From The East Line  
Section 2 Township 21S Range 37E NMPM Lea County

10. Date Spudded

11. Date T.D. Reached

12. Date Compl. (Ready to Prod.)

11/30/01

13. Elevations (DF &amp; RKB, RT, GR, etc.)

3500'

14. Elev. Casinghead

GR

15. Total Depth

7542

16. Plug Back T.D.

6245

17. If Multiple Compl. How

Many Zones?

18. Intervals

Drilled By

Rotary Tools

Cable Tools

19. Producing Interval(s), of this completion - Top, Bottom, Name

Blinebry 5787 - 6243

20. Was Directional Survey Made

21. Type Electric and Other Logs Run

22. Was Well Cored

23.

## CASING RECORD (Report all strings set in well)

CASING SIZE	WEIGHT LB./FT.	DEPTH SET	HOLE SIZE	CEMENTING RECORD	AMOUNT PULLED
13-3/8	48#	336	17-1/2	450 sx / Circulated to Surface	
9-5/8	36#	3044	12-1/4	1550 sx / TOC @ 309' (TS)	
7	20#	5834	8-3/4	600 sx / TOC @ 2670' (TS)	

24. LINER RECORD

SIZE	TOP	BOTTOM	SACKS CEMENT	SCREEN
4-1/2	5131	7541	325	

25. TUBING RECORD

SIZE	DEPTH SET	PACKER SET
2-3/8		5731

26. Perforation record (interval, size, and number)

Blinebry 5787 - 6243 - 60 Holes

5834 - 5950 (Abandoned)

Tubb 6252 - 6679 (Abandoned)

Drinkard 6756 - 6938 (Abandoned)

Abo 7134 - 7411 (Abandoned)

27. ACID, SHOT, FRACTURE, CEMENT, SQUEEZE, ETC.

DEPTH INTERVAL AMOUNT AND KIND MATERIAL USED

5834 - 5950

Squeezed behind liner w/ 325 sx

CIBP @ 6400' w/ 155' sand &amp; cement

CIBP @ 6720' w/ 35' cement

CIBP @ 7110' w/ 35' cement

28.

## PRODUCTION

Date First Production

11/30/01

Production Method (Flowing, gas lift, pumping - Size and type pump)

Well Status (Prod. or Shut-in)

Injecting

Date of Test

Hours Tested

Choke Size

Prod'n For

Oil - Bbl.

Gas - MCF

Water - Bbl.

Gas - Oil Ratio

Flow Tubing Press.

Casing Pressure

Calculated 24-

Hour Rate

Oil - Bbl.

Gas - MCF

Water - Bbl.

Oil Gravity - API - (Corr.)

29. Disposition of Gas (Sold, used for fuel, vented, etc.)

Test Witnessed By

30. List Attachments

C-103 Sundry Notice w/ Chart

31. I hereby certify that the information shown on both sides of this form is true and complete to the best of my knowledge and belief

Signature

Printed  
Name

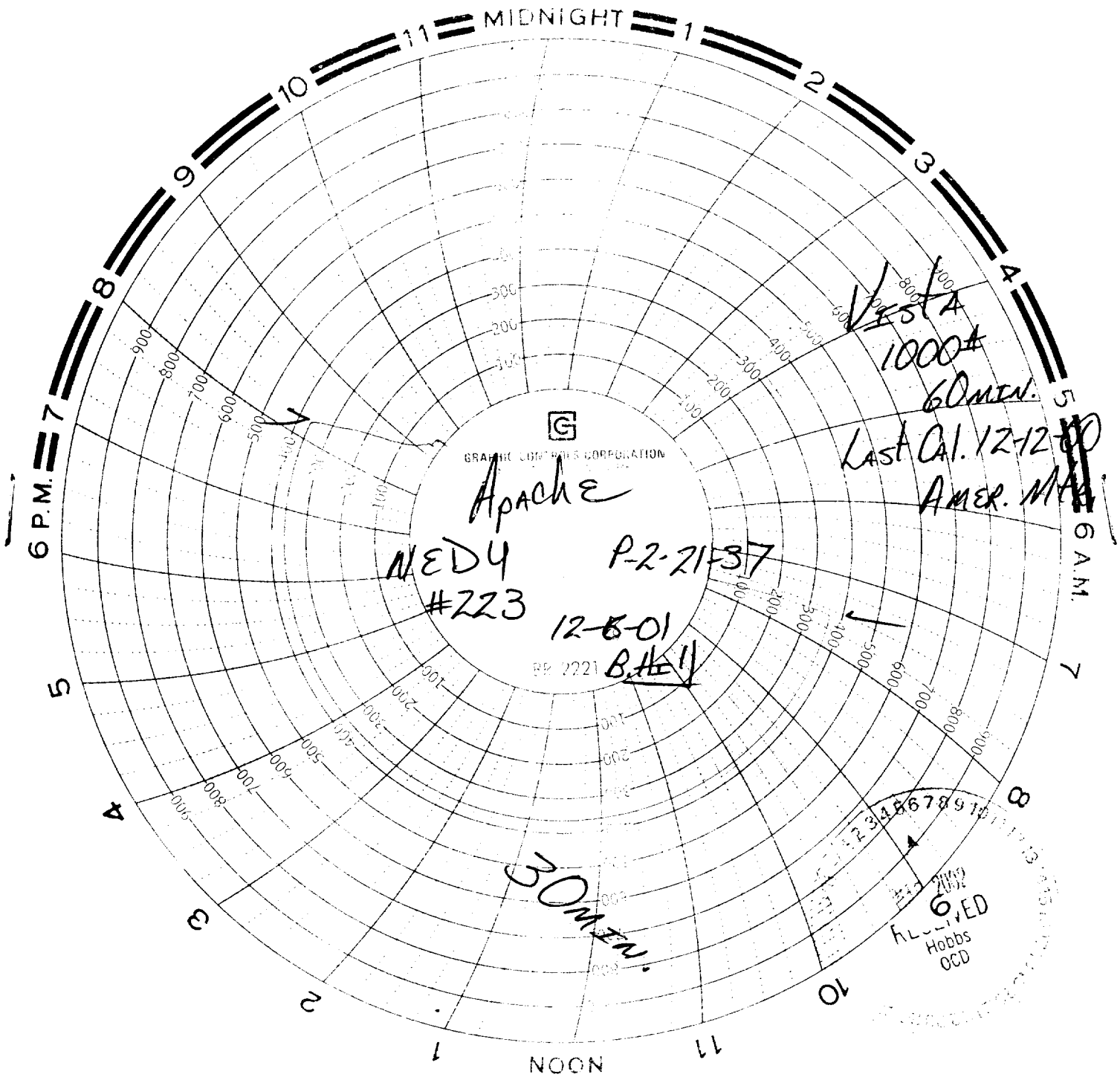
Debra J. Anderson

Title

Sr. Engineering Technician

Date 02/28/02





GRAPHIC CONTROLS CORPORATION



Apache

MED 4  
#223

P-2-21-37

12-8-01

PP 2221

B.H. 11

30 MIN.

VESTA  
1000#  
60 MIN.

Last Cal. 12-12-80  
AMER. MAR.

FLYING  
Hobbs  
OGD