

NO. OF COPIES RECEIVED		
DISTRIBUTION		
SANTA FE		
FILE		
U.S.G.S.		
LAND OFFICE		
OPERATOR		

# NEW MEXICO OIL CONSERVATION COMMISSION

Form C-101  
Revised 1-1-65

5A. Indicate Type of Lease	
STATE <input checked="" type="checkbox"/>	FEE <input type="checkbox"/>

5. State Oil & Gas Lease No.

## APPLICATION FOR PERMIT TO DRILL, DEEPEN, OR PLUG BACK

1a. Type of Work		7. Unit Agreement Name	
b. Type of Well DRILL <input type="checkbox"/> DEEPEN <input type="checkbox"/> PLUG BACK <input checked="" type="checkbox"/> OIL WELL <input checked="" type="checkbox"/> GAS WELL <input type="checkbox"/> OTHER <input type="checkbox"/> SINGLE ZONE <input checked="" type="checkbox"/> MULTIPLE ZONE <input type="checkbox"/>		8. Farm or Lease Name <b>State Section 2</b>	
2. Name of Operator <b>Shell Oil Company</b>		9. Well No. <b>13</b>	
3. Address of Operator <b>P. O. Box 1810, Midland, Texas 79701</b>		10. Field and Pool, or Wildcat <b>Wildcat</b>	
4. Location of Well UNIT LETTER <b>N</b> Lot <b>14</b> LOCATED <b>2970</b> FEET FROM THE <b>South</b> LINE AND <b>1650</b> FEET FROM THE <b>West</b> LINE OF SEC. <b>2</b> TWP. <b>21-S</b> RGE. <b>37-E</b> NMPM		12. County <b>Lea</b>	
19. Proposed Depth <b>PB 6550</b>		19A. Formation <b>San Andres</b>	
20. Rotary or C.T. <b>Blanket</b>		21. Elevations (Show whether DF, RT, etc.) <b>3494 DF</b>	
21A. Kind & Status Plug. Bond <b>Blanket</b>		21B. Drilling Contractor <b>Workover Rig</b>	
22. Approx. Date Work will start <b>Immediately</b>			

23.

## PROPOSED CASING AND CEMENT PROGRAM Record

SIZE OF HOLE	SIZE OF CASING	WEIGHT PER FOOT	SETTING DEPTH	SACKS OF CEMENT	EST. TOP
17 1/2"	13 3/8"	48#	193'	250	Surface
11"	8 5/8"	28.5#, 32#	3148'	1900	Surface
7 7/8"	5 1/2"	15.5#, 17#	8032'	500	5900'

- 1 - Run CIBP and set at approximately 6580' and spot 20' cement on CIBP. /& 3979
- 2 - Perforate 5 1/2" casing at 3972, 3973, 3975, 3977, 3980, 3982, 3987 and 3989 (9 shots).
- 3 - Acidize with 3000 gal 15% NEFE in 10 - 300 gal stages with one ball sealer between first 4 stages and 2 between last stages.
- 4 - Run Temperature Log.

IN ABOVE SPACE DESCRIBE PROPOSED PROGRAM: IF PROPOSAL IS TO DEEPEN OR PLUG BACK, GIVE DATA ON PRESENT PRODUCTIVE ZONE AND PROPOSED NEW PRODUCTIVE ZONE. GIVE BLOWOUT PREVENTER PROGRAM, IF ANY.

I hereby certify that the information above is true and complete to the best of my knowledge and belief.

Signed S. G. Scott Title Senior Operations Engineer Date 5-28-71

(This space for State Use)

APPROVED BY [Signature] TITLE SUPERVISOR DISTRICT 1 DATE JUN 4 1971

CONDITIONS OF APPROVAL, IF ANY:

**RECEIVED**

JUN 4 1971

OIL CONSERVATION COMM.  
HOBBS, N. M.

**RECEIVED**

JUN 1 1971

OIL CONSERVATION COMM.  
HOBBS, N. M.

**NEW MEXICO OIL CONSERVATION COMMISSION  
WELL LOCATION AND ACREAGE DEDICATION PLAT**

Form C-102  
Supersedes C-128  
Effective 1-1-65

All distances must be from the outer boundaries of the Section.

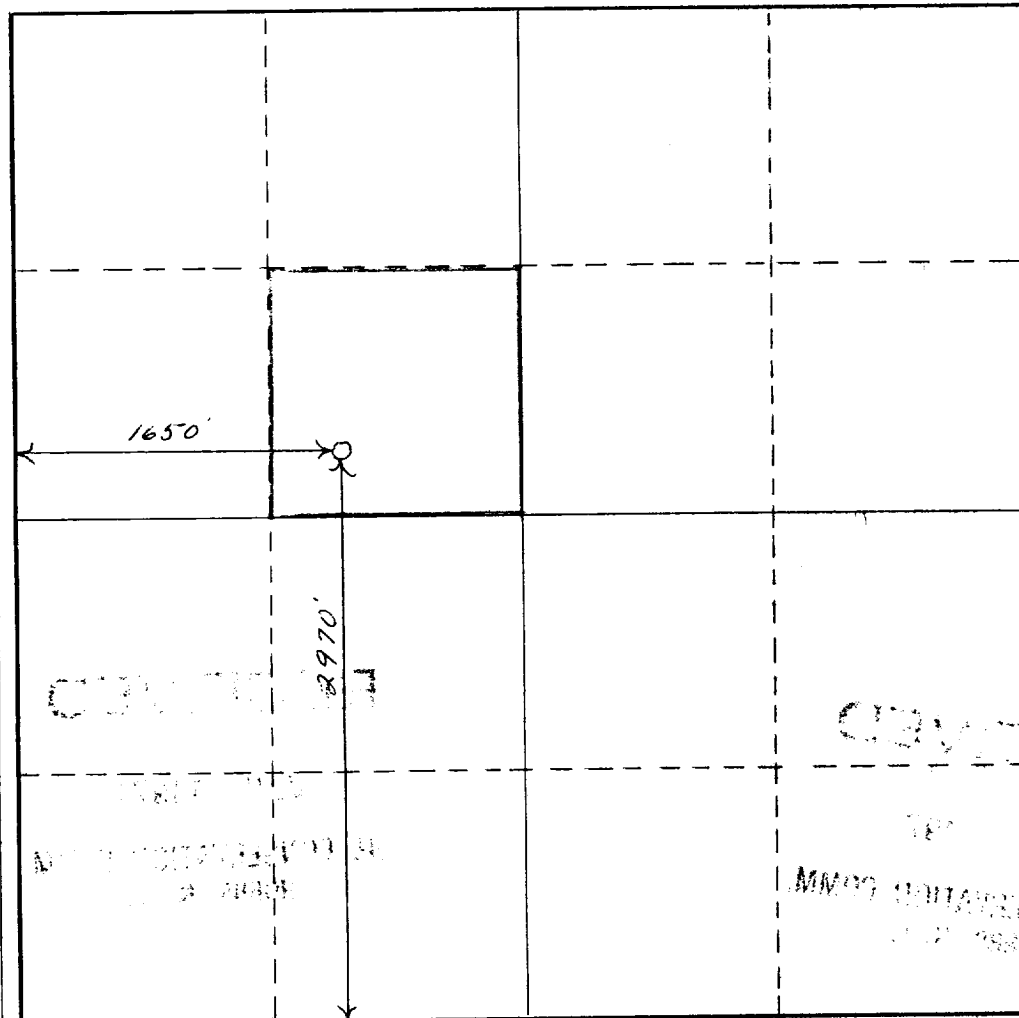
Operator <b>Shell Oil Company</b>			Lease <b>State Section 2</b>		Well No. <b>13</b>
Unit Letter <b>N Lot 14</b>	Section <b>2</b>	Township <b>21-S</b>	Range <b>37-E</b>	County <b>Lea</b>	
Actual Footage Location of Well: <div style="display: flex; justify-content: space-between;"> <span><b>2970</b> feet from the <b>South</b> line and</span> <span><b>1650</b> feet from the <b>West</b> line</span> </div>					
Ground Level Elev. <b>3494 DF</b>	Producing Formation <b>San Andres</b>	Pool <b>Wildcat</b>	Dedicated Acreage: <b>40</b> Acres		

1. Outline the acreage dedicated to the subject well by colored pencil or hachure marks on the plat below.
2. If more than one lease is dedicated to the well, outline each and identify the ownership thereof (both as to working interest and royalty).
3. If more than one lease of different ownership is dedicated to the well, have the interests of all owners been consolidated by communitization, unitization, force-pooling, etc?

☐ Yes    ☐ No    If answer is "yes," type of consolidation \_\_\_\_\_

If answer is "no," list the owners and tract descriptions which have actually been consolidated. (Use reverse side of this form if necessary.) \_\_\_\_\_

No allowable will be assigned to the well until all interests have been consolidated (by communitization, unitization, forced-pooling, or otherwise) or until a non-standard unit, eliminating such interests, has been approved by the Commission.



**CERTIFICATION**

I hereby certify that the information contained herein is true and complete to the best of my knowledge and belief.

*S. G. Scott*

Name

**S. G. Scott**

Position

**Senior Operations Engineer**

Company

**Shell Oil Company**

Date

**5-28-71**

I hereby certify that the well location shown on this plat was plotted from field notes of actual surveys made by me or under my supervision, and that the same is true and correct to the best of my knowledge and belief.

Date Surveyed

Registered Professional Engineer  
and/or Land Surveyor

Certificate No.

0 330 660 990 1320 1650 1980 2310 2640 2000 1500 1000 500 0

**RECEIVED**

**JUN - 4 1971**

**OIL CONSERVATION COMM.  
HOBBS, N. M.**

**RECEIVED**

**JUN 11 1971**

**OIL CONSERVATION COMM.  
HOBBS, N. M.**