

NEW MEXICO OIL CONSERVATION COMMISSION  
Santa Fe, New Mexico

NOTICE OF INTENTION TO DRILL OR RECOMPLETE

Notice must be given to the District Office of the Oil Conservation Commission and approval obtained before drilling or recompletion begins. If changes in the proposed plan are considered advisable, a copy of this notice, showing such changes will be returned to the sender. Submit this notice in QUINTUPLICATE. One copy will be returned following approval. See additional instructions in Rules and Regulations of the Commission.

Hobbs, New Mexico  
(Place)

August 17, 1956  
(Date)

OIL CONSERVATION COMMISSION  
SANTA FE, NEW MEXICO

Gentlemen:

You are hereby notified that it is our intention to commence the (Drilling) (Recompletion) of a well to be known as

Shell Oil Company  
(Company or Operator)

Taylor-Glenn  
(Lease)

Well No. 7, in E. The well is

located 1582 feet from the North line and 990 feet from the east line of Section 4, T. 21-N, R. 37-E, NMPM.

(GIVE LOCATION FROM SECTION LINE) Taylor-Glenn Pool, Lea County

R. 37-E

D	C	B	A
E	F	G	X H
L	K	J	I
M	N	O	P

Section 4

If State Land the Oil and Gas Lease is No. ---

If patented land the owner is Taylor-Glenn

Address ---

We propose to drill well with drilling equipment as follows: Rotary tools

The status of plugging bond is Blanket Bond

Drilling Contractor Valma Petroleum Corporation

We intend to complete this well in the Miners formation at an approximate depth of 5950 feet.

CASING PROGRAM

We propose to use the following strings of Casing and to cement them as indicated:

Size of Hole	Size of Casing	Weight per Foot	New or Second Hand	Depth	Sacks Cement
17"	13 7/8"	48.1	New	300'	300
11"	8 5/8"	32.1	New	3150'	1500'
7 7/8"	5 1/2"	15.54	New	5950'	100

If changes in the above plans become advisable we will notify you immediately.

ADDITIONAL INFORMATION (If recompletion give full details of proposed plan of work.)

Approved \_\_\_\_\_, 19 \_\_\_\_\_  
Except as follows:

By \_\_\_\_\_  
Title \_\_\_\_\_

Sincerely yours,

Shell Oil Company  
(Company or Operator)

Original signed by  
B. Nevill B. Nevill

Position Division Exploitation Engineer

Send Communications regarding well to

Shell Oil Company

Box 1957

Hobbs, New Mexico

NEW MEXICO  
OIL CONSERVATION COMMISSION

Form C-128

Well Location and/or Gas Proration Plat

Date August 17, 1956

Operator Shell Oil Company Lease Taylor-Glenn

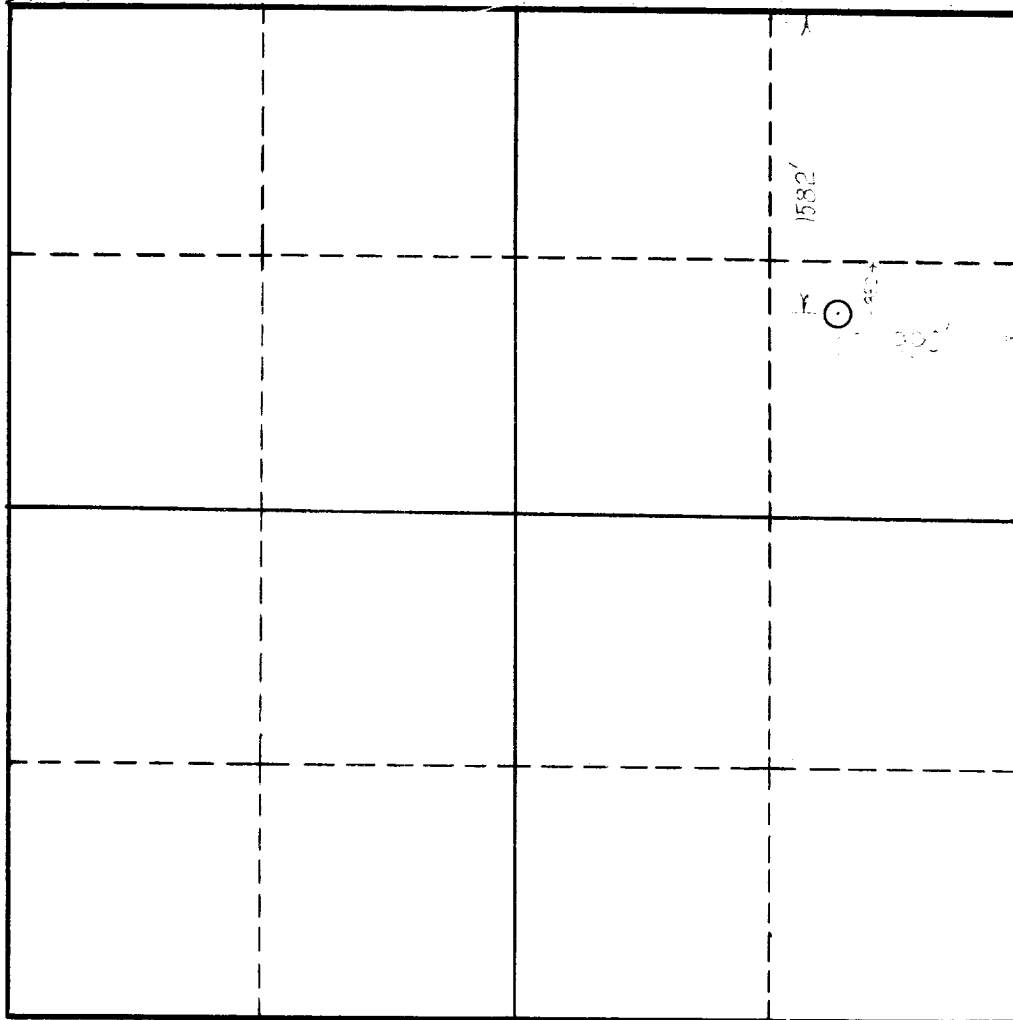
Well No. 7 Section 4 Township 21-S Range 37-E NMPM

Located 1582 Feet From north Line, 990 Feet From east Line,

Lea County, New Mexico. G. L. Elevation Not available

Name of Producing Formation Blincy Pool Taylor-Blincy Dedicated Acreage 240

(Note: All distances must be from outer boundaries of Section)



SCALE: 1"=1000'

1. Is this Well a Dual Comp. ? Yes    No X
2. If the answer to Question 1 is yes, are there any other dually completed wells within the dedicated acreage? Yes    No

This is to certify that the above plat was prepared from field notes of actual surveys made by me or under my supervision and that the same are true and correct to the best of my knowledge and belief.

Name B. Nevill  
Position Division Exploration Engineer  
Representing Shell Oil Company  
Address Box 1957, Hobbs, New Mexico

Date Surveyed 7-26-56  
Neal Shipman Cert. # 1467  
Registered Professional Engineer and/or  
Land Surveyor